

Image may be representation.
See specifications for product details.



XC7VX690T-2FFG1927C

Manufacturer Part Number	XC7VX690T-2FFG1927C
Manufacturer	AMD Xilinx
Allelco Part Number	32D-XC7VX690T-2FFG1927C
ECAD Model	Request Free CAD Models
Parts Description	IC FPGA 600 I/O 1927FCBGA
Package	1924-BBGA, FCBGA
Data sheet	Virtex-7 FPGAs Brief.pdf
RoHs Status	ROHS3 Compliant

Get a Quote

XC7VX690T-2FFG1927C - AMD.New Original in Stock. Download Linear Technology XC7VX690T-2FFG1927C datasheet/specifications on AllelcoElec.com.
Request a quote for XC7VX690T-2FFG1927C, please send us email: info@allelco.com

Specifications

XC7VX690T-2FFG1927C Tech Specifications

XC7VX690T-2FFG1927C - AMD technical specifications, attributes, parameters

Product Attribute	Attribute Value	Product Attribute	Attribute Value
Manufacturer	AMD Xilinx	Operating Temperature	0°C ~ 85°C (TJ)
Voltage - Supply	0.97V ~ 1.03V	Number of Logic Elements/Cells	693120
Total RAM Bits	54190080	Number of LABs/CLBs	54150
Supplier Device Package	1927-FCBGA (45x45)	Number of I/O	600
Series	Virtex®-7 XT	Mounting Type	Surface Mount
Package / Case	1924-BBGA, FCBGA	Base Product Number	XC7VX690
Package	Tray		

Parts with Similar Specifications

The three parts on the right have similar specifications to AMD XC7VX690T-2FFG1927C

Product Attribute				
Part Number	XC7VX690T-2FFG1927C	XC7VX690T-1FFG1927I	XC7VX690T-2FFG1158C	XC7VX690T-3FFG1158E
Manufacturer	AMD	AMD	AMD	AMD
Mounting Type	Surface Mount	Surface Mount	Surface Mount	Surface Mount
Total RAM Bits	54190080	54190080	54190080	54190080
Supplier Device Package	1927-FCBGA (45x45)	1927-FCBGA (45x45)	1158-FCBGA (35x35)	1158-FCBGA (35x35)
Base Product Number	XC7VX690	XC7VX690	XC7VX690	XC7VX690
Package / Case	1924-BBGA, FCBGA	1924-BBGA, FCBGA	1156-BBGA, FCBGA	1156-BBGA, FCBGA
Number of LABs/CLBs	54150	54150	54150	54150
Operating Temperature	0°C ~ 85°C (TJ)	-40°C ~ 100°C (TJ)	0°C ~ 85°C (TJ)	0°C ~ 100°C (TJ)
Number of Logic Elements/Cells	693120	693120	693120	693120
Voltage - Supply	0.97V ~ 1.03V	0.97V ~ 1.03V	0.97V ~ 1.03V	0.97V ~ 1.03V
Package	Tray	Tray	Tray	Tray
Number of I/O	600	600	350	350
Series	Virtex®-7 XT	Virtex®-7 XT	Virtex®-7 XT	Virtex®-7 XT

XC7VX690T-2FFG1927C Datasheet PDF

Download XC7VX690T-2FFG1927C pdf datasheets and AMD documentation for XC7VX690T-2FFG1927C - AMD.

Datasheets

[Virtex-7 FPGAs Brief.pdf](#)

Environmental Information

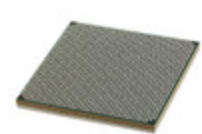
[Xilinx REACH211 Cert.pdf](#)

PCN Design/Specification

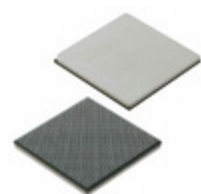
[Cylindrical Battery Holders.pdf](#)

Customers Also Interested in

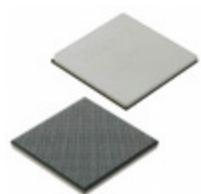
Recommended Products



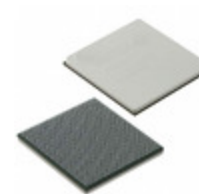
XC7VX690T-1FFG1927I
AMD
IC FPGA 600 I/O 1927FCBGA



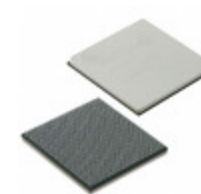
XC7VX690T-2FFG1158C
AMD
IC FPGA 350 I/O 1158FCBGA



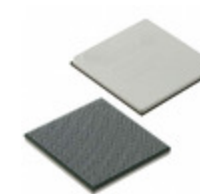
XC7VX690T-3FFG1158E
AMD
IC FPGA 350 I/O 1158FCBGA



XC7VX690T-3FFG1157E
AMD
IC FPGA 600 I/O 1157FCBGA



XC7VX690T-2FFG1157C
AMD
IC FPGA 600 I/O 1157FCBGA



XC7VX690T-2FFG1157I
AMD
IC FPGA 600 I/O 1157FCBGA



Shipment

Delivery Time

In-stock items can be shipped within 24 hours. Some parts will be arranged for delivery within 1-2 days from the date all items arrive at our warehouse. And Allelco ships order once a day at about 17:00, except Sunday. Once the goods are shipped, the estimated delivery time depends on the shipping methods and Delivery destination. The table below shows are the logistic time for some common countries.

Delivery Cost

> Use your express account for shipment if you have one.

> Use our account for the shipment. Refer to the table below for the approximate charges.

(Different time frame / countries / package size has different price.)

Delivery Method

> Global Common Shipment by DHL / UPS / FedEx / TNT / EMS / SF we support.

> Others more shipping ways, please get in touch with your customer manager.

Common Countries Logistic Time Reference		
Region	Country	Logistic Time(Day)
America	United States	5
	Brazil	7
Europe	Germany	5
	United Kingdom	4
	Italy	5
Oceania	Australia	6
	New Zealand	7
Asia	India	6
	Japan	7
Middle East	Israel	6

DHL & FedEx Shipment Charges Reference	
Shipment charges(KG)	Reference DHL(USD\$)
0.00kg-1.00kg	USD\$60.00
1.00kg-2.00kg	USD\$70.00
2.00kg-3.00kg	USD\$80.00

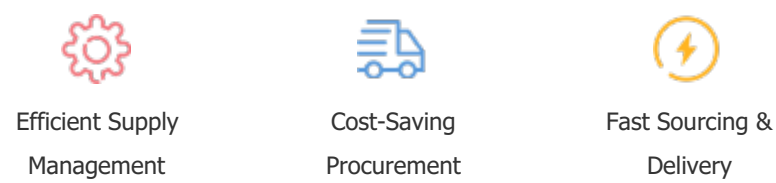
Note: The above table is for reference only. There may have some data bias for the uncontrollable factors.
Contact us if you have any questions.

Payment Support

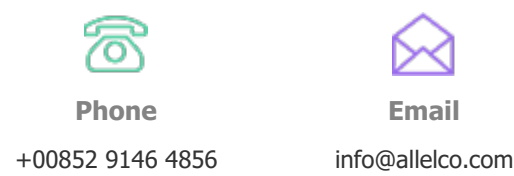
The payment method can be chosen from the methods shown below:
Wire Transfer (T/T, Bank Transfer), Western Union, Credit card, PayPal.



Your Faithful Supply Chain Partner -



Contact us if you have any questions.



Certifications & Memberships



View More

Contact us

Address: Flat/Rm C 13/F Harvard Commercial Building 105-111 Thomson Road, Wan Chai, Hong Kong

Phone: +00852 9146 4856

Fax: +00852 3010 8510

Email: info@allelco.com