

Image may be representation.
See specifications for product details.



S1A-E3/61T

Manufacturer Part Number	S1A-E3/61T
Manufacturer	Vishay General Semiconductor – Diodes Division
Allelco Part Number	32D-S1A-E3/61T
ECAD Model	PCB Symbol, Footprint & 3D Model
Parts Description	DIODE GEN PURP 50V 1A DO214AC
Package	DO-214AC, SMA
Data sheet	S1A, S1B, S1D, S1G, S1J, S1K, S1M.pdf
RoHs Status	ROHS3 Compliant

[Get a Quote](#)

S1A-E3/61T - Vishay General Semiconductor - Diodes Division. New Original in Stock. Download Linear Technology S1A-E3/61T datasheet/specifications on AllelcoElec.com.
Request a quote for S1A-E3/61T, please send us email: info@allelco.com

Specifications

S1A-E3/61T Tech Specifications

S1A-E3/61T - Vishay General Semiconductor - Diodes Division technical specifications, attributes, parameters

Product Attribute	Attribute Value	Product Attribute	Attribute Value
Manufacturer	Vishay General Semiconductor – Diodes Division	Package / Case	DO-214AC, SMA
Voltage - Forward (Vf) (Max) @ If	1.1 V @ 1 A	Package	Tape & Reel (TR)
Voltage - DC Reverse (Vr) (Max)	50 V	Operating Temperature - Junction	-55°C ~ 150°C
Technology	Standard	Mounting Type	Surface Mount
Supplier Device Package	DO-214AC (SMA)	Current - Reverse Leakage @ Vr	1 µA @ 50 V
Speed	Standard Recovery >500ns, > 200mA (Io)	Current - Average Rectified (Io)	1A
Series	-	Capacitance @ Vr, F	12pF @ 4V, 1MHz
Reverse Recovery Time (trr)	1.8 µs	Base Product Number	S1A

Parts with Similar Specifications

The three parts on the right have similar specifications to Vishay General Semiconductor - Diodes Division S1A-E3/61T

Product Attribute				
Part Number	S1A-E3/61T	S1A-13	S1A-M3/61T	S1A-13-F
Manufacturer	Vishay General Semiconductor - Diodes Division	Diodes Incorporated	Vishay General Semiconductor - Diodes Division	Diodes Incorporated
Supplier Device Package	DO-214AC (SMA)	SMA	DO-214AC (SMA)	SMA
Technology	Standard	Standard	Standard	Standard
Voltage - Forward (Vf) (Max) @ If	1.1 V @ 1 A	1.1 V @ 1 A	1.1 V @ 1 A	1.1 V @ 1 A
Current - Average Rectified (Io)	1A	1A	1A	1A
Capacitance @ Vr, F	12pF @ 4V, 1MHz	10pF @ 4V, 1MHz	12pF @ 4V, 1MHz	10pF @ 4V, 1MHz
Reverse Recovery Time (trr)	1.8 µs	3 µs	1.8 µs	3 µs
Operating Temperature - Junction	-55°C ~ 150°C	-65°C ~ 150°C	-55°C ~ 150°C	-65°C ~ 150°C
Speed	Standard Recovery >500ns, > 200mA (Io)	Standard Recovery >500ns, > 200mA (Io)	Standard Recovery >500ns, > 200mA (Io)	Standard Recovery >500ns, > 200mA (Io)
Series	-	-	-	-
Current - Reverse Leakage @ Vr	1 µA @ 50 V	5 µA @ 50 V	1 µA @ 50 V	5 µA @ 50 V
Mounting Type	Surface Mount	Surface Mount	Surface Mount	Surface Mount
Package	Tape & Reel (TR)	Tape & Reel (TR)	Tape & Reel (TR)	Tape & Reel (TR)
Package / Case	DO-214AC, SMA	DO-214AC, SMA	DO-214AC, SMA	DO-214AC, SMA
Base Product Number	S1A	S1A	S1A	S1A
Voltage - DC Reverse (Vr) (Max)	50 V	50 V	50 V	50 V

S1A-E3/61T Datasheet PDF

Download S1A-E3/61T pdf datasheets and Vishay General Semiconductor - Diodes Division documentation for S1A-E3/61T - Vishay General Semiconductor - Diodes Division.

Datasheets

[S1A, S1B, S1D, S1G, S1J, S1K, S1M.pdf](#)

Other Related Documents

[Packaging Information.pdf](#)

PCN Assembly/Origin

[Multiple Parts 21/Jun/2022.pdf](#)

Customers Also Interested in

Recommended Products



S1A0095



S1A0136A01-S0B0
Samsung Semiconductor



S1A0426C01-SO
Samsung Semiconductor



S1A0241A01-IO
Samsung Semiconductor



S1A0071X01-RO
Samsung Semiconductor



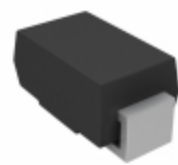
S1A-13
Diodes Incorporated
DIODE GEN PURP 50V 1A SMA



S1A0291X01-AO
Samsung Semiconductor



S1A010M01
KUANHSI



S1A-M3/61T
Vishay General Semiconductor -
Diodes Division
DIODE GEN PURP 50V 1A DO214AC



S1A0241A01-IO
Samsung Semiconductor



S1A0426C01-SOBO
Samsung Semiconductor



S1A0386A01-S0B0
Samsung Semiconductor



S1A0136A01-SO
Samsung Semiconductor



S1A0241A01-IOB0
Samsung Semiconductor



S1A/5AT
Electro-Films (EFI) / Vishay



S1A-13-F
Diodes Incorporated
DIODE GEN PURP 50V 1A SMA



S1A T/R
Taiwan Semiconductor



S1A-E3/61
Electro-Films (EFI) / Vishay

Shipment

Delivery Time

In-stock items can be shipped within 24 hours. Some parts will be arranged for delivery within 1-2 days from the date all items arrive at our warehouse. And Allelco ships order once a day at about 17:00, except Sunday. Once the goods are shipped, the estimated delivery time depends on the shipping methods and Delivery destination. The table below shows are the logistic time for some common countries.

Delivery Cost

> Use your express account for shipment if you have one.

> Use our account for the shipment. Refer to the table below for the approximate charges.

(Different time frame / countries / package size has different price.)

Delivery Method

> Global Common Shipment by DHL / UPS / FedEx / TNT / EMS / SF we support.

> Others more shipping ways, please get in touch with your customer manager.

Common Countries Logistic Time Reference		
Region	Country	Logistic Time(Day)
America	United States	5
	Brazil	7
Europe	Germany	5
	United Kingdom	4
	Italy	5
Oceania	Australia	6
	New Zealand	7
Asia	India	6
	Japan	7
Middle East	Israel	6

DHL & FedEx Shipment Charges Reference	
Shipment charges(KG)	Reference DHL(USD\$)
0.00kg-1.00kg	USD\$60.00
1.00kg-2.00kg	USD\$70.00
2.00kg-3.00kg	USD\$80.00

Note: The above table is for reference only. There may have some data bias for the uncontrollable factors.




Contact us if you have any questions.

Payment Support



The payment method can be chosen from the methods shown below:
Wire Transfer (T/T, Bank Transfer), Western Union, Credit card,
PayPal.



Your Faithful Supply Chain Partner -

 Efficient Supply Management
 Cost-Saving Procurement
 Fast Sourcing & Delivery

Contact us if you have any questions.

 Phone
 +00852 9146 4856
 Email
 info@allelco.com

Certifications & Memberships



View More