



Image may be representation.  
See specifications for product details.



## PM30CSJ060

Manufacturer Part Number	<b>PM30CSJ060</b>
Manufacturer	<b>Powerex, Inc.</b>
Allelco Part Number	32D-PM30CSJ060
ECAD Model	PCB Footprint and Symbol
Parts Description	MOD IPM 6PAC 600V 30A
Package	Power Module
Data sheet	<b>PM30CSJ060.pdf</b>

**Get a Quote**

PM30CSJ060 - Powerex Inc..New Original in Stock. Download Linear Technology PM30CSJ060 datasheet/specifications on AllelcoElec.com.  
Request a quote for PM30CSJ060, please send us email: [info@allelco.com](mailto:info@allelco.com)

### Specifications

PM30CSJ060 Tech Specifications  
PM30CSJ060 - Powerex Inc. technical specifications, attributes, parameters

Product Attribute	Attribute Value	Product Attribute	Attribute Value
Manufacturer	Powerex, Inc.	Package / Case	Power Module
Voltage - Isolation	2500Vrms	Package	Bulk
Voltage	600 V	Mounting Type	Chassis Mount
Type	IGBT	Current	30 A
Series	Intellimod™	Configuration	3 Phase

### Parts with Similar Specifications

The three parts on the right have similar specifications to Powerex Inc. PM30CSJ060

Product Attribute				
Part Number	PM30CSJ060	<a href="#">PM30CMA060-01</a>	<a href="#">PM30CTJ060-9</a>	<a href="#">PM30CTJ060-36</a>
Manufacturer	Powerex Inc.	MITSUBISHI	MITSUBISHI	MITSUBISHI
Package	Bulk	-	-	-
Voltage - Isolation	2500Vrms	-	-	-
Configuration	3 Phase	-	-	-
Current	30 A	-	-	-
Series	Intellimod™	-	-	-
Package / Case	Power Module	-	-	-
Type	IGBT	-	-	-
Voltage	600 V	-	-	-
Mounting Type	Chassis Mount	-	-	-

### PM30CSJ060 Datasheet PDF

Download PM30CSJ060 pdf datasheets and Powerex Inc. documentation for PM30CSJ060 - Powerex Inc..

#### Datasheets

[PM30CSJ060.pdf](#)

### Customers Also Interested in

#### Recommended Products

<b>PM30CMA060-01</b> MITSUBISHI IGBT Module	<b>PM30CTJ060-9</b> MITSUBISHI IGBT Module	<b>PM30CTJ060-36</b> MITSUBISHI IGBT Module	<b>PM30CLV060</b> MITSUBISHI IGBT Module	<b>PM30CTJ060</b> MITSUBISHI IGBT Module	<b>PM30CTJ060-3</b> MITSUBISHI IGBT Module
<b>PM30CLV060</b> MITSUBISHI IGBT Module	<b>PM30CMA060</b> MITSUBISHI IGBT Module	<b>PM30CMA060-1</b> MITSUBISHI IGBT Module	<b>PM30CTJ060-38L</b> MITSUBISHI IGBT Module	<b>PM30CTM060</b> MITSUBISHI IGBT Module	<b>PM30CSJ060-13</b> MITSUBISHI IGBT Module
<b>PM30CNH060</b> MITSUBISHI IGBT Module	<b>PM30CNA060</b> IGBT Module	<b>PM30CSJ060#300A</b> MITSUBISHI IGBT Module	<b>PM30CNJ060</b> MITSUBISHI IGBT Module	<b>PM30CHA060</b> MITSUBISHI IGBT Module	<b>PM30CSJ-060</b> MITSUBISHI IGBT Module

## Shipment

### Delivery Time

In-stock items can be shipped within 24 hours. Some parts will be arranged for delivery within 1-2 days from the date all items arrive at our warehouse. And Allelco ships order once a day at about 17:00, except Sunday. Once the goods are shipped, the estimated delivery time depends on the shipping methods and Delivery destination. The table below shows are the logistic time for some common countries.

### Delivery Cost

> Use your express account for shipment if you have one.

> Use our account for the shipment. Refer to the table below for the approximate charges.

(Different time frame / countries / package size has different price.)

### Delivery Method

> Global Common Shipment by DHL / UPS / FedEx / TNT / EMS / SF we support.

> Others more shipping ways, please get in touch with your customer manager.

Common Countries Logistic Time Reference		
Region	Country	Logistic Time(Day)
America	United States	5
	Brazil	7
Europe	Germany	5
	United Kingdom	4
	Italy	5
Oceania	Australia	6
	New Zealand	7
Asia	India	6
	Japan	7
Middle East	Israel	6

DHL & FedEx Shipment Charges Reference	
Shipment charges(KG)	Reference DHL(USD\$)
0.00kg-1.00kg	USD\$60.00
1.00kg-2.00kg	USD\$70.00
2.00kg-3.00kg	USD\$80.00

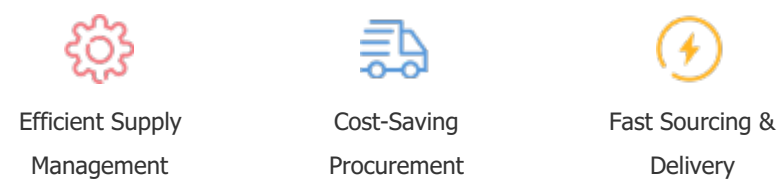
Note: The above table is for reference only. There may have some data bias for the uncontrollable factors.  
Contact us if you have any questions.

### Payment Support

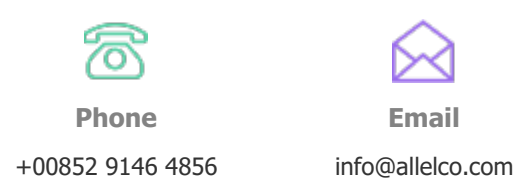
The payment method can be chosen from the methods shown below:  
Wire Transfer (T/T, Bank Transfer), Western Union, Credit card, PayPal.



### Your Faithful Supply Chain Partner -



Contact us if you have any questions.



### Certifications & Memberships



[View More](#)



### Contact us

Address: Flat/Rm C 13/F Harvard Commercial Building 105-111 Thomson Road, Wan Chai, Hong Kong  
Phone: +00852 9146 4856  
Fax: +00852 3010 8510  
Email: info@allelco.com

Copyright © 2012-2023 AllelcoElec.com. All rights reserved.