

Image may be representation.
See specifications for product details.



EP2C35F672C8

Manufacturer Part Number	EP2C35F672C8
Manufacturer	Intel
Allelco Part Number	32D-EP2C35F672C8
ECAD Model	Request Free CAD Models
Parts Description	IC FPGA 475 I/O 672FBGA
Package	672-BGA
Data sheet	Virtual JTAG Megafuntion Guide.pdf 672-FBGA Pkg Info.pdf

[Get a Quote](#)

EP2C35F672C8 - Intel.New Original in Stock. Download Linear Technology EP2C35F672C8 datasheet/specifications on AllelcoElec.com.
Request a quote for EP2C35F672C8, please send us email: info@allelco.com

Specifications

EP2C35F672C8 Tech Specifications

EP2C35F672C8 - Intel technical specifications, attributes, parameters

Product Attribute	Attribute Value	Product Attribute	Attribute Value
Manufacturer	Intel	Operating Temperature	0°C ~ 85°C (TJ)
Voltage - Supply	1.15V ~ 1.25V	Number of Logic Elements/Cells	33216
Total RAM Bits	483840	Number of LABs/CLBs	2076
Supplier Device Package	672-FBGA (27x27)	Number of I/O	475
Series	Cyclone® II	Mounting Type	Surface Mount
Package / Case	672-BGA	Base Product Number	EP2C35
Package	Tray		

Parts with Similar Specifications

The three parts on the right have similar specifications to Intel EP2C35F672C8

Product Attribute				
Part Number	EP2C35F672C8	EP2C35F672C7N	EP2C35F672I8N	EP2C50F484C8N
Manufacturer	Intel	Intel	Intel	Intel
Mounting Type	Surface Mount	Surface Mount	Surface Mount	Surface Mount
Number of LABs/CLBs	2076	2076	2076	3158
Total RAM Bits	483840	483840	483840	594432
Package / Case	672-BGA	672-BGA	672-BGA	484-BGA
Voltage - Supply	1.15V ~ 1.25V	1.15V ~ 1.25V	1.15V ~ 1.25V	1.15V ~ 1.25V
Series	Cyclone® II	Cyclone® II	Cyclone® II	Cyclone® II
Base Product Number	EP2C35	EP2C35	EP2C35	EP2C50
Number of Logic Elements/Cells	33216	33216	33216	50528
Supplier Device Package	672-FBGA (27x27)	672-FBGA (27x27)	672-FBGA (27x27)	484-FBGA (23x23)
Operating Temperature	0°C ~ 85°C (TJ)	0°C ~ 85°C (TJ)	-40°C ~ 100°C (TJ)	0°C ~ 85°C (TJ)
Package	Tray	Tray	Tray	Tray
Number of I/O	475	475	475	294

EP2C35F672C8 Datasheet PDF

Download EP2C35F672C8 pdf datasheets and Intel documentation for EP2C35F672C8 - Intel.

Datasheets

[Virtual JTAG Megafuntion Guide.pdf](#)

[672-FBGA Pkg Info.pdf](#)

PCN Design/Specification

[Mult Series Software Chgs 26/Mar/2020.pdf](#)

PCN Packaging

[Mult Dev Label CHG 24/Jan/2020.pdf](#)

[Mult Dev Label Chgs 24/Feb/2020.pdf](#)

Customers Also Interested in

Recommended Products

EP2C35F672C7N
Intel
IC FPGA 475 I/O 672FBGA

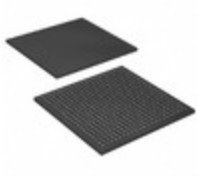
EP2C35F672I8N
Intel
IC FPGA 475 I/O 672FBGA

EP2C50F484C8N
Intel
IC FPGA 294 I/O 484FBGA

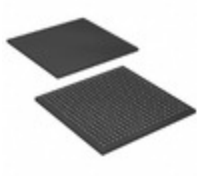
EP2C50F484C6N
Intel
IC FPGA 294 I/O 484FBGA

EP2C35F484I8
Intel
IC FPGA 322 I/O 484FBGA

EP2C35F484C6N
Intel
IC FPGA 322 I/O 484FBGA



EP2C35F484C8
Intel
IC FPGA 322 I/O 484FBGA



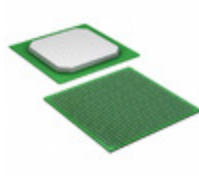
EP2C50F484C6
Intel
IC FPGA 294 I/O 484FBGA



EP2C35F672C7
Intel
IC FPGA 475 I/O 672FBGA



EP2C35F672C8N
Intel
IC FPGA 475 I/O 672FBGA



EP2C35F672I8
Intel
IC FPGA 475 I/O 672FBGA



EP2C35U484C6
Intel
IC FPGA 322 I/O 484UBGA



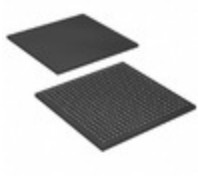
EP2C35F484C7N
Intel
IC FPGA 322 I/O 484FBGA



EP2C50F484C8
Intel
IC FPGA 294 I/O 484FBGA



EP2C50F484C7N
Intel
IC FPGA 294 I/O 484FBGA



EP2C35F484I8N
Intel
IC FPGA 322 I/O 484FBGA



EP2C35F484C8N
Intel
IC FPGA 322 I/O 484FBGA



EP2C35F672C6N
Intel
IC FPGA 475 I/O 672FBGA

Shipment

Delivery Time

In-stock items can be shipped within 24 hours. Some parts will be arranged for delivery within 1-2 days from the date all items arrive at our warehouse. And Allelco ships order once a day at about 17:00, except Sunday. Once the goods are shipped, the estimated delivery time depends on the shipping methods and Delivery destination. The table below shows are the logistic time for some common countries.

Delivery Cost

> Use your express account for shipment if you have one.

> Use our account for the shipment. Refer to the table below for the approximate charges.

(Different time frame / countries / package size has different price.)

Delivery Method

> Global Common Shipment by DHL / UPS / FedEx / TNT / EMS / SF we support.

> Others more shipping ways, please get in touch with your customer manager.

Common Countries Logistic Time Reference		
Region	Country	Logistic Time(Day)
America	United States	5
	Brazil	7
Europe	Germany	5
	United Kingdom	4
	Italy	5
Oceania	Australia	6
	New Zealand	7
Asia	India	6
	Japan	7
Middle East	Israel	6

DHL & FedEx Shipment Charges Reference	
Shipment charges(KG)	Reference DHL(USD\$)
0.00kg-1.00kg	USD\$60.00
1.00kg-2.00kg	USD\$70.00
2.00kg-3.00kg	USD\$80.00

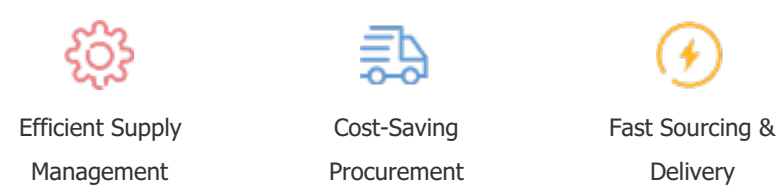
Note: The above table is for reference only. There may have some data bias for the uncontrollable factors.
Contact us if you have any questions.

Payment Support

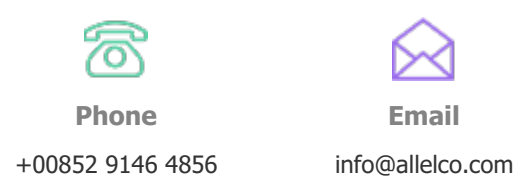
The payment method can be chosen from the methods shown below:
Wire Transfer (T/T, Bank Transfer), Western Union, Credit card, PayPal.



Your Faithful Supply Chain Partner -



Contact us if you have any questions.



Certifications & Memberships



View More