

Image may be representation.  
See specifications for product details.



## EPXA1F672C1

Manufacturer Part Number	<b>EPXA1F672C1</b>
Manufacturer	<b>Intel</b>
Allelco Part Number	32D-EPXA1F672C1
ECAD Model	Request Free CAD Models
Parts Description	IC EXCALIBUR ARM 672FBGA
Package	672-BBGA
Data sheet	<b>EPXA1, 4, 10 Excalibur Overview.pdf</b>

[Get a Quote](#)

EPXA1F672C1 - Intel.New Original in Stock. Download Linear Technology EPXA1F672C1 datasheet/specifications on AllelcoElec.com.  
Request a quote for EPXA1F672C1, please send us email: [info@allelco.com](mailto:info@allelco.com)

### Specifications

EPXA1F672C1 Tech Specifications  
EPXA1F672C1 - Intel technical specifications, attributes, parameters

Product Attribute	Attribute Value	Product Attribute	Attribute Value
Manufacturer	Intel	Mounting Type	Surface Mount
Voltage - Supply	1.8V	Interface	EBI/EMI, UART/USART
Supplier Device Package	672-FBGA (27x27)	FPGA SRAM	-
Speed	266 MHz	FPGA Gates	100K
Series	Excalibur™	FPGA Core Cells	4160
Program SRAM Bytes	32K	EEPROM Size	-
Package / Case	672-BBGA	Data SRAM Bytes	16K
Package	Tray	Core Type	32-Bit ARM9
Operating Temperature	0°C ~ 85°C		

### Parts with Similar Specifications

The three parts on the right have similar specifications to Intel EPXA1F672C1

Product Attribute				
Part Number	EPXA1F672C1	EPXA1F672C3	EPXA1F484C2	EPXA1F484I2
Manufacturer	Intel	Altera	Altera	Intel
EEPROM Size	-	-	-	-
FPGA SRAM	-	-	-	-
FPGA Gates	100K	100K	100K	100K
Package / Case	672-BBGA	672-BBGA, FCBGA	484-BBGA	484-BBGA
Interface	EBI/EMI, UART/USART	EBI/EMI, UART/USART	EBI/EMI, UART/USART	EBI/EMI, UART/USART
Voltage - Supply	1.8V	1.8V	1.8V	1.8V
Data SRAM Bytes	16K	16K	16K	16K
Operating Temperature	0°C ~ 85°C	0°C ~ 85°C	0°C ~ 85°C	-40°C ~ 100°C
Package	Tray	Tray	Tray	Tray
Series	Excalibur™	Excalibur™	Excalibur™	Excalibur™
Speed	266 MHz	166 MHz	200 MHz	200 MHz
FPGA Core Cells	4160	4160	4160	4160
Mounting Type	Surface Mount	Surface Mount	Surface Mount	Surface Mount
Supplier Device Package	672-FBGA (27x27)	672-FBGA (27x27)	484-FBGA (23x23)	484-FBGA (23x23)
Core Type	32-Bit ARM9	32-Bit ARM9	32-Bit ARM9	32-Bit ARM9
Program SRAM Bytes	32K	32K	32K	32K

### EPXA1F672C1 Datasheet PDF

Download EPXA1F672C1 pdf datasheets and Intel documentation for EPXA1F672C1 - Intel.

#### Datasheets

[EPXA1, 4, 10 Excalibur Overview.pdf](#)

#### PCN Packaging

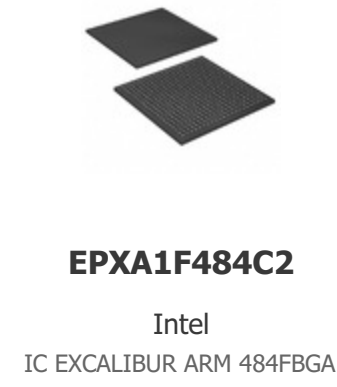
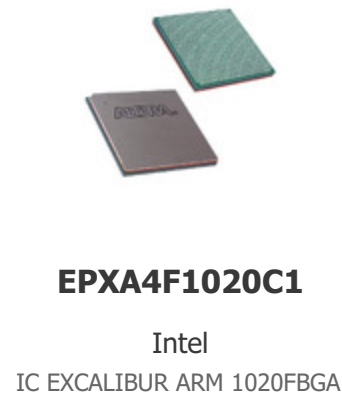
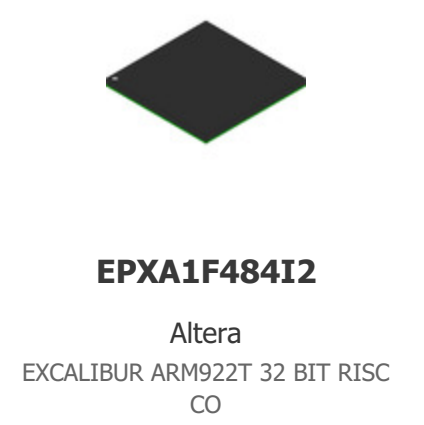
[All Dev Pkg Chg 1/Aug/2018.pdf](#)

#### PCN Obsolescence/ EOL

[Multiple Devices 04/May/2007.pdf](#)

### Customers Also Interested in

#### Recommended Products



## Shipment

### Delivery Time

In-stock items can be shipped within 24 hours. Some parts will be arranged for delivery within 1-2 days from the date all items arrive at our warehouse. And Allelco ships order once a day at about 17:00, except Sunday. Once the goods are shipped, the estimated delivery time depends on the shipping methods and Delivery destination. The table below shows are the logistic time for some common countries.

### Delivery Cost

> Use your express account for shipment if you have one.

> Use our account for the shipment. Refer to the table below for the approximate charges.

(Different time frame / countries / package size has different price.)

### Delivery Method

> Global Common Shipment by DHL / UPS / FedEx / TNT / EMS / SF we support.

> Others more shipping ways, please get in touch with your customer manager.

Common Countries Logistic Time Reference		
Region	Country	Logistic Time(Day)
America	United States	5
	Brazil	7
Europe	Germany	5
	United Kingdom	4
	Italy	5
Oceania	Australia	6
	New Zealand	7
Asia	India	6
	Japan	7
Middle East	Israel	6

DHL & FedEx Shipment Charges Reference	
Shipment charges(KG)	Reference DHL(USD\$)
0.00kg-1.00kg	USD\$60.00
1.00kg-2.00kg	USD\$70.00
2.00kg-3.00kg	USD\$80.00

Note: The above table is for reference only. There may have some data bias for the uncontrollable factors.  
Contact us if you have any questions.

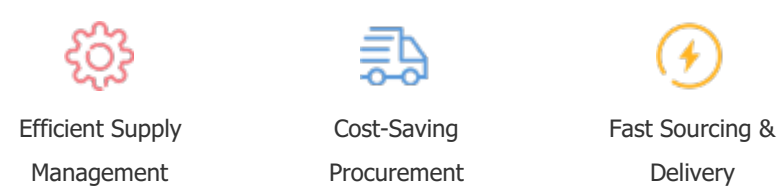
## Payment Support

The payment method can be chosen from the methods shown below:

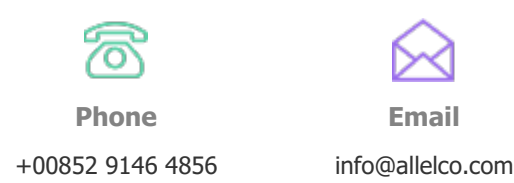
Wire Transfer (T/T, Bank Transfer), Western Union, Credit card, PayPal.



## Your Faithful Supply Chain Partner -



Contact us if you have any questions.



## Certifications & Memberships



[View More](#)



## Contact us

Address: Flat/Rm C 13/F Harvard Commercial Building 105-111 Thomson Road, Wan Chai, Hong Kong

Phone: +00852 9146 4856

Fax: +00852 3010 8510

Email: info@Allelco.com

Copyright © 2012-2023 AllelcoElec.com. All rights reserved.