



Image may be representation.  
See specifications for product details.



## ADM1171-1AUJZ-RL7

Manufacturer Part Number	<a href="#">ADM1171-1AUJZ-RL7</a>
Manufacturer	<a href="#">Analog Devices, Inc.</a>
Allelco Part Number	32D-ADM1171-1AUJZ-RL7
ECAD Model	<a href="#">Request Free CAD Models</a>
Parts Description	IC HOT SWAP CTRLR GP TSOT23-8
Package	SOT-23-8 Thin, TSOT-23-8
Data sheet	<a href="#">ADM1171.pdf</a>
RoHs Status	<b>ROHS3 Compliant</b>

[Get a Quote](#)

ADM1171-1AUJZ-RL7 - Analog Devices Inc..New Original in Stock. Download Linear Technology ADM1171-1AUJZ-RL7 datasheet/specifications on AllelcoElec.com.  
Request a quote for ADM1171-1AUJZ-RL7, please send us email: [info@allelco.com](mailto:info@allelco.com)

### Specifications

ADM1171-1AUJZ-RL7 Tech Specifications  
ADM1171-1AUJZ-RL7 - Analog Devices Inc. technical specifications, attributes, parameters

Product Attribute	Attribute Value	Product Attribute	Attribute Value
Manufacturer	Analog Devices, Inc.	Number of Channels	1
Voltage - Supply	2.7V ~ 16.5V	Mounting Type	Surface Mount
Type	Hot Swap Controller	Internal Switch(s)	No
Supplier Device Package	TSOT-23-8	Features	Auto Retry, I <sup>2</sup> C, UVLO
Series	-	Current - Supply	650 μA
Programmable Features	Current Limit, Fault Timeout, Turn On Voltage	Current - Output (Max)	-
Package / Case	SOT-23-8 Thin, TSOT-23-8	Base Product Number	ADM1171
Package	Tape & Reel (TR)	Applications	General Purpose
Operating Temperature	-40°C ~ 85°C		

### Parts with Similar Specifications

The three parts on the right have similar specifications to Analog Devices Inc. ADM1171-1AUJZ-RL7

Product Attribute				
Part Number	ADM1171-1AUJZ-RL7	ADM1175-2ARMZ-R7	ADM1170-2AUJZ-RL7	ADM1172-2AUJZ-RL7
Manufacturer	Analog Devices Inc.	Analog Devices Inc.	Analog Devices Inc.	Analog Devices Inc.
Package	Tape & Reel (TR)	Tape & Reel (TR)	Tape & Reel (TR)	Tape & Reel (TR)
Number of Channels	1	1	1	1
Series	-	-	-	-
Voltage - Supply	2.7V ~ 16.5V	3.15V ~ 16.5V	2.7V ~ 16.5V	2.7V ~ 16.5V
Current - Supply	650 μA	1.7 mA	650 μA	650 μA
Base Product Number	ADM1171	ADM1175	ADM1170	ADM1172
Mounting Type	Surface Mount	Surface Mount	Surface Mount	Surface Mount
Current - Output (Max)	-	-	-	-
Programmable Features	Current Limit, Fault Timeout, Turn On Voltage	Current Limit, Fault Timeout, Turn On Voltage	Current Limit, Fault Timeout, Turn On Voltage	Current Limit, Fault Timeout, Turn On Voltage
Applications	General Purpose	General Purpose	General Purpose	General Purpose
Supplier Device Package	TSOT-23-8	10-MSOP	TSOT-23-8	TSOT-23-8
Operating Temperature	-40°C ~ 85°C	-40°C ~ 85°C	-40°C ~ 85°C	-40°C ~ 85°C
Internal Switch(s)	No	No	No	No
Package / Case	SOT-23-8 Thin, TSOT-23-8	10-TFSOP, 10-MSOP (0.118", 3.00mm Width)	SOT-23-8 Thin, TSOT-23-8	SOT-23-8 Thin, TSOT-23-8
Type	Hot Swap Controller	Hot Swap Controller, Monitor	Hot Swap Controller	Hot Swap Controller
Features	Auto Retry, I <sup>2</sup> C, UVLO	I <sup>2</sup> C, Latched Fault, OVP, UVLO	I <sup>2</sup> C, Latched Fault, UVLO	Latched Fault, UVLO

### ADM1171-1AUJZ-RL7 Datasheet PDF

Download ADM1171-1AUJZ-RL7 pdf datasheets and Analog Devices Inc. documentation for ADM1171-1AUJZ-RL7 - Analog Devices Inc..

#### Datasheets

[ADM1171.pdf](#)

#### Other Related Documents

[Tape and Reel Packaging.pdf](#)

### Customers Also Interested in

#### Recommended Products



**ADM1168ASTZ-RL7**  
Analog Devices Inc.  
IC SEQUENCER/SUPERVISOR 32LQFP



**ADM1166ASUZ**

Analog Devices Inc.  
IC SEQUENCER/SUPERVISOR 48TQFP

**ADM1172-2AUJ-RL7**  
ADI (Analog Devices, Inc.)



**ADM1166ASUZ-REEL7**

Analog Devices Inc.  
IC SEQUENCER/SUPERVISOR 48TQFP

**ADM1169ACPZ**  
Analog Devices Inc.  
IC SEQUENCER/SUPERVISOR 40LFCSP



**ADM1170-2AUJZ-RL7**

Analog Devices Inc.  
IC HOT SWAP CTRLR GP TSOT23-8

**ADM1175-2ARMZ-R7**  
Analog Devices Inc.  
IC HOT SWAP CTRLR GP 10MSOP



**ADM1168ASTZ**

Analog Devices Inc.  
IC SEQUENCER/SUPERVISOR 32LQFP

**ADM1170-1AUJZ**  
ADI (Analog Devices, Inc.)



**ADM1172-2AUJZ-RL7**

Analog Devices Inc.  
IC HOT SWAP CTRLR GP TSOT23-8

**ADM1169ASTZ**  
Analog Devices Inc.  
IC SEQUENCER/SUPERVISOR 32LQFP



**ADM1171-2AUJ-RL7**

ADI (Analog Devices, Inc.)



**ADM1172-1AUJZ**

ADI (Analog Devices, Inc.)



**ADM1169ACP**

ADI (Analog Devices, Inc.)



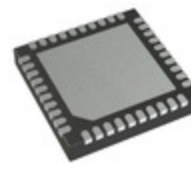
**ADM1171-2AUJZ-RL7**

Analog Devices Inc.  
IC HOT SWAP CTRLR GP TSOT23-8



**ADM1172-1AUJZ-RL7**

Analog Devices Inc.  
IC HOT SWAP CTRLR GP TSOT23-8



**ADM1166ACPZ-REEL**

Analog Devices Inc.  
IC SEQUENCER/SUPERVISOR 40LFCSP



**ADM1176-1ARMZ-R7**

Analog Devices Inc.  
IC HOT SWAP CTRLR GP 10MSOP

## Shipment

### Delivery Time

In-stock items can be shipped within 24 hours. Some parts will be arranged for delivery within 1-2 days from the date all items arrive at our warehouse. And Allelco ships order once a day at about 17:00, except Sunday. Once the goods are shipped, the estimated delivery time depends on the shipping methods and Delivery destination. The table below shows are the logistic time for some common countries.

### Delivery Cost

> Use your express account for shipment if you have one.

> Use our account for the shipment. Refer to the table below for the approximate charges.

(Different time frame / countries / package size has different price.)

### Delivery Method

> Global Common Shipment by DHL / UPS / FedEx / TNT / EMS / SF we support.

> Others more shipping ways, please get in touch with your customer manager.

Common Countries Logistic Time Reference		
Region	Country	Logistic Time(Day)
America	United States	5
	Brazil	7
Europe	Germany	5
	United Kingdom	4
	Italy	5
Oceania	Australia	6
	New Zealand	7
Asia	India	6
	Japan	7
Middle East	Israel	6

DHL & FedEx Shipment Charges Reference	
Shipment charges(KG)	Reference DHL(USD\$)
0.00kg-1.00kg	USD\$60.00
1.00kg-2.00kg	USD\$70.00
2.00kg-3.00kg	USD\$80.00

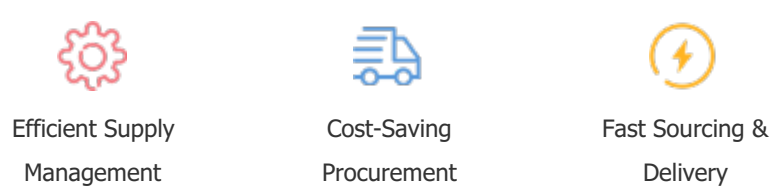
Note: The above table is for reference only. There may have some data bias for the uncontrollable factors.  
Contact us if you have any questions.

### Payment Support

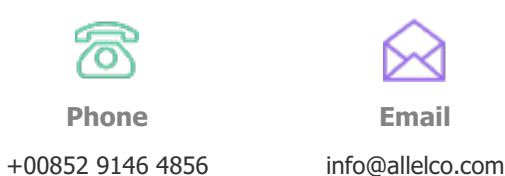
The payment method can be chosen from the methods shown below:  
Wire Transfer (T/T, Bank Transfer), Western Union, Credit card, PayPal.



### Your Faithful Supply Chain Partner -



Contact us if you have any questions.



### Certifications & Memberships



[View More](#)



### Contact us

Address: Flat/Rm C 13/F Harvard Commercial Building 105-111 Thomson Road, Wan Chai, Hong Kong  
Phone: +00852 9146 4856  
Fax: +00852 3010 8510  
Email: info@Allelco.com