

Image may be representation.  
See specifications for product details.



## S1M-E3/61T

Manufacturer Part Number	<b>S1M-E3/61T</b>
Manufacturer	<b>Vishay General Semiconductor – Diodes Division</b>
Allelco Part Number	32D-S1M-E3/61T
ECAD Model	PCB Symbol, Footprint & 3D Mode
Parts Description	DIODE GEN PURP 1KV 1A DO214AC
Package	DO-214AC, SMA
Data sheet	<b>S1A, S1B, S1D, S1G, S1J, S1K, S1M.pdf</b>
RoHs Status	ROHS3 Compliant

[Get a Quote](#)

S1M-E3/61T - Vishay General Semiconductor - Diodes Division. New Original in Stock. Download Linear Technology S1M-E3/61T datasheet/specifications on AllelcoElec.com.  
Request a quote for S1M-E3/61T, please send us email: [info@allelco.com](mailto:info@allelco.com)

### Specifications

S1M-E3/61T Tech Specifications  
S1M-E3/61T - Vishay General Semiconductor - Diodes Division technical specifications, attributes, parameters

Product Attribute	Attribute Value	Product Attribute	Attribute Value
Manufacturer	Vishay General Semiconductor – Diodes Division	Package / Case	DO-214AC, SMA
Voltage - Forward (Vf) (Max) @ If	1.1 V @ 1 A	Package	Tape & Reel (TR)
Voltage - DC Reverse (Vr) (Max)	1000 V	Operating Temperature - Junction	-55°C ~ 150°C
Technology	Standard	Mounting Type	Surface Mount
Supplier Device Package	DO-214AC (SMA)	Current - Reverse Leakage @ Vr	5 µA @ 1000 V
Speed	Standard Recovery >500ns, > 200mA (Io)	Current - Average Rectified (Io)	1A
Series	-	Capacitance @ Vr, F	12pF @ 4V, 1MHz
Reverse Recovery Time (trr)	1.8 µs	Base Product Number	S1M

### Parts with Similar Specifications

The three parts on the right have similar specifications to Vishay General Semiconductor - Diodes Division S1M-E3/61T

Product Attribute				
Part Number	S1M-E3/61T	S1M-13	S1M-E3/5AT	S1M-13-F
Manufacturer	Vishay General Semiconductor - Diodes Division	Diodes Incorporated	Vishay General Semiconductor - Diodes Division	Diodes Incorporated
Package / Case	DO-214AC, SMA	DO-214AC, SMA	DO-214AC, SMA	DO-214AC, SMA
Voltage - DC Reverse (Vr) (Max)	1000 V	1000 V	1000 V	1000 V
Technology	Standard	Standard	Standard	Standard
Supplier Device Package	DO-214AC (SMA)	SMA	DO-214AC (SMA)	SMA
Speed	Standard Recovery >500ns, > 200mA (Io)	Standard Recovery >500ns, > 200mA (Io)	Standard Recovery >500ns, > 200mA (Io)	Standard Recovery >500ns, > 200mA (Io)
Base Product Number	S1M	S1M	S1M	S1M
Current - Average Rectified (Io)	1A	1A	1A	1A
Mounting Type	Surface Mount	Surface Mount	Surface Mount	Surface Mount
Package	Tape & Reel (TR)	Tape & Reel (TR)	Tape & Reel (TR)	Tape & Reel (TR)
Operating Temperature - Junction	-55°C ~ 150°C	-65°C ~ 150°C	-55°C ~ 150°C	-65°C ~ 150°C
Series	-	-	-	-
Current - Reverse Leakage @ Vr	5 µA @ 1000 V	5 µA @ 1000 V	5 µA @ 1000 V	5 µA @ 1000 V
Reverse Recovery Time (trr)	1.8 µs	3 µs	1.8 µs	3 µs
Voltage - Forward (Vf) (Max) @ If	1.1 V @ 1 A	1.1 V @ 1 A	1.1 V @ 1 A	1.1 V @ 1 A
Capacitance @ Vr, F	12pF @ 4V, 1MHz	10pF @ 4V, 1MHz	12pF @ 4V, 1MHz	10pF @ 4V, 1MHz

### S1M-E3/61T Datasheet PDF

Download S1M-E3/61T pdf datasheets and Vishay General Semiconductor - Diodes Division documentation for S1M-E3/61T - Vishay General Semiconductor - Diodes Division.

#### Datasheets

[S1A, S1B, S1D, S1G, S1J, S1K, S1M.pdf](#)

#### Other Related Documents

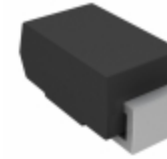
[Packaging Information.pdf](#)

#### PCN Assembly/Origin

[Multiple Parts 21/Jun/2022.pdf](#)

### Customers Also Interested in

#### Recommended Products



**S1M-13-G-90**  
Diodes Incorporated

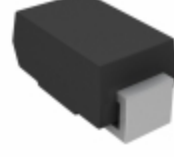
**S1M8690X01-J070**  
Samsung Semiconductor

**S1M-SMA**  
SUNG

**S1M-13**  
Diodes Incorporated  
DIODE GEN PURP 1KV 1A SMA

**S1M-E3/5AT**  
Vishay General Semiconductor -  
Diodes Division  
DIODE GEN PURP 1KV 1A DO214AC

**S1M8656A01-F0T0**  
Samsung Semiconductor



**S1M-13-F**  
Diodes Incorporated  
DIODE GEN PURP 1KV 1A SMA

**S1M-M3/61T**  
Vishay General Semiconductor -  
Diodes Division  
DIODE GEN PURP 1KV 1A DO214AC

**S1M R2**  
Taiwan Semiconductor

**S1M T/R**  
PANJIT

**S1M8662A01-Z070**  
Samsung Semiconductor

**S1M-E3**  
Electro-Films (EFI) / Vishay



**S1M-TR**  
GOODARK

**S1M8680X01-Z0T0**  
Samsung Semiconductor

**S1M-E3/11T**  
Electro-Films (EFI) / Vishay

**S1M R3G**  
Taiwan Semiconductor  
Corporation  
DIODE GEN PURP 1KV 1A DO214AC

**S1M-HE3/61T**  
Electro-Films (EFI) / Vishay

**S1M-13T**  
Electro-Films (EFI) / Vishay

## Shipment

### Delivery Time

In-stock items can be shipped within 24 hours. Some parts will be arranged for delivery within 1-2 days from the date all items arrive at our warehouse. And Allelco ships order once a day at about 17:00, except Sunday. Once the goods are shipped, the estimated delivery time depends on the shipping methods and Delivery destination. The table below shows are the logistic time for some common countries.

### Delivery Cost

- > Use your express account for shipment if you have one.
  - > Use our account for the shipment. Refer to the table below for the approximate charges.
- (Different time frame / countries / package size has different price.)

### Delivery Method

- > Global Common Shipment by DHL / UPS / FedEx / TNT / EMS / SF we support.
- > Others more shipping ways, please get in touch with your customer manager.

Common Countries Logistic Time Reference		
Region	Country	Logistic Time(Day)
America	United States	5
	Brazil	7
Europe	Germany	5
	United Kingdom	4
	Italy	5
Oceania	Australia	6
	New Zealand	7
Asia	India	6
	Japan	7
Middle East	Israel	6

DHL & FedEx Shipment Charges Reference	
Shipment charges(KG)	Reference DHL(USD\$)
0.00kg-1.00kg	USD\$60.00
1.00kg-2.00kg	USD\$70.00
2.00kg-3.00kg	USD\$80.00

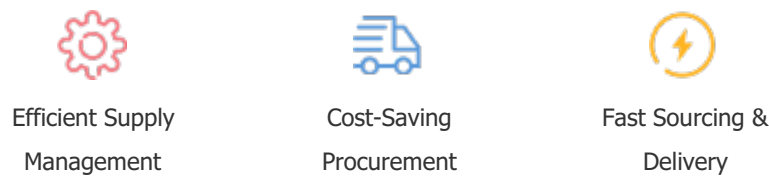
Note: The above table is for reference only. There may have some data bias for the uncontrollable factors.  
Contact us if you have any questions.

## Payment Support

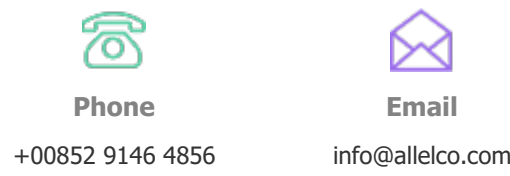
The payment method can be chosen from the methods shown below:  
Wire Transfer (T/T, Bank Transfer), Western Union, Credit card,  
PayPal.



## Your Faithful Supply Chain Partner -



Contact us if you have any questions.



## Certifications & Memberships



[View More](#)