



STM32H725REV6

Manufacturer Part Number	STM32H725REV6	 	
Manufacturer	STMicroelectronics		
Allelco Part Number	32D-STM32H725REV6		
ECAD Model	 PCB Symbol, Footprint & 3D Mode		
Parts Description	CONTROLLER / PROCESSOR		
Package	68-VFQFN Exposed Pad		
Data sheet	STM32H725REV6.pdf		
RoHs Status	 ROHS3 Compliant		

STM32H725REV6 - STMicroelectronics.New Original in Stock. Download Linear Technology STM32H725REV6 datasheet/specifications on AllelcoElec.com.

Request a quote for STM32H725REV6, please send us email: info@allelco.com

Specifications





STM32H725REV6 Tech Specifications

STM32H725REV6 - STMicroelectronics technical specifications, attributes, parameters

Product Attribute	Attribute Value	Product Attribute	Attribute Value
Manufacturer	STMicroelectronics	Package	Bulk
Voltage - Supply (Vcc/Vdd)	1.71V ~ 3.6V	Oscillator Type	External, Internal
Supplier Device Package	68-VFQFPN (8x8)	Operating Temperature	-40°C ~ 85°C (TA)
Speed	550MHz	Number of I/O	46
Series	STM32H7	Mounting Type	Surface Mount
RAM Size	564K x 8	EEPROM Size	-
Program Memory Type	FLASH	Data Converters	A/D 28x12/16b; D/A 2x12b
Program Memory Size	512KB (512K x 8)	Core Size	32-Bit
Peripherals	Brown-out Detect/Reset, DMA, I ² S, LCD, POR, PWM, WDT	Core Processor	ARM® Cortex®-M7
Package / Case	68-VFQFN Exposed Pad	Connectivity	CANbus, EBI/EMI, I ² C, IrDA, LINbus, MDIO, MMC/SD/SDIO, QSPI, SAI, SPDIF, SPI, SWPMI, UART/USART, USB OTG

Parts with Similar Specifications

The three parts on the right have similar specifications to STMicroelectronics STM32H725REV6

Product Attribute				
Part Number	STM32H725REV6	STM32H735IGT6	STM32H733VGT6	STM32H723VGH6
Manufacturer	STMicroelectronics	STMicroelectronics	STMicroelectronics	STMicroelectronics
EEPROM Size	-	-	-	-
Program Memory Size	512KB (512K x 8)	1MB (1M x 8)	1MB (1M x 8)	1MB (1M x 8)
Package / Case	68-VFQFN Exposed Pad	176-LQFP	100-LQFP	100-TFBGA
Series	STM32H7	STM32H7	STM32H7	STM32H7
Core Processor	ARM® Cortex®-M7	ARM® Cortex®-M7	ARM® Cortex®-M7	ARM® Cortex®-M7
Supplier Device Package	68-VFQFPN (8x8)	176-LQFP (24x24)	100-LQFP (14x14)	100-TFBGA (8x8)
Peripherals	Brown-out Detect/Reset, DMA, I ² S, LCD, POR, PWM, WDT	Brown-out Detect/Reset, DMA, I ² S, LCD, POR, PWM, WDT	Brown-out Detect/Reset, DMA, I ² S, LCD, POR, PWM, WDT	Brown-out Detect/Reset, DMA, LCD, POR, PWM, WDT
Oscillator Type	External, Internal	External, Internal	Internal	External, Internal
Operating Temperature	-40°C ~ 85°C (TA)	-40°C ~ 85°C (TA)	-40°C ~ 85°C (TA)	-40°C ~ 85°C (TA)
Data Converters	A/D 28x12/16b; D/A 2x12b	A/D 12x12b, 30x16b; D/A 2x12b	A/D 12x12/b, 18x16b; D/A 2x12b	A/D 17x12b, 26x16b; D/A 2x12b
Program Memory Type	FLASH	FLASH	FLASH	FLASH
Core Size	32-Bit	32-Bit	32-Bit Single-Core	32-Bit Single-Core
Speed	550MHz	550MHz	550MHz	550MHz
Package	Bulk	Bulk	Tray	Tray
Connectivity	CANbus, EBI/EMI, I ² C, IrDA, LINbus, MDIO, MMC/SD/SDIO, QSPI, SAI, SPDIF, SPI, SWPMI, UART/USART, USB OTG	CANbus, EBI/EMI, Ethernet, I ² C, IrDA, LINbus, MDIO, MMC/SD/SDIO, QSPI, SAI, SPDIF, SPI, SWPMI, UART/USART, USB OTG	CANbus, EBI/EMI, Ethernet, I ² C, IrDA, LINbus, MDIO, MMC/SD/SDIO, QSPI, SAI, SPDIF, SPI, SWPMI, UART/USART, USB OTG	CANbus, Ethernet, I ² C, IrDA, LINbus, SAI, SmartCard, SPDIF, SPI, UART/USART, USB OTG
RAM Size	564K x 8	560K x 8	564K x 8	564K x 8
Mounting Type	Surface Mount	Surface Mount	Surface Mount	Surface Mount
Number of I/O	46	119	80	80
Voltage - Supply (Vcc/Vdd)	1.71V ~ 3.6V	1.62V ~ 3.6V	1.71V ~ 3.6V	1.62V ~ 3.6V

Customers Also Interested in

Recommended Products



STM32GC102CB,32

STMicroelectronics

STM32H735IGT6

STMicroelectronics
CONTROLLER / PROCESSOR

STM32H733VGT6

STMicroelectronics
IC MCU 32BIT 1MB FLASH 100LQFP

STM32H723VGH6

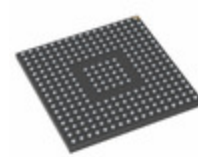
STMicroelectronics
IC MCU 32BIT 1MB FLASH 100TFBGA

STM32H723VGT6

STMicroelectronics
IC MCU 32BIT 1MB FLASH 100LQFP

STM32H725VGT6

STMicroelectronics
IC MCU 32BIT 1MB FLASH 100LQFP



STM32H723ZET6
STMicroelectronics
CONTROLLER / PROCESSOR

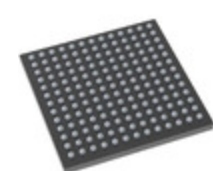
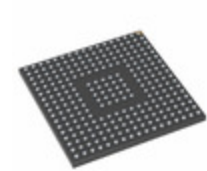
STM32H735IGK3
STMicroelectronics
CONTROLLER / PROCESSOR

STM32H723ZGT6
STMicroelectronics
IC MCU 32BIT 1MB FLASH 144LQFP

STM32H725IGK6
STMicroelectronics
IC MCU 32BIT 1MB FLASH 176UFBGA

STM32G491VET6
STMicroelectronics
IC MCU 32BIT 512KB FLASH 100LQFP

STM32H723VEH6
STMicroelectronics
CONTROLLER / PROCESSOR



STM32H730ZBT6
STMicroelectronics
IC MCU 32BIT 128KB FLASH 144LQFP

STM32H742IGK6
STMicroelectronics
IC MCU 32BIT 1MB FLASH 176UFBGA

STM32H725ZGT6
STMicroelectronics
IC MCU 32BIT 1MB FLASH 144LQFP

STM32H723VET6
STMicroelectronics
IC MCU 32BIT 512KB FLASH 100LQFP

STM32H725AGI6
STMicroelectronics
IC MCU 32BIT 1MB FLASH 169UFBGA

STM32H730VBT6
STMicroelectronics
IC MCU 32BIT 128KB FLASH 100LQFP

Shipment

Delivery Time

In-stock items can be shipped within 24 hours. Some parts will be arranged for delivery within 1-2 days from the date all items arrive at our warehouse. And Allelco ships order once a day at about 17:00, except Sunday. Once the goods are shipped, the estimated delivery time depends on the shipping methods and Delivery destination. The table below shows are the logistic time for some common countries.

Delivery Cost

- > Use your express account for shipment if you have one.
 - > Use our account for the shipment. Refer to the table below for the approximate charges.
- (Different time frame / countries / package size has different price.)

Delivery Method

- > Global Common Shipment by DHL / UPS / FedEx / TNT / EMS / SF we support.
- > Others more shipping ways, please get in touch with your customer manager.

Common Countries Logistic Time Reference		
Region	Country	Logistic Time(Day)
America	United States	5
	Brazil	7
Europe	Germany	5
	United Kingdom	4
	Italy	5
Oceania	Australia	6
	New Zealand	7
Asia	India	6
	Japan	7
Middle East	Israel	6

DHL & FedEx Shipment Charges Reference	
Shipment charges(KG)	Reference DHL(USD\$)
0.00kg-1.00kg	USD\$60.00
1.00kg-2.00kg	USD\$70.00
2.00kg-3.00kg	USD\$80.00

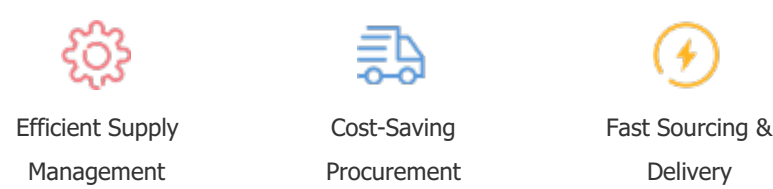
Note: The above table is for reference only. There may have some data bias for the uncontrollable factors. Contact us if you have any questions.

Payment Support

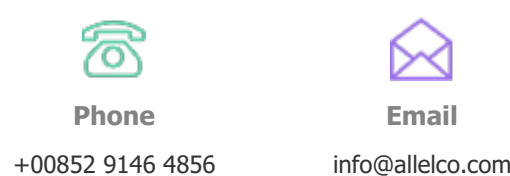
The payment method can be chosen from the methods shown below:
Wire Transfer (T/T, Bank Transfer), Western Union, Credit card, PayPal.



Your Faithful Supply Chain Partner -



Contact us if you have any questions.



Certifications & Memberships



[View More](#)



Contact us

Address: Flat/Rm C 13/F Harvard Commercial Building 105-111 Thomson Road, Wan Chai, Hong Kong
Phone: +00852 9146 4856
Fax: +00852 3010 8510
Email: info@Allelco.com