

Image may be representation.
See specifications for product details.



MAX823SEUK+T

Manufacturer Part Number	MAX823SEUK+T
Manufacturer	Maxim Integrated
Allelco Part Number	32D-MAX823SEUK+T
ECAD Model	Request Free CAD Models
Parts Description	IC SUPERVISOR 1 CHANNEL SOT23-5
Package	SC-74A, SOT-753
Data sheet	MAX823-825.pdf
RoHs Status	ROHS3 Compliant

Get a Quote

MAX823SEUK+T - Analog Devices Inc./Maxim Integrated.New Original in Stock. Download Linear Technology MAX823SEUK+T datasheet/specifications on AllelcoElec.com.
Request a quote for MAX823SEUK+T, please send us email: info@allelco.com

Specifications

MAX823SEUK+T Tech Specifications
MAX823SEUK+T - Analog Devices Inc./Maxim Integrated technical specifications, attributes, parameters

Product Attribute	Attribute Value	Product Attribute	Attribute Value
Manufacturer	Maxim Integrated	Package / Case	SC-74A, SOT-753
Voltage - Threshold	2.93V	Package	Tape & Reel (TR)
Type	Simple Reset/Power-On Reset	Output	Push-Pull, Totem Pole
Supplier Device Package	SOT-23-5	Operating Temperature	-40°C ~ 125°C (TA)
Series	-	Number of Voltages Monitored	1
Reset Timeout	140ms Minimum	Mounting Type	Surface Mount
Reset	Active Low	Base Product Number	MAX823

Parts with Similar Specifications

The three parts on the right have similar specifications to Analog Devices Inc./Maxim Integrated MAX823SEUK+T

Product Attribute				
Part Number	MAX823SEUK+T	MAX823SEUK	MAX823REUK-T	MAX823REUK
Manufacturer	Analog Devices Inc./Maxim Integrated	Analog Devices Inc./Maxim Integrated	Analog Devices Inc./Maxim Integrated	Analog Devices Inc./Maxim Integrated
Reset Timeout	140ms Minimum	140ms Minimum	140ms Minimum	140ms Minimum
Series	-	-	-	-
Package / Case	SC-74A, SOT-753	SC-74A, SOT-753	SC-74A, SOT-753	SC-74A, SOT-753
Voltage - Threshold	2.93V	2.93V	2.63V	2.63V
Reset	Active Low	Active Low	Active Low	Active Low
Supplier Device Package	SOT-23-5	SOT-23-5	SOT-23-5	SOT-23-5
Package	Tape & Reel (TR)	Bulk	Bulk	Bulk
Base Product Number	MAX823	MAX823	MAX823	MAX823
Mounting Type	Surface Mount	Surface Mount	Surface Mount	Surface Mount
Operating Temperature	-40°C ~ 125°C (TA)	-40°C ~ 125°C (TA)	-40°C ~ 125°C (TA)	-40°C ~ 125°C (TA)
Output	Push-Pull, Totem Pole	Push-Pull, Totem Pole	Push-Pull, Totem Pole	Push-Pull, Totem Pole
Type	Simple Reset/Power-On Reset	Simple Reset/Power-On Reset	Simple Reset/Power-On Reset	Simple Reset/Power-On Reset
Number of Voltages Monitored	1	1	1	1

MAX823SEUK+T Datasheet PDF

Download MAX823SEUK+T pdf datasheets and Analog Devices Inc./Maxim Integrated documentation for MAX823SEUK+T - Analog Devices Inc./Maxim Integrated.

Datasheets

[MAX823-825.pdf](#)

Environmental Information

[Maxim Integrated REACH.pdf](#)

[Maxim Integrated RoHS Cert.pdf](#)

[Red Phosphorous Certificate.pdf](#)

Part Numbering Guide

[Part Numbering System.pdf](#)

Application Notes

[Analog ICs for Low Voltage Systems.pdf](#)

[Watchdogs Improve System Reliability-How to Choose.pdf](#)

[Supervisory Circuits Keep Your Microprocessor Unde.pdf](#)

Customers Also Interested in

Recommended Products

**MAX823SEUK**Analog Devices Inc./Maxim Integrated
IC SUPERVISOR MPU**MAX823REUK-T**Analog Devices Inc./Maxim Integrated
IC SUPERVISOR MPU**MAX823REUK**Analog Devices Inc./Maxim Integrated
IC SUPERVISOR MPU**MAX823REUK+T**Analog Devices Inc./Maxim Integrated
IC SUPERVISOR 1 CHANNEL SOT23-5**MAX823LEXK+T**Analog Devices Inc./Maxim Integrated
IC SUPERVISOR MPU SC70-5**MAX823TEUK+T**Analog Devices Inc./Maxim Integrated
IC SUPERVISOR 1 CHANNEL SOT23-5**MAX823TEUK-T**Analog Devices Inc./Maxim Integrated
IC SUPERVISOR 1 CHANNEL SOT23-5**MAX823MEUK**Analog Devices Inc./Maxim Integrated
IC SUPERVISOR MPU**MAX823REK+T**Analog Devices Inc./Maxim Integrated
IC SUPERVISOR MPU SC70-5**MAX823TEK+T**Analog Devices Inc./Maxim Integrated
IC SUPERVISOR 1 CHANNEL SC70-5**MAX823LEUK-T**Analog Devices Inc./Maxim Integrated
IC SUPERVISOR MPU**MAX823MEUK-T**Analog Devices Inc./Maxim Integrated
IC SUPERVISOR MPU**MAX823YEXK+T**Analog Devices Inc./Maxim Integrated
IC SUPERVISOR 1 CHANNEL SC70-5**MAX823SEK+T**Analog Devices Inc./Maxim Integrated
IC SUPERVISOR 1 CHANNEL SC70-5**MAX823TEUK**Analog Devices Inc./Maxim Integrated
IC SUPERVISOR MPU**MAX823SEUK-T**Analog Devices Inc./Maxim Integrated
IC SUPERVISOR 1 CHANNEL SOT23-5**MAX823MEUK+T**Analog Devices Inc./Maxim Integrated
IC SUPERVISOR 1 CHANNEL SOT23-5**MAX824LEUK**Analog Devices Inc./Maxim Integrated
IC MPU SPRVSR CIRC WDT SOT23-5

Shipment

Delivery Time

In-stock items can be shipped within 24 hours. Some parts will be arranged for delivery within 1-2 days from the date all items arrive at our warehouse. And Allelco ships order once a day at about 17:00, except Sunday. Once the goods are shipped, the estimated delivery time depends on the shipping methods and Delivery destination. The table below shows are the logistic time for some common countries.

Delivery Cost

> Use your express account for shipment if you have one.

> Use our account for the shipment. Refer to the table below for the approximate charges.

(Different time frame / countries / package size has different price.)

Delivery Method

> Global Common Shipment by DHL / UPS / FedEx / TNT / EMS / SF we support.

> Others more shipping ways, please get in touch with your customer manager.

Common Countries Logistic Time Reference		
Region	Country	Logistic Time(Day)
America	United States	5
	Brazil	7
Europe	Germany	5
	United Kingdom	4
	Italy	5
Oceania	Australia	6
	New Zealand	7
Asia	India	6
	Japan	7
Middle East	Israel	6

DHL & FedEx Shipment Charges Reference	
Shipment charges(KG)	Reference DHL(USD\$)
0.00kg-1.00kg	USD\$60.00
1.00kg-2.00kg	USD\$70.00
2.00kg-3.00kg	USD\$80.00

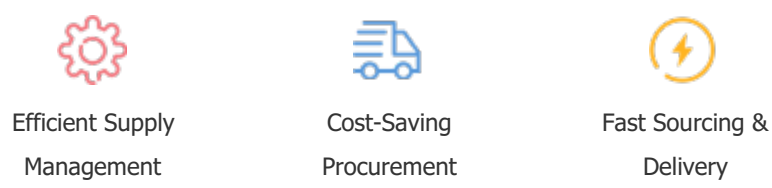
Note: The above table is for reference only. There may have some data bias for the uncontrollable factors.
Contact us if you have any questions.

Payment Support

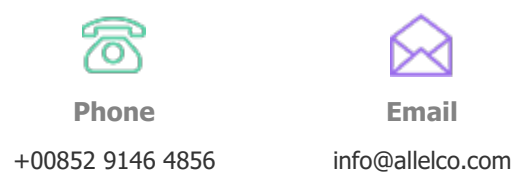
The payment method can be chosen from the methods shown below:
Wire Transfer (T/T, Bank Transfer), Western Union, Credit card, PayPal.



Your Faithful Supply Chain Partner -



Contact us if you have any questions.



Certifications & Memberships



[View More](#)