



Image may be representation.
See specifications for product details.



SS12P2L-M3/86A

Manufacturer Part Number	SS12P2L-M3/86A
Manufacturer	Vishay General Semiconductor – Diodes Division
Allelco Part Number	32D-SS12P2L-M3/86A
ECAD Model	PCB Symbol, Footprint & 3D Model
Parts Description	DIODE SCHOTTKY 20V 12A TO277A
Package	TO-277, 3-PowerDFN
Data sheet	SS12P2L & SS12P3L.pdf
RoHs Status	ROHS3 Compliant

[Get a Quote](#)

SS12P2L-M3/86A - Vishay General Semiconductor - Diodes Division. New Original in Stock. Download Linear Technology SS12P2L-M3/86A datasheet/specifications on AllelcoElec.com.
Request a quote for SS12P2L-M3/86A, please send us email: info@allelco.com

Specifications

SS12P2L-M3/86A Tech Specifications
SS12P2L-M3/86A - Vishay General Semiconductor - Diodes Division technical specifications, attributes, parameters

Product Attribute	Attribute Value	Product Attribute	Attribute Value
Manufacturer	Vishay General Semiconductor – Diodes Division	Package	Tape & Reel (TR)
Voltage - Forward (Vf) (Max) @ If	560 mV @ 12 A	Operating Temperature - Junction	-55°C ~ 150°C
Voltage - DC Reverse (Vr) (Max)	20 V	Mounting Type	Surface Mount
Technology	Schottky	Current - Reverse Leakage @ Vr	1 mA @ 20 V
Supplier Device Package	TO-277A (SMPC)	Current - Average Rectified (Io)	12A
Speed	Fast Recovery =< 500ns, > 200mA (Io)	Capacitance @ Vr, F	930pF @ 4V, 1MHz
Series	eSMP®	Base Product Number	SS12P2
Package / Case	TO-277, 3-PowerDFN		

Parts with Similar Specifications

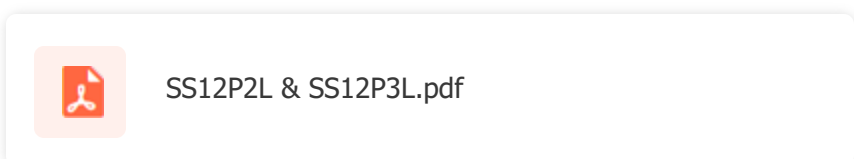
The three parts on the right have similar specifications to Vishay General Semiconductor - Diodes Division SS12P2L-M3/86A

Product Attribute				
Part Number	SS12P2L-M3/86A	SS12P4S-M3/86A	SS12P3LHM3/86A	SS12P3L-M3/86A
Manufacturer	Vishay General Semiconductor - Diodes Division	Vishay General Semiconductor - Diodes Division	Vishay General Semiconductor - Diodes Division	Vishay General Semiconductor - Diodes Division
Voltage - DC Reverse (Vr) (Max)	20 V	30 V	30 V	30 V
Current - Reverse Leakage @ Vr	1 mA @ 20 V	800 µA @ 40 V	1 mA @ 30 V	1 mA @ 30 V
Capacitance @ Vr, F	930pF @ 4V, 1MHz	750pF @ 4V, 1MHz	930pF @ 4V, 1MHz	930pF @ 4V, 1MHz
Package / Case	TO-277, 3-PowerDFN	TO-277, 3-PowerDFN	TO-277, 3-PowerDFN	TO-277, 3-PowerDFN
Package	Tape & Reel (TR)	Tape & Reel (TR)	Tape & Reel (TR)	Tape & Reel (TR)
Current - Average Rectified (Io)	12A	12A	12A	12A
Mounting Type	Surface Mount	Surface Mount	Surface Mount	Surface Mount
Speed	Fast Recovery =< 500ns, > 200mA (Io)	Fast Recovery =< 500ns, > 200mA (Io)	Fast Recovery =< 500ns, > 200mA (Io)	Fast Recovery =< 500ns, > 200mA (Io)
Technology	Schottky	Schottky	Schottky	Schottky
Series	eSMP®	eSMP®	eSMP®	eSMP®
Operating Temperature - Junction	-55°C ~ 150°C	-55°C ~ 150°C	-55°C ~ 150°C	-55°C ~ 150°C
Base Product Number	SS12P2	SS12P4	SS12P3	SS12P3
Supplier Device Package	TO-277A (SMPC)	TO-277A (SMPC)	TO-277A (SMPC)	TO-277A (SMPC)
Voltage - Forward (Vf) (Max) @ If	560 mV @ 12 A	600 mV @ 12 A	560 mV @ 12 A	560 mV @ 12 A

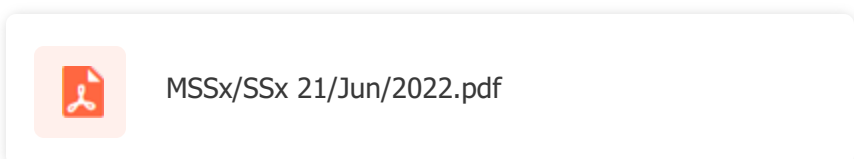
SS12P2L-M3/86A Datasheet PDF

Download SS12P2L-M3/86A pdf datasheets and Vishay General Semiconductor - Diodes Division documentation for SS12P2L-M3/86A - Vishay General Semiconductor - Diodes Division.

Datasheets



PCN Assembly/Origin



Customers Also Interested in

Recommended Products



SS12P4S-M3/86A

Vishay General Semiconductor - Diodes Division
DIODE SCHOTTKY 30V 12A TO277A



SS12P4C-M3/86A

Vishay General Semiconductor - Diodes Division
DIODE ARRAY SCHOTTKY 40V TO277A



SS12P3LHM3/86A

Vishay General Semiconductor - Diodes Division
DIODE SCHOTTKY 30V 12A TO277A



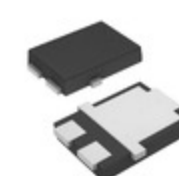
SS12P4CHM3/86A

Vishay General Semiconductor - Diodes Division
DIODE ARRAY SCHOTTKY 40V TO277A



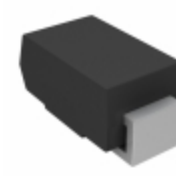
SS12LP14E-QX8E

Silicon Power



SS12P3L-M3/86A

Vishay General Semiconductor - Diodes Division
DIODE SCHOTTKY 30V 12A TO277A



SS12FP

Fairchild Semiconductor
DIODE SCHOTTKY 20V 1A SOD123HE

SS12HE3_B/H

Electro-Films (EFI) / Vishay

SS12L R3

Taiwan Semiconductor

SS12P2L

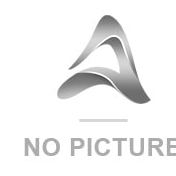
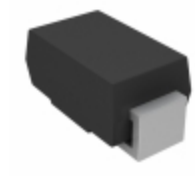
Electro-Films (EFI) / Vishay

SS12HE3/61T

Vishay General Semiconductor - Diodes Division
DIODE SCHOTTKY 20V 1A DO214AC

SS12L R3G

TSC (Taiwan Semiconductor)
DIODE SCHOTTKY 20V 1A SUB SMA



SS12P4SHM3/86A

Electro-Films (EFI) / Vishay

SS12FP

onsemi
DIODE SCHOTTKY 20V 1A SOD123HE

SS12HE3_A/H

Vishay General Semiconductor - Diodes Division
DIODE SCHOTTKY 20V 1A DO214AC

SS12P4S-M3/86

Electro-Films (EFI) / Vishay

SS12T/R

PANJIT

SS12P2LHM3/86A

Vishay General Semiconductor - Diodes Division
DIODE SCHOTTKY 20V 12A TO277A

Shipment

Delivery Time

In-stock items can be shipped within 24 hours. Some parts will be arranged for delivery within 1-2 days from the date all items arrive at our warehouse. And Allelco ships order once a day at about 17:00, except Sunday. Once the goods are shipped, the estimated delivery time depends on the shipping methods and Delivery destination. The table below shows are the logistic time for some common countries.

Delivery Cost

> Use your express account for shipment if you have one.

> Use our account for the shipment. Refer to the table below for the approximate charges.

(Different time frame / countries / package size has different price.)

Delivery Method

> Global Common Shipment by DHL / UPS / FedEx / TNT / EMS / SF we support.

> Others more shipping ways, please get in touch with your customer manager.

Common Countries Logistic Time Reference

Region	Country	Logistic Time(Day)
America	United States	5
	Brazil	7
Europe	Germany	5
	United Kingdom	4
	Italy	5
Oceania	Australia	6
	New Zealand	7
Asia	India	6
	Japan	7
Middle East	Israel	6

DHL & FedEx Shipment Charges Reference

Shipment charges(KG)	Reference DHL(USD\$)
0.00kg-1.00kg	USD\$60.00
1.00kg-2.00kg	USD\$70.00
2.00kg-3.00kg	USD\$80.00

Note: The above table is for reference only. There may have some data bias for the uncontrollable factors.

Contact us if you have any questions.

Payment Support

The payment method can be chosen from the methods shown below:

Wire Transfer (T/T, Bank Transfer), Western Union, Credit card, PayPal.



Your Faithful Supply Chain Partner -



Efficient Supply Management



Cost-Saving Procurement



Fast Sourcing & Delivery

Contact us if you have any questions.



Phone

+00852 9146 4856



Email

info@allelco.com

Certifications & Memberships



View More



Contact us

Address: Flat/Rm C 13/F Harvard Commercial Building 105-111 Thomson Road, Wan Chai, Hong Kong

Phone: +00852 9146 4856

Fax: +00852 3010 8510

Email: info@Allelco.com

Copyright © 2012-2023 AllelcoElec.com. All rights reserved.