

Image may be representation.  
See specifications for product details.



## EP20K160EFC484-3N

Manufacturer Part Number **EP20K160EFC484-3N**

Manufacturer **Intel**

Allelco Part Number **32D-EP20K160EFC484-3N**

ECAD Model [Request Free CAD Models](#)

Parts Description **IC FPGA 316 I/O 484FBGA**

Package **484-BBGA**

Data sheet [APEX 20K Family Datasheet.pdf](#)

[Virtual JTAG Megafuntion Guide.pdf](#)

[Get a Quote](#)

EP20K160EFC484-3N - Intel.New Original in Stock. Download Linear Technology EP20K160EFC484-3N datasheet/specifications on AllelcoElec.com.  
Request a quote for EP20K160EFC484-3N, please send us email: [info@allelco.com](mailto:info@allelco.com)

### Specifications

EP20K160EFC484-3N Tech Specifications

EP20K160EFC484-3N - Intel technical specifications, attributes, parameters

Product Attribute	Attribute Value	Product Attribute	Attribute Value
Manufacturer	Intel	Operating Temperature	0°C ~ 85°C (TJ)
Voltage - Supply	1.71V ~ 1.89V	Number of Logic Elements/Cells	6400
Total RAM Bits	81920	Number of LABs/CLBs	640
Supplier Device Package	484-FBGA (23x23)	Number of I/O	316
Series	APEX-20KE®	Number of Gates	404000
Package / Case	484-BBGA	Mounting Type	Surface Mount
Package	Tray	Base Product Number	EP20K160

### Parts with Similar Specifications

The three parts on the right have similar specifications to Intel EP20K160EFC484-3N

Product Attribute				
Part Number	EP20K160EFC484-3N	EP20K160EFC484-2N	EP20K160EFC484-2X	EP20K160ETC144-2X
Manufacturer	Intel	Intel	Altera	Altera
Number of I/O	316	316	316	88
Number of Logic Elements/Cells	6400	6400	-	-
Total RAM Bits	81920	81920	-	-
Number of LABs/CLBs	640	640	640	640
Mounting Type	Surface Mount	Surface Mount	Surface Mount	Surface Mount
Package / Case	484-BBGA	484-BBGA	484-BBGA	144-LQFP
Base Product Number	EP20K160	EP20K160	EP20K160	EP20K160
Series	APEX-20KE®	APEX-20KE®	APEX-20KE®	APEX-20KE®
Number of Gates	404000	404000	-	-
Voltage - Supply	1.71V ~ 1.89V	1.71V ~ 1.89V	1.71V ~ 1.89V	1.71V ~ 1.89V
Package	Tray	Tray	Bulk	Bulk
Supplier Device Package	484-FBGA (23x23)	484-FBGA (23x23)	484-FBGA (23x23)	144-TQFP (20x20)
Operating Temperature	0°C ~ 85°C (TJ)	0°C ~ 85°C (TJ)	0°C ~ 85°C (TJ)	0°C ~ 85°C (TJ)

### EP20K160EFC484-3N Datasheet PDF

Download EP20K160EFC484-3N pdf datasheets and Intel documentation for EP20K160EFC484-3N - Intel.

#### Datasheets

[APEX 20K Family Datasheet.pdf](#)

[Virtual JTAG Megafuntion Guide.pdf](#)

#### PCN Packaging

[All Dev Pkg Chg 1/Aug/2018.pdf](#)

[Mult Dev Dessicant Chg 19/Jul/2019.pdf](#)

#### PCN Obsolescence/ EOL

[EOL 01/Dec/2016.pdf](#)

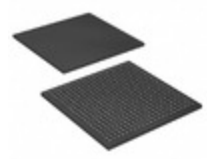
[EOL 21/Nov/2016.pdf](#)

#### PCN Design/Specification

[Mult Series Software Chgs 26/Mar/2020.pdf](#)

### Customers Also Interested in

#### Recommended Products



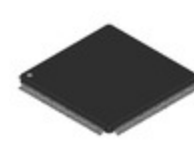
**EP20K160EFC484-2N**  
Intel  
IC FPGA 316 I/O 484FBGA



**EP20K160EFC484-2X**  
Altera  
IC FPGA 316 I/O 484FBGA



**EP20K160EBC356-2N**  
Altera (Intel)



**EP20K160ETC144-2X**  
Altera  
IC FPGA 88 I/O 144TQFP



**EP20K160EBC356-3**  
Intel  
IC FPGA 271 I/O 356BGA



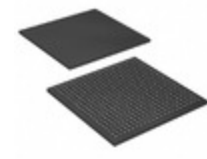
**EP20K160EQC240-1**  
Intel  
IC FPGA 175 I/O 240QFP



**EP20K160EQC240-3N**  
Intel  
IC FPGA 175 I/O 240QFP



**EP20K160ETC144-1**  
Intel  
IC FPGA 88 I/O 144TQFP



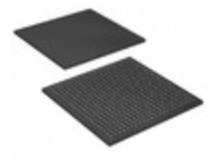
**EP20K160EFI484-2X**  
Intel  
IC FPGA 316 I/O 484FBGA



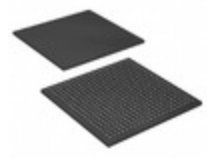
**EP20K160EQC208-1**  
Intel  
IC FPGA 143 I/O 208QFP



**EP20K160EQC240-3**  
Intel  
IC FPGA 175 I/O 240QFP



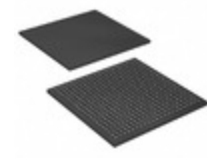
**EP20K160EFC484-2X**  
Intel  
IC FPGA 316 I/O 484FBGA



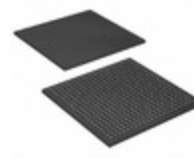
**EP20K160EFC484-1X**  
Intel  
IC FPGA 316 I/O 484FBGA



**EP20K160EQC208-3N**  
Intel  
IC FPGA 143 I/O 208QFP



**EP20K160EFC484-2**  
Intel  
IC FPGA 316 I/O 484FBGA



**EP20K160EFC484-3**  
Intel  
IC FPGA 316 I/O 484FBGA



**EP20K160EQC240-1X**  
Intel  
IC FPGA 175 I/O 240QFP



**EP20K160EQC240-2**  
Intel  
IC FPGA 175 I/O 240QFP

## Shipment

### Delivery Time

In-stock items can be shipped within 24 hours. Some parts will be arranged for delivery within 1-2 days from the date all items arrive at our warehouse. And Allelco ships order once a day at about 17:00, except Sunday. Once the goods are shipped, the estimated delivery time depends on the shipping methods and Delivery destination. The table below shows are the logistic time for some common countries.

### Delivery Cost

> Use your express account for shipment if you have one.

> Use our account for the shipment. Refer to the table below for the approximate charges.

(Different time frame / countries / package size has different price.)

### Delivery Method

> Global Common Shipment by DHL / UPS / FedEx / TNT / EMS / SF we support.

> Others more shipping ways, please get in touch with your customer manager.

Common Countries Logistic Time Reference		
Region	Country	Logistic Time(Day)
America	United States	5
	Brazil	7
Europe	Germany	5
	United Kingdom	4
	Italy	5
Oceania	Australia	6
	New Zealand	7
Asia	India	6
	Japan	7
Middle East	Israel	6

DHL & FedEx Shipment Charges Reference	
Shipment charges(KG)	Reference DHL(USD\$)
0.00kg-1.00kg	USD\$60.00
1.00kg-2.00kg	USD\$70.00
2.00kg-3.00kg	USD\$80.00

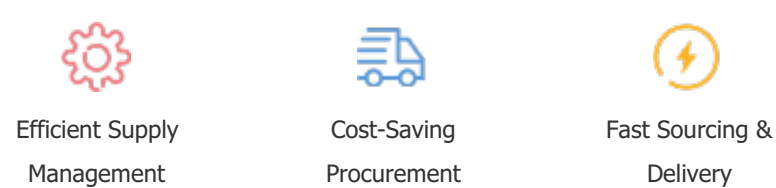
Note: The above table is for reference only. There may have some data bias for the uncontrollable factors.  
Contact us if you have any questions.

## Payment Support

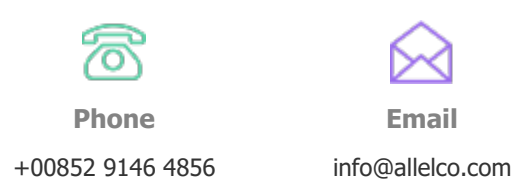
The payment method can be chosen from the methods shown below:  
Wire Transfer (T/T, Bank Transfer), Western Union, Credit card, PayPal.



## Your Faithful Supply Chain Partner -



Contact us if you have any questions.



## Certifications & Memberships



[View More](#)