

Image may be representation.  
See specifications for product details.



## EP2S30F484C5

Manufacturer Part Number	<b>EP2S30F484C5</b>
Manufacturer	<b>Intel</b>
Allelco Part Number	32D-EP2S30F484C5
ECAD Model	Request Free CAD Models
Parts Description	IC FPGA 342 I/O 484FBGA
Package	484-BBGA
Data sheet	<a href="#">Virtual JTAG Megafuntion Guide.pdf</a> <a href="#">Stratix II Device Handbook.pdf</a>

**Get a Quote**

EP2S30F484C5 - Intel.New Original in Stock. Download Linear Technology EP2S30F484C5 datasheet/specifications on AllelcoElec.com.  
Request a quote for EP2S30F484C5, please send us email: [info@allelco.com](mailto:info@allelco.com)

### Specifications

EP2S30F484C5 Tech Specifications

EP2S30F484C5 - Intel technical specifications, attributes, parameters

Product Attribute	Attribute Value	Product Attribute	Attribute Value
Manufacturer	Intel	Operating Temperature	0°C ~ 85°C (TJ)
Voltage - Supply	1.15V ~ 1.25V	Number of Logic Elements/Cells	33880
Total RAM Bits	1369728	Number of LABs/CLBs	1694
Supplier Device Package	484-FBGA (23x23)	Number of I/O	342
Series	Stratix® II	Mounting Type	Surface Mount
Package / Case	484-BBGA	Base Product Number	EP2S30
Package	Tray		

### Parts with Similar Specifications

The three parts on the right have similar specifications to Intel EP2S30F484C5

Product Attribute				
Part Number	EP2S30F484C5	<a href="#">EP2S180F1508C5N</a>	<a href="#">EP2S30F672C3</a>	<a href="#">EP2S30F48414N</a>
Manufacturer	Intel	Intel	Intel	Intel
Operating Temperature	0°C ~ 85°C (TJ)	0°C ~ 85°C (TJ)	0°C ~ 85°C (TJ)	-40°C ~ 100°C (TJ)
Voltage - Supply	1.15V ~ 1.25V	1.15V ~ 1.25V	1.15V ~ 1.25V	1.15V ~ 1.25V
Base Product Number	EP2S30	EP2S180	EP2S30	EP2S30
Number of LABs/CLBs	1694	8970	1694	1694
Series	Stratix® II	Stratix® II	Stratix® II	Stratix® II
Total RAM Bits	1369728	9383040	1369728	1369728
Mounting Type	Surface Mount	Surface Mount	Surface Mount	Surface Mount
Number of I/O	342	1170	500	342
Package	Tray	Tray	Tray	Tray
Number of Logic Elements/Cells	33880	179400	33880	33880
Package / Case	484-BBGA	1508-BBGA, FCBGA	672-BBGA	484-BBGA
Supplier Device Package	484-FBGA (23x23)	1508-FBGA, FC (40x40)	672-FBGA (27x27)	484-FBGA (23x23)

### EP2S30F484C5 Datasheet PDF

Download EP2S30F484C5 pdf datasheets and Intel documentation for EP2S30F484C5 - Intel.

#### Datasheets

[Virtual JTAG Megafuntion Guide.pdf](#)

[Stratix II Device Handbook.pdf](#)

#### PCN Design/Specification

[Cylindrical Battery Holders.pdf](#)

#### PCN Packaging

[Mult Dev Label CHG 24/Jan/2020.pdf](#)

[Mult Dev Label Chgs 24/Feb/2020.pdf](#)

#### PCN Obsolescence/ EOL

[Mult Dev EOL 4/Dec/2020.pdf](#)

[Mult Dev Retraction 12/Feb/2021.pdf](#)

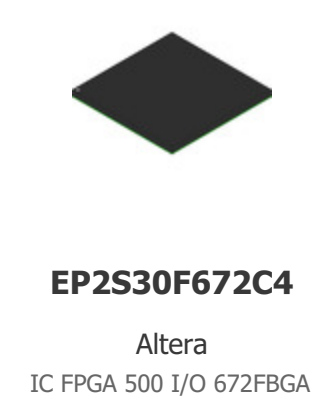
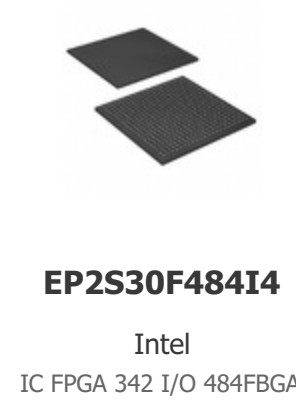
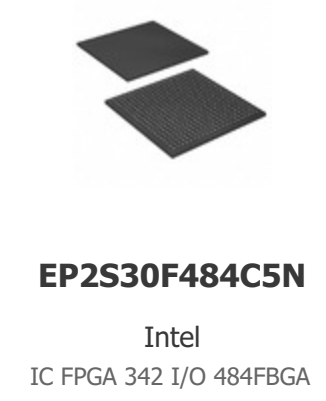
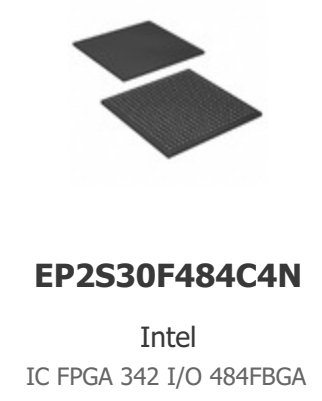
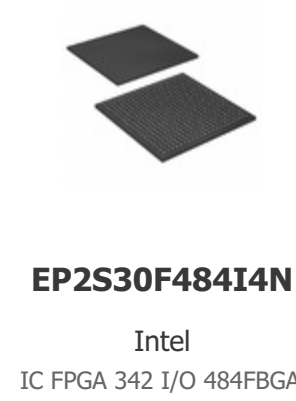
#### PCN Part Status Change

[Mult Dev Status Rev 4/Dec/2020.pdf](#)

[Mult Dev Status Updates 29/May/2020.pdf](#)

### Customers Also Interested in

#### Recommended Products



## Shipment

### Delivery Time

In-stock items can be shipped within 24 hours. Some parts will be arranged for delivery within 1-2 days from the date all items arrive at our warehouse. And Allelco ships order once a day at about 17:00, except Sunday. Once the goods are shipped, the estimated delivery time depends on the shipping methods and Delivery destination. The table below shows are the logistic time for some common countries.

### Delivery Cost

> Use your express account for shipment if you have one.

> Use our account for the shipment. Refer to the table below for the approximate charges.

(Different time frame / countries / package size has different price.)

### Delivery Method

> Global Common Shipment by DHL / UPS / FedEx / TNT / EMS / SF we support.

> Others more shipping ways, please get in touch with your customer manager.

Common Countries Logistic Time Reference		
Region	Country	Logistic Time(Day)
America	United States	5
	Brazil	7
Europe	Germany	5
	United Kingdom	4
	Italy	5
Oceania	Australia	6
	New Zealand	7
Asia	India	6
	Japan	7
Middle East	Israel	6

DHL & FedEx Shipment Charges Reference	
Shipment charges(KG)	Reference DHL(USD\$)
0.00kg-1.00kg	USD\$60.00
1.00kg-2.00kg	USD\$70.00
2.00kg-3.00kg	USD\$80.00

Note: The above table is for reference only. There may have some data bias for the uncontrollable factors.

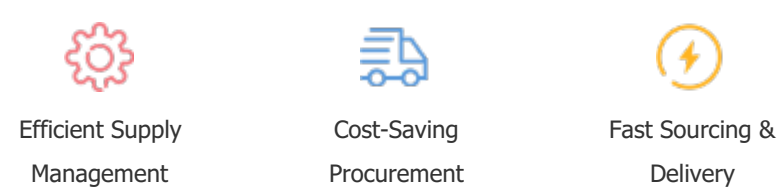
Contact us if you have any questions.

## Payment Support

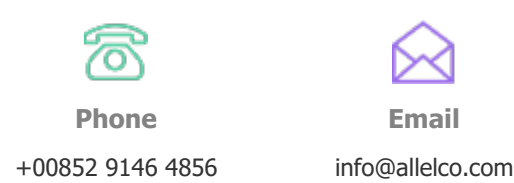
The payment method can be chosen from the methods shown below:  
Wire Transfer (T/T, Bank Transfer), Western Union, Credit card,  
PayPal.



## Your Faithful Supply Chain Partner -



Contact us if you have any questions.



## Certifications & Memberships



View More