

Image may be representation.  
See specifications for product details.



## BALF-SPI2-02D3

Manufacturer Part Number	<b>BALF-SPI2-02D3</b>
Manufacturer	<b>STMicroelectronics</b>
Allelco Part Number	32D-BALF-SPI2-02D3
ECAD Model	PCB Symbol, Footprint & 3D Mode
Parts Description	BALUN 433MHZ 6WFBGA FCBGA
Package	6-WFBGA, FCBGA
Data sheet	<b>BALF-SPI2-02D3.pdf</b>
RoHs Status	<b>ROHS3 Compliant</b>

**Get a Quote**

BALF-SPI2-02D3 - STMicroelectronics.New Original in Stock. Download Linear Technology BALF-SPI2-02D3 datasheet/specifications on AllelcoElec.com.  
Request a quote for BALF-SPI2-02D3, please send us email: [info@allelco.com](mailto:info@allelco.com)

### Specifications

BALF-SPI2-02D3 Tech Specifications  
BALF-SPI2-02D3 - STMicroelectronics technical specifications, attributes, parameters

Product Attribute	Attribute Value	Product Attribute	Attribute Value
Manufacturer	STMicroelectronics	Mounting Type	Surface Mount
Series	-	Insertion Loss (Max)	3.6dB
Return Loss (Min)	6.5dB	Impedance - Unbalanced/Balanced	50 / -Ohm
Phase Difference	2.1°	Frequency Range	433MHz
Package / Case	6-WFBGA, FCBGA	Base Product Number	BALF
Package	Tape & Reel (TR)		

### Parts with Similar Specifications

The three parts on the right have similar specifications to STMicroelectronics BALF-SPI2-02D3

Product Attribute				
Part Number	BALF-SPI2-02D3	<b>BALF-NRF01E3</b>	<b>BALF-NRG-02D3</b>	<b>BALF-NRG-01D3</b>
Manufacturer	STMicroelectronics	STMicroelectronics	STMicroelectronics	STMicroelectronics
Base Product Number	BALF	BALF	BALF	BALF
Return Loss (Min)	6.5dB	15dB	19dB	-20dBm
Frequency Range	433MHz	2.4GHz ~ 2.54GHz	2.4GHz ~ 2.5GHz	2.4GHz ~ 2.5GHz
Series	-	-	-	-
Insertion Loss (Max)	3.6dB	2.2dB	1.3dB	1.1dB
Impedance - Unbalanced/Balanced	50 / -Ohm	50 / -Ohm	50 / 50Ohm	50 / 50Ohm
Package / Case	6-WFBGA, FCBGA	6-XFLGA	4-UFBGA, CSPBGA	4-WFBGA, FCBGA
Mounting Type	Surface Mount	Surface Mount	Surface Mount	Surface Mount
Package	Tape & Reel (TR)	Tape & Reel (TR)	Tape & Reel (TR)	Tape & Reel (TR)
Phase Difference	2.1°	4°	3°	7°

### BALF-SPI2-02D3 Datasheet PDF

Download BALF-SPI2-02D3 pdf datasheets and STMicroelectronics documentation for BALF-SPI2-02D3 - STMicroelectronics.

#### Datasheets

[BALF-SPI2-02D3.pdf](#)

#### PCN Packaging

[Label 17/Jan/2019.pdf](#)

#### PCN Assembly/Origin

[Mult Devices 27/Feb/2019.pdf](#)

### Customers Also Interested in

#### Recommended Products



**BAL99LT1G**  
onsemi  
DIODE GEN PURP 70V 100MA  
SOT23-3



NO PICTURE

**BALH-0006SMG**  
Marki



NO PICTURE

**BALH-0006**  
Marki



**BAL99E6327**  
Infineon Technologies  
DIODE GEN PURP 80V 250MA SOT23

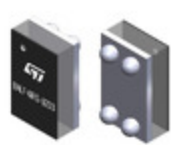


NO PICTURE

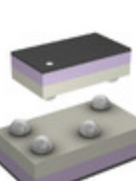
**BAL99LT1G**  
Motorola  
RECTIFIER DIODE, 0.1A, 70V, TO-2



**BALF-NRF01E3**  
STMicroelectronics  
BALUN 2.4GHZ-2.54GHZ 6XFLGA



NO PICTURE



**BAL99NEO**

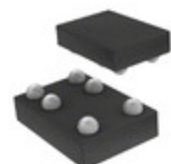
Diodes Incorporated



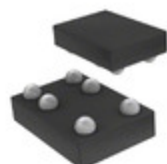
NO PICTURE

**BAL99TAPBF**

ZETEX

**BALF-NRG-02D3**STMicroelectronics  
BALUN 2.4GHZ-2.5GHZ 50/50  
4UFBGA**BALF-SPI2-01D3**STMicroelectronics  
BALUN 868MHZ-928MHZ 50/50  
6UFBGA**BAL99W**

PANJIT

**BALF-SPI-01D3**STMicroelectronics  
BALUN 779MHZ-956MHZ 6UFBGA  
FCBGA**BALF-NRG-01D3**STMicroelectronics  
BALUN 2.4GHZ-2.5GHZ 50/50  
4WFBGA**BALF-NRF01D3**STMicroelectronics  
BALUN 2.4GHZ-2.5GHZ 50/50  
5UFBGA**BALF-2690-02D3**STMicroelectronics  
BALUN 2.4GHZ-2.5GHZ 4UFBGA  
FCBGA**BAL99LT1**onsemi  
DIODE SWITCH 100MA 70V SOT23**BAL99/B**

Freescale / NXP Semiconductors

**BAL99-V-GS08**

Electro-Films (EFI) / Vishay

**Shipment****Delivery Time**

In-stock items can be shipped within 24 hours. Some parts will be arranged for delivery within 1-2 days from the date all items arrive at our warehouse. And Allelco ships order once a day at about 17:00, except Sunday. Once the goods are shipped, the estimated delivery time depends on the shipping methods and Delivery destination. The table below shows are the logistic time for some common countries.

**Delivery Cost**

> Use your express account for shipment if you have one.

> Use our account for the shipment. Refer to the table below for the approximate charges.

(Different time frame / countries / package size has different price.)

**Delivery Method**

> Global Common Shipment by DHL / UPS / FedEx / TNT / EMS / SF we support.

> Others more shipping ways, please get in touch with your customer manager.

Common Countries Logistic Time Reference		
Region	Country	Logistic Time(Day)
America	United States	5
	Brazil	7
Europe	Germany	5
	United Kingdom	4
	Italy	5
Oceania	Australia	6
	New Zealand	7
Asia	India	6
	Japan	7
Middle East	Israel	6

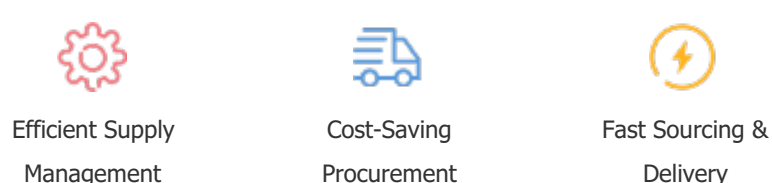
DHL & FedEx Shipment Charges Reference	
Shipment charges(KG)	Reference DHL(USD\$)
0.00kg-1.00kg	USD\$60.00
1.00kg-2.00kg	USD\$70.00
2.00kg-3.00kg	USD\$80.00

**Note:** The above table is for reference only. There may have some data bias for the uncontrollable factors.  
Contact us if you have any questions.

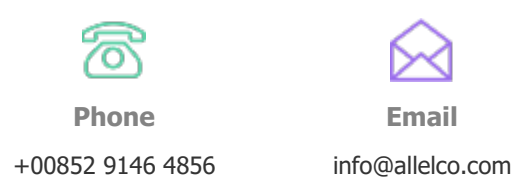
**Payment Support**

The payment method can be chosen from the methods shown below:

Wire Transfer (T/T, Bank Transfer), Western Union, Credit card, PayPal.

**Your Faithful Supply Chain Partner -**

**Contact us if you have any questions.**

**Certifications & Memberships**

[View More](#)

**Contact us**

Address: Flat/Rm C 13/F Harvard Commercial Building 105-111 Thomson Road, Wan Chai, Hong Kong

Phone: +00852 9146 4856

Fax: +00852 3010 8510

Email: info@Allelco.com

Copyright © 2012-2023 AllelcoElec.com. All rights reserved.