

Image may be representation.
See specifications for product details.



EP3C10U256C8

Manufacturer Part Number	EP3C10U256C8
Manufacturer	Intel
Allelco Part Number	32D-EP3C10U256C8
ECAD Model	Request Free CAD Models
Parts Description	IC FPGA 182 I/O 256UBGA
Package	256-LFBGA
Data sheet	Virtual JTAG Megafuntion Guide.pdf Cyclone III Family Overview.pdf Cyclone III Device Handbook Vol1.pdf Cyclone III Datasheet.pdf

Get a Quote

EP3C10U256C8 - Intel.New Original in Stock. Download Linear Technology EP3C10U256C8 datasheet/specifications on AllelcoElec.com.
Request a quote for EP3C10U256C8, please send us email: info@allelco.com

Specifications

EP3C10U256C8 Tech Specifications

EP3C10U256C8 - Intel technical specifications, attributes, parameters

Product Attribute	Attribute Value	Product Attribute	Attribute Value
Manufacturer	Intel	Operating Temperature	0°C ~ 85°C (TJ)
Voltage - Supply	1.15V ~ 1.25V	Number of Logic Elements/Cells	10320
Total RAM Bits	423936	Number of LABs/CLBs	645
Supplier Device Package	256-UBGA (14x14)	Number of I/O	182
Series	Cyclone® III	Mounting Type	Surface Mount
Package / Case	256-LFBGA	Base Product Number	EP3C10
Package	Tray		

Parts with Similar Specifications

The three parts on the right have similar specifications to Intel EP3C10U256C8

Product Attribute				
Part Number	EP3C10U256C8	EP3C10U256I7N	EP3C120F484I7N	EP3C10F256I7N
Manufacturer	Intel	Intel	Intel	Intel
Package	Tray	Tray	Tray	Tray
Package / Case	256-LFBGA	256-LFBGA	484-BGA	256-LBGA
Total RAM Bits	423936	423936	3981312	423936
Number of Logic Elements/Cells	10320	10320	119088	10320
Operating Temperature	0°C ~ 85°C (TJ)	-40°C ~ 100°C (TJ)	-40°C ~ 100°C (TJ)	-40°C ~ 100°C (TJ)
Number of LABs/CLBs	645	645	7443	645
Series	Cyclone® III	Cyclone® III	Cyclone® III	Cyclone® III
Voltage - Supply	1.15V ~ 1.25V	1.15V ~ 1.25V	1.15V ~ 1.25V	1.15V ~ 1.25V
Supplier Device Package	256-UBGA (14x14)	256-UBGA (14x14)	484-FBGA (23x23)	256-FBGA (17x17)
Mounting Type	Surface Mount	Surface Mount	Surface Mount	Surface Mount
Number of I/O	182	182	283	182
Base Product Number	EP3C10	EP3C10	EP3C120	EP3C10

EP3C10U256C8 Datasheet PDF

Download EP3C10U256C8 pdf datasheets and Intel documentation for EP3C10U256C8 - Intel.

Datasheets

Virtual JTAG Megafuntion Guide.pdf

Cyclone III Family Overview.pdf

Cyclone III Datasheet.pdf

PCN Design/Specification

Mult Series Software Chgs 26/Mar/2020.pdf

Cyclone Material Chgs 15/Jul/2016.pdf

PCN Packaging

Mult Dev Label CHG 24/Jan/2020.pdf

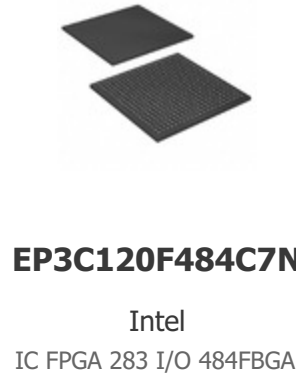
Mult Dev Label Chgs 24/Feb/2020.pdf

HTML Datasheet

Cyclone III Device Handbook Vol1.pdf

Customers Also Interested in

Recommended Products



Shipment

Delivery Time

In-stock items can be shipped within 24 hours. Some parts will be arranged for delivery within 1-2 days from the date all items arrive at our warehouse. And Allelco ships order once a day at about 17:00, except Sunday. Once the goods are shipped, the estimated delivery time depends on the shipping methods and Delivery destination. The table below shows are the logistic time for some common countries.

Delivery Cost

> Use your express account for shipment if you have one.

> Use our account for the shipment. Refer to the table below for the approximate charges.

(Different time frame / countries / package size has different price.)

Delivery Method

> Global Common Shipment by DHL / UPS / FedEx / TNT / EMS / SF we support.

> Others more shipping ways, please get in touch with your customer manager.

Common Countries Logistic Time Reference		
Region	Country	Logistic Time(Day)
America	United States	5
	Brazil	7
Europe	Germany	5
	United Kingdom	4
	Italy	5
Oceania	Australia	6
	New Zealand	7
Asia	India	6
	Japan	7
Middle East	Israel	6

DHL & FedEx Shipment Charges Reference	
Shipment charges(KG)	Reference DHL(USD\$)
0.00kg-1.00kg	USD\$60.00
1.00kg-2.00kg	USD\$70.00
2.00kg-3.00kg	USD\$80.00

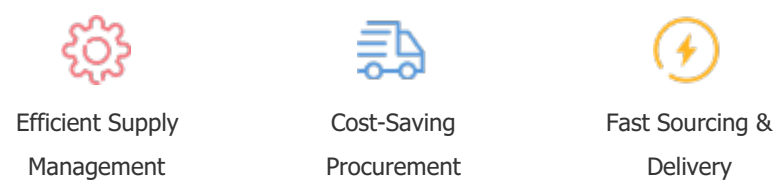
Note: The above table is for reference only. There may have some data bias for the uncontrollable factors.
Contact us if you have any questions.

Payment Support

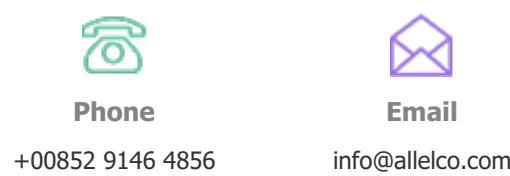
The payment method can be chosen from the methods shown below:
Wire Transfer (T/T, Bank Transfer), Western Union, Credit card, PayPal.



Your Faithful Supply Chain Partner -



Contact us if you have any questions.



Certifications & Memberships



[View More](#)