

Image may be representation.
See specifications for product details.



MAX815TESA

Manufacturer Part Number	MAX815TESA
Manufacturer	Maxim Integrated
Allelco Part Number	32D-MAX815TESA
ECAD Model	Request Free CAD Models
Parts Description	IC SUPERVISOR 1 CHANNEL 8SOIC
Package	8-SOIC (0.154", 3.90mm Width)
Data sheet	MAX815TESA.pdf

Get a Quote

MAX815TESA - Analog Devices Inc./Maxim Integrated. New Original in Stock. Download Linear Technology MAX815TESA datasheet/specifications on AllelcoElec.com. Request a quote for MAX815TESA, please send us email: info@allelco.com

Specifications

MAX815TESA Tech Specifications
MAX815TESA - Analog Devices Inc./Maxim Integrated technical specifications, attributes, parameters

Product Attribute	Attribute Value	Product Attribute	Attribute Value
Manufacturer	Maxim Integrated	Package / Case	8-SOIC (0.154", 3.90mm Width)
Voltage - Threshold	3.03V	Package	Bulk
Type	Simple Reset/Power-On Reset	Output	Push-Pull, Totem Pole
Supplier Device Package	8-SOIC	Operating Temperature	-40°C ~ 85°C
Series	-	Number of Voltages Monitored	1
Reset Timeout	140ms Minimum	Mounting Type	Surface Mount
Reset	Active Low	Base Product Number	MAX815

Parts with Similar Specifications

The three parts on the right have similar specifications to Analog Devices Inc./Maxim Integrated MAX815TESA

Product Attribute				
Part Number	MAX815TESA	MAX815LCPA+	MAX816ESA+T	MAX817LCSA+
Manufacturer	Analog Devices Inc./Maxim Integrated	Analog Devices Inc./Maxim Integrated	Analog Devices Inc./Maxim Integrated	Analog Devices Inc./Maxim Integrated
Operating Temperature	-40°C ~ 85°C	0°C ~ 70°C (TA)	-40°C ~ 85°C (TA)	0°C ~ 70°C (TA)
Voltage - Threshold	3.03V	4.7V	Adjustable/Selectable	4.65V
Package	Bulk	Tube	Tape & Reel (TR)	Tube
Reset	Active Low	Active Low	Active High/Active Low	Active Low
Reset Timeout	140ms Minimum	140ms Minimum	140ms Minimum	140ms Minimum
Base Product Number	MAX815	MAX815	MAX816	MAX817
Series	-	-	-	-
Package / Case	8-SOIC (0.154", 3.90mm Width)	8-DIP (0.300", 7.62mm)	8-SOIC (0.154", 3.90mm Width)	8-SOIC (0.154", 3.90mm Width)
Mounting Type	Surface Mount	Through Hole	Surface Mount	Surface Mount
Number of Voltages Monitored	1	1	1	1
Output	Push-Pull, Totem Pole	Push-Pull, Totem Pole	Push-Pull, Push-Pull	-
Supplier Device Package	8-SOIC	8-PDIP	8-SOIC	8-SOIC
Type	Simple Reset/Power-On Reset	Simple Reset/Power-On Reset	Simple Reset/Power-On Reset	Battery Backup Circuit

Customers Also Interested in

Recommended Products

MAX815LCPA+ Analog Devices Inc./Maxim Integrated IC SUPERVISOR MPU LP 8-DIP	MAX816ESA+T Analog Devices Inc./Maxim Integrated IC SUPERVISOR 1 CHANNEL 8SOIC	MAX817LCSA+ Analog Devices Inc./Maxim Integrated IC SUPERVISOR 1 CHANNEL 8SOIC	MAX816CSA+ Analog Devices Inc./Maxim Integrated IC SUPERVISOR 1 CHANNEL 8SOIC	MAX814TCSA+T Analog Devices Inc./Maxim Integrated IC SUPERVISOR 1 CHANNEL 8SOIC	MAX815TESA+T Analog Devices Inc./Maxim Integrated IC SUPERVISOR 1 CHANNEL 8SOIC
MAX815TCSA+ Analog Devices Inc./Maxim Integrated IC SUPERVISOR 1 CHANNEL 8SOIC	MAX815KEPA Analog Devices / Maxim Integrated	MAX816CSA+T Analog Devices Inc./Maxim Integrated IC SUPERVISOR 1 CHANNEL 8SOIC	MAX815TCSA Analog Devices Inc./Maxim Integrated IC SUPERVISOR 1 CHANNEL 8SOIC	MAX815LESA Analog Devices Inc./Maxim Integrated IC SUPERVISOR 1 CHANNEL 8SOIC	MAX816EPA+ Analog Devices Inc./Maxim Integrated IC SUPERVISOR 1 CHANNEL 8DIP
MAX814TESA+ Analog Devices Inc./Maxim Integrated IC SUPERVISOR 1 CHANNEL 8SOIC	MAX815LCSA Analog Devices Inc./Maxim Integrated IC SUPERVISOR MPU	MAX815LCSA+T Analog Devices Inc./Maxim Integrated IC SUPERVISOR 1 CHANNEL 8SOIC	MAX814TEPA Analog Devices / Maxim Integrated	MAX816CSA Analog Devices Inc./Maxim Integrated IC SUPERVISOR 1 CHANNEL 8SOIC	MAX815TESA+ Analog Devices Inc./Maxim Integrated IC SUPERVISOR 1 CHANNEL 8SOIC

Shipment

Delivery Time

In-stock items can be shipped within 24 hours. Some parts will be arranged for delivery within 1-2 days from the date all items arrive at our warehouse. And Allelco ships order once a day at about 17:00, except Sunday. Once the goods are shipped, the estimated delivery time depends on the shipping methods and Delivery destination. The table below shows are the logistic time for some common countries.

Delivery Cost

> Use your express account for shipment if you have one.

> Use our account for the shipment. Refer to the table below for the approximate charges.

(Different time frame / countries / package size has different price.)

Delivery Method

> Global Common Shipment by DHL / UPS / FedEx / TNT / EMS / SF we support.

> Others more shipping ways, please get in touch with your customer manager.

Common Countries Logistic Time Reference		
Region	Country	Logistic Time(Day)
America	United States	5
	Brazil	7
Europe	Germany	5
	United Kingdom	4
	Italy	5
Oceania	Australia	6
	New Zealand	7
Asia	India	6
	Japan	7
Middle East	Israel	6

DHL & FedEx Shipment Charges Reference	
Shipment charges(KG)	Reference DHL(USD\$)
0.00kg-1.00kg	USD\$60.00
1.00kg-2.00kg	USD\$70.00
2.00kg-3.00kg	USD\$80.00

Note: The above table is for reference only. There may have some data bias for the uncontrollable factors.

Contact us if you have any questions.

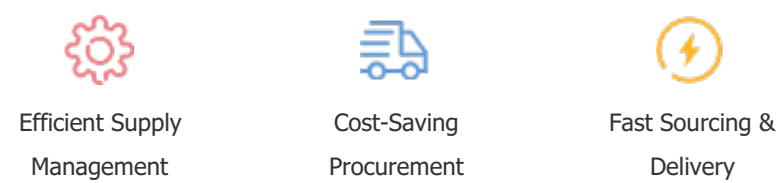
Payment Support

The payment method can be chosen from the methods shown below:

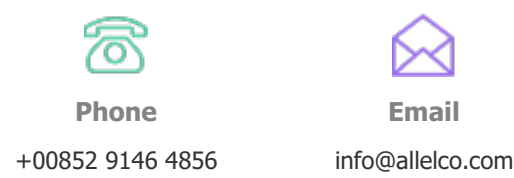
Wire Transfer (T/T, Bank Transfer), Western Union, Credit card, PayPal.



Your Faithful Supply Chain Partner -



Contact us if you have any questions.



Certifications & Memberships



[View More](#)



Contact us

Address: Flat/Rm C 13/F Harvard Commercial Building 105-111 Thomson Road, Wan Chai, Hong Kong

Phone: +00852 9146 4856

Fax: +00852 3010 8510

Email: info@Allelco.com

Copyright © 2012-2023 AllelcoElec.com. All rights reserved.