



Image may be representation.
See specifications for product details.



DS28EC20+

Manufacturer Part Number	DS28EC20+
Manufacturer	Maxim Integrated
Allelco Part Number	32D-DS28EC20+
ECAD Model	Request Free CAD Models
Parts Description	IC EEPROM 20KBIT 1-WIRE TO92-3
Package	TO-226-3, TO-92-3 (TO-226AA)
Data sheet	DS28EC20.pdf DS28EC20.pdf 21-0248 Pkg Drawing.pdf

RoHS Status **ROHS3 Compliant**

Get a Quote

DS28EC20+ - Analog Devices Inc./Maxim Integrated.New Original in Stock. Download Linear Technology DS28EC20+ datasheet/specifications on AllelcoElec.com. Request a quote for DS28EC20+, please send us email: info@allelco.com

Specifications

DS28EC20+ Tech Specifications

DS28EC20+ - Analog Devices Inc./Maxim Integrated technical specifications, attributes, parameters

Product Attribute	Attribute Value	Product Attribute	Attribute Value
Manufacturer	Maxim Integrated	Operating Temperature	-40°C ~ 85°C (TA)
Write Cycle Time - Word, Page	-	Mounting Type	Through Hole
Voltage - Supply	-	Memory Type	Non-Volatile
Technology	EEPROM	Memory Size	20Kbit
Supplier Device Package	TO-92-3	Memory Organization	256 x 80
Series	-	Memory Interface	1-Wire®
Package / Case	TO-226-3, TO-92-3 (TO-226AA)	Memory Format	EEPROM
Package	Bulk	Base Product Number	DS28EC20

Parts with Similar Specifications

The three parts on the right have similar specifications to Analog Devices Inc./Maxim Integrated DS28EC20+

Product Attribute				
Part Number	DS28EC20+	DS28EC20Q+T	DS28EC20+T	DS28E80Q+T
Manufacturer	Analog Devices Inc./Maxim Integrated	Analog Devices Inc./Maxim Integrated	Analog Devices Inc./Maxim Integrated	Analog Devices Inc./Maxim Integrated
Memory Format	EEPROM	EEPROM	EEPROM	EEPROM
Technology	EEPROM	EEPROM	EEPROM	EEPROM
Package / Case	TO-226-3, TO-92-3 (TO-226AA)	6-WDFN Exposed Pad	TO-226-3, TO-92-3 (TO-226AA) Formed Leads	6-WDFN Exposed Pad
Base Product Number	DS28EC20	DS28EC20	DS28EC20	DS28E80
Mounting Type	Through Hole	Surface Mount	Through Hole	Surface Mount
Memory Interface	1-Wire®	1-Wire®	1-Wire®	1-Wire®
Package	Bulk	Tape & Reel (TR)	Tape & Reel (TR)	Tape & Reel (TR)
Supplier Device Package	TO-92-3	6-TDFN (3x3)	TO-92-3	6-TDFN (3x3)
Voltage - Supply	-	-	-	2.97V ~ 3.63V
Series	-	-	-	-
Operating Temperature	-40°C ~ 85°C (TA)	-40°C ~ 85°C (TA)	-40°C ~ 85°C (TA)	-40°C ~ 85°C (TA)
Memory Type	Non-Volatile	Non-Volatile	Non-Volatile	Non-Volatile
Memory Size	20Kbit	20Kbit	20Kbit	2Kbit
Write Cycle Time - Word, Page	-	-	-	-
Memory Organization	256 x 80	256 x 80	256 x 80	2K x 1

DS28EC20+ Datasheet PDF

Download DS28EC20+ pdf datasheets and Analog Devices Inc./Maxim Integrated documentation for DS28EC20+ - Analog Devices Inc./Maxim Integrated.

Datasheets

[DS28EC20.pdf](#)

[21-0248 Pkg Drawing.pdf](#)

Environmental Information

[Maxim Integrated REACH.pdf](#)

[Maxim Integrated RoHS Cert.pdf](#)

[Material Declaration DS28EC20+.pdf](#)

HTML Datasheet

[DS28EC20.pdf](#)

Application Notes

[How to Build a 1-Wire® Evaluation Kit.pdf](#)

[Implementing Nonvolatile, Nonresettable Counters f.pdf](#)

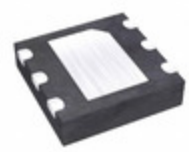
[Reference Design of a 1-Wire® Bidirectional Volta.pdf](#)



Understanding the DS1WM Synthesizable 1-Wire Bus M.pdf

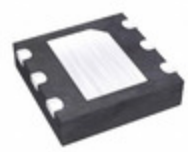
Customers Also Interested in

Recommended Products



DS28EL25Q+U

Analog Devices Inc./Maxim Integrated
IC EEPROM 4K 1WIRE 6TDFN



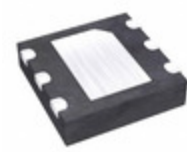
DS28EL15Q+U

Analog Devices Inc./Maxim Integrated
IC EEPROM 512 1WIRE 6TDFN



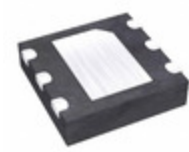
DS28EA00U

Analog Devices / Maxim Integrated



DS28EC20Q+T

Analog Devices Inc./Maxim Integrated
IC EEPROM 20KBIT 1-WIRE 6TDFN



DS28E38Q+T

Analog Devices Inc./Maxim Integrated
IC EEPROM 2K 1WIRE 6TDFN



NO PICTURE

DS28E38Q+U-ND

MAX USA CORP.



DS28EC20+T

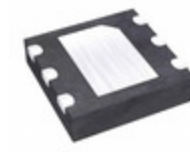
Analog Devices Inc./Maxim Integrated
IC EEPROM 20KBIT 1-WIRE TO92-3



NO PICTURE

DS28EC20

DALLAS



DS28E80Q+T

Analog Devices Inc./Maxim Integrated
IC EEPROM 2KBIT 1-WIRE 6TDFN



DS28EC20P-224-BB+T

Analog Devices / Maxim Integrated



DS28EC20P+

Analog Devices Inc./Maxim Integrated
IC EEPROM 20KBIT 1-WIRE 6TSOC



DS28E500

Analog Devices / Maxim Integrated



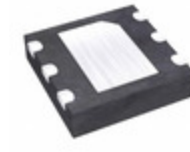
DS28EC20P+T

Analog Devices Inc./Maxim Integrated
IC EEPROM 20KBIT 1-WIRE 6TSOC



DS28EA00U+

Analog Devices Inc./Maxim Integrated
SENSOR DIGITAL -40C-85C 8UMAX



DS28EL15Q+T

Analog Devices Inc./Maxim Integrated
IC EEPROM 512 1WIRE 6TDFN



DS28EL15XA-S+T

Analog Devices Inc./Maxim Integrated
INTEGRATED CIRCUIT



DS28EL15Q-742+3TW

Analog Devices Inc./Maxim Integrated
IC EEPROM 512 1WIRE



DS28EA00U+T&R

Analog Devices Inc./Maxim Integrated
SENSOR DIGITAL -40C-85C 8UMAX

Shipment

Delivery Time

In-stock items can be shipped within 24 hours. Some parts will be arranged for delivery within 1-2 days from the date all items arrive at our warehouse. And Allelco ships order once a day at about 17:00, except Sunday. Once the goods are shipped, the estimated delivery time depends on the shipping methods and Delivery destination. The table below shows are the logistic time for some common countries.

Delivery Cost

> Use your express account for shipment if you have one.

> Use our account for the shipment. Refer to the table below for the approximate charges.

(Different time frame / countries / package size has different price.)

Delivery Method

> Global Common Shipment by DHL / UPS / FedEx / TNT / EMS / SF we support.

> Others more shipping ways, please get in touch with your customer manager.

Common Countries Logistic Time Reference

Region	Country	Logistic Time(Day)
America	United States	5
	Brazil	7
Europe	Germany	5
	United Kingdom	4
	Italy	5
Oceania	Australia	6
	New Zealand	7
Asia	India	6
	Japan	7
Middle East	Israel	6

DHL & FedEx Shipment Charges Reference

Shipment charges(KG)	Reference DHL(USD\$)
0.00kg-1.00kg	USD\$60.00
1.00kg-2.00kg	USD\$70.00
2.00kg-3.00kg	USD\$80.00

Note: The above table is for reference only. There may have some data bias for the uncontrollable factors.

Contact us if you have any questions.

Payment Support

The payment method can be chosen from the methods shown below:

Wire Transfer (T/T, Bank Transfer), Western Union, Credit card, PayPal.



Your Faithful Supply Chain Partner -



Efficient Supply Management



Cost-Saving Procurement



Fast Sourcing & Delivery

Contact us if you have any questions.



Phone

+00852 9146 4856



Email

info@allelco.com

Certifications & Memberships



View More