



Image may be representation.  
See specifications for product details.



## MC74LCX574DTR2G

Manufacturer Part Number	<b>MC74LCX574DTR2G</b>
Manufacturer	<b>onsemi</b>
Allelco Part Number	32D-MC74LCX574DTR2G
ECAD Model	Request Free CAD Models
Parts Description	IC FF D-TYPE SNGL 8BIT 20TSSOP
Package	20-TSSOP (0.173", 4.40mm Width)
Data sheet	<b>MC74LCX574.pdf</b>
RoHs Status	<b>ROHS3 Compliant</b>

**Get a Quote**

MC74LCX574DTR2G - onsemi.New Original in Stock. Download Linear Technology MC74LCX574DTR2G datasheet/specifications on AllelcoElec.com.  
Request a quote for MC74LCX574DTR2G, please send us email: [info@allelco.com](mailto:info@allelco.com)

### Specifications

MC74LCX574DTR2G Tech Specifications  
MC74LCX574DTR2G - onsemi technical specifications, attributes, parameters

Product Attribute	Attribute Value	Product Attribute	Attribute Value
Manufacturer	onsemi	Number of Elements	1
Voltage - Supply	2V ~ 3.6V	Number of Bits per Element	8
Type	D-Type	Mounting Type	Surface Mount
Trigger Type	Positive Edge	Max Propagation Delay @ V, Max CL	8.5ns @ 3.3V, 50pF
Supplier Device Package	20-TSSOP	Input Capacitance	7 pF
Series	74LCX	Function	Standard
Package / Case	20-TSSOP (0.173", 4.40mm Width)	Current - Quiescent (Iq)	10 µA
Package	Tape & Reel (TR)	Current - Output High, Low	24mA, 24mA
Output Type	Tri-State, Non-Inverted	Clock Frequency	150 MHz
Operating Temperature	-40°C ~ 85°C (TA)	Base Product Number	74LCX574

### Parts with Similar Specifications

The three parts on the right have similar specifications to onsemi MC74LCX574DTR2G

Product Attribute				
Part Number	MC74LCX574DTR2G	<b>MC74LCX574DTR2</b>	<b>MC74LCX74DR2G</b>	<b>MC74LCX74DTR2</b>
Manufacturer	onsemi	Motorola	onsemi	onsemi
Voltage - Supply	2V ~ 3.6V	2V ~ 3.6V	2V ~ 3.6V	2V ~ 3.6V
Max Propagation Delay @ V, Max CL	8.5ns @ 3.3V, 50pF	8.5ns @ 3.3V, 50pF	7ns @ 3.3V, 50pF	7ns @ 3.3V, 50pF
Input Capacitance	7 pF	7 pF	7 pF	7 pF
Trigger Type	Positive Edge	Positive Edge	Positive Edge	Positive Edge
Function	Standard	Standard	Set(Preset) and Reset	Set(Preset) and Reset
Current - Output High, Low	24mA, 24mA	24mA, 24mA	24mA, 24mA	24mA, 24mA
Package / Case	20-TSSOP (0.173", 4.40mm Width)	20-TSSOP (0.173", 4.40mm Width)	14-SOIC (0.154", 3.90mm Width)	14-TSSOP (0.173", 4.40mm Width)
Package	Tape & Reel (TR)	Bulk	Tape & Reel (TR)	Tape & Reel (TR)
Number of Bits per Element	8	8	1	1
Operating Temperature	-40°C ~ 85°C (TA)	-55°C ~ 125°C (TA)	-40°C ~ 85°C (TA)	-40°C ~ 85°C (TA)
Supplier Device Package	20-TSSOP	20-TSSOP	14-SOIC	14-TSSOP
Current - Quiescent (Iq)	10 µA	10 µA	10 µA	10 µA
Series	74LCX	-	74LCX	74LCX
Type	D-Type	D-Type	D-Type	D-Type
Output Type	Tri-State, Non-Inverted	Tri-State, Non-Inverted	Complementary	Complementary
Mounting Type	Surface Mount	Surface Mount	Surface Mount	Surface Mount
Base Product Number	74LCX574	74LCX574	74LCX74	74LCX74
Clock Frequency	150 MHz	150 MHz	150 MHz	150 MHz
Number of Elements	1	1	2	2

### MC74LCX574DTR2G Datasheet PDF

Download MC74LCX574DTR2G pdf datasheets and onsemi documentation for MC74LCX574DTR2G - onsemi.

#### Datasheets

[MC74LCX574.pdf](#)

#### Environmental Information

[onsemi REACH.pdf](#)

[onsemi RoHS.pdf](#)

[Material Declaration MC74LCX574DTR2G.pdf](#)

### Customers Also Interested in

## Recommended Products



**MC74LCX541DWR2G**  
onsemi  
IC BUF NON-INVERT 3.6V 20SOIC



**MC74LCX652DTR2**  
onsemi  
REGISTERED BUS TRANSCEIVER



**MC74LCX573DTR**  
AMI Semiconductor/onsemi



**MC74LCX573DTR2**  
onsemi  
IC LATCH OCT 3ST LV CMOS 20TSSOP



**MC74LCX574DTR2**  
Motorola  
IC FF D-TYPE SNGL 8BIT 20TSSOP



**MC74LCX86DR2G**  
onsemi  
IC GATE XOR 4CH 2-INP 14SOIC



**MC74LCX86DTR2**  
onsemi  
IC GATE XOR 4CH 2-INP 14TSSOP



**MC74LCX573DT**  
onsemi  
IC LATCH TRANSP OCT LV 20-TSSOP



**MC74LCX74DR2G**  
onsemi  
IC FF D-TYPE DUAL 1BIT 14SOIC



**MC74LCX74DTR2**  
onsemi  
IC FF D-TYPE DUAL 1BIT 14TSSOP



**MC74LCX74DTR2G**  
onsemi  
IC FF D-TYPE DUAL 1BIT 14TSSOP



**MC74LCX74D**  
onsemi  
IC FF D-TYPE DUAL 1BIT 14SOIC



**MC74LCX541DWG**  
onsemi  
IC BUF NON-INVERT 3.6V 20SOIC



**MC74LCX574DTR2**  
onsemi  
IC FF D-TYPE SNGL 8BIT 20TSSOP



**MC74LCX573DTR2G**  
onsemi  
IC LATCH OCT 3ST LV CMOS 20TSSOP



**MC74LCX74DT**  
onsemi  
IC FF D-TYPE DUAL 1BIT 14TSSOP



**MC74LCX573DWR2G**  
onsemi  
IC LATCH TRANSP OCT LV 20SOIC



**MC74LCX573DWR2**  
onsemi  
IC LATCH TRANSP OCT LV 20SOIC

## Shipment

### Delivery Time

In-stock items can be shipped within 24 hours. Some parts will be arranged for delivery within 1-2 days from the date all items arrive at our warehouse. And Allelco ships order once a day at about 17:00, except Sunday. Once the goods are shipped, the estimated delivery time depends on the shipping methods and Delivery destination. The table below shows are the logistic time for some common countries.

### Delivery Cost

- > Use your express account for shipment if you have one.
  - > Use our account for the shipment. Refer to the table below for the approximate charges.
- (Different time frame / countries / package size has different price.)

### Delivery Method

- > Global Common Shipment by DHL / UPS / FedEx / TNT / EMS / SF we support.
- > Others more shipping ways, please get in touch with your customer manager.

Common Countries Logistic Time Reference		
Region	Country	Logistic Time(Day)
America	United States	5
	Brazil	7
Europe	Germany	5
	United Kingdom	4
	Italy	5
Oceania	Australia	6
	New Zealand	7
Asia	India	6
	Japan	7
Middle East	Israel	6

DHL & FedEx Shipment Charges Reference	
Shipment charges(KG)	Reference DHL(USD\$)
0.00kg-1.00kg	USD\$60.00
1.00kg-2.00kg	USD\$70.00
2.00kg-3.00kg	USD\$80.00

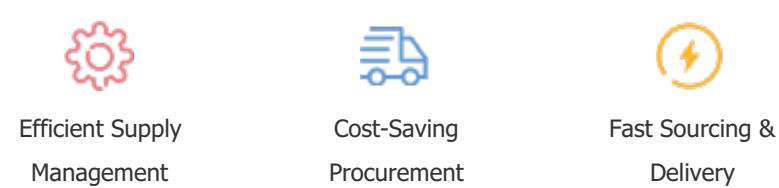
Note: The above table is for reference only. There may have some data bias for the uncontrollable factors.  
Contact us if you have any questions.

## Payment Support

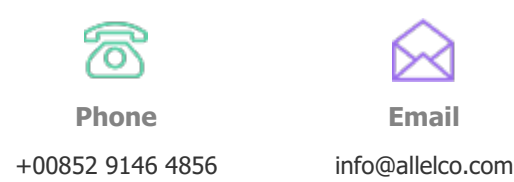
The payment method can be chosen from the methods shown below:  
Wire Transfer (T/T, Bank Transfer), Western Union, Credit card, PayPal.



## Your Faithful Supply Chain Partner -



Contact us if you have any questions.



## Certifications & Memberships



View More