



Image may be representation.  
See specifications for product details.



## MPXV5010DP

Manufacturer Part Number	<b>MPXV5010DP</b>
Manufacturer	<b>NXP Semiconductors</b>
Allelco Part Number	32D-MPXV5010DP
ECAD Model	Request Free CAD Models
Parts Description	SENSOR 1.45PSID 0.13" 4.7V 8SOP
Package	8-BSOP (0.475", 12.06mm Width) Dual Ports, Same Side
Data sheet	<b>Cylindrical Battery Holders.pdf</b>
RoHs Status	<b>ROHS3 Compliant</b>

**Get a Quote**

MPXV5010DP - NXP USA Inc..New Original in Stock. Download Linear Technology MPXV5010DP datasheet/specifications on AllelcoElec.com.  
Request a quote for MPXV5010DP, please send us email: [info@allelco.com](mailto:info@allelco.com)

### Specifications

MPXV5010DP Tech Specifications

MPXV5010DP - NXP USA Inc. technical specifications, attributes, parameters

Product Attribute	Attribute Value	Product Attribute	Attribute Value
Manufacturer	NXP Semiconductors	Output Type	Analog Voltage
Voltage - Supply	4.75V ~ 5.25V	Output	0.2 V ~ 4.7 V
Termination Style	Gull Wing	Operating Temperature	-40°C ~ 125°C
Supplier Device Package	8-SOP	Operating Pressure	1.45PSI (10kPa)
Series	MPXV5010	Mounting Type	Surface Mount
Pressure Type	Differential	Maximum Pressure	5.8PSI (40kPa)
Port Style	Barbed	Features	Temperature Compensated
Port Size	Male - 0.13" (3.3mm) Tube, Dual	Base Product Number	MPXV5010
Package / Case	8-BSOP (0.475", 12.06mm Width) Dual Ports, Same Side	Applications	Board Mount
Package	Tray	Accuracy	±5%

### Parts with Similar Specifications

The three parts on the right have similar specifications to NXP USA Inc. MPXV5010DP

Product Attribute				
Part Number	MPXV5010DP	MPXV5010GC7U	MPXV5010GC6U	MPXV4006DP
Manufacturer	NXP USA Inc.	NXP USA Inc.	NXP USA Inc.	NXP USA Inc.
Series	MPXV5010	MPXV5010	MPXV5010	MPXV4006G
Package / Case	8-BSOP (0.475", 12.06mm Width) Dual Ports, Same Side	8-DIP (0.550", 13.97mm), Top Port	8-SMD, Gull Wing, Top Port	8-BSOP (0.475", 12.06mm Width) Dual Ports, Same Side
Operating Pressure	1.45PSI (10kPa)	1.45PSI (10kPa)	1.45PSI (10kPa)	0.87PSI (6kPa)
Features	Temperature Compensated	Temperature Compensated	Temperature Compensated	Temperature Compensated
Mounting Type	Surface Mount	Through Hole	Surface Mount	Surface Mount
Applications	Board Mount	Board Mount	Board Mount	Board Mount
Supplier Device Package	8-SOP	8-DIP	-	8-SOP
Accuracy	±5%	±5%	±5%	±5%
Termination Style	Gull Wing	PC Pin	Gull Wing	Gull Wing
Port Size	Male - 0.13" (3.3mm) Tube, Dual	Male - 0.13" (3.17mm) Tube	Male - 0.13" (3.17mm) Tube	Male - 0.13" (3.3mm) Tube, Dual
Output	0.2 V ~ 4.7 V	0.2 V ~ 4.7 V	0.2 V ~ 4.7 V	0.2 V ~ 4.7 V
Port Style	Barbed	Barbless	Barbless	Barbed
Output Type	Analog Voltage	Analog Voltage	Analog Voltage	Analog Voltage
Pressure Type	Differential	Vented Gauge	Vented Gauge	Differential
Voltage - Supply	4.75V ~ 5.25V	4.75V ~ 5.25V	4.75V ~ 5.25V	4.75V ~ 5.25V
Base Product Number	MPXV5010	MPXV5010	MPXV5	MPXV4006
Package	Tray	Tube	Tube	Tray
Maximum Pressure	5.8PSI (40kPa)	5.8PSI (40kPa)	5.8PSI (40kPa)	3.48PSI (24kPa)
Operating Temperature	-40°C ~ 125°C	-40°C ~ 125°C	-40°C ~ 125°C	-10°C ~ 60°C

### MPXV5010DP Datasheet PDF

Download MPXV5010DP pdf datasheets and NXP USA Inc. documentation for MPXV5010DP - NXP USA Inc..

#### Datasheets

[Cylindrical Battery Holders.pdf](#)

#### PCN Packaging

[2.73KHz.pdf](#)

#### Environmental Information

## Customers Also Interested in

### Recommended Products



**MPXV5010GC7U**  
NXP USA Inc.  
SENSOR 1.45PSIG 0.13" 4.7V 8DIP



**MPXV5010GC6U**  
NXP USA Inc.  
SENSOR 1.45PSIG 0.13" 4.7V



**MPXV4006DP**  
NXP USA Inc.  
SENSOR 0.87PSID 0.13" 4.7V 8SOP



**MPXV2202DPT1**  
NXP USA Inc.  
SENSOR 29.01PSID 0.13" .04V 8SOP



**MPXV5004GVP**  
Freescale Semiconductor  
SENSOR 0.57PSIG 0.13" 4.9V 8SOP



**MPXV5010GC6T1**  
NXP USA Inc.  
SENSOR 1.45PSIG 0.13" 4.7V



**MPXV5004G**  
Freescale / NXP Semiconductors



**MPXV4006GC6U**  
NXP USA Inc.  
SENSOR 0.87PSIG 0.13" 4.7V



**MPXV5050GP**  
NXP USA Inc.  
SENSOR 7.25PSIG 0.13" 4.7V 8SOP



**MPXV5004GC6U**  
NXP USA Inc.  
SENSOR 0.57PSIG 0.13" 4.9V



**MPXV5050DP**  
NXP USA Inc.  
SENSOR 7.25PSID 0.13" 4.7V 8SOP



**MPXV5004GC6T1**  
NXP USA Inc.  
SENSOR 0.57PSIG 0.13" 4.9V



**MPXV5100DP**  
Freescale Semiconductor  
SENSOR 14.5PSID 0.13" 4.7V 8SOP



**MPXV5004GVP**  
NXP USA Inc.  
SENSOR 0.57PSIG 0.13" 4.9V 8SOP



**MPXV5050VC6T1**  
NXP USA Inc.  
SENSOR 7.25PSI 0.13" 4.6V



**MPXV2102GP**  
NXP USA Inc.  
SENSOR 14.5PSIG 0.13" .04V 8SOP



**MPXV4006GC6T1**  
NXP USA Inc.  
SENSOR 0.87PSIG 0.13" 4.7V



**MPXV5010GP**  
NXP USA Inc.  
SENSOR 1.45PSIG 0.13" 4.7V 8SOP

## Shipment

### Delivery Time

In-stock items can be shipped within 24 hours. Some parts will be arranged for delivery within 1-2 days from the date all items arrive at our warehouse. And Allelco ships order once a day at about 17:00, except Sunday. Once the goods are shipped, the estimated delivery time depends on the shipping methods and Delivery destination. The table below shows are the logistic time for some common countries.

### Delivery Cost

- > Use your express account for shipment if you have one.
  - > Use our account for the shipment. Refer to the table below for the approximate charges.
- (Different time frame / countries / package size has different price.)

### Delivery Method

- > Global Common Shipment by DHL / UPS / FedEx / TNT / EMS / SF we support.
- > Others more shipping ways, please get in touch with your customer manager.

Common Countries Logistic Time Reference

Region	Country	Logistic Time(Day)
America	United States	5
	Brazil	7
Europe	Germany	5
	United Kingdom	4
	Italy	5
Oceania	Australia	6
	New Zealand	7
Asia	India	6
	Japan	7
Middle East	Israel	6

DHL & FedEx Shipment Charges Reference

Shipment charges(KG)	Reference DHL(USD\$)
0.00kg-1.00kg	USD\$60.00
1.00kg-2.00kg	USD\$70.00
2.00kg-3.00kg	USD\$80.00

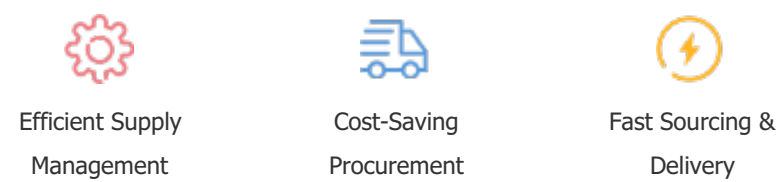
**Note:** The above table is for reference only. There may have some data bias for the uncontrollable factors. Contact us if you have any questions.

### Payment Support

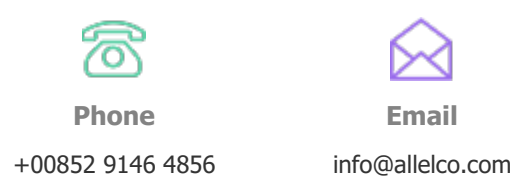
The payment method can be chosen from the methods shown below:  
Wire Transfer (T/T, Bank Transfer), Western Union, Credit card, PayPal.



### Your Faithful Supply Chain Partner -



Contact us if you have any questions.



### Certifications & Memberships



[View More](#)