



Image may be representation.  
See specifications for product details.



## XC9572XL-7VQ64I

|                          |                           |
|--------------------------|---------------------------|
| Manufacturer Part Number | <b>XC9572XL-7VQ64I</b>    |
| Manufacturer             | <b>AMD Xilinx</b>         |
| Allelco Part Number      | 32D-XC9572XL-7VQ64I       |
| ECAD Model               | Request Free CAD Models   |
| Parts Description        | IC CPLD 72MC 7.5NS 64VQFP |
| Package                  | 64-TQFP                   |
| Data sheet               | XC9572XL-7VQ64I.pdf       |

**Get a Quote**

XC9572XL-7VQ64I - AMD.New Original in Stock. Download Linear Technology XC9572XL-7VQ64I datasheet/specifications on AllelcoElec.com.  
Request a quote for XC9572XL-7VQ64I, please send us email: [info@allelco.com](mailto:info@allelco.com)

### Specifications

XC9572XL-7VQ64I Tech Specifications  
XC9572XL-7VQ64I - AMD technical specifications, attributes, parameters

| Product Attribute         | Attribute Value                                       | Product Attribute               | Attribute Value |
|---------------------------|---|---------------------------------|-----------------|
| Manufacturer              | AMD Xilinx  | Number of Macrocells            | 72              |
| Voltage Supply - Internal | 3V ~ 3.6V   | Number of Logic Elements/Blocks | 4               |
| Supplier Device Package   | 64-VQFP (10x10)                                       | Number of I/O                   | 52              |
| Series                    | XC9500XL  | Number of Gates                 | 1600            |
| Programmable Type         | In System Programmable (min 10K program/erase cycles) | Mounting Type                   | Surface Mount   |
| Package / Case            | 64-TQFP   | Delay Time tpd(1) Max           | 7.5 ns          |
| Package                   | Tray  | Base Product Number             | XC9572          |
| Operating Temperature     | -40°C ~ 85°C (TA)                                     |                                 |                 |

### Parts with Similar Specifications

The three parts on the right have similar specifications to AMD XC9572XL-7VQ64I

| Product Attribute               |   |   |   |   |
|---------------------------------|---|---|---|---|
| Part Number                     | XC9572XL-7VQ64I                                       | XC9572XL-7VQ44I                                       | XC9572XL-7VQG44C                                      | XC9572XL-7VQG64C                                      |
| Manufacturer                    | AMD   | AMD   | AMD   | AMD   |
| Mounting Type                   | Surface Mount   | Surface Mount   | Surface Mount   | Surface Mount   |
| Delay Time tpd(1) Max           | 7.5 ns  | 7.5 ns  | 7.5 ns  | 7.5 ns  |
| Voltage Supply - Internal       | 3V ~ 3.6V   | 3V ~ 3.6V   | 3V ~ 3.6V   | 3V ~ 3.6V   |
| Package                         | Tray  | Tray  | Tray  | Tray  |
| Base Product Number             | XC9572  | XC9572  | XC9572  | XC9572  |
| Operating Temperature           | -40°C ~ 85°C (TA)                                     | -40°C ~ 85°C (TA)                                     | 0°C ~ 70°C (TA)                                       | 0°C ~ 70°C (TA)                                       |
| Number of Logic Elements/Blocks | 4   | 4   | 4   | 4   |
| Number of Gates                 | 1600  | 1600  | 1600  | 1600  |
| Package / Case                  | 64-TQFP   | 44-TQFP   | 44-TQFP   | 64-TQFP   |
| Number of Macrocells            | 72  | 72  | 72  | 72  |
| Number of I/O                   | 52  | 34  | 34  | 52  |
| Supplier Device Package         | 64-VQFP (10x10)                                       | 44-VQFP (10x10)                                       | 44-VQFP (10x10)                                       | 64-VQFP (10x10)                                       |
| Programmable Type               | In System Programmable (min 10K program/erase cycles) | In System Programmable (min 10K program/erase cycles) | In System Programmable (min 10K program/erase cycles) | In System Programmable (min 10K program/erase cycles) |
| Series                          | XC9500XL  | XC9500XL  | XC9500XL  | XC9500XL  |

### XC9572XL-7VQ64I Datasheet PDF

Download XC9572XL-7VQ64I pdf datasheets and AMD documentation for XC9572XL-7VQ64I - AMD.

#### PCN Assembly/Origin

Mult Dev LeadFrame Chg 29/Oct/2018.pdf

#### Environmental Information

Xilinx REACH211 Cert.pdf

### Customers Also Interested in

#### Recommended Products



**XC9572XL-7TQ100**  
AMD Xilinx

**XC9572XL-TQG100C**  
AMD Xilinx

**XC9572XL-7VQ44I**  
AMD  
IC CPLD 72MC 7.5NS 44VQFP

**XC9572XL-7PC44**  
AMD Xilinx

**XC9572XL-7VQG44C**  
AMD  
IC CPLD 72MC 7.5NS 44VQFP

**XC9572XL-7VGG64I**  
AMD Xilinx



**XC9572XL-TQ100BEN**  
AMD Xilinx

**XC9572XL-TQG100AWN**  
AMD Xilinx

**XC9572XL-7VQG64C**  
AMD  
IC CPLD 72MC 7.5NS 64VQFP

**XC9572XL-TQ100BMN**  
AMD Xilinx

**XC9572XL-7TQ100I**  
AMD  
IC CPLD 72MC 7.5NS 100TQFP

**XC9572XL-VQ64AWN**  
AMD Xilinx



**XC9572XL-7VQG64C**  
AMD  
IC CPLD 72MC 7.5NS 64VQFP

**XC9572XL-7TQG100I**  
AMD  
IC CPLD 72MC 7.5NS 100TQFP

**XC9572XL-7VQG64I**  
AMD  
IC CPLD 72MC 7.5NS 64VQFP

**XC9572XL-7PCG44I**  
AMD  
IC CPLD 72MC 7.5NS 44PLCC

**XC9572XL-7TQ100C**  
AMD  
IC CPLD 72MC 7.5NS 100TQFP

**XC9572XL-7TQG100C**  
AMD  
IC CPLD 72MC 7.5NS 100TQFP

## Shipment

### Delivery Time

In-stock items can be shipped within 24 hours. Some parts will be arranged for delivery within 1-2 days from the date all items arrive at our warehouse. And Allelco ships order once a day at about 17:00, except Sunday. Once the goods are shipped, the estimated delivery time depends on the shipping methods and Delivery destination. The table below shows are the logistic time for some common countries.

### Delivery Cost

- > Use your express account for shipment if you have one.
- > Use our account for the shipment. Refer to the table below for the approximate charges.  
(Different time frame / countries / package size has different price.)

### Delivery Method

- > Global Common Shipment by DHL / UPS / FedEx / TNT / EMS / SF we support.
- > Others more shipping ways, please get in touch with your customer manager.

| Common Countries Logistic Time Reference |                |                    |
|--|----------------|--------------------|
| Region                                   | Country        | Logistic Time(Day) |
| America                                  | United States  | 5                  |
|  | Brazil         | 7                  |
| Europe                                   | Germany        | 5                  |
|  | United Kingdom | 4                  |
|  | Italy          | 5                  |
| Oceania                                  | Australia      | 6                  |
|  | New Zealand    | 7                  |
| Asia                                     | India          | 6                  |
|  | Japan          | 7                  |
| Middle East                              | Israel         | 6                  |

| DHL & FedEx Shipment Charges Reference |                      |
|--|----------------------|
| Shipment charges(KG)                   | Reference DHL(USD\$) |
| 0.00kg-1.00kg                          | USD\$60.00           |
| 1.00kg-2.00kg                          | USD\$70.00           |
| 2.00kg-3.00kg                          | USD\$80.00           |

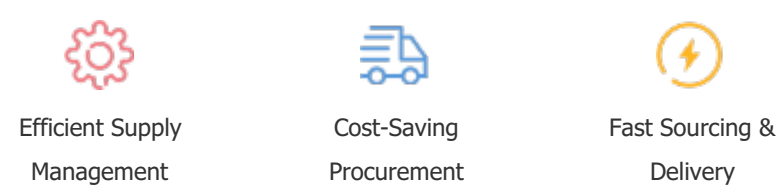
**Note:** The above table is for reference only. There may have some data bias for the uncontrollable factors.  
Contact us if you have any questions.

## Payment Support

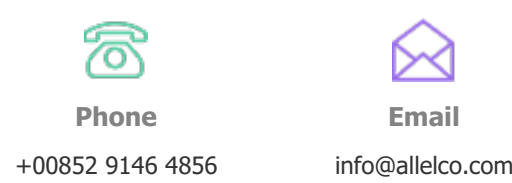
The payment method can be chosen from the methods shown below:  
Wire Transfer (T/T, Bank Transfer), Western Union, Credit card, PayPal.



## Your Faithful Supply Chain Partner -



Contact us if you have any questions.



## Certifications & Memberships



[View More](#)



## Contact us

Address: Flat/Rm C 13/F Harvard Commercial Building 105-111 Thomson Road, Wan Chai, Hong Kong  
Phone: +00852 9146 4856  
Fax: +00852 3010 8510  
Email: info@Allelco.com