



Image may be representation.
See specifications for product details.



STTH20003TV1

Manufacturer Part Number	STTH20003TV1
Manufacturer	STMicroelectronics
Allelco Part Number	32D-STTH20003TV1
ECAD Model	3D Model
Parts Description	DIODE MODULE 300V 100A ISOTOP
Package	ISOTOP
Data sheet	STTH20003TV.pdf
RoHs Status	ROHS3 Compliant

Get a Quote

STTH20003TV1 - STMicroelectronics.New Original in Stock. Download Linear Technology STTH20003TV1 datasheet/specifications on AllelcoElec.com.
Request a quote for STTH20003TV1, please send us email: info@allelco.com

Specifications

STTH20003TV1 Tech Specifications
STTH20003TV1 - STMicroelectronics technical specifications, attributes, parameters

Product Attribute	Attribute Value	Product Attribute	Attribute Value
Manufacturer	STMicroelectronics	Package / Case	ISOTOP
Voltage - Forward (Vf) (Max) @ If	1.2 V @ 100 A	Package	Tube
Voltage - DC Reverse (Vr) (Max)	300 V	Operating Temperature - Junction	150°C (Max)
Technology	Standard	Mounting Type	Chassis Mount
Supplier Device Package	ISOTOP®	Diode Configuration	2 Independent
Speed	Fast Recovery =< 500ns, > 200mA (Io)	Current - Reverse Leakage @ Vr	200 µA @ 300 V
Series	-	Current - Average Rectified (Io) (per Diode)	100A
Reverse Recovery Time (trr)	90 ns	Base Product Number	STTH20003

Parts with Similar Specifications

The three parts on the right have similar specifications to STMicroelectronics STTH20003TV1

Product Attribute				
Part Number	STTH20003TV1	STTH2002CG-TR	STTH2002CR	STTH2002CG
Manufacturer	STMicroelectronics	STMicroelectronics	STMicroelectronics	STMicroelectronics
Speed	Fast Recovery =< 500ns, > 200mA (Io)	Fast Recovery =< 500ns, > 200mA (Io)	Fast Recovery =< 500ns, > 200mA (Io)	Fast Recovery =< 500ns, > 200mA (Io)
Series	-	-	-	-
Package / Case	ISOTOP	TO-263-3, D ² Pak (2 Leads + Tab), TO-263AB	TO-262-3 Long Leads, I ² Pak, TO-262AA	TO-263-3, D ² Pak (2 Leads + Tab), TO-263AB
Package	Tube	Tape & Reel (TR)	Tube	Tube
Current - Average Rectified (Io) (per Diode)	100A	15A	15A	15A
Reverse Recovery Time (trr)	90 ns	27 ns	27 ns	27 ns
Diode Configuration	2 Independent	1 Pair Common Cathode	1 Pair Common Cathode	1 Pair Common Cathode
Base Product Number	STTH20003	STTH2002	STTH2002	STTH2
Current - Reverse Leakage @ Vr	200 µA @ 300 V	10 µA @ 200 V	10 µA @ 200 V	10 µA @ 200 V
Technology	Standard	Standard	Standard	Standard
Voltage - Forward (Vf) (Max) @ If	1.2 V @ 100 A	1.1 V @ 10 A	1.1 V @ 10 A	1.1 V @ 10 A
Supplier Device Package	ISOTOP®	D2PAK	I2PAK	D2PAK
Mounting Type	Chassis Mount	Surface Mount	Through Hole	Surface Mount
Operating Temperature - Junction	150°C (Max)	175°C (Max)	175°C (Max)	175°C (Max)
Voltage - DC Reverse (Vr) (Max)	300 V	200 V	200 V	200 V

STTH20003TV1 Datasheet PDF

Download STTH20003TV1 pdf datasheets and STMicroelectronics documentation for STTH20003TV1 - STMicroelectronics.

Datasheets

[STTH20003TV.pdf](#)

PCN Design/Specification

[Mult Dev Adv Material Notice 8/Apr/2019.pdf](#)

PCN Assembly/Origin

[Mold compound 20/May/2019.pdf](#)

Customers Also Interested in

Recommended Products



STTH2002CG-TR
STMicroelectronics
DIODE ARRAY GP 200V 15A D2PAK



STTH2002CR
STMicroelectronics
DIODE ARRAY GP 200V 15A I2PAK



STTH2002CG
STMicroelectronics
DIODE ARRAY GP 200V 15A D2PAK



STTH1R06A-H
STMicroelectronics



STTH20002TV2
STMicroelectronics
IGBT Module



STTH20002TV1
STMicroelectronics
DIODE MODULE 200V 120A ISOTOP



STTH2002C6
STMicroelectronics



STTH1R06A-H/N
STMicroelectronics



STTH1R06U
STMicroelectronics
DIODE GEN PURP 600V 1A SMB



STTH1R06A-TR
STMicroelectronics



STTH1R06R
STMicroelectronics



STTH1R06U/Z
STMicroelectronics



STTH2002CW
STMicroelectronics



STTH2002CT
STMicroelectronics
DIODE ARRAY GP 200V 15A TO220AB



STTH1R06A
STMicroelectronics
DIODE GEN PURP 600V 1A SMA



STTH20004TV1
STMicroelectronics
DIODE MODULE 400V 120A ISOTOP



STTH2002CFP
STMicroelectronics
DIODE ARRAY GP 200V 10A TO220FP



STTH1R06RL
STMicroelectronics
DIODE GEN PURP 600V 1A DO41

Shipment

Delivery Time

In-stock items can be shipped within 24 hours. Some parts will be arranged for delivery within 1-2 days from the date all items arrive at our warehouse. And Allelco ships order once a day at about 17:00, except Sunday. Once the goods are shipped, the estimated delivery time depends on the shipping methods and Delivery destination. The table below shows are the logistic time for some common countries.

Delivery Cost

> Use your express account for shipment if you have one.

> Use our account for the shipment. Refer to the table below for the approximate charges.

(Different time frame / countries / package size has different price.)

Delivery Method

> Global Common Shipment by DHL / UPS / FedEx / TNT / EMS / SF we support.

> Others more shipping ways, please get in touch with your customer manager.

Common Countries Logistic Time Reference		
Region	Country	Logistic Time(Day)
America	United States	5
	Brazil	7
Europe	Germany	5
	United Kingdom	4
	Italy	5
Oceania	Australia	6
	New Zealand	7
Asia	India	6
	Japan	7
Middle East	Israel	6

DHL & FedEx Shipment Charges Reference	
Shipment charges(KG)	Reference DHL(USD\$)
0.00kg-1.00kg	USD\$60.00
1.00kg-2.00kg	USD\$70.00
2.00kg-3.00kg	USD\$80.00

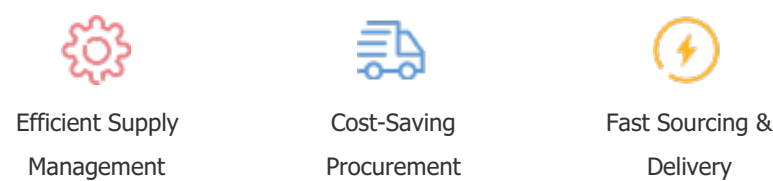
Note: The above table is for reference only. There may have some data bias for the uncontrollable factors.
Contact us if you have any questions.

Payment Support

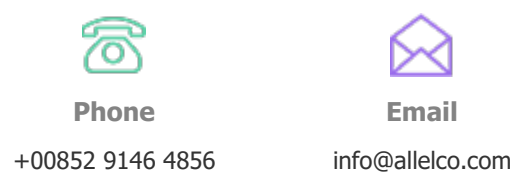
The payment method can be chosen from the methods shown below:
Wire Transfer (T/T, Bank Transfer), Western Union, Credit card, PayPal.



Your Faithful Supply Chain Partner -



Contact us if you have any questions.



Certifications & Memberships



[View More](#)