

Image may be representation.
See specifications for product details.



5SGXMBBR2H40I3NAB

Manufacturer Part Number	5SGXMBBR2H40I3NAB
Manufacturer	Intel
Allelco Part Number	32D-5SGXMBBR2H40I3NAB
ECAD Model	Request Free CAD Models
Parts Description	IC FPGA 696 I/O 1517HBGA
Package	1517-BBGA, FCBGA
Data sheet	5SGXMBBR2H40I3NAB.pdf

Get a Quote

5SGXMBBR2H40I3NAB - Intel.New Original in Stock. Download Linear Technology 5SGXMBBR2H40I3NAB datasheet/specifications on AllelcoElec.com.
Request a quote for 5SGXMBBR2H40I3NAB, please send us email: info@allelco.com

Specifications

5SGXMBBR2H40I3NAB Tech Specifications
5SGXMBBR2H40I3NAB - Intel technical specifications, attributes, parameters

Product Attribute	Attribute Value	Product Attribute	Attribute Value
Manufacturer	Intel	Operating Temperature	-40°C ~ 100°C (TJ)
Voltage - Supply	0.82V ~ 0.88V	Number of Logic Elements/Cells	952000
Total RAM Bits	53248000	Number of LABs/CLBs	359200
Supplier Device Package	1517-HBGA (45x45)	Number of I/O	696
Series	Stratix® V GX	Mounting Type	Surface Mount
Package / Case	1517-BBGA, FCBGA	Base Product Number	5SGXMBB
Package	Tray		

Parts with Similar Specifications

The three parts on the right have similar specifications to Intel 5SGXMBBR2H40I3NAB

Product Attribute				
Part Number	5SGXMBBR2H40I3NAB	5SGXMA7N3F45C4N	5SGXMA7K2F35I3NAA	5SGXMA9K2H40I2N
Manufacturer	Intel	Intel	Intel	Intel
Series	Stratix® V GX	Stratix® V GX	Stratix® V GX	Stratix® V GX
Base Product Number	5SGXMBB	5SGXMA7	5SGXMA7	5SGXMA9
Mounting Type	Surface Mount	Surface Mount	Surface Mount	Surface Mount
Number of LABs/CLBs	359200	234720	234720	317000
Operating Temperature	-40°C ~ 100°C (TJ)	0°C ~ 85°C (TJ)	-40°C ~ 100°C (TJ)	-40°C ~ 100°C (TJ)
Package / Case	1517-BBGA, FCBGA	1932-BBGA, FCBGA	1152-BBGA, FCBGA	1517-BBGA, FCBGA
Package	Tray	Tray	Tray	Tray
Total RAM Bits	53248000	51200000	51200000	53248000
Number of Logic Elements/Cells	952000	622000	622000	840000
Supplier Device Package	1517-HBGA (45x45)	1932-FBGA, FC (45x45)	1152-FBGA (35x35)	1517-HBGA (45x45)
Number of I/O	696	840	432	696
Voltage - Supply	0.82V ~ 0.88V	0.82V ~ 0.88V	0.82V ~ 0.88V	0.87V ~ 0.93V

5SGXMBBR2H40I3NAB Datasheet PDF

Download 5SGXMBBR2H40I3NAB pdf datasheets and Intel documentation for 5SGXMBBR2H40I3NAB - Intel.

PCN Obsolescence/ EOL

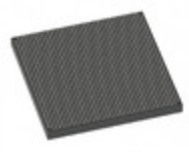
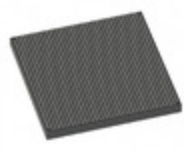
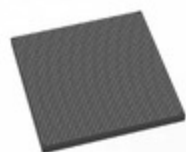
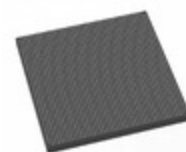
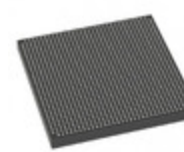
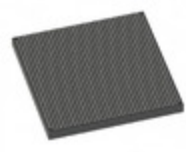
[Mult Dev EOL 30/Mar/2020.pdf](#)

[Mult Dev EOL Rev 30/Mar/2020.pdf](#)

Customers Also Interested in

Recommended Products

5SGXMA7N3F45C4N	5SGXMA7K2F35I3NAA	5SGXMA9K2H40I2N	5SGXMA9N2F45I2N	5SGXMA7H3F35C2NGA	5SGXMA7N2F40C2N
Intel IC FPGA 840 I/O 1932FBGA	Intel IC FPGA 432 I/O 1152FBGA	Intel IC FPGA 696 I/O 1517HBGA	Intel IC FPGA 840 I/O 1932FBGA	Altera (Intel)	Intel IC FPGA 600 I/O 1517FBGA
5SGXMBBR2H43I2N	5SGXMA7K2F40C2N	5SGXMA7N2F45C2	5SGXMA7K2F40I3LN	5SGXMA9N2F45C2N	5SGXMA7N2F45I3LN
Intel IC FPGA 600 I/O 1760HBGA	Intel IC FPGA 696 I/O 1517FBGA	Intel IC FPGA 840 I/O 1932FBGA	Intel IC FPGA 696 I/O 1517FBGA	Intel IC FPGA 840 I/O 1932FBGA	Intel IC FPGA 840 I/O 1932FBGA

**5SGXMA7K2F40I3N**Intel
IC FPGA 696 I/O 1517FBGA**5SGXMABK2H40I2N**Intel
IC FPGA 696 I/O 1517HBGA**5SGXMA9N2F45C2N**Intel
IC FPGA 840 I/O 1932FBGA**5SGXMABN2F45C2NCV**Intel
IC FPGA 840 I/O 1932FBGA**5SGXMA7H3F35I3N**Intel
IC FPGA 552 I/O 1152FBGA**5SGXMBBR2H40I3N**Intel
IC FPGA 696 I/O 1517HBGA

Shipment

Delivery Time

In-stock items can be shipped within 24 hours. Some parts will be arranged for delivery within 1-2 days from the date all items arrive at our warehouse. And Allelco ships order once a day at about 17:00, except Sunday. Once the goods are shipped, the estimated delivery time depends on the shipping methods and Delivery destination. The table below shows are the logistic time for some common countries.

Delivery Cost

> Use your express account for shipment if you have one.

> Use our account for the shipment. Refer to the table below for the approximate charges.

(Different time frame / countries / package size has different price.)

Delivery Method

> Global Common Shipment by DHL / UPS / FedEx / TNT / EMS / SF we support.

> Others more shipping ways, please get in touch with your customer manager.

Common Countries Logistic Time Reference

Region	Country	Logistic Time(Day)
America	United States	5
	Brazil	7
Europe	Germany	5
	United Kingdom	4
	Italy	5
Oceania	Australia	6
	New Zealand	7
Asia	India	6
	Japan	7
Middle East	Israel	6

DHL & FedEx Shipment Charges Reference

Shipment charges(KG)	Reference DHL(USD\$)
0.00kg-1.00kg	USD\$60.00
1.00kg-2.00kg	USD\$70.00
2.00kg-3.00kg	USD\$80.00

Note: The above table is for reference only. There may have some data bias for the uncontrollable factors.
Contact us if you have any questions.

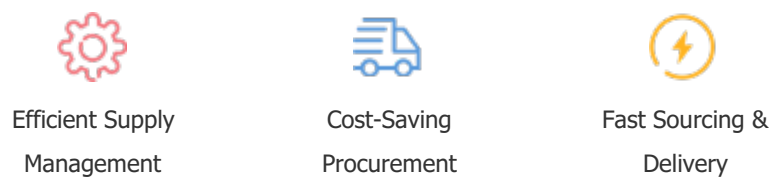
Payment Support

The payment method can be chosen from the methods shown below:

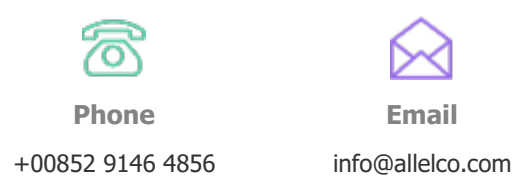
Wire Transfer (T/T, Bank Transfer), Western Union, Credit card, PayPal.



Your Faithful Supply Chain Partner -



Contact us if you have any questions.



Certifications & Memberships



[View More](#)



Contact us

Address: Flat/Rm C 13/F Harvard Commercial Building 105-111 Thomson Road, Wan Chai, Hong Kong

Phone: +00852 9146 4856

Fax: +00852 3010 8510

Email: info@Allelco.com

Copyright © 2012-2023 AllelcoElec.com. All rights reserved.