

Image may be representation.
See specifications for product details.



ADM809TART-REEL7

Manufacturer Part Number	ADM809TART-REEL7
Manufacturer	Analog Devices, Inc.
Allelco Part Number	32D-ADM809TART-REEL7
ECAD Model	Request Free CAD Models
Parts Description	IC SUPERVISOR 1 CHANNEL SOT23-3
Package	TO-236-3, SC-59, SOT-23-3
Data sheet	Cylindrical Battery Holders.pdf

Get a Quote

ADM809TART-REEL7 - Analog Devices Inc..New Original in Stock. Download Linear Technology ADM809TART-REEL7 datasheet/specifications on AllelcoElec.com.
Request a quote for ADM809TART-REEL7, please send us email: info@allelco.com

Specifications

ADM809TART-REEL7 Tech Specifications
ADM809TART-REEL7 - Analog Devices Inc. technical specifications, attributes, parameters

Product Attribute	Attribute Value	Product Attribute	Attribute Value
Manufacturer	Analog Devices, Inc.	Package / Case	TO-236-3, SC-59, SOT-23-3
Voltage - Threshold	3.08V	Package	Tape & Reel (TR)
Type	Simple Reset/Power-On Reset	Output	Push-Pull, Totem Pole
Supplier Device Package	SOT-23-3	Operating Temperature	-40°C ~ 125°C (TA)
Series	-	Number of Voltages Monitored	1
Reset Timeout	140ms Minimum	Mounting Type	Surface Mount
Reset	Active Low	Base Product Number	ADM809

Parts with Similar Specifications

The three parts on the right have similar specifications to Analog Devices Inc. ADM809TART-REEL7

Product Attribute				
Part Number	ADM809TART-REEL7	ADM809TARTZ-REEL	ADM809TAKSZ-REEL	ADM809TAKSZ-REEL7
Manufacturer	Analog Devices Inc.	Analog Devices Inc.	Analog Devices Inc.	Analog Devices Inc.
Voltage - Threshold	3.08V	3.08V	3.08V	3.08V
Number of Voltages Monitored	1	1	1	1
Mounting Type	Surface Mount	Surface Mount	Surface Mount	Surface Mount
Output	Push-Pull, Totem Pole	Push-Pull, Totem Pole	Push-Pull, Totem Pole	Push-Pull, Totem Pole
Reset	Active Low	Active Low	Active Low	Active Low
Supplier Device Package	SOT-23-3	SOT-23-3	SC-70-3	SC-70-3
Package / Case	TO-236-3, SC-59, SOT-23-3	TO-236-3, SC-59, SOT-23-3	SC-70, SOT-323	SC-70, SOT-323
Base Product Number	ADM809	ADM809	ADM809	ADM809
Operating Temperature	-40°C ~ 125°C (TA)	-40°C ~ 125°C (TA)	-40°C ~ 125°C (TA)	-40°C ~ 125°C (TA)
Type	Simple Reset/Power-On Reset	Simple Reset/Power-On Reset	Simple Reset/Power-On Reset	Simple Reset/Power-On Reset
Package	Tape & Reel (TR)	Tape & Reel (TR)	Tape & Reel (TR)	Tape & Reel (TR)
Reset Timeout	140ms Minimum	140ms Minimum	140ms Minimum	140ms Minimum
Series	-	-	-	-

ADM809TART-REEL7 Datasheet PDF

Download ADM809TART-REEL7 pdf datasheets and Analog Devices Inc. documentation for ADM809TART-REEL7 - Analog Devices Inc..

Datasheets

[Cylindrical Battery Holders.pdf](#)

Other Related Documents

[Tape and Reel Packaging.pdf](#)

PCN Obsolescence/ EOL

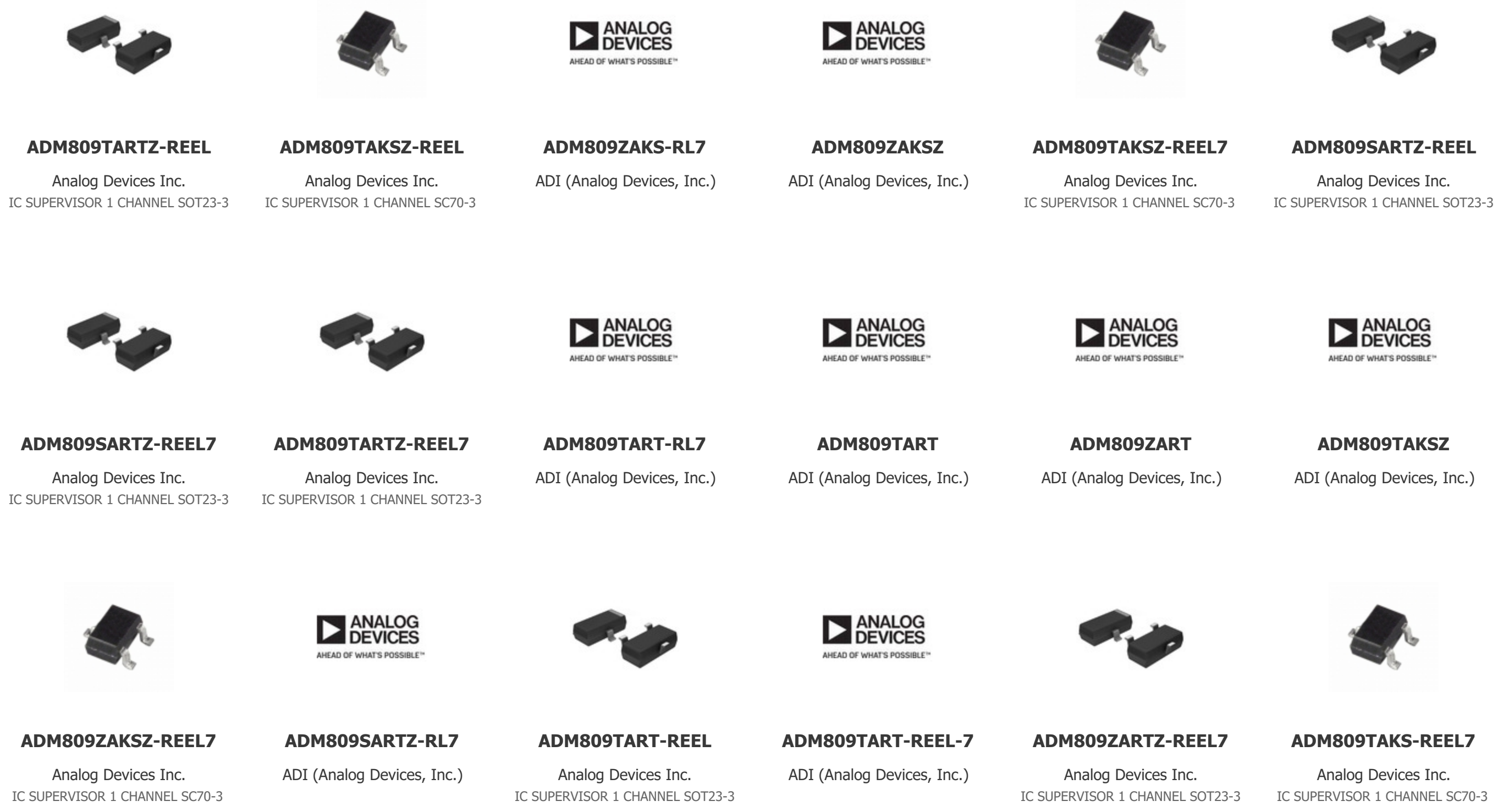
[Cylindrical Battery Holders.pdf](#)

PCN Assembly/Origin

[2.73KHz.pdf](#)

Customers Also Interested in

Recommended Products



Shipment

Delivery Time

In-stock items can be shipped within 24 hours. Some parts will be arranged for delivery within 1-2 days from the date all items arrive at our warehouse. And Allelco ships order once a day at about 17:00, except Sunday. Once the goods are shipped, the estimated delivery time depends on the shipping methods and Delivery destination. The table below shows are the logistic time for some common countries.

Delivery Cost

> Use your express account for shipment if you have one.

> Use our account for the shipment. Refer to the table below for the approximate charges.

(Different time frame / countries / package size has different price.)

Delivery Method

> Global Common Shipment by DHL / UPS / FedEx / TNT / EMS / SF we support.

> Others more shipping ways, please get in touch with your customer manager.

Common Countries Logistic Time Reference		
Region	Country	Logistic Time(Day)
America	United States	5
	Brazil	7
Europe	Germany	5
	United Kingdom	4
	Italy	5
Oceania	Australia	6
	New Zealand	7
Asia	India	6
	Japan	7
Middle East	Israel	6

DHL & FedEx Shipment Charges Reference	
Shipment charges(KG)	Reference DHL(USD\$)
0.00kg-1.00kg	USD\$60.00
1.00kg-2.00kg	USD\$70.00
2.00kg-3.00kg	USD\$80.00

Note: The above table is for reference only. There may have some data bias for the uncontrollable factors.

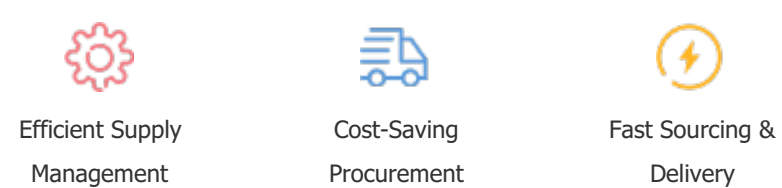
Contact us if you have any questions.

Payment Support

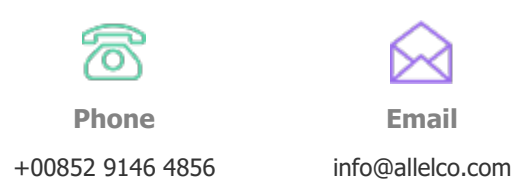
The payment method can be chosen from the methods shown below:
Wire Transfer (T/T, Bank Transfer), Western Union, Credit card,
PayPal.



Your Faithful Supply Chain Partner -



Contact us if you have any questions.



+00852 9146 4856

info@allelco.com

Certifications & Memberships



View More