



Image may be representation.  
See specifications for product details.



## MAX6250BESA

Manufacturer Part Number	<b>MAX6250BESA</b>
Manufacturer	<b>Maxim Integrated</b>
Allelco Part Number	32D-MAX6250BESA
ECAD Model	Request Free CAD Models
Parts Description	IC VREF SERIES 0.1% 8SOIC
Package	8-SOIC (0.154', 3.90mm Width)
Data sheet	<b>MAX6225,41,50.pdf</b>

**Get a Quote**

MAX6250BESA - Analog Devices Inc./Maxim Integrated. New Original in Stock. Download Linear Technology MAX6250BESA datasheet/specifications on AllelcoElec.com. Request a quote for MAX6250BESA, please send us email: [info@allelco.com](mailto:info@allelco.com)

### Specifications

MAX6250BESA Tech Specifications  
MAX6250BESA - Analog Devices Inc./Maxim Integrated technical specifications, attributes, parameters

Product Attribute	Attribute Value	Product Attribute	Attribute Value
Manufacturer	Maxim Integrated	Package	Tube
Voltage - Output (Min/Fixed)	5V	Output Type	Fixed
Voltage - Input	8V ~ 36V	Operating Temperature	-40°C ~ 85°C (TA)
Tolerance	±0.1%	Noise - 10Hz to 10kHz	2.5µVrms
Temperature Coefficient	7ppm/°C	Noise - 0.1Hz to 10Hz	3µVp-p
Supplier Device Package	8-SOIC	Mounting Type	Surface Mount
Series	-	Current - Supply	3.3mA
Reference Type	Series, Buried Zener	Current - Output	15 mA
Package / Case	8-SOIC (0.154', 3.90mm Width)	Base Product Number	MAX6250

### Parts with Similar Specifications

The three parts on the right have similar specifications to Analog Devices Inc./Maxim Integrated MAX6250BESA

Product Attribute				
Part Number	MAX6250BESA	<b>MAX6250ACPA</b>	<b>MAX6250BCSA</b>	<b>MAX6250AESA+T</b>
Manufacturer	Analog Devices Inc./Maxim Integrated	Analog Devices Inc./Maxim Integrated	Analog Devices Inc./Maxim Integrated	Analog Devices Inc./Maxim Integrated
Operating Temperature	-40°C ~ 85°C (TA)	0°C ~ 70°C (TA)	0°C ~ 70°C (TA)	-40°C ~ 85°C (TA)
Mounting Type	Surface Mount	Through Hole	Surface Mount	Surface Mount
Output Type	Fixed	Fixed	Fixed	Fixed
Supplier Device Package	8-SOIC	8-PDIP	8-SOIC	8-SOIC
Reference Type	Series, Buried Zener	Series, Buried Zener	Series, Buried Zener	Series, Buried Zener
Series	-	-	-	-
Noise - 10Hz to 10kHz	2.5µVrms	2.5µVrms	2.5µVrms	2.5µVrms
Package / Case	8-SOIC (0.154', 3.90mm Width)	8-DIP (0.300", 7.62mm)	8-SOIC (0.154', 3.90mm Width)	8-SOIC (0.154', 3.90mm Width)
Current - Output	15 mA	15 mA	15 mA	15 mA
Voltage - Output (Min/Fixed)	5V	5V	5V	5V
Package	Tube	Tube	Tube	Tape & Reel (TR)
Tolerance	±0.1%	±0.02%	±0.1%	±0.02%
Temperature Coefficient	7ppm/°C	2ppm/°C	5ppm/°C	3ppm/°C
Voltage - Input	8V ~ 36V	8V ~ 36V	8V ~ 36V	8V ~ 36V
Base Product Number	MAX6250	MAX6250	MAX6250	MAX6250
Current - Supply	3.3mA	3.3mA	3.3mA	3.3mA
Noise - 0.1Hz to 10Hz	3µVp-p	3µVp-p	3µVp-p	3µVp-p

### MAX6250BESA Datasheet PDF

Download MAX6250BESA pdf datasheets and Analog Devices Inc./Maxim Integrated documentation for MAX6250BESA - Analog Devices Inc./Maxim Integrated.

#### Datasheets

[MAX6225,41,50.pdf](#)

#### Environmental Information

[Maxim Integrated REACH.pdf](#)

[Maxim Integrated RoHS Cert.pdf](#)

#### Part Numbering Guide

[Part Numbering System.pdf](#)

#### PCN Obsolescence/ EOL

## Application Notes

## Customers Also Interested in

### Recommended Products



#### MAX6250ACPA

Analog Devices Inc./Maxim Integrated  
IC VREF SERIES 0.02% 8DIP



#### MAX6250BCSA

Analog Devices Inc./Maxim Integrated  
IC VREF SERIES 0.1% 8SOIC



#### MAX626CSA+T

Analog Devices Inc./Maxim Integrated  
IC GATE DRVR LOW-SIDE 8SOIC



#### MAX6250BEAP

Analog Devices / Maxim Integrated



#### MAX6250AESA+T

Analog Devices Inc./Maxim Integrated  
IC VREF SERIES 0.02% 8SOIC



#### MAX6250AESA+

Analog Devices Inc./Maxim Integrated  
IC VREF SERIES 0.02% 8SOIC



#### MAX6250BESA+

Analog Devices Inc./Maxim Integrated  
IC VREF SERIES 0.1% 8SOIC



#### MAX6250BCSA+

Analog Devices Inc./Maxim Integrated  
IC VREF SERIES 0.1% 8SOIC



#### MAX6250BESA+T

Analog Devices Inc./Maxim Integrated  
IC VREF SERIES 0.1% 8SOIC



#### MAX626CPA

Analog Devices / Maxim Integrated



#### MAX626CSA

Analog Devices Inc./Maxim Integrated  
MAX626 DUAL POWER MOSFET DRIVER



#### MAX6250AEP

Analog Devices Inc./Maxim Integrated  
IC VREF SERIES 0.02% 8DIP



#### MAX6250BCSA+T

Analog Devices Inc./Maxim Integrated  
IC VREF SERIES 0.1% 8SOIC



#### MAX626ESA+

Analog Devices Inc./Maxim Integrated  
IC GATE DRVR LOW-SIDE 8SOIC



#### MAX626ESA

Analog Devices Inc./Maxim Integrated  
MAX626 DUAL POWER MOSFET DRIVER



#### MAX626

Analog Devices / Maxim Integrated



#### MAX6250AESA

Analog Devices Inc./Maxim Integrated  
IC VREF SERIES 0.02% 8SOIC



#### MAX6250ACSA

Analog Devices Inc./Maxim Integrated  
IC VREF SERIES 0.02% 8SOIC

## Shipment

### Delivery Time

In-stock items can be shipped within 24 hours. Some parts will be arranged for delivery within 1-2 days from the date all items arrive at our warehouse. And Allelco ships order once a day at about 17:00, except Sunday. Once the goods are shipped, the estimated delivery time depends on the shipping methods and Delivery destination. The table below shows are the logistic time for some common countries.

### Delivery Cost

- > Use your express account for shipment if you have one.
  - > Use our account for the shipment. Refer to the table below for the approximate charges.
- (Different time frame / countries / package size has different price.)

### Delivery Method

- > Global Common Shipment by DHL / UPS / FedEx / TNT / EMS / SF we support.
- > Others more shipping ways, please get in touch with your customer manager.

Common Countries Logistic Time Reference

Region	Country	Logistic Time(Day)
America	United States	5
	Brazil	7
Europe	Germany	5
	United Kingdom	4
	Italy	5
Oceania	Australia	6
	New Zealand	7
Asia	India	6
	Japan	7
Middle East	Israel	6

DHL & FedEx Shipment Charges Reference

Shipment charges(KG)	Reference DHL(USD\$)
0.00kg-1.00kg	USD\$60.00
1.00kg-2.00kg	USD\$70.00
2.00kg-3.00kg	USD\$80.00

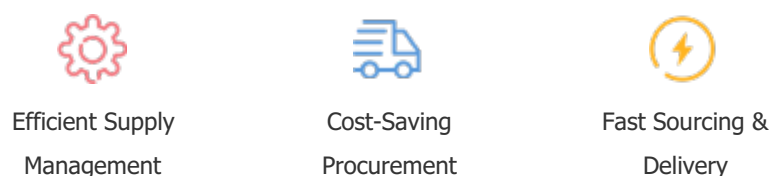
Note: The above table is for reference only. There may have some data bias for the uncontrollable factors. Contact us if you have any questions.

### Payment Support

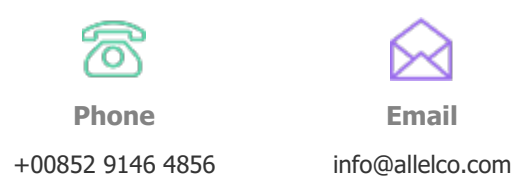
The payment method can be chosen from the methods shown below:  
Wire Transfer (T/T, Bank Transfer), Western Union, Credit card, PayPal.



### Your Faithful Supply Chain Partner -



Contact us if you have any questions.



### Certifications & Memberships



View More