

Image may be representation.
See specifications for product details.



MAX17017GTM+

Manufacturer Part Number	MAX17017GTM+
Manufacturer	Maxim Integrated
Allelco Part Number	32D-MAX17017GTM+
ECAD Model	Request Free CAD Models
Parts Description	IC PWR SUPPLY CONTROLLER 48TQFN
Package	48-WFQFN Exposed Pad
Data sheet	MAX17017.pdf
RoHs Status	ROHS3 Compliant

Get a Quote

MAX17017GTM+ - Analog Devices Inc./Maxim Integrated. New Original in Stock. Download Linear Technology MAX17017GTM+ datasheet/specifications on AllelcoElec.com.
Request a quote for MAX17017GTM+, please send us email: info@allelco.com

Specifications

MAX17017GTM+ Tech Specifications
MAX17017GTM+ - Analog Devices Inc./Maxim Integrated technical specifications, attributes, parameters

Product Attribute	Attribute Value	Product Attribute	Attribute Value
Manufacturer	Maxim Integrated	Package	Tube
Voltage - Supply	-	Operating Temperature	-40°C ~ 105°C
Voltage - Input	5.5V ~ 28V	Mounting Type	Surface Mount
Supplier Device Package	48-TQFN (6x6)	Base Product Number	MAX17017
Series	-	Applications	Power Supply Controller
Package / Case	48-WFQFN Exposed Pad		

Parts with Similar Specifications

The three parts on the right have similar specifications to Analog Devices Inc./Maxim Integrated MAX17017GTM+

Product Attribute				
Part Number	MAX17017GTM+	MAX17017GTM+T	MAX17018BATL/V+T	MAX17015AETP+
Manufacturer	Analog Devices Inc./Maxim Integrated	Analog Devices Inc./Maxim Integrated	Analog Devices / Maxim Integrated	Analog Devices Inc./Maxim Integrated
Voltage - Supply	-	-	-	-
Package	Tube	Tape & Reel (TR)	-	Tray
Applications	Power Supply Controller	Power Supply Controller	-	-
Series	-	-	-	-
Package / Case	48-WFQFN Exposed Pad	48-WFQFN Exposed Pad	-	20-WFQFN Exposed Pad
Operating Temperature	-40°C ~ 105°C	-40°C ~ 105°C	-	-40°C ~ 85°C (TA)
Voltage - Input	5.5V ~ 28V	5.5V ~ 28V	-	-
Mounting Type	Surface Mount	Surface Mount	-	Surface Mount
Base Product Number	MAX17017	MAX17017	-	MAX17015
Supplier Device Package	48-TQFN (6x6)	48-TQFN (6x6)	-	20-TQFN (4x4)

MAX17017GTM+ Datasheet PDF

Download MAX17017GTM+ pdf datasheets and Analog Devices Inc./Maxim Integrated documentation for MAX17017GTM+ - Analog Devices Inc./Maxim Integrated.

Datasheets

[MAX17017.pdf](#)

Environmental Information

[Maxim Integrated REACH.pdf](#)

[Maxim Integrated RoHS Cert.pdf](#)

Part Numbering Guide

[Part Numbering System.pdf](#)

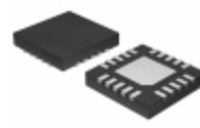
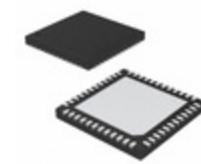
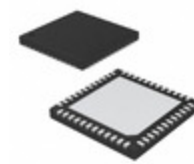
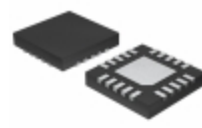
Application Notes

[Power-Supply Solutions for Xilinx FPGAs.pdf](#)

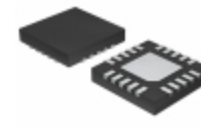
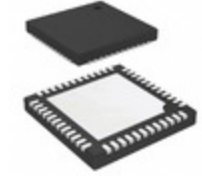
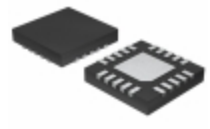
Customers Also Interested in

Recommended Products

MAX17018BATL/V+T	MAX17015AETP+	MAX1701EEE	MAX17016ETL+T	MAX17014AETM+T	MAX17018CAGL/VY+
Analog Devices / Maxim Integrated	Analog Devices Inc./Maxim Integrated	Analog Devices Inc./Maxim Integrated	Analog Devices Inc./Maxim Integrated	Analog Devices Inc./Maxim Integrated	Analog Devices Inc./Maxim Integrated
	IC BATT CHG MULTI-CHEM 20TQFN	IC REG BOOST ADJ 1.1A 16QSOP	IC REG BUCK ADJUSTABLE 40TQFN	IC PWR SUPPLY MULT-OUTP 48TQFN	36V, AUTOMOTIVE DUAL STEP-DOWN C

**MAX17018CATL/V+T**Analog Devices Inc./Maxim Integrated
IC INTEGRATED CIRCUIT**MAX17018CATL/VY+T**

Analog Devices / Maxim Integrated

MAX17015BETP+Analog Devices Inc./Maxim Integrated
IC BATT CHG MULTI-CHEM 20TQFN**MAX17014ETM+**Analog Devices Inc./Maxim Integrated
IC PWR SUPPLY MULT-OUTPUT 48TQFN**MAX17017GTM+T**Analog Devices Inc./Maxim Integrated
IC PWR SUPPLY CONTROLLER 48TQFN**MAX17015BETP+T**Analog Devices Inc./Maxim Integrated
IC BATT CHG MULTI-CHEM 20TQFN**MAX17015ETP+T**Analog Devices Inc./Maxim Integrated
IC BATT CHG MULTI-CHEM 20TQFN**MAX17017ETM**

Analog Devices / Maxim Integrated

MAX17019ATM+Analog Devices Inc./Maxim Integrated
IC VOLT CTRL QUAD OUT 48TQFN**MAX17017GTM**

Analog Devices / Maxim Integrated

MAX17015ETP+Analog Devices Inc./Maxim Integrated
IC BATT CHG MULTI-CHEM 20TQFN**MAX1701EEE+T**Analog Devices Inc./Maxim Integrated
IC REG BOOST ADJ 1.1A 16QSOP

Shipment

Delivery Time

In-stock items can be shipped within 24 hours. Some parts will be arranged for delivery within 1-2 days from the date all items arrive at our warehouse. And Allelco ships order once a day at about 17:00, except Sunday. Once the goods are shipped, the estimated delivery time depends on the shipping methods and Delivery destination. The table below shows are the logistic time for some common countries.

Delivery Cost

> Use your express account for shipment if you have one.

> Use our account for the shipment. Refer to the table below for the approximate charges.

(Different time frame / countries / package size has different price.)

Delivery Method

> Global Common Shipment by DHL / UPS / FedEx / TNT / EMS / SF we support.

> Others more shipping ways, please get in touch with your customer manager.

Common Countries Logistic Time Reference

Region	Country	Logistic Time(Day)
America	United States	5
	Brazil	7
Europe	Germany	5
	United Kingdom	4
	Italy	5
Oceania	Australia	6
	New Zealand	7
Asia	India	6
	Japan	7
Middle East	Israel	6

DHL & FedEx Shipment Charges Reference

Shipment charges(KG)	Reference DHL(USD\$)
0.00kg-1.00kg	USD\$60.00
1.00kg-2.00kg	USD\$70.00
2.00kg-3.00kg	USD\$80.00

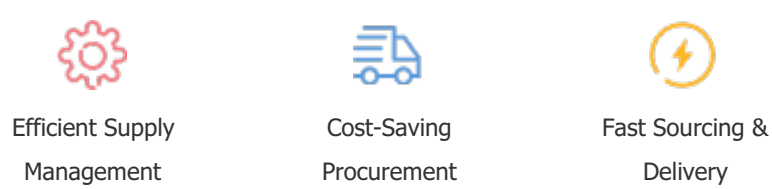
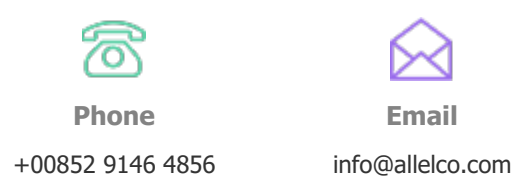
Note: The above table is for reference only. There may have some data bias for the uncontrollable factors.
Contact us if you have any questions.

Payment Support

The payment method can be chosen from the methods shown below:
Wire Transfer (T/T, Bank Transfer), Western Union, Credit card, PayPal.



Your Faithful Supply Chain Partner -

**Contact us if you have any questions.**

Certifications & Memberships

[View More](#)

Contact us

Address: Flat/Rm C 13/F Harvard Commercial Building 105-111 Thomson Road, Wan Chai, Hong Kong
Phone: +00852 9146 4856
Fax: +00852 3010 8510
Email: info@Allelco.com