



Image may be representation.
See specifications for product details.



MAX4373TEUA+T

Manufacturer Part Number	MAX4373TEUA+T
Manufacturer	Maxim Integrated
Allelco Part Number	32D-MAX4373TEUA+T
ECAD Model	Request Free CAD Models
Parts Description	IC AMP COMP REF 8UMAX
Package	8-TSSOP, 8-MSOP (0.118", 3.00mm Width)
Data sheet	MAX4373/74/75.pdf
RoHs Status	ROHS3 Compliant

Get a Quote

MAX4373TEUA+T - Analog Devices Inc./Maxim Integrated.New Original in Stock. Download Linear Technology MAX4373TEUA+T datasheet/specifications on AllelcoElec.com.
Request a quote for MAX4373TEUA+T, please send us email: info@allelco.com

Specifications

MAX4373TEUA+T Tech Specifications
MAX4373TEUA+T - Analog Devices Inc./Maxim Integrated technical specifications, attributes, parameters

Product Attribute	Attribute Value	Product Attribute	Attribute Value
Manufacturer	Maxim Integrated	Package	Tape & Reel (TR)
Type	Amplifier, Comparator, Reference	Mounting Type	Surface Mount
Supplier Device Package	8-uMAX/uSOP	Base Product Number	MAX4373
Series	-	Applications	Current Sensing, Power Management
Package / Case	8-TSSOP, 8-MSOP (0.118", 3.00mm Width)		

Parts with Similar Specifications

The three parts on the right have similar specifications to Analog Devices Inc./Maxim Integrated MAX4373TEUA+T

Product Attribute				
Part Number	MAX4373TEUA+T	MAX4373TEUA	MAX4373FEUA	MAX4373HESA+T
Manufacturer	Analog Devices Inc./Maxim Integrated	Analog Devices Inc./Maxim Integrated	Analog Devices Inc./Maxim Integrated	Analog Devices Inc./Maxim Integrated
Package / Case	8-TSSOP, 8-MSOP (0.118", 3.00mm Width)	8-TSSOP, 8-MSOP (0.118", 3.00mm Width)	8-TSSOP, 8-MSOP (0.118", 3.00mm Width)	8-SOIC (0.154", 3.90mm Width)
Package	Tape & Reel (TR)	Tube	Tube	Tape & Reel (TR)
Base Product Number	MAX4373	MAX4373	MAX4373	MAX4373
Type	Amplifier, Comparator, Reference	Amplifier, Comparator, Reference	Amplifier, Comparator, Reference	Amplifier, Comparator, Reference
Applications	Current Sensing, Power Management	Current Sensing, Power Management	Current Sensing, Power Management	Current Sensing, Power Management
Mounting Type	Surface Mount	Surface Mount	Surface Mount	Surface Mount
Series	-	-	-	-
Supplier Device Package	8-uMAX/uSOP	8-uMAX/uSOP	8-uMAX/uSOP	8-SOIC

MAX4373TEUA+T Datasheet PDF

Download MAX4373TEUA+T pdf datasheets and Analog Devices Inc./Maxim Integrated documentation for MAX4373TEUA+T - Analog Devices Inc./Maxim Integrated.

Datasheets

[MAX4373/74/75.pdf](#)

Environmental Information

[Maxim Integrated REACH.pdf](#)

[Maxim Integrated RoHS Cert.pdf](#)

Part Numbering Guide

[Part Numbering System.pdf](#)

Application Notes

[DC Error Budget Calculator Simplifies Selection of.pdf](#)

[High-Side Current Amplifier Forms 28V Circuit Brea.pdf](#)

[How to Accurately Calculate Overcurrent in High-Si.pdf](#)

[Simple, Latched Overcurrent Fault Detector Has Fas.pdf](#)

Customers Also Interested in

Recommended Products



MAX4373TEUA

Analog Devices Inc./Maxim Integrated
IC AMP COMP REF 8UMAX



MAX4373FEUA

Analog Devices Inc./Maxim Integrated
IC AMP COMP REF 8UMAX



MAX4373HESA+T

Analog Devices Inc./Maxim Integrated
IC AMP COMP REF 8SOIC



MAX4374FEUB

Analog Devices Inc./Maxim Integrated
IC AMP COMP REF 10UMAX



MAX4373FEUA+T

Analog Devices Inc./Maxim Integrated
IC AMP COMP REF 8UMAX



MAX4374TEUB

Analog Devices Inc./Maxim Integrated
IC AMP COMP REF 10UMAX

**MAX4374FEUB+**Analog Devices Inc./Maxim Integrated
IC AMP COMP REF 10UMAX**MAX4374TEUB+**Analog Devices Inc./Maxim Integrated
IC AMP COMP REF 10UMAX**MAX4373HEUA+T**Analog Devices Inc./Maxim Integrated
IC AMP COMP REF 8UMAX**MAX4374HEUB**Analog Devices Inc./Maxim Integrated
IC AMP COMP REF 10UMAX**MAX4373TESA+T**Analog Devices Inc./Maxim Integrated
IC AMP COMP REF 8SOIC**MAX4373HEUA+**Analog Devices Inc./Maxim Integrated
IC AMP COMP REF 8UMAX**MAX4373FEU+T**

Analog Devices / Maxim Integrated

**MAX4373TEUA+**Analog Devices Inc./Maxim Integrated
IC AMP COMP REF 8UMAX**MAX4374TEUB+T**Analog Devices Inc./Maxim Integrated
IC AMP COMP REF 10UMAX**MAX4374FESD**Analog Devices Inc./Maxim Integrated
IC AMP COMP REF 14SOIC**MAX4373FEUA+**Analog Devices Inc./Maxim Integrated
IC AMP COMP REF 8UMAX**MAX4374HEUB+**Analog Devices Inc./Maxim Integrated
IC AMP COMP REF 10UMAX

Shipment

Delivery Time

In-stock items can be shipped within 24 hours. Some parts will be arranged for delivery within 1-2 days from the date all items arrive at our warehouse. And Allelco ships order once a day at about 17:00, except Sunday. Once the goods are shipped, the estimated delivery time depends on the shipping methods and Delivery destination. The table below shows are the logistic time for some common countries.

Delivery Cost

> Use your express account for shipment if you have one.

> Use our account for the shipment. Refer to the table below for the approximate charges.

(Different time frame / countries / package size has different price.)

Delivery Method

> Global Common Shipment by DHL / UPS / FedEx / TNT / EMS / SF we support.

> Others more shipping ways, please get in touch with your customer manager.

Common Countries Logistic Time Reference

Region	Country	Logistic Time(Day)
America	United States	5
	Brazil	7
Europe	Germany	5
	United Kingdom	4
	Italy	5
Oceania	Australia	6
	New Zealand	7
Asia	India	6
	Japan	7
Middle East	Israel	6

DHL & FedEx Shipment Charges Reference

Shipment charges(KG)	Reference DHL(USD\$)
0.00kg-1.00kg	USD\$60.00
1.00kg-2.00kg	USD\$70.00
2.00kg-3.00kg	USD\$80.00

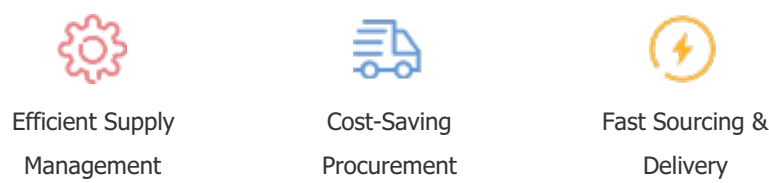
Note: The above table is for reference only. There may have some data bias for the uncontrollable factors.
Contact us if you have any questions.

Payment Support

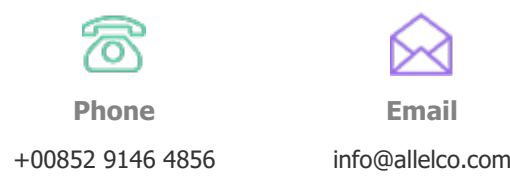
The payment method can be chosen from the methods shown below:
Wire Transfer (T/T, Bank Transfer), Western Union, Credit card, PayPal.



Your Faithful Supply Chain Partner -



Contact us if you have any questions.



Certifications & Memberships



[View More](#)



Contact us

Address: Flat/Rm C 13/F Harvard Commercial Building 105-111 Thomson Road, Wan Chai, Hong Kong

Phone: +00852 9146 4856

Fax: +00852 3010 8510

Email: info@Allelco.com

Copyright © 2012-2023 AllelcoElec.com. All rights reserved.