



Image may be representation.
See specifications for product details.



ADG704BRM

Manufacturer Part Number	ADG704BRM
Manufacturer	Analog Devices, Inc.
Allelco Part Number	32D-ADG704BRM
ECAD Model	PCB Symbol, Footprint & 3D Model
Parts Description	IC SWITCH SP4T X 1 4OHM 10MSOP
Package	10-TFSOP, 10-MSOP (0.118', 3.00mm Width)
Data sheet	Cylindrical Battery Holders.pdf

Get a Quote

ADG704BRM - Analog Devices Inc..New Original in Stock. Download Linear Technology ADG704BRM datasheet/specifications on AllelcoElec.com.
Request a quote for ADG704BRM, please send us email: info@allelco.com

Specifications

ADG704BRM Tech Specifications
ADG704BRM - Analog Devices Inc. technical specifications, attributes, parameters

Product Attribute	Attribute Value	Product Attribute	Attribute Value
Manufacturer	Analog Devices, Inc.	Number of Circuits	1
Voltage - Supply, Single (V+)	1.8V ~ 5V	Multiplexer/Demultiplexer Circuit	4:1
Voltage - Supply, Dual (V±)	-	Mounting Type	Surface Mount
Switch Time (Ton, Toff) (Max)	14ns, 6ns (Typ)	Current - Leakage (IS(off)) (Max)	100pA
Switch Circuit	SP4T	Crosstalk	-82dB @ 1MHz
Supplier Device Package	10-MSOP	Charge Injection	3pC
Series	-	Channel-to-Channel Matching (ΔRon)	-
Package / Case	10-TFSOP, 10-MSOP (0.118', 3.00mm Width)	Channel Capacitance (CS(off), CD(off))	9pF, 37pF
Package	Tube	Base Product Number	ADG704
Operating Temperature	-40°C ~ 85°C (TA)	-3db Bandwidth	200MHz
On-State Resistance (Max)	40hm		

Parts with Similar Specifications

The three parts on the right have similar specifications to Analog Devices Inc. ADG704BRM

Product Attribute				
Part Number	ADG704BRM	ADG706BRU-REEL7	ADG706BRUZ	ADG704BRM-REEL7
Manufacturer	Analog Devices Inc.	Analog Devices Inc.	Analog Devices Inc.	Analog Devices Inc.
Crosstalk	-82dB @ 1MHz	-80dB @ 1MHz	-80dB @ 1MHz	-82dB @ 1MHz
Operating Temperature	-40°C ~ 85°C (TA)	-40°C ~ 85°C (TA)	-40°C ~ 85°C (TA)	-40°C ~ 85°C (TA)
Switch Time (Ton, Toff) (Max)	14ns, 6ns (Typ)	32ns, 16ns (Typ)	32ns, 16ns (Typ)	14ns, 6ns (Typ)
On-State Resistance (Max)	40hm	4.50hm	4.50hm	40hm
Voltage - Supply, Dual (V±)	-	±2.5V	±2.5V	-
-3db Bandwidth	200MHz	25MHz	25MHz	200MHz
Series	-	-	-	-
Package / Case	10-TFSOP, 10-MSOP (0.118', 3.00mm Width)	28-TSSOP (0.173', 4.40mm Width)	28-TSSOP (0.173', 4.40mm Width)	10-TFSOP, 10-MSOP (0.118", 3.00mm Width)
Channel-to-Channel Matching (ΔRon)	-	-	-	-
Charge Injection	3pC	8pC	8pC	3pC
Package	Tube	Tape & Reel (TR)	Tube	Tape & Reel (TR)
Supplier Device Package	10-MSOP	28-TSSOP	28-TSSOP	10-MSOP
Multiplexer/Demultiplexer Circuit	4:1	16:1	16:1	4:1
Base Product Number	ADG704	ADG706	ADG706	ADG704
Voltage - Supply, Single (V+)	1.8V ~ 5V	1.8V ~ 5.5V	1.8V ~ 5.5V	1.8V ~ 5V
Mounting Type	Surface Mount	Surface Mount	Surface Mount	Surface Mount
Channel Capacitance (CS(off), CD(off))	9pF, 37pF	13pF, 180pF	13pF, 180pF	9pF, 37pF
Number of Circuits	1	1	1	1
Switch Circuit	SP4T	-	-	SP4T
Current - Leakage (IS(off)) (Max)	100pA	100pA	100pA	100pA

ADG704BRM Datasheet PDF

Download ADG704BRM pdf datasheets and Analog Devices Inc. documentation for ADG704BRM - Analog Devices Inc..

Datasheets

[Cylindrical Battery Holders.pdf](#)

PCN Obsolescence/ EOL

[Cylindrical Battery Holders.pdf](#)



PKG Conversion/Assembly Site REV
30/Oct/2017.pdf

Customers Also Interested in

Recommended Products



ADG706BRU-REEL7
Analog Devices Inc.
IC MUX 16:1 4.5OHM 28TSSOP



ADG706BRUZ
Analog Devices Inc.
IC MUX 16:1 4.5OHM 28TSSOP



ADG704BRM-REEL7
Analog Devices Inc.
IC SWITCH SP4T X 1 4OHM 10MSOP



ADG704BRMZ
Analog Devices Inc.
IC SWITCH SP4T X 1 4OHM 10MSOP



ADG704BRM(S9B)
ADI (Analog Devices, Inc.)



ADG702BRMZ
Analog Devices Inc.
IC SWITCH SPST-NC X 1 3OHM 8MSOP



ADG702BRTZ-REELT
XX



ADG702LBRTZ-REEL7
Analog Devices Inc.
IC SWITCH SPST-NCX1 3OHM SOT23-6



ADG704BRM-REEL
Analog Devices Inc.
IC SWITCH SP4T X 1 4OHM 10MSOP



ADG702LBRMZ
Analog Devices Inc.
IC SWITCH SPST-NC X 1 3OHM 8MSOP



ADG702BRT-REEL7
Analog Devices Inc.
IC SWITCH SPST-NCX1 3OHM SOT23-6



ADG702BRMZ-REEL7
Analog Devices Inc.
IC SWITCH SPST-NC X 1 3OHM 8MSOP



ADG702LBRJZ-REEL7
Analog Devices Inc.
IC SWITCH SPST-NCX1 3OHM SOT23-5



ADG702BRTZ
ADI (Analog Devices, Inc.)



ADG704BRMZ-REEL
Analog Devices Inc.
IC SWITCH SP4T X 1 4OHM 10MSOP



ADG702BRTZ-REEL7
Analog Devices Inc.
IC SWITCH SPST-NCX1 3OHM SOT23-6



ADG706BRU
Analog Devices Inc.
IC MUX 16:1 4.5OHM 28TSSOP



ADG704BRMZ-REEL7
Analog Devices Inc.
IC SWITCH SP4T X 1 4OHM 10MSOP

Shipment

Delivery Time

In-stock items can be shipped within 24 hours. Some parts will be arranged for delivery within 1-2 days from the date all items arrive at our warehouse. And Allelco ships order once a day at about 17:00, except Sunday. Once the goods are shipped, the estimated delivery time depends on the shipping methods and Delivery destination. The table below shows are the logistic time for some common countries.

Delivery Cost

- > Use your express account for shipment if you have one.
 - > Use our account for the shipment. Refer to the table below for the approximate charges.
- (Different time frame / countries / package size has different price.)

Delivery Method

- > Global Common Shipment by DHL / UPS / FedEx / TNT / EMS / SF we support.
- > Others more shipping ways, please get in touch with your customer manager.

Common Countries Logistic Time Reference

Region	Country	Logistic Time(Day)
America	United States	5
	Brazil	7
Europe	Germany	5
	United Kingdom	4
	Italy	5
Oceania	Australia	6
	New Zealand	7
Asia	India	6
	Japan	7
Middle East	Israel	6

DHL & FedEx Shipment Charges Reference

Shipment charges(KG)	Reference DHL(USD\$)
0.00kg-1.00kg	USD\$60.00
1.00kg-2.00kg	USD\$70.00
2.00kg-3.00kg	USD\$80.00

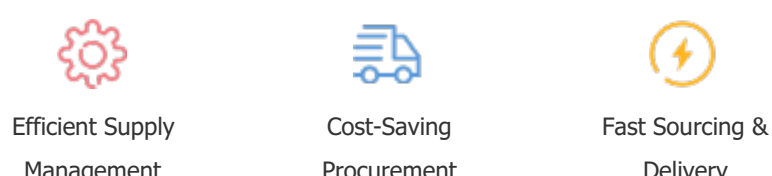
Note: The above table is for reference only. There may have some data bias for the uncontrollable factors.
Contact us if you have any questions.

Payment Support

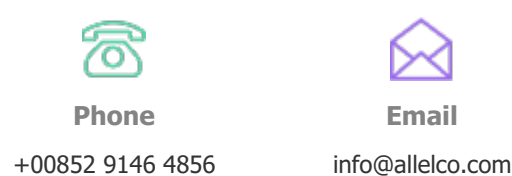
The payment method can be chosen from the methods shown below:
Wire Transfer (T/T, Bank Transfer), Western Union, Credit card, PayPal.



Your Faithful Supply Chain Partner -



Contact us if you have any questions.



Certifications & Memberships



View More

Contact us

Address: Flat/Rm C 13/F Harvard Commercial Building 105-111 Thomson Road, Wan Chai, Hong Kong
Phone: +00852 9146 4856
Fax: +00852 3010 8510
Email: info@Allelco.com