

Image may be representation.  
See specifications for product details.



## ADG411BR

Manufacturer Part Number	<b>ADG411BR</b>
Manufacturer	<b>Analog Devices, Inc.</b>
Allelco Part Number	32D-ADG411BR
ECAD Model	Request Free CAD Models
Parts Description	IC SWITCH SPST-NCX4 350HM 16SOIC
Package	16-SOIC (0.154", 3.90mm Width)
Data sheet	<b>Cylindrical Battery Holders.pdf</b>

**Get a Quote**

ADG411BR - Analog Devices Inc..New Original in Stock. Download Linear Technology ADG411BR datasheet/specifications on AllelcoElec.com.  
Request a quote for ADG411BR, please send us email: [info@allelco.com](mailto:info@allelco.com)

## Specifications

ADG411BR Tech Specifications

ADG411BR - Analog Devices Inc. technical specifications, attributes, parameters

Product Attribute	Attribute Value	Product Attribute	Attribute Value
Manufacturer	Analog Devices, Inc.	Number of Circuits	4
Voltage - Supply, Single (V+)	12V	Multiplexer/Demultiplexer Circuit	1:1
Voltage - Supply, Dual (V±)	±15V	Mounting Type	Surface Mount
Switch Time (Ton, Toff) (Max)	175ns, 145ns	Current - Leakage (IS(off)) (Max)	250pA
Switch Circuit	SPST - NC	Crosstalk	-85dB @ 1MHz
Supplier Device Package	16-SOIC	Charge Injection	5pC
Series	-	Channel-to-Channel Matching (ΔRon)	-
Package / Case	16-SOIC (0.154", 3.90mm Width)	Channel Capacitance (CS(off), CD(off))	9pF, 9pF
Package	Tube	Base Product Number	ADG411
Operating Temperature	-40°C ~ 85°C (TA)	-3db Bandwidth	-
On-State Resistance (Max)	350hm		

## Parts with Similar Specifications

The three parts on the right have similar specifications to Analog Devices Inc. ADG411BR

Product Attribute				
Part Number	ADG411BR	<b>ADG409BRUZ</b>	<b>ADG411BR-REEL7</b>	<b>ADG411BRZ-REEL</b>
Manufacturer	Analog Devices Inc.	Analog Devices Inc.	Analog Devices Inc.	Analog Devices Inc.
Voltage - Supply, Single (V+)	12V	12V	12V	12V
Multiplexer/Demultiplexer Circuit	1:1	4:1	1:1	1:1
Charge Injection	5pC	20pC	5pC	5pC
Mounting Type	Surface Mount	Surface Mount	Surface Mount	Surface Mount
-3db Bandwidth	-	-	-	-
Channel Capacitance (CS(off), CD(off))	9pF, 9pF	11pF, 20pF	9pF, 9pF	9pF, 9pF
Base Product Number	ADG411	ADG409	ADG411	ADG411
Crosstalk	-85dB @ 1MHz	-85dB @ 100kHz	-85dB @ 1MHz	-85dB @ 1MHz
Channel-to-Channel Matching (ΔRon)	-	150hm (Max)	-	-
Operating Temperature	-40°C ~ 85°C (TA)	-40°C ~ 85°C (TA)	-40°C ~ 85°C (TA)	-40°C ~ 85°C (TA)
Switch Time (Ton, Toff) (Max)	175ns, 145ns	-	175ns, 145ns	175ns, 145ns
Package	Tube	Tube	Tape & Reel (TR)	Tape & Reel (TR)
On-State Resistance (Max)	350hm	1000hm	350hm	350hm
Supplier Device Package	16-SOIC	16-TSSOP	16-SOIC	16-SOIC
Series	-	-	-	-
Current - Leakage (IS(off)) (Max)	250pA	500pA	250pA	250pA
Number of Circuits	4	2	4	4
Voltage - Supply, Dual (V±)	±15V	±15V	±15V	±15V
Package / Case	16-SOIC (0.154", 3.90mm Width)	16-TSSOP (0.173", 4.40mm Width)	16-SOIC (0.154", 3.90mm Width)	16-SOIC (0.154", 3.90mm Width)
Switch Circuit	SPST - NC	SP4T	SPST - NC	SPST - NC

## ADG411BR Datasheet PDF


Download ADG411BR pdf datasheets and Analog Devices Inc. documentation for ADG411BR - Analog Devices Inc..

### Datasheets

[Cylindrical Battery Holders.pdf](#)

### PCN Obsolescence/ EOL

[Cylindrical Battery Holders.pdf](#)

 2.73KHz.pdf

## Customers Also Interested in

### Recommended Products



**ADG409BRUZ**  
Analog Devices Inc.  
IC SWITCH SP4TX2 100OHM  
16TSSOP



**ADG411BR-REEL7**  
Analog Devices Inc.  
IC SWITCH SPST-NCX4 350HM  
16SOIC



**ADG411BRZ-REEL**  
Analog Devices Inc.  
IC SWITCH SPST-NCX4 350HM  
16SOIC



**ADG409BRZ-REEL7**  
Analog Devices Inc.  
IC SWITCH SP4T X 2 100OHM  
16SOIC



**ADG409TQ**  
ADI (Analog Devices, Inc.)



**ADG411BN**  
Analog Devices Inc.  
IC SWITCH SPST-NCX4 350HM  
16DIP



**ADG409BRUZ-REEL7**  
Analog Devices Inc.  
IC SWITCH SP4TX2 100OHM  
16TSSOP



**ADG411BRUZ-REEL**  
Analog Devices Inc.  
IC SW SPST-NCX4 350HM 16TSSOP  
16SOIC



**ADG411BRUZ**  
Analog Devices Inc.  
IC SW SPST-NCX4 350HM 16TSSOP  
16SOIC



**ADG409BRZ-REEL**  
Analog Devices Inc.  
IC SWITCH SP4T X 2 100OHM  
16SOIC



**ADG411BNZ**  
Analog Devices Inc.  
IC SWITCH SPST-NCX4 350HM  
16DIP



**ADG409BRZ**  
Analog Devices Inc.  
IC SWITCH SP4T X 2 100OHM  
16SOIC



**ADG412BN**  
Analog Devices Inc.  
IC SWITCH SPST-NOX4 350HM  
16DIP



**ADG411BRZ-REEL7**  
Analog Devices Inc.  
IC SWITCH SPST-NCX4 350HM  
16SOIC



**ADG409TQ/883B**  
ADI (Analog Devices, Inc.)



**ADG412BNZ**  
Analog Devices Inc.  
IC SWITCH SPST-NOX4 350HM  
16DIP



**ADG411BRZ**  
Analog Devices Inc.  
IC SWITCH SPST-NCX4 350HM  
16SOIC



**ADG411BRUZ-REEL7**  
Analog Devices Inc.  
IC SW SPST-NCX4 350HM 16TSSOP  
16SOIC

## Shipment

### Delivery Time

In-stock items can be shipped within 24 hours. Some parts will be arranged for delivery within 1-2 days from the date all items arrive at our warehouse. And Allelco ships order once a day at about 17:00, except Sunday. Once the goods are shipped, the estimated delivery time depends on the shipping methods and Delivery destination. The table below shows are the logistic time for some common countries.

### Delivery Cost

- > Use your express account for shipment if you have one.
  - > Use our account for the shipment. Refer to the table below for the approximate charges.
- (Different time frame / countries / package size has different price.)

### Delivery Method

- > Global Common Shipment by DHL / UPS / FedEx / TNT / EMS / SF we support.
- > Others more shipping ways, please get in touch with your customer manager.

Common Countries Logistic Time Reference

Region	Country	Logistic Time(Day)
America	United States	5
	Brazil	7
Europe	Germany	5
	United Kingdom	4
	Italy	5
Oceania	Australia	6
	New Zealand	7
Asia	India	6
	Japan	7
Middle East	Israel	6

DHL & FedEx Shipment Charges Reference

Shipment charges(KG)	Reference DHL(USD\$)
0.00kg-1.00kg	USD\$60.00
1.00kg-2.00kg	USD\$70.00
2.00kg-3.00kg	USD\$80.00

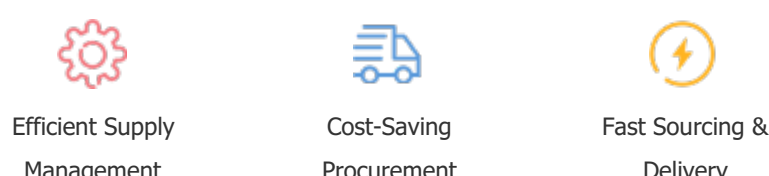
Note: The above table is for reference only. There may have some data bias for the uncontrollable factors.  
Contact us if you have any questions.

### Payment Support

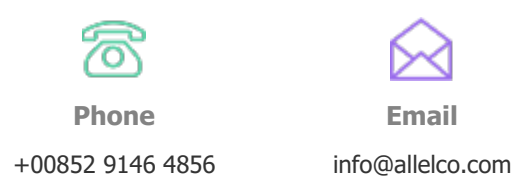
The payment method can be chosen from the methods shown below:  
Wire Transfer (T/T, Bank Transfer), Western Union, Credit card,  
PayPal.



### Your Faithful Supply Chain Partner -



Contact us if you have any questions.



### Certifications & Memberships



[View More](#)

### Contact us

Address: Flat/Rm C 13/F Harvard Commercial Building 105-111 Thomson Road, Wan Chai, Hong Kong  
Phone: +00852 9146 4856  
Fax: +00852 3010 8510  
Email: info@allelco.com