



Image may be representation.
See specifications for product details.



STGF15M65DF2

Manufacturer Part Number	STGF15M65DF2
Manufacturer	STMicroelectronics
Allelco Part Number	32D-STGF15M65DF2
ECAD Model	PCB Symbol, Footprint & 3D Model
Parts Description	TRENCH GATE FIELD-STOP IGBT M SE
Package	TO-220-3 Full Pack
Data sheet	STGF15M65DF2 Datasheet.pdf
RoHs Status	ROHS3 Compliant

Get a Quote

STGF15M65DF2 - STMicroelectronics. New Original in Stock. Download Linear Technology STGF15M65DF2 datasheet/specifications on AllelcoElec.com. Request a quote for STGF15M65DF2, please send us email: info@allelco.com

Specifications

STGF15M65DF2 Tech Specifications

STGF15M65DF2 - STMicroelectronics technical specifications, attributes, parameters

Product Attribute	Attribute Value	Product Attribute	Attribute Value
Manufacturer	STMicroelectronics	Package / Case	TO-220-3 Full Pack
Voltage - Collector Emitter Breakdown (Max)	650 V	Package	Tube
Vce(on) (Max) @ Vge, Ic	2V @ 15V, 15A	Operating Temperature	-55°C ~ 175°C (TJ)
Test Condition	400V, 15A, 120hm, 15V	Mounting Type	Through Hole
Td (on/off) @ 25°C	24ns/93ns	Input Type	Standard
Switching Energy	90µJ (on), 450µJ (off)	IGBT Type	Trench Field Stop
Supplier Device Package	TO-220FP	Gate Charge	45 nC
Series	-	Current - Collector Pulsed (Icm)	60 A
Reverse Recovery Time (trr)	142 ns	Current - Collector (Ic) (Max)	30 A
Power - Max	31 W	Base Product Number	STGF15

Parts with Similar Specifications

The three parts on the right have similar specifications to STMicroelectronics STGF15M65DF2

Product Attribute				
Part Number	STGF15M65DF2	STGF10M65DF2	STGF20M65DF2	STGF19NC60WD
Manufacturer	STMicroelectronics	STMicroelectronics	STMicroelectronics	STMicroelectronics
Input Type	Standard	Standard	Standard	Standard
Package	Tube	Tube	Tube	Tube
Switching Energy	90µJ (on), 450µJ (off)	120µJ (on), 270µJ (off)	140µJ (on), 560µJ (off)	81µJ (on), 125µJ (off)
Package / Case	TO-220-3 Full Pack	TO-220-3 Full Pack	TO-220-3 Full Pack	TO-220-3 Full Pack
Current - Collector (Ic) (Max)	30 A	20 A	40 A	14 A
Operating Temperature	-55°C ~ 175°C (TJ)	-55°C ~ 175°C (TJ)	-55°C ~ 175°C (TJ)	-55°C ~ 150°C (TJ)
Supplier Device Package	TO-220FP	TO-220FP	TO-220FP	TO-220FP
Current - Collector Pulsed (Icm)	60 A	40 A	80 A	-
Test Condition	400V, 15A, 120hm, 15V	400V, 10A, 220hm, 15V	400V, 20A, 120hm, 15V	390V, 12A, 100hm, 15V
Base Product Number	STGF15	STGF10	STGF20	STGF19
Series	-	M	M	PowerMESH™
Power - Max	31 W	30 W	32.6 W	32 W
Voltage - Collector Emitter Breakdown (Max)	650 V	650 V	650 V	600 V
Vce(on) (Max) @ Vge, Ic	2V @ 15V, 15A	2V @ 15V, 10A	2V @ 15V, 20A	2.5V @ 15V, 12A
IGBT Type	Trench Field Stop	Trench Field Stop	Trench Field Stop	-
Td (on/off) @ 25°C	24ns/93ns	19ns/91ns	26ns/108ns	25ns/90ns
Reverse Recovery Time (trr)	142 ns	96 ns	166 ns	31 ns
Mounting Type	Through Hole	Through Hole	Through Hole	Through Hole
Gate Charge	45 nC	28 nC	63 nC	53 nC

STGF15M65DF2 Datasheet PDF

Download STGF15M65DF2 pdf datasheets and STMicroelectronics documentation for STGF15M65DF2 - STMicroelectronics.

Datasheets

STGF15M65DF2 Datasheet.pdf

Customers Also Interested in

Recommended Products

**STGF10M65DF2**STMicroelectronics
IGBT TRENCH 650V 20A TO220FP**STGF20M65DF2**STMicroelectronics
IGBT TRENCH 650V 40A TO220FP**STGF19NC60WD**STMicroelectronics
IGBT 600V 14A 32W TO220FP**STGF20H60DF**STMicroelectronics
IGBT 600V 40A 37W TO220FP**STGF19NC60KD**STMicroelectronics
IGBT 600V 16A 32W TO220FP**STGE50NC60WD**STMicroelectronics
IGBT MOD 600V 100A 260W ISOTOP**STGF10NC60KD**STMicroelectronics
IGBT 600V 9A 25W TO220FP**STGE50NC60VD**STMicroelectronics
IGBT MODULE 600V 90A 260W ISOTOP**STGF19NC60KD MOS**

STMicroelectronics

**STGF10NB60SD**STMicroelectronics
IGBT 600V 23A 25W TO220FP**STGF19NC60HD**STMicroelectronics
IGBT 600V 16A 32W TO220FP**STGF10H60DF**STMicroelectronics
IGBT 600V 20A 30W TO220FP**STGF3NC120HD**STMicroelectronics
IGBT 1200V 6A 25W TO220FP**STGF14NC60KD**STMicroelectronics
IGBT 600V 11A 28W TO220FP**STGF15H60DF**STMicroelectronics
IGBT 600V 30A 30W TO220FP**STGF10NC60HD**STMicroelectronics
IGBT 600V 9A 24W TO220FP**STGF30V60DF**STMicroelectronics
IGBT BIPO 600V 30A TO-220**STGF20NB60S**STMicroelectronics
IGBT 600V 24A 40W TO220FP

Shipment

Delivery Time

In-stock items can be shipped within 24 hours. Some parts will be arranged for delivery within 1-2 days from the date all items arrive at our warehouse. And Allelco ships order once a day at about 17:00, except Sunday. Once the goods are shipped, the estimated delivery time depends on the shipping methods and Delivery destination. The table below shows are the logistic time for some common countries.

Delivery Cost

> Use your express account for shipment if you have one.

> Use our account for the shipment. Refer to the table below for the approximate charges.

(Different time frame / countries / package size has different price.)

Delivery Method

> Global Common Shipment by DHL / UPS / FedEx / TNT / EMS / SF we support.

> Others more shipping ways, please get in touch with your customer manager.

Common Countries Logistic Time Reference		
Region	Country	Logistic Time(Day)
America	United States	5
	Brazil	7
Europe	Germany	5
	United Kingdom	4
	Italy	5
Oceania	Australia	6
	New Zealand	7
Asia	India	6
	Japan	7
Middle East	Israel	6

DHL & FedEx Shipment Charges Reference	
Shipment charges(KG)	Reference DHL(USD\$)
0.00kg-1.00kg	USD\$60.00
1.00kg-2.00kg	USD\$70.00
2.00kg-3.00kg	USD\$80.00

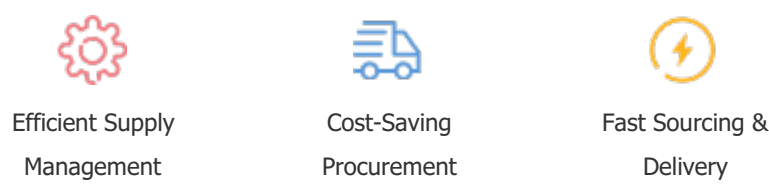
Note: The above table is for reference only. There may have some data bias for the uncontrollable factors.
Contact us if you have any questions.

Payment Support

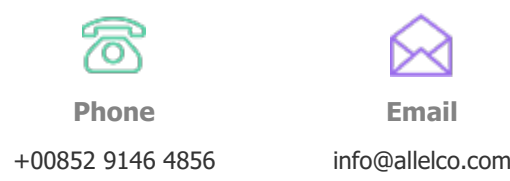
The payment method can be chosen from the methods shown below:
Wire Transfer (T/T, Bank Transfer), Western Union, Credit card, PayPal.



Your Faithful Supply Chain Partner -



Contact us if you have any questions.



Certifications & Memberships



[View More](#)