



Image may be representation.
See specifications for product details.



VIPER222LSTR

Manufacturer Part Number	VIPER222LSTR
Manufacturer	STMicroelectronics
Allelco Part Number	32D-VIPER222LSTR
ECAD Model	PCB Symbol, Footprint & 3D Mode
Parts Description	IC OFFLINE SWITCH FLYBACK 10SSOP
Package	10-SOP (0.154", 3.90mm Width)
Data sheet	VIPER222.pdf
RoHs Status	ROHS3 Compliant

[Get a Quote](#)

VIPER222LSTR - STMicroelectronics. New Original in Stock. Download Linear Technology VIPER222LSTR datasheet/specifications on AllelcoElec.com. Request a quote for VIPER222LSTR, please send us email: info@allelco.com

Specifications

VIPER222LSTR Tech Specifications

VIPER222LSTR - STMicroelectronics technical specifications, attributes, parameters

Product Attribute	Attribute Value	Product Attribute	Attribute Value
Manufacturer	STMicroelectronics	Output Isolation	Isolated
Voltage - Supply (Vcc/Vdd)	4.5V ~ 30V	Operating Temperature	-40°C ~ 150°C (TJ)
Voltage - Start Up	30 V	Mounting Type	Surface Mount
Voltage - Breakdown	730V	Internal Switch(s)	Yes
Topology	Flyback	Frequency - Switching	60kHz
Supplier Device Package	10-SSOP	Fault Protection	Current Limiting, Over Temperature, Over Voltage
Series	VIPER™	Duty Cycle	80%
Power (Watts)	13 W	Control Features	-
Package / Case	10-SOP (0.154", 3.90mm Width)	Base Product Number	VIPER222
Package	Tape & Reel (TR)		

Parts with Similar Specifications

The three parts on the right have similar specifications to STMicroelectronics VIPER222LSTR

Product Attribute				
Part Number	VIPER222LSTR	VIPER222XSTR	VIPER22ADIP	VIPER20ADIP-E
Manufacturer	STMicroelectronics	STMicroelectronics	STMicroelectronics	STMicroelectronics
Power (Watts)	13 W	13 W	12 W	20 W
Duty Cycle	80%	80%	-	-
Series	VIPER™	VIPER™	VIPER™	VIPER™
Voltage - Supply (Vcc/Vdd)	4.5V ~ 30V	4.5V ~ 30V	8V ~ 38V	8V ~ 15V
Control Features	-	-	-	-
Frequency - Switching	60kHz	30kHz	60kHz	Up to 200kHz
Output Isolation	Isolated	Isolated	Isolated	Isolated
Base Product Number	VIPER222	VIPER222	VIPER22	VIPER20
Topology	Flyback	Flyback	Flyback	Flyback
Voltage - Breakdown	730V	730V	730V	700V
Voltage - Start Up	30 V	30 V	14.5 V	11 V
Mounting Type	Surface Mount	Surface Mount	Through Hole	Through Hole
Operating Temperature	-40°C ~ 150°C (TJ)	-40°C ~ 150°C (TJ)	-40°C ~ 150°C (TC)	-
Fault Protection	Current Limiting, Over Temperature, Over Voltage	Current Limiting, Over Temperature, Over Voltage	Current Limiting, Over Temperature, Over Voltage	Current Limiting, Over Temperature
Supplier Device Package	10-SSOP	10-SSOP	8-DIP	8-DIP
Internal Switch(s)	Yes	Yes	Yes	Yes
Package	Tape & Reel (TR)	Tape & Reel (TR)	Tube	Tube
Package / Case	10-SOP (0.154", 3.90mm Width)	10-SOP (0.154", 3.90mm Width)	8-DIP (0.300", 7.62mm)	8-DIP (0.300", 7.62mm)

VIPER222LSTR Datasheet PDF

Download VIPER222LSTR pdf datasheets and STMicroelectronics documentation for VIPER222LSTR - STMicroelectronics.

Datasheets

[VIPER222.pdf](#)

PCN Packaging

[Material Barrier Bag 17/Dec/2020.pdf](#)

Customers Also Interested in

Recommended Products



VIPER21A
STMicroelectronics



VIPER20SP
STMicroelectronics



VIPER22A
LINKAGE



VIPER222XSTR
STMicroelectronics
IC OFFLINE SWITCH FLYBACK
10SSOP



VIPER22ADTR-E
STMicroelectronics



VIPER22ADIP
STMicroelectronics
IC OFFLINE SWITCH FLYBACK 8DIP



VIPER20ADIP-E
STMicroelectronics
IC OFFLINE SWITCH FLYBACK 8DIP



VIPER22ADIP-E
STMicroelectronics
IC OFFLINE SWITCH FLYBACK 8DIP



VIPER20BSP
STMicroelectronics



VIPER20ASP
STMicroelectronics



VIPER22A/VIP22A
STMicroelectronics



VIPER20-22-E
STMicroelectronics
IC OFFLIN CONV FLBACK
5PENTAWATT



VIPER22
XINBOLE



VIPER20ASPTR-E
STMicroelectronics
IC OFFLINE SW FLBACK 10POWERSO



VIPER22AS-E
STMicroelectronics
IC OFFLINE SWITCH FLYBACK 8SOIC



VIPER22AS
STMicroelectronics
IC OFFLINE SWITCH FLYBACK 8SOIC



VIPER20A
STMicroelectronics



VIPER20
STMicroelectronics

Shipment

Delivery Time

In-stock items can be shipped within 24 hours. Some parts will be arranged for delivery within 1-2 days from the date all items arrive at our warehouse. And Allelco ships order once a day at about 17:00, except Sunday. Once the goods are shipped, the estimated delivery time depends on the shipping methods and Delivery destination. The table below shows are the logistic time for some common countries.

Delivery Cost

- > Use your express account for shipment if you have one.
 - > Use our account for the shipment. Refer to the table below for the approximate charges.
- (Different time frame / countries / package size has different price.)

Delivery Method

- > Global Common Shipment by DHL / UPS / FedEx / TNT / EMS / SF we support.
- > Others more shipping ways, please get in touch with your customer manager.

Common Countries Logistic Time Reference

Region	Country	Logistic Time(Day)
America	United States	5
	Brazil	7
Europe	Germany	5
	United Kingdom	4
	Italy	5
Oceania	Australia	6
	New Zealand	7
Asia	India	6
	Japan	7
Middle East	Israel	6

DHL & FedEx Shipment Charges Reference

Shipment charges(KG)	Reference DHL(USD\$)
0.00kg-1.00kg	USD\$60.00
1.00kg-2.00kg	USD\$70.00
2.00kg-3.00kg	USD\$80.00

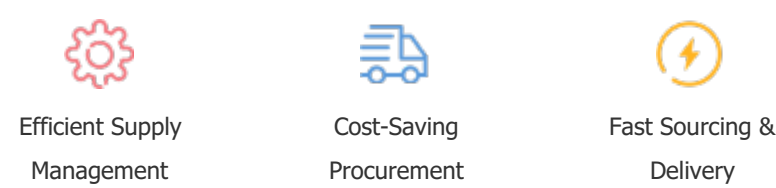
Note: The above table is for reference only. There may have some data bias for the uncontrollable factors.
Contact us if you have any questions.

Payment Support

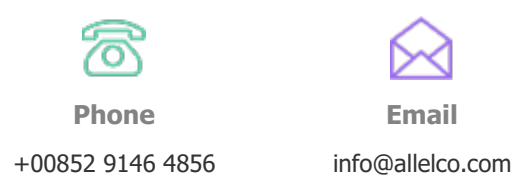
The payment method can be chosen from the methods shown below:
Wire Transfer (T/T, Bank Transfer), Western Union, Credit card, PayPal.



Your Faithful Supply Chain Partner -



Contact us if you have any questions.



Certifications & Memberships



[View More](#)



Contact us

Address: Flat/Rm C 13/F Harvard Commercial Building 105-111 Thomson Road, Wan Chai, Hong Kong
Phone: +00852 9146 4856
Fax: +00852 3010 8510
Email: info@Allelco.com

Copyright © 2012-2023 AllelcoElec.com. All rights reserved.