

Image may be representation.  
See specifications for product details.



## AD605AR

|                          |                                        |
|--------------------------|----------------------------------------|
| Manufacturer Part Number | <b>AD605AR</b>                         |
| Manufacturer             | <b>Analog Devices, Inc.</b>            |
| Allelco Part Number      | 32D-AD605AR                            |
| ECAD Model               | Request Free CAD Models                |
| Parts Description        | IC RF AMP 16SOIC                       |
| Package                  | 16-SOIC (0.154", 3.90mm Width)         |
| Data sheet               | <b>Cylindrical Battery Holders.pdf</b> |

**Get a Quote**

AD605AR - Analog Devices Inc..New Original in Stock. Download Linear Technology AD605AR datasheet/specifications on AllelcoElec.com.  
Request a quote for AD605AR, please send us email: [info@allelco.com](mailto:info@allelco.com)

## Specifications

AD605AR Tech Specifications

AD605AR - Analog Devices Inc. technical specifications, attributes, parameters

| Product Attribute       | Attribute Value                | Product Attribute   | Attribute Value |
|-------------------------|--------------------------------|---------------------|-----------------|
| Manufacturer            | Analog Devices, Inc.           | P1dB                | 15dBm           |
| Voltage - Supply        | 4.5V ~ 5.5V                    | Noise Figure        | 12dB            |
| Test Frequency          | -                              | Mounting Type       | Surface Mount   |
| Supplier Device Package | 16-SOIC                        | Gain                | 34dB            |
| Series                  | X-AMP®                         | Frequency           | -               |
| RF Type                 | -                              | Current - Supply    | 23mA            |
| Package / Case          | 16-SOIC (0.154", 3.90mm Width) | Base Product Number | AD605           |
| Package                 | Tube                           |                     |                 |

## Parts with Similar Specifications

The three parts on the right have similar specifications to Analog Devices Inc. AD605AR

| Product Attribute       |                                |                                |                                |                         |
|-------------------------|--------------------------------|--------------------------------|--------------------------------|-------------------------|
| Part Number             | AD605AR                        | AD605BR                        | AD605BRZ                       | AD605AN                 |
| Manufacturer            | Analog Devices Inc.            | Analog Devices Inc.            | Analog Devices Inc.            | Analog Devices Inc.     |
| RF Type                 | -                              | -                              | -                              | -                       |
| Package                 | Tube                           | Tube                           | Tube                           | Tube                    |
| Noise Figure            | 12dB                           | 12dB                           | 12dB                           | 12dB                    |
| Mounting Type           | Surface Mount                  | Surface Mount                  | Surface Mount                  | Through Hole            |
| Test Frequency          | -                              | -                              | -                              | -                       |
| Gain                    | 34dB                           | 34dB                           | 34dB                           | 34dB                    |
| Package / Case          | 16-SOIC (0.154", 3.90mm Width) | 16-SOIC (0.154", 3.90mm Width) | 16-SOIC (0.154", 3.90mm Width) | 16-DIP (0.300", 7.62mm) |
| P1dB                    | 15dBm                          | 15dBm                          | 15dBm                          | 15dBm                   |
| Voltage - Supply        | 4.5V ~ 5.5V                    | 4.5V ~ 5.5V                    | 4.5V ~ 5.5V                    | 4.5V ~ 5.5V             |
| Series                  | X-AMP®                         | X-AMP®                         | X-AMP®                         | X-AMP®                  |
| Base Product Number     | AD605                          | AD605                          | AD605                          | AD605                   |
| Supplier Device Package | 16-SOIC                        | 16-SOIC                        | 16-SOIC                        | 16-PDIP                 |
| Current - Supply        | 23mA                           | 23mA                           | 23mA                           | 23mA                    |
| Frequency               | -                              | -                              | -                              | -                       |

## AD605AR Datasheet PDF

Download AD605AR pdf datasheets and Analog Devices Inc. documentation for AD605AR - Analog Devices Inc..

### Datasheets

Cylindrical Battery Holders.pdf

## Customers Also Interested in

### Recommended Products



**AD605BR**

Analog Devices Inc.  
IC RF AMP 16SOIC



**AD604ARS**

Analog Devices Inc.  
IC AMP VGA DUAL ULN 40MA  
24SSOP



**AD604ARSZ**

Analog Devices Inc.  
IC VARIABLE GAIN 2 CIRC 24SSOP



**AD606JRZ**

Analog Devices Inc.  
IC LOGARITHMIC 1 CIRCUIT 16SOIC



**AD606JN**

Analog Devices Inc.  
IC LOGARITHMIC 1 CIRCUIT 16DIP



**AD606JR**

Analog Devices Inc.  
IC LOGARITHMIC 1 CIRCUIT 16SOIC



| AD604AR                                                                           | AD606JNZ                                                                          | AD605BRZ                                                                          | AD604ARZ                                                                           | AD605AN                                                                             | AD606JR.                                                                            |
|-----------------------------------------------------------------------------------|-----------------------------------------------------------------------------------|-----------------------------------------------------------------------------------|------------------------------------------------------------------------------------|-------------------------------------------------------------------------------------|-------------------------------------------------------------------------------------|
| Analog Devices Inc.<br>IC VARIABLE GAIN 2 CIRC 24SOIC                             | Analog Devices Inc.<br>IC LOGARITHMIC 1 CIRCUIT 16DIP                             | Analog Devices Inc.<br>IC RF AMP 16SOIC                                           | Analog Devices Inc.<br>IC VARIABLE GAIN 2 CIRC 24SOIC                              | Analog Devices Inc.<br>IC AMP VGA DUAL LNL LP 40MA 16DIP                            | ADI (Analog Devices, Inc.)                                                          |
|  |  |  |  |  |  |
| <b>AD606JR-REEL</b><br>ADI (Analog Devices, Inc.)                                 | <b>AD605ARZ-R7</b><br>Analog Devices Inc.<br>IC RF AMP 16SOIC                     | <b>AD605ARZ</b><br>Analog Devices Inc.<br>IC RF AMP 16SOIC                        | <b>AD604ARSZ-R7</b><br>Analog Devices Inc.<br>IC VARIABLE GAIN 2 CIRC 24SSOP       | <b>AD604AN</b><br>Analog Devices Inc.<br>IC AMP VGA DUAL ULN 40MA 24DIP             | <b>AD604AR-REEL</b><br>Analog Devices Inc.<br>IC VARIABLE GAIN 2 CIRC 24SOIC        |

## Shipment

### Delivery Time

In-stock items can be shipped within 24 hours. Some parts will be arranged for delivery within 1-2 days from the date all items arrive at our warehouse. And Allelco ships order once a day at about 17:00, except Sunday. Once the goods are shipped, the estimated delivery time depends on the shipping methods and Delivery destination. The table below shows are the logistic time for some common countries.

### Delivery Cost

> Use your express account for shipment if you have one.

> Use our account for the shipment. Refer to the table below for the approximate charges.

(Different time frame / countries / package size has different price.)

### Delivery Method

> Global Common Shipment by DHL / UPS / FedEx / TNT / EMS / SF we support.

> Others more shipping ways, please get in touch with your customer manager.

| Common Countries Logistic Time Reference |                |                    |
|------------------------------------------|----------------|--------------------|
| Region                                   | Country        | Logistic Time(Day) |
| America                                  | United States  | 5                  |
|                                          | Brazil         | 7                  |
| Europe                                   | Germany        | 5                  |
|                                          | United Kingdom | 4                  |
|                                          | Italy          | 5                  |
| Oceania                                  | Australia      | 6                  |
|                                          | New Zealand    | 7                  |
| Asia                                     | India          | 6                  |
|                                          | Japan          | 7                  |
| Middle East                              | Israel         | 6                  |

| DHL & FedEx Shipment Charges Reference |                      |
|----------------------------------------|----------------------|
| Shipment charges(KG)                   | Reference DHL(USD\$) |
| 0.00kg-1.00kg                          | USD\$60.00           |
| 1.00kg-2.00kg                          | USD\$70.00           |
| 2.00kg-3.00kg                          | USD\$80.00           |

Note: The above table is for reference only. There may have some data bias for the uncontrollable factors.

Contact us if you have any questions.

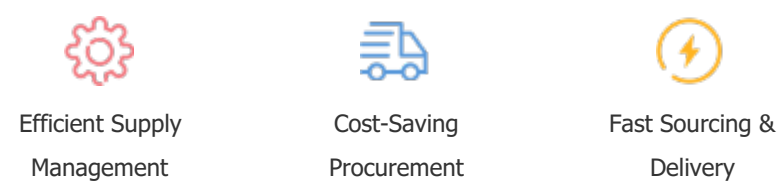
## Payment Support

The payment method can be chosen from the methods shown below:

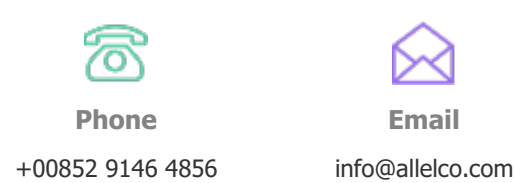
Wire Transfer (T/T, Bank Transfer), Western Union, Credit card, PayPal.



## Your Faithful Supply Chain Partner -



Contact us if you have any questions.



## Certifications & Memberships



[View More](#)