

Image may be representation.  
See specifications for product details.



## ADSP-21061KS-160

Manufacturer Part Number	<b>ADSP-21061KS-160</b>
Manufacturer	<b>Analog Devices, Inc.</b>
Allelco Part Number	32D-ADSP-21061KS-160
ECAD Model	Request Free CAD Models
Parts Description	IC DSP CONTROLLER 1MBIT 240MQFP
Package	240-BFQFP Exposed Pad
Data sheet	<b>ADSP-21061(L).pdf</b>

**Get a Quote**

ADSP-21061KS-160 - Analog Devices Inc..New Original in Stock. Download Linear Technology ADSP-21061KS-160 datasheet/specifications on AllelcoElec.com.  
Request a quote for ADSP-21061KS-160, please send us email: [info@allelco.com](mailto:info@allelco.com)

### Specifications

ADSP-21061KS-160 Tech Specifications  
ADSP-21061KS-160 - Analog Devices Inc. technical specifications, attributes, parameters

Product Attribute	Attribute Value	Product Attribute	Attribute Value
Manufacturer	Analog Devices, Inc.	Operating Temperature	0°C ~ 85°C
Voltage - I/O	5.00V	On-Chip RAM	128kB
Voltage - Core	5.00V	Non-Volatile Memory	External
Type	Floating Point	Mounting Type	Surface Mount
Supplier Device Package	240-MQFP-EP (32x32)	Interface	Synchronous Serial Port (SSP)
Series	SHARC®	Clock Rate	40MHz
Package / Case	240-BFQFP Exposed Pad	Base Product Number	ADSP-21061
Package	Tray		

### Parts with Similar Specifications

The three parts on the right have similar specifications to Analog Devices Inc. ADSP-21061KS-160

Product Attribute				
Part Number	ADSP-21061KS-160	ADSP-21061KS-133	ADSP-21061KS-200	ADSP-21061LKB-160
Manufacturer	Analog Devices Inc.	Analog Devices Inc.	Analog Devices Inc.	Analog Devices Inc.
Series	SHARC®	SHARC®	SHARC®	SHARC®
Interface	Synchronous Serial Port (SSP)	Synchronous Serial Port (SSP)	Synchronous Serial Port (SSP)	Synchronous Serial Port (SSP)
Type	Floating Point	Floating Point	Floating Point	Floating Point
On-Chip RAM	128kB	128kB	128kB	128kB
Mounting Type	Surface Mount	Surface Mount	Surface Mount	Surface Mount
Non-Volatile Memory	External	External	External	External
Package / Case	240-BFQFP Exposed Pad	240-BFQFP Exposed Pad	240-BFQFP Exposed Pad	225-BBGA
Package	Tray	Tray	Tray	Tray
Operating Temperature	0°C ~ 85°C	0°C ~ 85°C (TC)	0°C ~ 85°C (TC)	0°C ~ 85°C (TC)
Voltage - Core	5.00V	5.00V	5.00V	3.30V
Voltage - I/O	5.00V	5.00V	5.00V	3.30V
Clock Rate	40MHz	33MHz	50MHz	40MHz
Base Product Number	ADSP-21061	ADSP-21061	ADSP-21061	ADSP-21061
Supplier Device Package	240-MQFP-EP (32x32)	240-MQFP-EP (32x32)	240-MQFP-EP (32x32)	225-PBGA (23x23)

### ADSP-21061KS-160 Datasheet PDF

Download ADSP-21061KS-160 pdf datasheets and Analog Devices Inc. documentation for ADSP-21061KS-160 - Analog Devices Inc..

#### Datasheets

[ADSP-21061\(L\).pdf](#)

#### PCN Obsolescence/ EOL

[ADSP-2106x Devices Revision A 29/May/2014.pdf](#)

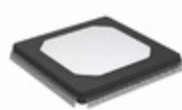
[ADSP-2106yy Devices 23/May/2014.pdf](#)

### Customers Also Interested in

#### Recommended Products



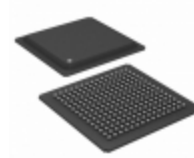
**ADSP-21061KS-133**  
Analog Devices Inc.  
IC DSP CONTROLLER 32BIT  
240MQFP



**ADSP-21061KS-200**  
Analog Devices Inc.  
IC DSP CONTROLLER 32BIT  
240MQFP



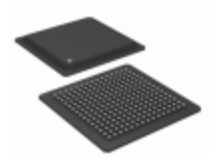
**ADSP-21061LKS-160**  
ADI (Analog Devices, Inc.)



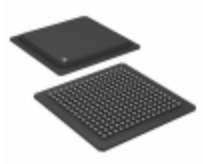
**ADSP-21061LKB-160**  
Analog Devices Inc.  
IC DSP CONTROLLER 32BIT  
225BGA



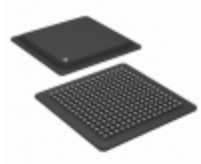
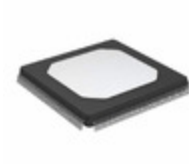
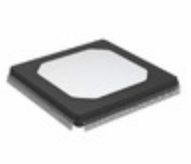
**ADSP-21060LKSZ-160**  
Analog Devices Inc.  
IC DSP CONTROLLER 32BIT  
240MQFP



**ADSP-21061LKBZ-160**  
Analog Devices Inc.  
IC DSP CONTROLLER 32BIT  
225-BGA

**ADSP-21060LKB-160**Analog Devices Inc.  
IC DSP CONTROLLER 32BIT 225 BGA**ADSP-21061L-KB-160**

ADI (Analog Devices, Inc.)

**ADSP-21060LAB-160**Analog Devices Inc.  
IC DSP CONTROLLER 32BIT 225BGA**ADSP-21060LCW-160**Analog Devices Inc.  
IC DSP CONTROLLER 32BIT 240CQFP**ADSP-21060LKS-160**Analog Devices Inc.  
IC DSP CONTROLLER 32BIT 240MQFP**ADSP-21060KSZ-160**Analog Devices Inc.  
IC DSP CONTROLLER 32BIT 240MQFP**ADSP-21062CS-160**Analog Devices Inc.  
IC DSP CONTROLLER 32BIT 240MQFP**ADSP-21061KSZ-160**Analog Devices Inc.  
IC DSP CONTROLLER 1MBIT 240MQFP**ADSP-21060LCW-133**Analog Devices Inc.  
IC DSP CONTROLLER 32BIT 240CQFP**ADSP-21061LKSZ-160**Analog Devices Inc.  
IC DSP CONTROLLER 1MBIT 240MQFP**ADSP-21060KS-160**Analog Devices Inc.  
IC DSP CONTROLLER 32BIT 240MQFP**ADSP-21062CSZ-160**Analog Devices Inc.  
IC DSP CONTROLLER 32BIT 240MQFP

## Shipment

### Delivery Time

In-stock items can be shipped within 24 hours. Some parts will be arranged for delivery within 1-2 days from the date all items arrive at our warehouse. And Allelco ships order once a day at about 17:00, except Sunday. Once the goods are shipped, the estimated delivery time depends on the shipping methods and Delivery destination. The table below shows are the logistic time for some common countries.

### Delivery Cost

> Use your express account for shipment if you have one.

> Use our account for the shipment. Refer to the table below for the approximate charges.

(Different time frame / countries / package size has different price.)

### Delivery Method

> Global Common Shipment by DHL / UPS / FedEx / TNT / EMS / SF we support.

> Others more shipping ways, please get in touch with your customer manager.

**Common Countries Logistic Time Reference**

Region	Country	Logistic Time(Day)
America	United States	5
	Brazil	7
Europe	Germany	5
	United Kingdom	4
	Italy	5
Oceania	Australia	6
	New Zealand	7
Asia	India	6
	Japan	7
Middle East	Israel	6

**DHL & FedEx Shipment Charges Reference**

Shipment charges(KG)	Reference DHL(USD\$)
0.00kg-1.00kg	USD\$60.00
1.00kg-2.00kg	USD\$70.00
2.00kg-3.00kg	USD\$80.00

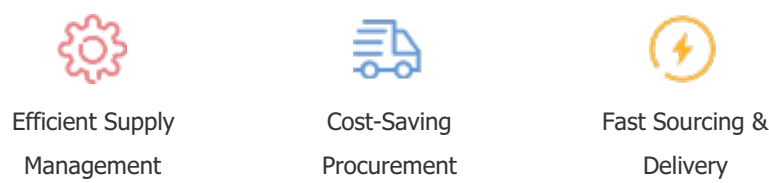
Note: The above table is for reference only. There may have some data bias for the uncontrollable factors.  
Contact us if you have any questions.

## Payment Support

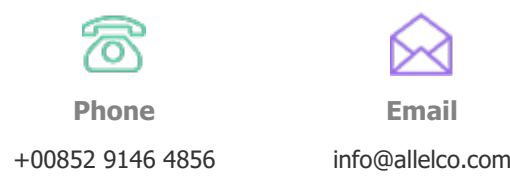
The payment method can be chosen from the methods shown below:  
Wire Transfer (T/T, Bank Transfer), Western Union, Credit card, PayPal.



## Your Faithful Supply Chain Partner -



Contact us if you have any questions.



## Certifications & Memberships



[View More](#)



### Contact us

Address: Flat/Rm C 13/F Harvard Commercial Building 105-111 Thomson Road, Wan Chai, Hong Kong

Phone: +00852 9146 4856

Fax: +00852 3010 8510

Email: info@allelco.com

Copyright © 2012-2023 AllelcoElec.com. All rights reserved.