

Image may be representation.
See specifications for product details.



MCP1804T-C002I/MT

| | |
|--------------------------|---------------------------------|
| Manufacturer Part Number | MCP1804T-C002I/MT |
| Manufacturer | Microchip Technology |
| Allelco Part Number | 32D-MCP1804T-C002I/MT |
| ECAD Model | Request Free CAD Models |
| Parts Description | IC REG LINEAR 12V 150MA SOT89-5 |
| Package | SOT-89-5/6 |
| Data sheet | MCP1804 Datasheet.pdf |
| RoHs Status | ROHS3 Compliant |

Get a Quote

MCP1804T-C002I/MT - Microchip Technology. New Original in Stock. Download Linear Technology MCP1804T-C002I/MT datasheet/specifications on AllelcoElec.com. Request a quote for MCP1804T-C002I/MT, please send us email: info@allelco.com

Specifications

MCP1804T-C002I/MT Tech Specifications
MCP1804T-C002I/MT - Microchip Technology technical specifications, attributes, parameters

| Product Attribute | Attribute Value | Product Attribute | Attribute Value |
|------------------------------|--------------------------------|--------------------------|-----------------|
| Manufacturer | Microchip Technology | Output Type | Fixed |
| Voltage Dropout (Max) | 0.85V @ 100mA | Output Configuration | Positive |
| Voltage - Output (Min/Fixed) | 12V | Operating Temperature | -40°C ~ 85°C |
| Voltage - Output (Max) | - | Number of Regulators | 1 |
| Voltage - Input (Max) | 28V | Mounting Type | Surface Mount |
| Supplier Device Package | SOT-89-5 | Current - Supply (Max) | 125 µA |
| Series | - | Current - Quiescent (Iq) | 105 µA |
| Protection Features | Over Current, Over Temperature | Current - Output | 150mA |
| Package / Case | SOT-89-5/6 | Control Features | Enable |
| Package | Tape & Reel (TR) | Base Product Number | MCP1804 |
| PSRR | 50dB (1kHz) | | |

Parts with Similar Specifications

The three parts on the right have similar specifications to Microchip Technology MCP1804T-C002I/MT

| Product Attribute | | | | |
|------------------------------|--------------------------------|--------------------------------|-------------------------|--------------------------------|
| Part Number | MCP1804T-C002I/MT | MCP1804T-C002I/MB | MCP1810T-33I/J8A | MCP1804T-C002I/OT |
| Manufacturer | Microchip Technology | Microchip Technology | Microchip Technology | Microchip Technology |
| Operating Temperature | -40°C ~ 85°C | -40°C ~ 85°C | -40°C ~ 85°C (TJ) | -40°C ~ 85°C |
| Supplier Device Package | SOT-89-5 | SOT-89-3 | 8-VDFN (2x2) | SOT-23-5 |
| Mounting Type | Surface Mount | Surface Mount | Surface Mount | Surface Mount |
| Voltage - Output (Max) | - | - | - | - |
| Number of Regulators | 1 | 1 | 1 | 1 |
| Current - Quiescent (Iq) | 105 µA | 105 µA | 50 nA | 105 µA |
| Package | Tape & Reel (TR) | Tape & Reel (TR) | Tape & Reel (TR) | Tape & Reel (TR) |
| Control Features | Enable | - | Enable | Enable |
| Voltage - Output (Min/Fixed) | 12V | 12V | 3.3V | 12V |
| Current - Output | 150mA | 150mA | 150mA | 150mA |
| Voltage Dropout (Max) | 0.85V @ 100mA | 0.85V @ 100mA | 0.38V @ 150mA | 0.85V @ 100mA |
| Base Product Number | MCP1804 | MCP1804 | MCP1810 | MCP1804 |
| Output Configuration | Positive | Positive | Positive | Positive |
| Output Type | Fixed | Fixed | Fixed | Fixed |
| Voltage - Input (Max) | 28V | 28V | 5.5V | 28V |
| PSRR | 50dB (1kHz) | 50dB (1kHz) | 40dB (100Hz) | 50dB (1kHz) |
| Package / Case | SOT-89-5/6 | TO-243AA | 8-VDFN Exposed Pad | SC-74A, SOT-753 |
| Current - Supply (Max) | 125 µA | 125 µA | 290 µA | 125 µA |
| Series | - | - | - | - |
| Protection Features | Over Current, Over Temperature | Over Current, Over Temperature | Over Current | Over Current, Over Temperature |

MCP1804T-C002I/MT Datasheet PDF

Download MCP1804T-C002I/MT pdf datasheets and Microchip Technology documentation for MCP1804T-C002I/MT - Microchip Technology.

Datasheets

MCP1804 Datasheet.pdf

PCN Packaging

Label and Packing Changes 23/Sep/2015.pdf

Packing Changes 10/Oct/2016.pdf



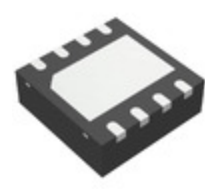
Portable Power Conversion Design Guide.pdf

Customers Also Interested in

Recommended Products



MCP1804T-C002I/MB
Microchip Technology
IC REG LINEAR 12V 150MA SOT89-3



MCP1810T-33I/J8A
Microchip Technology
IC REG LINEAR 3.3V 150MA 8VDFN



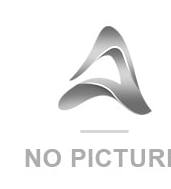
MCP1804T-8002I/MB
Micrel / Microchip Technology



MCP1804T-C002I/OT
Microchip Technology
IC REG LINEAR 12V 150MA SOT23-5



MCP1811AT-033/OT
Microchip Technology
IC REG LINEAR 3.3V 150MA SOT23-5



MCP1804T-5002I/MBTR
MICROC



MCP1812AT-033/OT
Microchip Technology
IC REG LINEAR 3.3V 300MA SOT23-5



MCP1811AT-033/LT
Microchip Technology
IC REG LINEAR 3.3V 150MA SC70-5



MCP1811AT-012/TT
Microchip Technology
IC REG LINEAR 1.2V 150MA SOT23-3



MCP1804T-C002I/DB
Microchip Technology
IC REG LINEAR 12V 150MA SOT223-3



MCP1804T-5002I/MB
Microchip Technology
IC REG LINEAR 5V 150MA SOT89-3



MCP1804T-5002I/DB
Microchip Technology
IC REG LINEAR 5V 150MA SOT223-3



MCP1812BT-040/OT
Microchip Technology
IC REG LINEAR 4V 300MA SOT23-5



MCP1804T-A002I/OT
Microchip Technology
IC REG LINEAR 10V 150MA SOT23-5



MCP1804T-5002I/OT
Microchip Technology
IC REG LINEAR 5V 150MA SOT23-5



MCP1804T-A002I/DB
Microchip Technology
IC REG LINEAR 10V 150MA SOT223-3



MCP1812AT-033/TT
Microchip Technology
IC REG LINEAR 3.3V 300MA SOT23-3



MCP1804T-A002I/MB
Microchip Technology
IC REG LINEAR 10V 150MA SOT89-3

Shipment

Delivery Time

In-stock items can be shipped within 24 hours. Some parts will be arranged for delivery within 1-2 days from the date all items arrive at our warehouse. And Allelco ships order once a day at about 17:00, except Sunday. Once the goods are shipped, the estimated delivery time depends on the shipping methods and Delivery destination. The table below shows are the logistic time for some common countries.

Delivery Cost

- > Use your express account for shipment if you have one.
 - > Use our account for the shipment. Refer to the table below for the approximate charges.
- (Different time frame / countries / package size has different price.)

Delivery Method

- > Global Common Shipment by DHL / UPS / FedEx / TNT / EMS / SF we support.
- > Others more shipping ways, please get in touch with your customer manager.

| Common Countries Logistic Time Reference | | |
|--|----------------|--------------------|
| Region | Country | Logistic Time(Day) |
| America | United States | 5 |
| | Brazil | 7 |
| Europe | Germany | 5 |
| | United Kingdom | 4 |
| | Italy | 5 |
| Oceania | Australia | 6 |
| | New Zealand | 7 |
| Asia | India | 6 |
| | Japan | 7 |
| Middle East | Israel | 6 |

| DHL & FedEx Shipment Charges Reference | |
|--|----------------------|
| Shipment charges(KG) | Reference DHL(USD\$) |
| 0.00kg-1.00kg | USD\$60.00 |
| 1.00kg-2.00kg | USD\$70.00 |
| 2.00kg-3.00kg | USD\$80.00 |

Note: The above table is for reference only. There may have some data bias for the uncontrollable factors.
Contact us if you have any questions.

Payment Support

The payment method can be chosen from the methods shown below:
Wire Transfer (T/T, Bank Transfer), Western Union, Credit card, PayPal.



Your Faithful Supply Chain Partner -

- Efficient Supply Management
- Cost-Saving Procurement
- Fast Sourcing & Delivery

Contact us if you have any questions.

- Phone
+00852 9146 4856
- Email
info@allelco.com

Certifications & Memberships



[View More](#)

Contact us

Address: Flat/Rm C 13/F Harvard Commercial Building 105-111 Thomson Road, Wan Chai, Hong Kong
Phone: +00852 9146 4856
Fax: +00852 3010 8510
Email: info@Allelco.com