



Image may be representation.
See specifications for product details.



ADG1422BRMZ-REEL7

Manufacturer Part Number	ADG1422BRMZ-REEL7
Manufacturer	Analog Devices, Inc.
Allelco Part Number	32D-ADG1422BRMZ-REEL7
ECAD Model	PCB Symbol, Footprint & 3D Mode
Parts Description	IC SW SPST-NCX2 2.4OHM 10MSOP
Package	10-TFSOP, 10-MSOP (0.118", 3.00mm Width)
Data sheet	ADG1421-23.pdf
RoHs Status	ROHS3 Compliant

[Get a Quote](#)

ADG1422BRMZ-REEL7 - Analog Devices Inc..New Original in Stock. Download Linear Technology ADG1422BRMZ-REEL7 datasheet/specifications on AllelcoElec.com. Request a quote for ADG1422BRMZ-REEL7, please send us email: info@allelco.com

Specifications

ADG1422BRMZ-REEL7 Tech Specifications
ADG1422BRMZ-REEL7 - Analog Devices Inc. technical specifications, attributes, parameters

Product Attribute	Attribute Value	Product Attribute	Attribute Value
Manufacturer	Analog Devices, Inc.	Number of Circuits	2
Voltage - Supply, Single (V+)	5V ~ 16.5V	Multiplexer/Demultiplexer Circuit	1:1
Voltage - Supply, Dual (V±)	±4.5V ~ 16.5V	Mounting Type	Surface Mount
Switch Time (Ton, Toff) (Max)	145ns, 145ns	Current - Leakage (IS(off)) (Max)	500pA
Switch Circuit	SPST - NC	Crosstalk	-74dB @ 1MHz
Supplier Device Package	10-MSOP	Charge Injection	-5pC
Series	-	Channel-to-Channel Matching (ΔRon)	20mOhm
Package / Case	10-TFSOP, 10-MSOP (0.118", 3.00mm Width)	Channel Capacitance (CS(off), CD(off))	18pF, 22pF
Package	Tape & Reel (TR)	Base Product Number	ADG1422
Operating Temperature	-40°C ~ 125°C (TA)	-3db Bandwidth	180MHz
On-State Resistance (Max)	2.4Ohm		

Parts with Similar Specifications

The three parts on the right have similar specifications to Analog Devices Inc. ADG1422BRMZ-REEL7

Product Attribute				
Part Number	ADG1422BRMZ-REEL7	ADG1434YCPZ-REEL7	ADG1423BCPZ-REEL7	ADG1433YCPZ-REEL7
Manufacturer	Analog Devices Inc.	Analog Devices Inc.	Analog Devices Inc.	Analog Devices Inc.
Series	-	-	-	-
Number of Circuits	2	4	2	3
Voltage - Supply, Single (V+)	5V ~ 16.5V	5V ~ 16.5V	5V ~ 16.5V	5V ~ 16.5V
Package / Case	10-TFSOP, 10-MSOP (0.118", 3.00mm Width)	20-WFQFN Exposed Pad, CSP	10-VDFN Exposed Pad, CSP	16-VQFN Exposed Pad, CSP
Operating Temperature	-40°C ~ 125°C (TA)	-40°C ~ 125°C (TA)	-40°C ~ 125°C (TA)	-40°C ~ 125°C (TA)
On-State Resistance (Max)	2.4Ohm	4.7Ohm	2.4Ohm	4.7Ohm
Voltage - Supply, Dual (V±)	±4.5V ~ 16.5V	±4.5V ~ 16.5V	±4.5V ~ 16.5V	±4.5V ~ 16.5V
Switch Circuit	SPST - NC	SPDT	SPST - NO/NC	SPDT
Crosstalk	-74dB @ 1MHz	-70dB @ 1MHz	-74dB @ 1MHz	-70dB @ 1MHz
Package	Tape & Reel (TR)	Tape & Reel (TR)	Tape & Reel (TR)	Tape & Reel (TR)
Mounting Type	Surface Mount	Surface Mount	Surface Mount	Surface Mount
Switch Time (Ton, Toff) (Max)	145ns, 145ns	170ns, 75ns	145ns, 145ns	170ns, 75ns
-3db Bandwidth	180MHz	200MHz	180MHz	200MHz
Channel Capacitance (CS(off), CD(off))	18pF, 22pF	12pF, 22pF	18pF, 22pF	12pF, 22pF
Supplier Device Package	10-MSOP	20-LFCSP (4x4)	10-LFCSP-WD (3x3)	16-LFCSP-VQ (4x4)
Channel-to-Channel Matching (ΔRon)	20mOhm	500mOhm	20mOhm	500mOhm
Current - Leakage (IS(off)) (Max)	500pA	300pA	500pA	300pA
Base Product Number	ADG1422	ADG1434	ADG1423	ADG1433
Multiplexer/Demultiplexer Circuit	1:1	2:1	1:1	2:1
Charge Injection	-5pC	-50pC	-5pC	-50pC

ADG1422BRMZ-REEL7 Datasheet PDF

Download ADG1422BRMZ-REEL7 pdf datasheets and Analog Devices Inc. documentation for ADG1422BRMZ-REEL7 - Analog Devices Inc..

Datasheets

[ADG1421-23.pdf](#)

Other Related Documents

[Tape and Reel Packaging.pdf](#)



Assembly Site Chg 26/Jan/2016.pdf

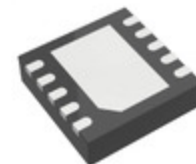
Customers Also Interested in

Recommended Products



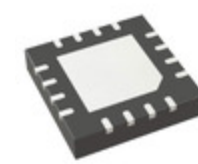
ADG1422BCPZ

ADI (Analog Devices, Inc.)



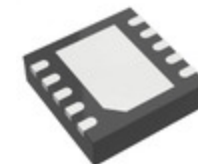
ADG1421BRM

ADI (Analog Devices, Inc.)



ADG1433YCPZ-REEL

Analog Devices Inc.
IC SWITCH SPDTX3 4.7OHM
16LFCSP



ADG1422BCPZ-REEL7

Analog Devices Inc.
IC SW SPST-NCX2 2.4OHM 10LFCSP



ADG1422BRMZ

Analog Devices Inc.
IC SW SPST-NCX2 2.4OHM 10MSOP



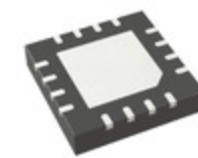
ADG1423BRMZ-REEL7

Analog Devices Inc.
IC SW SPST-NO/NCX2 2.4OHM
10MSOP



ADG1419BRMZ-REEL7

Analog Devices Inc.
IC SWITCH SPDT X 1 2.4OHM 8MSOP



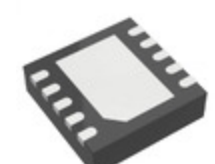
ADG1433YCPZ-REEL7

Analog Devices Inc.
IC SWITCH SPDTX3 4.7OHM
16LFCSP



ADG1433YRUZ

Analog Devices Inc.
IC SWITCH SPDTX3 4.7OHM
16TSSOP



ADG1421BCPZ-REEL7

Analog Devices Inc.
IC SW SPST-NOX2 2.4OHM 10LFCSP



ADG1433YRUZ-REEL7

Analog Devices Inc.
IC SWITCH SPDTX3 4.7OHM
16TSSOP



ADG1421BRMZ

Analog Devices Inc.
IC SW SPST-NOX2 2.4OHM 10MSOP



ADG1434YRUZ

Analog Devices Inc.
IC SWITCH SPDTX4 4.7OHM
20TSSOP



ADG1421BRMZ-REEL7

Analog Devices Inc.
IC SW SPST-NOX2 2.4OHM 10MSOP



ADG1434YRUZ-REEL

Analog Devices Inc.
IC SWITCH SPDTX4 4.7OHM
20TSSOP

Shipment

Delivery Time

In-stock items can be shipped within 24 hours. Some parts will be arranged for delivery within 1-2 days from the date all items arrive at our warehouse. And Allelco ships order once a day at about 17:00, except Sunday. Once the goods are shipped, the estimated delivery time depends on the shipping methods and Delivery destination. The table below shows are the logistic time for some common countries.

Delivery Cost

- > Use your express account for shipment if you have one.
 - > Use our account for the shipment. Refer to the table below for the approximate charges.
- (Different time frame / countries / package size has different price.)

Delivery Method

- > Global Common Shipment by DHL / UPS / FedEx / TNT / EMS / SF we support.
- > Others more shipping ways, please get in touch with your customer manager.

Common Countries Logistic Time Reference

Region	Country	Logistic Time(Day)
America	United States	5
	Brazil	7
Europe	Germany	5
	United Kingdom	4
	Italy	5
Oceania	Australia	6
	New Zealand	7
Asia	India	6
	Japan	7
Middle East	Israel	6

DHL & FedEx Shipment Charges Reference

Shipment charges(KG)	Reference DHL(USD\$)
0.00kg-1.00kg	USD\$60.00
1.00kg-2.00kg	USD\$70.00
2.00kg-3.00kg	USD\$80.00

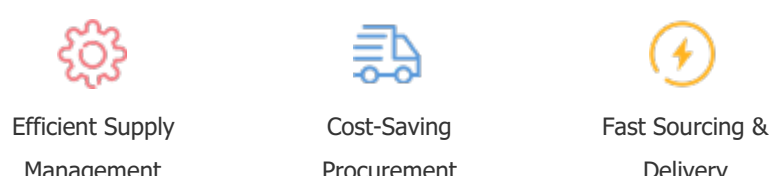
Note: The above table is for reference only. There may have some data bias for the uncontrollable factors.
Contact us if you have any questions.

Payment Support

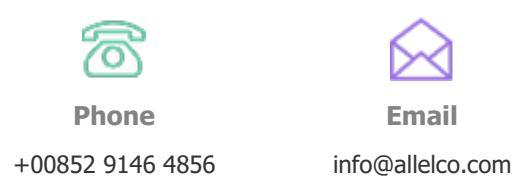
The payment method can be chosen from the methods shown below:
Wire Transfer (T/T, Bank Transfer), Western Union, Credit card,
PayPal.



Your Faithful Supply Chain Partner -



Contact us if you have any questions.



Certifications & Memberships



View More