

Image may be representation.
See specifications for product details.



SD103AWS-HE3-08

Manufacturer Part Number	SD103AWS-HE3-08
Manufacturer	Vishay General Semiconductor – Diodes Division
Allelco Part Number	32D-SD103AWS-HE3-08
ECAD Model	Request Free CAD Models
Parts Description	DIODE SCHOTTKY 40V 350MA SOD323
Package	SC-76, SOD-323
Data sheet	SD103xWS.pdf
RoHs Status	ROHS3 Compliant

Get a Quote

SD103AWS-HE3-08 - Vishay General Semiconductor - Diodes Division. New Original in Stock. Download Linear Technology SD103AWS-HE3-08 datasheet/specifications on AllelcoElec.com.
Request a quote for SD103AWS-HE3-08, please send us email: info@allelco.com

Specifications

SD103AWS-HE3-08 Tech Specifications
SD103AWS-HE3-08 - Vishay General Semiconductor - Diodes Division technical specifications, attributes, parameters

Product Attribute	Attribute Value	Product Attribute	Attribute Value
Manufacturer	Vishay General Semiconductor – Diodes Division	Package / Case	SC-76, SOD-323
Voltage - Forward (Vf) (Max) @ If	600 mV @ 200 mA	Package	Tape & Reel (TR)
Voltage - DC Reverse (Vr) (Max)	40 V	Operating Temperature - Junction	-55°C ~ 150°C
Technology	Schottky	Mounting Type	Surface Mount
Supplier Device Package	SOD-323	Current - Reverse Leakage @ Vr	5 µA @ 30 V
Speed	Fast Recovery =< 500ns, > 200mA (Io)	Current - Average Rectified (Io)	350mA
Series	Automotive, AEC-Q101	Capacitance @ Vr, F	50pF @ 0V, 1MHz
Reverse Recovery Time (trr)	10 ns	Base Product Number	SD103

Parts with Similar Specifications

The three parts on the right have similar specifications to Vishay General Semiconductor - Diodes Division SD103AWS-HE3-08

Product Attribute				
Part Number	SD103AWS-HE3-08	SD103AWS-7	SD103AWS-G3-08	SD103AWS-TP
Manufacturer	Vishay General Semiconductor - Diodes Division	Diodes Incorporated	Vishay General Semiconductor - Diodes Division	Micro Commercial Co
Technology	Schottky	Schottky	Schottky	Schottky
Mounting Type	Surface Mount	Surface Mount	Surface Mount	Surface Mount
Current - Average Rectified (Io)	350mA	350mA	350mA	350mA
Package	Tape & Reel (TR)	Tape & Reel (TR)	Tape & Reel (TR)	Tape & Reel (TR)
Current - Reverse Leakage @ Vr	5 µA @ 30 V	5 µA @ 30 V	5 µA @ 30 V	5 µA @ 30 V
Series	Automotive, AEC-Q101	-	-	-
Capacitance @ Vr, F	50pF @ 0V, 1MHz	28pF @ 0V, 1MHz	50pF @ 0V, 1MHz	50pF @ 0V, 1MHz
Base Product Number	SD103	SD103A	SD103	SD103
Operating Temperature - Junction	-55°C ~ 150°C	-65°C ~ 125°C	-55°C ~ 150°C	-65°C ~ 125°C
Reverse Recovery Time (trr)	10 ns	10 ns	10 ns	10 ns
Speed	Fast Recovery =< 500ns, > 200mA (Io)	Fast Recovery =< 500ns, > 200mA (Io)	Fast Recovery =< 500ns, > 200mA (Io)	Fast Recovery =< 500ns, > 200mA (Io)
Voltage - Forward (Vf) (Max) @ If	600 mV @ 200 mA	600 mV @ 200 mA	600 mV @ 200 mA	600 mV @ 200 mA
Voltage - DC Reverse (Vr) (Max)	40 V	40 V	40 V	40 V
Supplier Device Package	SOD-323	SOD-323	SOD-323	SOD-323
Package / Case	SC-76, SOD-323	SC-76, SOD-323	SC-76, SOD-323	SC-76, SOD-323

SD103AWS-HE3-08 Datasheet PDF

Download SD103AWS-HE3-08 pdf datasheets and Vishay General Semiconductor - Diodes Division documentation for SD103AWS-HE3-08 - Vishay General Semiconductor - Diodes Division.

Datasheets

SD103xWS.pdf

Customers Also Interested in

Recommended Products



SD103AWSG-LS02
LISION



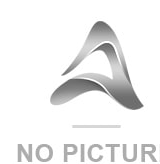
SD103AWS-7
Diodes Incorporated
DIODE SCHOTTKY 40V 350MA
SOD323



SD103AWS-V-G-08
Electro-Films (EFI) / Vishay



SD103AWS-V-GS08
Electro-Films (EFI) / Vishay



SD103AWS-H
SECOS



SD103AWS-LS01
LISION

**SD103AWS-G3-08**

Vishay General Semiconductor - Diodes Division
DIODE SCHOTTKY 40V 350MA SOD323

**SD103AWT-T**

DIODES/PANJIT/ON

**SD103AWS-GS08**

Electro-Films (EFI) / Vishay

**SD103AWS B3****SD103AWS-TP**

Micro Commercial Co
DIODE SCHOTTKY 40V 350MA SOD323

**SD103AWS-S4**

GC Electronics

**SD103AWH**

PANJIT

**SD103AWS-7-F**

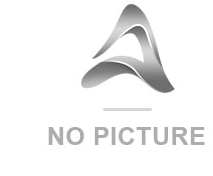
Diodes Incorporated
DIODE SCHOTTKY 40V 350MA SOD323

**SD103AWS-S3**

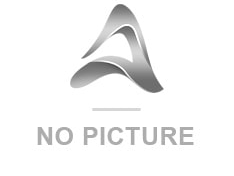
KEJIAXIN

**SD103AWS-E3-08**

Vishay General Semiconductor - Diodes Division
DIODE SCHOTTKY 40V 350MA SOD323

**SD103AWS**

ANBON SEMICONDUCTOR (INT'L) LIMITED
350MA SMALL SIGNAL SCHOTTKY DIOD

**SD103AWS S4**

CJ

Shipment

Delivery Time

In-stock items can be shipped within 24 hours. Some parts will be arranged for delivery within 1-2 days from the date all items arrive at our warehouse. And Allelco ships order once a day at about 17:00, except Sunday. Once the goods are shipped, the estimated delivery time depends on the shipping methods and Delivery destination. The table below shows are the logistic time for some common countries.

Delivery Cost

> Use your express account for shipment if you have one.

> Use our account for the shipment. Refer to the table below for the approximate charges.

(Different time frame / countries / package size has different price.)

Delivery Method

> Global Common Shipment by DHL / UPS / FedEx / TNT / EMS / SF we support.

> Others more shipping ways, please get in touch with your customer manager.

Common Countries Logistic Time Reference		
Region	Country	Logistic Time(Day)
America	United States	5
	Brazil	7
Europe	Germany	5
	United Kingdom	4
	Italy	5
Oceania	Australia	6
	New Zealand	7
Asia	India	6
	Japan	7
Middle East	Israel	6

DHL & FedEx Shipment Charges Reference	
Shipment charges(KG)	Reference DHL(USD\$)
0.00kg-1.00kg	USD\$60.00
1.00kg-2.00kg	USD\$70.00
2.00kg-3.00kg	USD\$80.00

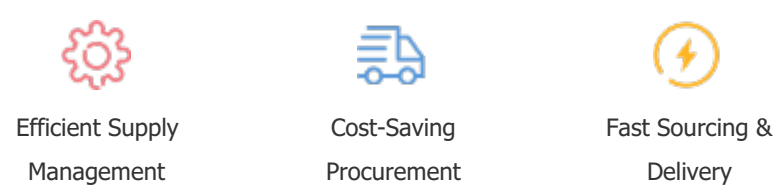
Note: The above table is for reference only. There may have some data bias for the uncontrollable factors.
Contact us if you have any questions.

Payment Support

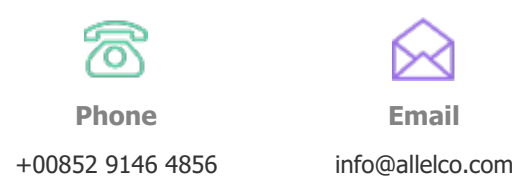
The payment method can be chosen from the methods shown below:
Wire Transfer (T/T, Bank Transfer), Western Union, Credit card, PayPal.



Your Faithful Supply Chain Partner -



Contact us if you have any questions.



Certifications & Memberships



[View More](#)