

Image may be representation.
See specifications for product details.



ES1DHE3_A/I

Manufacturer Part Number	ES1DHE3_A/I
Manufacturer	Vishay General Semiconductor – Diodes Division
Allelco Part Number	32D-ES1DHE3_A/I
ECAD Model	Request Free CAD Models
Parts Description	DIODE GEN PURP 200V 1A DO214AC
Package	DO-214AC, SMA
Data sheet	ES1A thru ES1D.pdf
RoHs Status	ROHS3 Compliant

Get a Quote

ES1DHE3_A/I - Vishay General Semiconductor - Diodes Division. New Original in Stock. Download Linear Technology ES1DHE3_A/I datasheet/specifications on AllelcoElec.com.
Request a quote for ES1DHE3_A/I, please send us email: info@allelco.com

Specifications

ES1DHE3_A/I Tech Specifications

ES1DHE3_A/I - Vishay General Semiconductor - Diodes Division technical specifications, attributes, parameters

Product Attribute	Attribute Value	Product Attribute	Attribute Value
Manufacturer	Vishay General Semiconductor – Diodes Division	Package / Case	DO-214AC, SMA
Voltage - Forward (Vf) (Max) @ If	920 mV @ 1 A	Package	Tape & Reel (TR)
Voltage - DC Reverse (Vr) (Max)	200 V	Operating Temperature - Junction	-55°C ~ 150°C
Technology	Standard	Mounting Type	Surface Mount
Supplier Device Package	DO-214AC (SMA)	Current - Reverse Leakage @ Vr	5 µA @ 200 V
Speed	Fast Recovery =< 500ns, > 200mA (Io)	Current - Average Rectified (Io)	1A
Series	Automotive, AEC-Q101	Capacitance @ Vr, F	10pF @ 4V, 1MHz
Reverse Recovery Time (trr)	25 ns	Base Product Number	ES1

Parts with Similar Specifications

The three parts on the right have similar specifications to Vishay General Semiconductor - Diodes Division ES1DHE3_A/I

Product Attribute				
Part Number	ES1DHE3_A/I	ES1DAF	ES1DAF	ES1DHE3_A/H
Manufacturer	Vishay General Semiconductor - Diodes Division	Fairchild Semiconductor	onsemi	Vishay General Semiconductor - Diodes Division
Technology	Standard	Standard	Standard	Standard
Series	Automotive, AEC-Q101	Automotive, AEC-Q101	Automotive, AEC-Q101	Automotive, AEC-Q101
Supplier Device Package	DO-214AC (SMA)	DO-214AD (SMAF)	DO-214AD (SMAF)	DO-214AC (SMA)
Current - Reverse Leakage @ Vr	5 µA @ 200 V	1 µA @ 200 V	1 µA @ 200 V	5 µA @ 200 V
Package / Case	DO-214AC, SMA	DO-214AD, SMAF	DO-214AD, SMAF	DO-214AC, SMA
Voltage - Forward (Vf) (Max) @ If	920 mV @ 1 A	950 mV @ 1 A	950 mV @ 1 A	920 mV @ 1 A
Mounting Type	Surface Mount	Surface Mount	Surface Mount	Surface Mount
Base Product Number	ES1	ES1D	ES1D	ES1
Package	Tape & Reel (TR)	Bulk	Tape & Reel (TR)	Tape & Reel (TR)
Speed	Fast Recovery =< 500ns, > 200mA (Io)	Fast Recovery =< 500ns, > 200mA (Io)	Fast Recovery =< 500ns, > 200mA (Io)	Fast Recovery =< 500ns, > 200mA (Io)
Voltage - DC Reverse (Vr) (Max)	200 V	200 V	200 V	200 V
Capacitance @ Vr, F	10pF @ 4V, 1MHz	15pF @ 4V, 1MHz	15pF @ 4V, 1MHz	10pF @ 4V, 1MHz
Current - Average Rectified (Io)	1A	1A	1A	1A
Operating Temperature - Junction	-55°C ~ 150°C	-55°C ~ 150°C	-55°C ~ 150°C	-55°C ~ 150°C
Reverse Recovery Time (trr)	25 ns	34 ns	34 ns	25 ns

ES1DHE3_A/I Datasheet PDF

Download ES1DHE3_A/I pdf datasheets and Vishay General Semiconductor - Diodes Division documentation for ES1DHE3_A/I - Vishay General Semiconductor - Diodes Division.

Datasheets

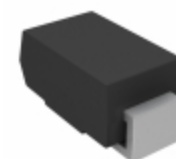
[ES1A thru ES1D.pdf](#)

PCN Assembly/Origin

[Assembly Site 26/Aug/2021.pdf](#)

Customers Also Interested in

Recommended Products



ES1DHE3-A/1

ES1D/13T

ES1DAF

ES1DAF

ES1DHE3_A/H

ES1D_NL

Electro-Films (EFI) / Vishay

VIS

Fairchild Semiconductor
DIODE GEN PURP 200V 1A DO214AD

onsemi
DIODE GEN PURP 200V 1A DO214AD

Vishay General Semiconductor - Diodes Division

Fairchild (onsemi)



NO PICTURE



NO PICTURE



NO PICTURE



ES1D_R1_00001
Panjit International Inc.
DIODE GEN PURP 200V 1A SMA

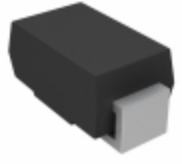
ES1DWG_R2_00001
PANJIT

ES1DF-AU
PANJIT

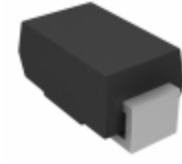
ES1D_HF
LITEON

ES1D_R1_00101-PEC
PANJIT

ES1FL R3
Taiwan Semiconductor



NO PICTURE



ES1DHE3/61T

Vishay General Semiconductor - Diodes Division
DIODE GEN PURP 200V 1A DO214AC

ES1DVR

Freescalo / NXP Semiconductors

ES1DF-AU_R1_000A1

PANJIT

ES1DHE3/5AT

Vishay General Semiconductor - Diodes Division
DIODE GEN PURP 200V 1A DO214AC

ES1DE-TPS02

Micro Commercial Components (MCC)

ES1DL RVG

TSC (Taiwan Semiconductor)
DIODE GEN PURP 200V 1A SUB SMA

Shipment

Delivery Time

In-stock items can be shipped within 24 hours. Some parts will be arranged for delivery within 1-2 days from the date all items arrive at our warehouse. And Allelco ships order once a day at about 17:00, except Sunday. Once the goods are shipped, the estimated delivery time depends on the shipping methods and Delivery destination. The table below shows are the logistic time for some common countries.

Delivery Cost

- > Use your express account for shipment if you have one.
 - > Use our account for the shipment. Refer to the table below for the approximate charges.
- (Different time frame / countries / package size has different price.)

Delivery Method

- > Global Common Shipment by DHL / UPS / FedEx / TNT / EMS / SF we support.
- > Others more shipping ways, please get in touch with your customer manager.

Common Countries Logistic Time Reference		
Region	Country	Logistic Time(Day)
America	United States	5
	Brazil	7
Europe	Germany	5
	United Kingdom	4
	Italy	5
Oceania	Australia	6
	New Zealand	7
Asia	India	6
	Japan	7
Middle East	Israel	6

DHL & FedEx Shipment Charges Reference	
Shipment charges(KG)	Reference DHL(USD\$)
0.00kg-1.00kg	USD\$60.00
1.00kg-2.00kg	USD\$70.00
2.00kg-3.00kg	USD\$80.00

Note: The above table is for reference only. There may have some data bias for the uncontrollable factors.
Contact us if you have any questions.

Payment Support

The payment method can be chosen from the methods shown below:
Wire Transfer (T/T, Bank Transfer), Western Union, Credit card, PayPal.



Your Faithful Supply Chain Partner -

- Efficient Supply Management
- Cost-Saving Procurement
- Fast Sourcing & Delivery

Contact us if you have any questions.

- Phone
+00852 9146 4856
- Email
info@allelco.com

Certifications & Memberships



[View More](#)

Contact us

Address: Flat/Rm C 13/F Harvard Commercial Building 105-111 Thomson Road, Wan Chai, Hong Kong
Phone: +00852 9146 4856
Fax: +00852 3010 8510
Email: info@Allelco.com