

Image may be representation.
See specifications for product details.



STPS2045CT

| | |
|--------------------------|----------------------------------|
| Manufacturer Part Number | STPS2045CT |
| Manufacturer | STMicroelectronics |
| Allelco Part Number | 32D-STPS2045CT |
| ECAD Model | PCB Symbol, Footprint & 3D Model |
| Parts Description | DIODE ARRAY SCHOTTKY 45V TO220AB |
| Package | TO-220-3 |
| Data sheet | STPS2045C.pdf |
| RoHs Status | ROHS3 Compliant |

Get a Quote

STPS2045CT - STMicroelectronics. New Original in Stock. Download Linear Technology STPS2045CT datasheet/specifications on AllelcoElec.com.
Request a quote for STPS2045CT, please send us email: info@allelco.com

Specifications

STPS2045CT Tech Specifications

STPS2045CT - STMicroelectronics technical specifications, attributes, parameters

| Product Attribute | Attribute Value | Product Attribute | Attribute Value |
|-----------------------------------|--------------------------------------|--|-----------------------|
| Manufacturer | STMicroelectronics | Package | Tube |
| Voltage - Forward (Vf) (Max) @ If | 570 mV @ 10 A | Operating Temperature - Junction | 175°C (Max) |
| Voltage - DC Reverse (Vr) (Max) | 45 V | Mounting Type | Through Hole |
| Technology | Schottky | Diode Configuration | 1 Pair Common Cathode |
| Supplier Device Package | TO-220 | Current - Reverse Leakage @ Vr | 100 µA @ 45 V |
| Speed | Fast Recovery =< 500ns, > 200mA (Io) | Current - Average Rectified (Io) (per Diode) | 10A |
| Series | - | Base Product Number | STPS2045 |
| Package / Case | TO-220-3 | | |

Parts with Similar Specifications

The three parts on the right have similar specifications to STMicroelectronics STPS2045CT

| Product Attribute | | | | |
|--|--------------------------------------|---|--------------------------------------|--|
| Part Number | STPS2045CT | STPS2045CR | STPS2030CT | STPS2045CG |
| Manufacturer | STMicroelectronics | STMicroelectronics | STMicroelectronics | STMicroelectronics |
| Technology | Schottky | Schottky | Schottky | Schottky |
| Voltage - DC Reverse (Vr) (Max) | 45 V | 45 V | 30 V | 45 V |
| Package / Case | TO-220-3 | TO-262-3 Long Leads, I ² Pak, TO-262AA | TO-220-3 | TO-263-3, D ² Pak (2 Leads + Tab), TO-263AB |
| Base Product Number | STPS2045 | STPS2045 | STPS2030 | STPS2045 |
| Supplier Device Package | TO-220 | I ² PAK | TO-220 | D ² PAK |
| Current - Average Rectified (Io) (per Diode) | 10A | 10A | 10A | 10A |
| Operating Temperature - Junction | 175°C (Max) | 175°C (Max) | 150°C (Max) | 175°C (Max) |
| Diode Configuration | 1 Pair Common Cathode | 1 Pair Common Cathode | 1 Pair Common Cathode | 1 Pair Common Cathode |
| Series | - | - | - | - |
| Current - Reverse Leakage @ Vr | 100 µA @ 45 V | 100 µA @ 45 V | 1 mA @ 30 V | 100 µA @ 45 V |
| Speed | Fast Recovery =< 500ns, > 200mA (Io) | Fast Recovery =< 500ns, > 200mA (Io) | Fast Recovery =< 500ns, > 200mA (Io) | Fast Recovery =< 500ns, > 200mA (Io) |
| Mounting Type | Through Hole | Through Hole | Through Hole | Surface Mount |
| Voltage - Forward (Vf) (Max) @ If | 570 mV @ 10 A | 570 mV @ 10 A | 500 mV @ 10 A | 570 mV @ 10 A |
| Package | Tube | Tube | Tube | Tube |

STPS2045CT Datasheet PDF

Download STPS2045CT pdf datasheets and STMicroelectronics documentation for STPS2045CT - STMicroelectronics.

Datasheets

[STPS2045C.pdf](#)

PCN Packaging

[Box Label Chg 28/Jul/2016.pdf](#)

PCN Design/Specification

[Mult Dev Adv Material Notice 8/Apr/2019.pdf](#)

PCN Assembly/Origin

[Mult Dev Mold Compound Chg 1/May/2019.pdf](#)

Customers Also Interested in

Recommended Products



STPS2045CG/SP2045
HY



STPS2045CR
STMicroelectronics
DIODE ARRAY SCHOTTKY 45V I2PAK



STPS2030CT
STMicroelectronics
DIODE ARRAY SCHOTTKY 30V TO220AB



STPS20300CFP
STMicroelectronics



STPS2045CG
STMicroelectronics
DIODE ARRAY SCHOTTKY 45V D2PAK



STPS20H100CFP
STMicroelectronics
DIODE ARRAY SCHOTTKY 100V TO220F



STPS20H100CG-TR
STMicroelectronics
DIODE ARRAY SCHOTTKY 100V D2PAK



STPS2045CF
STMicroelectronics



STPS2060CT
STMicroelectronics
DIODE ARRAY SCHOTTKY 60V TO220AB



STPS2045CGY-TR
STMicroelectronics
DIODE ARRAY SCHOTTKY 45V D2PAK



STPS20H100CR
STMicroelectronics
DIODE ARRAY SCHOTTKY 100V I2PAK



STPS20H100CT
STMicroelectronics
DIODE ARRAY SCHOTTKY 100V TO220



STPS2045CTC
STMicroelectronics
Automotive 45 V, 20 A dual Power



STPS20H100CGY-TR
STMicroelectronics
DIODE ARRAY SCHOTTKY 100V D2PAK



STPS2045CG-TR
STMicroelectronics
DIODE ARRAY SCHOTTKY 45V D2PAK



STPS2045CFP
STMicroelectronics
DIODE ARRAY SCHOTTKY 45V TO220FP



STPS2045-CT
STMicroelectronics



STPS20H100CG
STMicroelectronics
DIODE ARRAY SCHOTTKY 100V D2PAK

Shipment

Delivery Time

In-stock items can be shipped within 24 hours. Some parts will be arranged for delivery within 1-2 days from the date all items arrive at our warehouse. And Allelco ships order once a day at about 17:00, except Sunday. Once the goods are shipped, the estimated delivery time depends on the shipping methods and Delivery destination. The table below shows are the logistic time for some common countries.

Delivery Cost

- > Use your express account for shipment if you have one.
 - > Use our account for the shipment. Refer to the table below for the approximate charges.
- (Different time frame / countries / package size has different price.)

Delivery Method

- > Global Common Shipment by DHL / UPS / FedEx / TNT / EMS / SF we support.
- > Others more shipping ways, please get in touch with your customer manager.

| Common Countries Logistic Time Reference | | |
|--|----------------|--------------------|
| Region | Country | Logistic Time(Day) |
| America | United States | 5 |
| | Brazil | 7 |
| Europe | Germany | 5 |
| | United Kingdom | 4 |
| | Italy | 5 |
| Oceania | Australia | 6 |
| | New Zealand | 7 |
| Asia | India | 6 |
| | Japan | 7 |
| Middle East | Israel | 6 |

| DHL & FedEx Shipment Charges Reference | |
|--|----------------------|
| Shipment charges(KG) | Reference DHL(USD\$) |
| 0.00kg-1.00kg | USD\$60.00 |
| 1.00kg-2.00kg | USD\$70.00 |
| 2.00kg-3.00kg | USD\$80.00 |

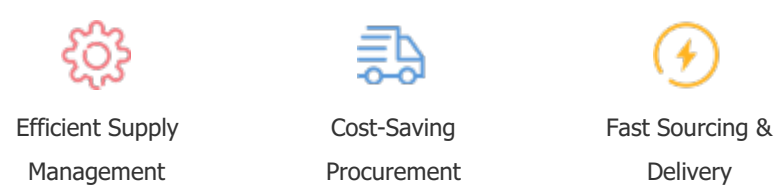
Note: The above table is for reference only. There may have some data bias for the uncontrollable factors. Contact us if you have any questions.

Payment Support

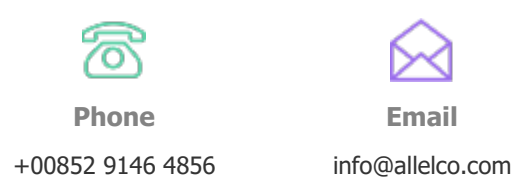
The payment method can be chosen from the methods shown below:
Wire Transfer (T/T, Bank Transfer), Western Union, Credit card, PayPal.



Your Faithful Supply Chain Partner -



Contact us if you have any questions.



Certifications & Memberships



[View More](#)

Contact us

Address: Flat/Rm C 13/F Harvard Commercial Building 105-111 Thomson Road, Wan Chai, Hong Kong
Phone: +00852 9146 4856
Fax: +00852 3010 8510
Email: info@Allelco.com