

Image may be representation.
See specifications for product details.



EP1S20F780C7N

Manufacturer Part Number	EP1S20F780C7N
Manufacturer	Intel
Allelco Part Number	32D-EP1S20F780C7N
ECAD Model	PCB Symbol, Footprint & 3D Mode
Parts Description	IC FPGA 586 I/O 780FBGA
Package	780-BBGA, FCBGA
Data sheet	Virtual JTAG Megafuntion Guide.pdf 780-FBGA Pkg Info.pdf Stratix Device Datasheet.pdf Stratix Device Handbook.pdf

Get a Quote

EP1S20F780C7N - Intel.New Original in Stock. Download Linear Technology EP1S20F780C7N datasheet/specifications on AllelcoElec.com.
Request a quote for EP1S20F780C7N, please send us email: info@allelco.com

Specifications

EP1S20F780C7N Tech Specifications

EP1S20F780C7N - Intel technical specifications, attributes, parameters

Product Attribute	Attribute Value	Product Attribute	Attribute Value
Manufacturer	Intel	Operating Temperature	0°C ~ 85°C (TJ)
Voltage - Supply	1.425V ~ 1.575V	Number of Logic Elements/Cells	18460
Total RAM Bits	1669248	Number of LABs/CLBs	1846
Supplier Device Package	780-FBGA (29x29)	Number of I/O	586
Series	Stratix®	Mounting Type	Surface Mount
Package / Case	780-BBGA, FCBGA	Base Product Number	EP1S20
Package	Tray		

Parts with Similar Specifications

The three parts on the right have similar specifications to Intel EP1S20F780C7N

Product Attribute				
Part Number	EP1S20F780C7N	EP1S20F780C6	EP1S25F1020C5	EP1S20F780I6
Manufacturer	Intel	Intel	Intel	Intel
Total RAM Bits	1669248	1669248	1944576	1669248
Base Product Number	EP1S20	EP1S20	EP1S25	EP1S20
Voltage - Supply	1.425V ~ 1.575V	1.425V ~ 1.575V	1.425V ~ 1.575V	1.425V ~ 1.575V
Package / Case	780-BBGA, FCBGA	780-BBGA, FCBGA	1020-BBGA	780-BBGA, FCBGA
Number of Logic Elements/Cells	18460	18460	25660	18460
Number of LABs/CLBs	1846	1846	2566	1846
Supplier Device Package	780-FBGA (29x29)	780-FBGA (29x29)	1020-FBGA (33x33)	780-FBGA (29x29)
Series	Stratix®	Stratix®	Stratix®	Stratix®
Operating Temperature	0°C ~ 85°C (TJ)	0°C ~ 85°C (TJ)	0°C ~ 85°C (TJ)	-40°C ~ 100°C (TJ)
Package	Tray	Tray	Tray	Tray
Mounting Type	Surface Mount	Surface Mount	Surface Mount	Surface Mount
Number of I/O	586	586	706	586

EP1S20F780C7N Datasheet PDF

Download EP1S20F780C7N pdf datasheets and Intel documentation for EP1S20F780C7N - Intel.

Datasheets

[Virtual JTAG Megafuntion Guide.pdf](#)

[780-FBGA Pkg Info.pdf](#)

[Stratix Device Datasheet.pdf](#)

[Stratix Device Handbook.pdf](#)

PCN Packaging

[All Dev Pkg Chg 1/Aug/2018.pdf](#)

[Mult Dev Dessicant Chg 19/Jul/2019.pdf](#)

PCN Design/Specification

[Mult Series Software Chgs 26/Mar/2020.pdf](#)

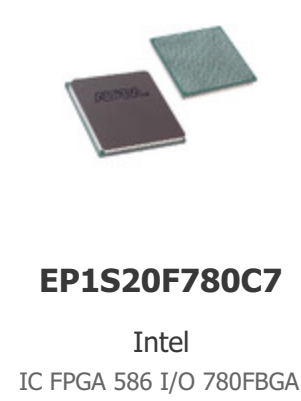
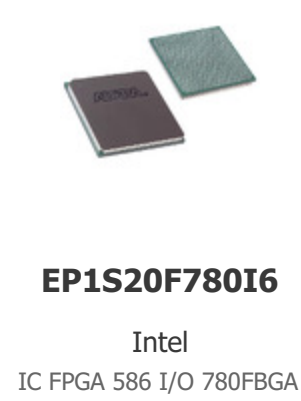
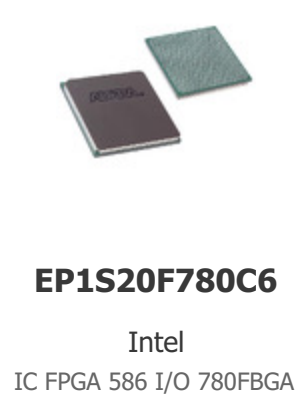
[Package Height 03/March/2008.pdf](#)

PCN Obsolescence/ EOL

[Mult Device EOL 1/Jun/2017.pdf](#)

Customers Also Interested in

Recommended Products



Shipment

Delivery Time

In-stock items can be shipped within 24 hours. Some parts will be arranged for delivery within 1-2 days from the date all items arrive at our warehouse. And Allelco ships order once a day at about 17:00, except Sunday. Once the goods are shipped, the estimated delivery time depends on the shipping methods and Delivery destination. The table below shows are the logistic time for some common countries.

Delivery Cost

- > Use your express account for shipment if you have one.
 - > Use our account for the shipment. Refer to the table below for the approximate charges.
- (Different time frame / countries / package size has different price.)

Delivery Method

- > Global Common Shipment by DHL / UPS / FedEx / TNT / EMS / SF we support.
- > Others more shipping ways, please get in touch with your customer manager.

Common Countries Logistic Time Reference		
Region	Country	Logistic Time(Day)
America	United States	5
	Brazil	7
Europe	Germany	5
	United Kingdom	4
	Italy	5
Oceania	Australia	6
	New Zealand	7
Asia	India	6
	Japan	7
Middle East	Israel	6

DHL & FedEx Shipment Charges Reference	
Shipment charges(KG)	Reference DHL(USD\$)
0.00kg-1.00kg	USD\$60.00
1.00kg-2.00kg	USD\$70.00
2.00kg-3.00kg	USD\$80.00

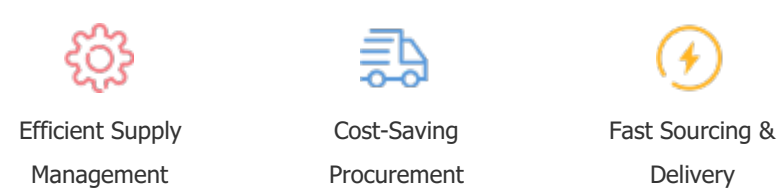
Note: The above table is for reference only. There may have some data bias for the uncontrollable factors.
Contact us if you have any questions.

Payment Support

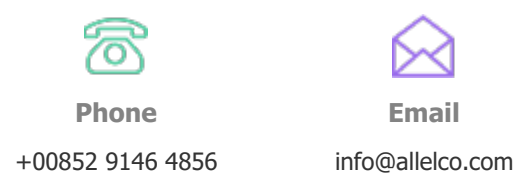
The payment method can be chosen from the methods shown below:
Wire Transfer (T/T, Bank Transfer), Western Union, Credit card, PayPal.



Your Faithful Supply Chain Partner -



Contact us if you have any questions.



Certifications & Memberships



[View More](#)

Contact us

Address: Flat/Rm C 13/F Harvard Commercial Building 105-111 Thomson Road, Wan Chai, Hong Kong

Phone: +00852 9146 4856

Fax: +00852 3010 8510

Email: info@Allelco.com