

Image may be representation.  
See specifications for product details.



## ADP3418JR-REEL

Manufacturer Part Number	<b>ADP3418JR-REEL</b>
Manufacturer	<b>Analog Devices, Inc.</b>
Allelco Part Number	32D-ADP3418JR-REEL
ECAD Model	Request Free CAD Models
Parts Description	DUAL BOOSTRAPPED 12V MOSFET DRIV
Package	8-SOIC (0.154", 3.90mm Width)
Data sheet	ADP3418JR-REEL.pdf

**Get a Quote**

ADP3418JR-REEL - Analog Devices Inc..New Original in Stock. Download Linear Technology ADP3418JR-REEL datasheet/specifications on AllelcoElec.com.  
Request a quote for ADP3418JR-REEL, please send us email: [info@allelco.com](mailto:info@allelco.com)

### Specifications

ADP3418JR-REEL Tech Specifications

ADP3418JR-REEL - Analog Devices Inc. technical specifications, attributes, parameters

Product Attribute	Attribute Value	Product Attribute	Attribute Value
Manufacturer	Analog Devices, Inc.	Mounting Type	Surface Mount
Voltage - Supply	4.15V ~ 13.2V	Logic Voltage - VIL, VIH	0.8V, 2.8V
Supplier Device Package	8-SOIC	Input Type	Inverting, Non-Inverting
Series	-	Gate Type	N-Channel, P-Channel MOSFET
Rise / Fall Time (Typ)	-	Driven Configuration	High-Side
Package / Case	8-SOIC (0.154", 3.90mm Width)	Current - Peak Output (Source, Sink)	-
Package	Bulk	Channel Type	Synchronous
Operating Temperature	0°C ~ 85°C (TA)	Base Product Number	ADP3418
Number of Drivers	2		

### Parts with Similar Specifications

The three parts on the right have similar specifications to Analog Devices Inc. ADP3418JR-REEL

Product Attribute				
Part Number	ADP3418JR-REEL	ADP3418JRZ	ADP3417JR	ADP3418JR
Manufacturer	Analog Devices Inc.	Analog Devices Inc.	Analog Devices Inc.	Analog Devices Inc.
Voltage - Supply	4.15V ~ 13.2V	4.15V ~ 13.2V	4.15V ~ 13.2V	4.15V ~ 13.2V
Mounting Type	Surface Mount	Surface Mount	Surface Mount	Surface Mount
Package / Case	8-SOIC (0.154", 3.90mm Width)	8-SOIC (0.154", 3.90mm Width)	8-SOIC (0.154", 3.90mm Width)	8-SOIC (0.154", 3.90mm Width)
Operating Temperature	0°C ~ 85°C (TA)	0°C ~ 85°C (TA)	0°C ~ 125°C (TJ)	0°C ~ 85°C (TA)
Logic Voltage - VIL, VIH	0.8V, 2.8V	0.8V, 2.8V	0.8V, 2.5V	0.8V, 2.8V
Number of Drivers	2	2	2	2
Driven Configuration	High-Side	High-Side	High-Side	High-Side
Channel Type	Synchronous	Synchronous	Synchronous	Synchronous
Base Product Number	ADP3418	ADP3418	ADP3417	ADP3418
Supplier Device Package	8-SOIC	8-SOIC	8-SOIC	8-SOIC
Rise / Fall Time (Typ)	-	-	-	-
Series	-	-	ADP3417	-
Input Type	Inverting, Non-Inverting	Inverting, Non-Inverting	Inverting, Non-Inverting	Inverting, Non-Inverting
Package	Bulk	Bulk	Bulk	Bulk
Current - Peak Output (Source, Sink)	-	-	-	-
Gate Type	N-Channel, P-Channel MOSFET	N-Channel, P-Channel MOSFET	N-Channel MOSFET	N-Channel, P-Channel MOSFET

### Customers Also Interested in

#### Recommended Products



**ADP3418KRZ**

ADI (Analog Devices, Inc.)



**ADP34190091RMZR**

AMI Semiconductor/onsemi



**ADP3418JRZ**

Analog Devices Inc.  
DUAL 12V MOSFET DRIVER



NO PICTURE

**ADP3418KRZ-REEL**

ADI/PBF



**ADP3417JR**

Analog Devices Inc.  
DUAL BOOTSTRAPPED MOSFET DRIVER



**ADP3418JR**

Analog Devices Inc.  
DUAL BOOSTRAPPED 12V MOSFET DRIV



**ADP3416J**

ADI (Analog Devices, Inc.)



**ADP3416JR**

Analog Devices Inc.  
DUAL BOOTSTRAPPED MOSFET DRIVER



**ADP3418K**

ADI (Analog Devices, Inc.)



**ADP3417J**

ADI (Analog Devices, Inc.)



**ADP3418JRZ-REEL**

ADI (Analog Devices, Inc.)



**ADP3418**

ADI (Analog Devices, Inc.)



### ADP3416JRZ

ADI (Analog Devices, Inc.)

### ADP3417JR-REEL

Analog Devices Inc.  
DUAL BOOTSTRAPPED MOSFET DRIVER

### ADP3418KR

ADI (Analog Devices, Inc.)

### ADP3418JR-REEL7

Analog Devices Inc.  
IC MOS DVR W/DISABLE 12V 8-SOIC

### ADP3416JR-REEL

Analog Devices Inc.  
DUAL BOOTSTRAPPED MOSFET DRIVER

### ADP3418J

NA

## Shipment

### Delivery Time

In-stock items can be shipped within 24 hours. Some parts will be arranged for delivery within 1-2 days from the date all items arrive at our warehouse. And Allelco ships order once a day at about 17:00, except Sunday. Once the goods are shipped, the estimated delivery time depends on the shipping methods and Delivery destination. The table below shows are the logistic time for some common countries.

### Delivery Cost

> Use your express account for shipment if you have one.

> Use our account for the shipment. Refer to the table below for the approximate charges.

(Different time frame / countries / package size has different price.)

### Delivery Method

> Global Common Shipment by DHL / UPS / FedEx / TNT / EMS / SF we support.

> Others more shipping ways, please get in touch with your customer manager.

Common Countries Logistic Time Reference

Region	Country	Logistic Time(Day)
America	United States	5
	Brazil	7
Europe	Germany	5
	United Kingdom	4
	Italy	5
Oceania	Australia	6
	New Zealand	7
Asia	India	6
	Japan	7
Middle East	Israel	6

DHL & FedEx Shipment Charges Reference

Shipment charges(KG)	Reference DHL(USD\$)
0.00kg-1.00kg	USD\$60.00
1.00kg-2.00kg	USD\$70.00
2.00kg-3.00kg	USD\$80.00

Note: The above table is for reference only. There may have some data bias for the uncontrollable factors.  
Contact us if you have any questions.

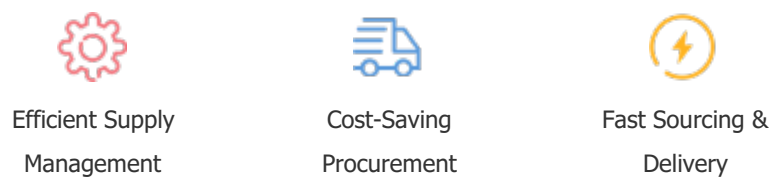
### Payment Support

The payment method can be chosen from the methods shown below:

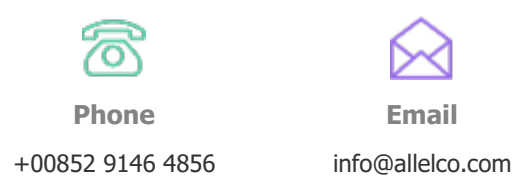
Wire Transfer (T/T, Bank Transfer), Western Union, Credit card, PayPal.



### Your Faithful Supply Chain Partner -



Contact us if you have any questions.



### Certifications & Memberships



[View More](#)



### Contact us

Address: Flat/Rm C 13/F Harvard Commercial Building 105-111 Thomson Road, Wan Chai, Hong Kong

Phone: +00852 9146 4856

Fax: +00852 3010 8510

Email: info@Allelco.com

Copyright © 2012-2023 AllelcoElec.com. All rights reserved.