



Image may be representation.  
See specifications for product details.



## STM6322TWY6F

Manufacturer Part Number	<b>STM6322TWY6F</b>
Manufacturer	<b>STMicroelectronics</b>
Allelco Part Number	32D-STM6322TWY6F
ECAD Model	PCB Symbol, Footprint & 3D Mode
Parts Description	IC SUPERVISOR 1 CHANNEL SOT23-5
Package	SC-74A, SOT-753
Data sheet	<b>STM6321-22, STM6821-25.pdf</b>
RoHs Status	<b>ROHS3 Compliant</b>

**Get a Quote**

STM6322TWY6F - STMicroelectronics.New Original in Stock. Download Linear Technology STM6322TWY6F datasheet/specifications on AllelcoElec.com.  
Request a quote for STM6322TWY6F, please send us email: [info@allelco.com](mailto:info@allelco.com)

### Specifications

STM6322TWY6F Tech Specifications

STM6322TWY6F - STMicroelectronics technical specifications, attributes, parameters

Product Attribute	Attribute Value	Product Attribute	Attribute Value
Manufacturer	STMicroelectronics	Package / Case	SC-74A, SOT-753
Voltage - Threshold	3.08V	Package	Tape & Reel (TR)
Type	Simple Reset/Power-On Reset	Output	Open Drain, Push-Pull
Supplier Device Package	SOT-23-5	Operating Temperature	-40°C ~ 85°C (TA)
Series	-	Number of Voltages Monitored	1
Reset Timeout	140ms Minimum	Mounting Type	Surface Mount
Reset	Active High/Active Low	Base Product Number	STM6322

### Parts with Similar Specifications

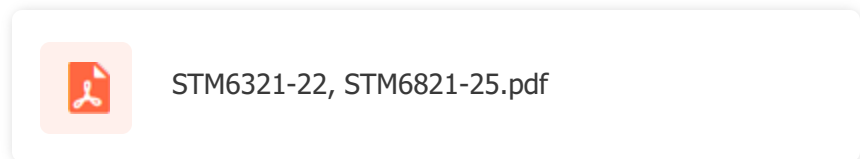
The three parts on the right have similar specifications to STMicroelectronics STM6322TWY6F

Product Attribute				
Part Number	STM6322TWY6F	STM6510SCACDG6F	STM6321LWY6F	STM6321RWY6F
Manufacturer	STMicroelectronics	STMicroelectronics	STMicroelectronics	STMicroelectronics
Reset	Active High/Active Low	Active Low	Active High/Active Low	Active High/Active Low
Package / Case	SC-74A, SOT-753	8-WDFDN	SC-74A, SOT-753	SC-74A, SOT-753
Output	Open Drain, Push-Pull	Open Drain or Open Collector	Open Drain, Push-Pull	Open Drain, Push-Pull
Series	-	Smart Reset™	-	-
Type	Simple Reset/Power-On Reset	Reset Timer	Simple Reset/Power-On Reset	Simple Reset/Power-On Reset
Number of Voltages Monitored	1	1	1	1
Mounting Type	Surface Mount	Surface Mount	Surface Mount	Surface Mount
Package	Tape & Reel (TR)	Tape & Reel (TR)	Tape & Reel (TR)	Tape & Reel (TR)
Operating Temperature	-40°C ~ 85°C (TA)	-40°C ~ 85°C (TA)	-40°C ~ 85°C (TA)	-40°C ~ 85°C (TA)
Base Product Number	STM6322	STM6510	STM6321	STM6321
Supplier Device Package	SOT-23-5	8-TDFN (2x2)	SOT-23-5	SOT-23-5
Reset Timeout	140ms Minimum	Adjustable/Selectable	140ms Minimum	140ms Minimum
Voltage - Threshold	3.08V	2.925V	4.63V	2.63V

### STM6322TWY6F Datasheet PDF

Download STM6322TWY6F pdf datasheets and STMicroelectronics documentation for STM6322TWY6F - STMicroelectronics.

#### HTML Datasheet



### Customers Also Interested in

#### Recommended Products



**STM6510SCACDG6F**  
STMicroelectronics  
IC SUPERVISOR 1 CHANNEL 8TDFN



**STM6321LWY6F**  
STMicroelectronics  
IC SUPERVISOR 1 CHANNEL SOT23-5



**STM6321RWY6F**  
STMicroelectronics  
IC SUPERVISOR 1 CHANNEL SOT23-5



**STM6510RCACDG6F**  
STMicroelectronics  
IC SUPERVISOR 1 CHANNEL 8TDFN



**STM6321MWY6F**  
STMicroelectronics  
IC SUPERVISOR 1 CHANNEL SOT23-5



**STM6322MWY6F**  
STMicroelectronics  
IC SUPERVISOR 1 CHANNEL SOT23-5



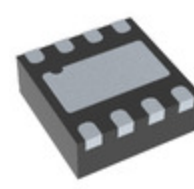
**STM6321SWY6F**  
STMicroelectronics  
IC SUPERVISOR 1 CHANNEL SOT23-5



**STM6322LWY6F**  
STMicroelectronics  
IC SUPERVISOR 1 CHANNEL SOT23-5



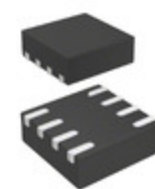
**STM6503SEAADG6F**  
STMicroelectronics  
IC SUPERVISOR 1 CHANNEL 8TDFN



**STM6513SEIEDG6F**  
STMicroelectronics  
IC SUPERVISOR 1 CHANNEL 8TDFN



**STM6322SWY6F**  
STMicroelectronics  
IC SUPERVISOR 1 CHANNEL SOT23-5



**STM6510WCACDG6F**  
STMicroelectronics  
IC SUPERVISOR 1 CHANNEL 8TDFN

**STM6513VEIEDG6F**STMicroelectronics  
IC SUPERVISOR 1 CHANNEL 8TDFN**STM6321TWY6F**STMicroelectronics  
IC SUPERVISOR 1 CHANNEL SOT23-5**STM6503VEAADG6F**STMicroelectronics  
IC SUPERVISOR 1 CHANNEL 8TDFN**STM6503REAADG6F**Nexperia USA Inc.  
STM6503R - Supervisory Circuit 2**STM6322RWY6F**STMicroelectronics  
IC SUPERVISOR 1 CHANNEL SOT23-5**STM6503REAADG6F**STMicroelectronics  
IC SUPERVISOR 1 CHANNEL 8TDFN

## Shipment

### Delivery Time

In-stock items can be shipped within 24 hours. Some parts will be arranged for delivery within 1-2 days from the date all items arrive at our warehouse. And Allelco ships order once a day at about 17:00, except Sunday. Once the goods are shipped, the estimated delivery time depends on the shipping methods and Delivery destination. The table below shows are the logistic time for some common countries.

### Delivery Cost

- > Use your express account for shipment if you have one.
  - > Use our account for the shipment. Refer to the table below for the approximate charges.
- (Different time frame / countries / package size has different price.)

### Delivery Method

- > Global Common Shipment by DHL / UPS / FedEx / TNT / EMS / SF we support.
- > Others more shipping ways, please get in touch with your customer manager.

Common Countries Logistic Time Reference		
Region	Country	Logistic Time(Day)
America	United States	5
	Brazil	7
Europe	Germany	5
	United Kingdom	4
	Italy	5
Oceania	Australia	6
	New Zealand	7
Asia	India	6
	Japan	7
Middle East	Israel	6

DHL & FedEx Shipment Charges Reference	
Shipment charges(KG)	Reference DHL(USD\$)
0.00kg-1.00kg	USD\$60.00
1.00kg-2.00kg	USD\$70.00
2.00kg-3.00kg	USD\$80.00

**Note:** The above table is for reference only. There may have some data bias for the uncontrollable factors.  
Contact us if you have any questions.

## Payment Support

The payment method can be chosen from the methods shown below:  
Wire Transfer (T/T, Bank Transfer), Western Union, Credit card, PayPal.



## Your Faithful Supply Chain Partner -

- Efficient Supply Management
- Cost-Saving Procurement
- Fast Sourcing & Delivery

Contact us if you have any questions.

- Phone  
+00852 9146 4856
- Email  
info@allelco.com

## Certifications & Memberships



[View More](#)



### Contact us

Address: Flat/Rm C 13/F Harvard Commercial Building 105-111 Thomson Road, Wan Chai, Hong Kong  
 Phone: +00852 9146 4856  
 Fax: +00852 3010 8510  
 Email: info@Allelco.com