

Image may be representation.
See specifications for product details.



XCS40-3BG256C

Manufacturer Part Number	XCS40-3BG256C
Manufacturer	AMD Xilinx
Allelco Part Number	32D-XCS40-3BG256C
ECAD Model	Request Free CAD Models
Parts Description	IC FPGA 205 I/O 256BGA
Package	256-BBGA
Data sheet	XCS40-3BG256C.pdf

Get a Quote

XCS40-3BG256C - AMD,New Original in Stock. Download Linear Technology XCS40-3BG256C datasheet/specifications on AllelcoElec.com.
Request a quote for XCS40-3BG256C, please send us email: info@allelco.com

Specifications

XCS40-3BG256C Tech Specifications
XCS40-3BG256C - AMD technical specifications, attributes, parameters

Product Attribute	Attribute Value	Product Attribute	Attribute Value
Manufacturer	AMD Xilinx	Operating Temperature	0°C ~ 85°C (TJ)
Voltage - Supply	4.75V ~ 5.25V	Number of Logic Elements/Cells	1862
Total RAM Bits	25088	Number of LABs/CLBs	784
Supplier Device Package	256-PBGA (27x27)	Number of I/O	205
Series	Spartan®	Number of Gates	40000
Package / Case	256-BBGA	Mounting Type	Surface Mount
Package	Tray	Base Product Number	XCS40

Parts with Similar Specifications

The three parts on the right have similar specifications to AMD XCS40-3BG256C

Product Attribute				
Part Number	XCS40-3BG256C	XCS40-3PQ208C	XCS30XL-5TQ144C	XCS30XL-5VQ100C
Manufacturer	AMD	AMD	AMD	AMD
Voltage - Supply	4.75V ~ 5.25V	4.75V ~ 5.25V	3V ~ 3.6V	3V ~ 3.6V
Number of LABs/CLBs	784	784	576	576
Base Product Number	XCS40	XCS40	XCS30XL	XCS30XL
Number of Gates	40000	40000	30000	30000
Total RAM Bits	25088	25088	18432	18432
Operating Temperature	0°C ~ 85°C (TJ)	0°C ~ 85°C (TJ)	0°C ~ 85°C (TJ)	0°C ~ 85°C (TJ)
Supplier Device Package	256-PBGA (27x27)	208-PQFP (28x28)	144-TQFP (20x20)	100-VQFP (14x14)
Number of Logic Elements/Cells	1862	1862	1368	1368
Package / Case	256-BBGA	208-BFQFP	144-LQFP	100-TQFP
Package	Tray	Tray	Tray	Tray
Series	Spartan®	Spartan®	Spartan®-XL	Spartan®-XL
Mounting Type	Surface Mount	Surface Mount	Surface Mount	Surface Mount
Number of I/O	205	169	113	77

XCS40-3BG256C Datasheet PDF

Download XCS40-3BG256C pdf datasheets and AMD documentation for XCS40-3BG256C - AMD.

Environmental Information

[Xilinx REACH211 Cert.pdf](#)

PCN Obsolescence/ EOL

[Spartan,Virtex FPGA/SCD 18/Oct/2010.pdf](#)

Customers Also Interested in

Recommended Products



XCS40-4PQG208C
AMD Xilinx

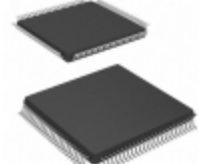
XCS30XL-5VQG100C
XILIX

XCS30XLPQ240C
AMD Xilinx

XCS30XLPQ208
AMD Xilinx

XCS40-3PQ208C
AMD
IC FPGA 169 I/O 208QFP

XCS40-5PQ208C
AMD Xilinx



XCS3S200AVQG100

EXILINX

XCS40-3PQG208I

AMD Xilinx

XCS30XL-5TQ144C

AMD
IC FPGA 113 I/O 144TQFP

XCS30XLPQ240-4C

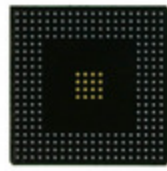
AMD Xilinx

XCS30XL-5VQ100C

AMD
IC FPGA 77 I/O 100VQFP

XCS40 PQ208

AMD Xilinx



XCS30XLPQ240A

AMD Xilinx

XCS40-4BG256C

AMD
IC FPGA 205 I/O 256BGA

XCS40-3PQ208I

AMD
IC FPGA 169 I/O 208QFP

XCS40-3PQ240C

AMD
IC FPGA 192 I/O 240QFP

XCS40-4PQ240C

AMD
IC FPGA 192 I/O 240QFP

XCS40-4PQ208C

AMD
IC FPGA 169 I/O 208QFP

Shipment

Delivery Time

In-stock items can be shipped within 24 hours. Some parts will be arranged for delivery within 1-2 days from the date all items arrive at our warehouse. And Allelco ships order once a day at about 17:00, except Sunday. Once the goods are shipped, the estimated delivery time depends on the shipping methods and Delivery destination. The table below shows are the logistic time for some common countries.

Delivery Cost

> Use your express account for shipment if you have one.

> Use our account for the shipment. Refer to the table below for the approximate charges.

(Different time frame / countries / package size has different price.)

Delivery Method

> Global Common Shipment by DHL / UPS / FedEx / TNT / EMS / SF we support.

> Others more shipping ways, please get in touch with your customer manager.

Common Countries Logistic Time Reference

Region	Country	Logistic Time(Day)
America	United States	5
	Brazil	7
Europe	Germany	5
	United Kingdom	4
	Italy	5
Oceania	Australia	6
	New Zealand	7
Asia	India	6
	Japan	7
Middle East	Israel	6

DHL & FedEx Shipment Charges Reference

Shipment charges(KG)	Reference DHL(USD\$)
0.00kg-1.00kg	USD\$60.00
1.00kg-2.00kg	USD\$70.00
2.00kg-3.00kg	USD\$80.00

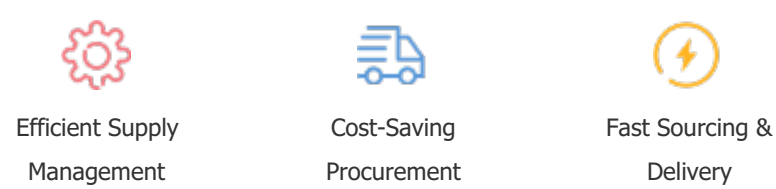
Note: The above table is for reference only. There may have some data bias for the uncontrollable factors.
Contact us if you have any questions.

Payment Support

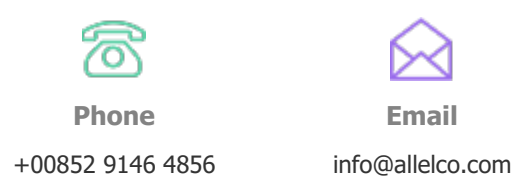
The payment method can be chosen from the methods shown below:
Wire Transfer (T/T, Bank Transfer), Western Union, Credit card, PayPal.



Your Faithful Supply Chain Partner -



Contact us if you have any questions.



Certifications & Memberships



View More



Contact us

Address: Flat/Rm C 13/F Harvard Commercial Building 105-111 Thomson Road, Wan Chai, Hong Kong

Phone: +00852 9146 4856

Fax: +00852 3010 8510

Email: info@allelco.com

Copyright © 2012-2023 AllelcoElec.com. All rights reserved.