

Image may be representation.
See specifications for product details.



MAX4053ACSE

Manufacturer Part Number	MAX4053ACSE
Manufacturer	Maxim Integrated
Allelco Part Number	32D-MAX4053ACSE
ECAD Model	Request Free CAD Models
Parts Description	IC SWITCH SPDT X 3 100OHM 16SOIC
Package	16-SOIC (0.154", 3.90mm Width)
Data sheet	MAX4051(A)-53(A).pdf

Get a Quote

MAX4053ACSE - Analog Devices Inc./Maxim Integrated. New Original in Stock. Download Linear Technology MAX4053ACSE datasheet/specifications on AllelcoElec.com. Request a quote for MAX4053ACSE, please send us email: info@allelco.com

Specifications

MAX4053ACSE Tech Specifications

MAX4053ACSE - Analog Devices Inc./Maxim Integrated technical specifications, attributes, parameters

Product Attribute	Attribute Value	Product Attribute	Attribute Value
Manufacturer	Maxim Integrated	Number of Circuits	3
Voltage - Supply, Single (V+)	2V ~ 16V	Multiplexer/Demultiplexer Circuit	2:1
Voltage - Supply, Dual (V±)	±2.7V ~ 8V	Mounting Type	Surface Mount
Switch Time (Ton, Toff) (Max)	175ns, 150ns	Current - Leakage (IS(off)) (Max)	100pA
Switch Circuit	SPDT	Crosstalk	-90dB @ 100kHz
Supplier Device Package	16-SOIC	Charge Injection	2pC
Series	-	Channel-to-Channel Matching (ΔRon)	60hm (Max)
Package / Case	16-SOIC (0.154", 3.90mm Width)	Channel Capacitance (CS(off), CD(off))	2pF, 2pF
Package	Tube	Base Product Number	MAX4053
Operating Temperature	0°C ~ 70°C (TA)	-3db Bandwidth	-
On-State Resistance (Max)	1000hm		

Parts with Similar Specifications

The three parts on the right have similar specifications to Analog Devices Inc./Maxim Integrated MAX4053ACSE

Product Attribute				
Part Number	MAX4053ACSE	MAX4053CSE	MAX4052ESE	MAX4053CEE+T
Manufacturer	Analog Devices Inc./Maxim Integrated	Analog Devices Inc./Maxim Integrated	Analog Devices Inc./Maxim Integrated	Analog Devices Inc./Maxim Integrated
Base Product Number	MAX4053	MAX4053	MAX4052	MAX4053
Channel-to-Channel Matching (ΔRon)	60hm (Max)	120hm (Max)	120hm (Max)	120hm (Max)
Package / Case	16-SOIC (0.154", 3.90mm Width)	16-SOIC (0.154", 3.90mm Width)	16-SOIC (0.154", 3.90mm Width)	16-SSOP (0.154", 3.90mm Width)
On-State Resistance (Max)	1000hm	1000hm	1000hm	1000hm
-3db Bandwidth	-	-	-	-
Crosstalk	-90dB @ 100kHz	-90dB @ 100kHz	-90dB @ 100kHz	-90dB @ 100kHz
Channel Capacitance (CS(off), CD(off))	2pF, 2pF	2pF, 2pF	2pF, 2pF	2pF, 2pF
Voltage - Supply, Single (V+)	2V ~ 16V	2V ~ 16V	2V ~ 16V	2V ~ 16V
Number of Circuits	3	3	2	3
Multiplexer/Demultiplexer Circuit	2:1	2:1	4:1	2:1
Series	-	-	-	-
Current - Leakage (IS(off)) (Max)	100pA	1nA	1nA	1nA
Supplier Device Package	16-SOIC	16-SOIC	16-SOIC	16-QSOP
Switch Circuit	SPDT	SPDT	SP4T	SPDT
Package	Tube	Tube	Tube	Tape & Reel (TR)
Operating Temperature	0°C ~ 70°C (TA)	0°C ~ 70°C (TA)	-40°C ~ 85°C (TA)	0°C ~ 70°C (TA)
Switch Time (Ton, Toff) (Max)	175ns, 150ns	175ns, 150ns	175ns, 150ns	175ns, 150ns
Mounting Type	Surface Mount	Surface Mount	Surface Mount	Surface Mount
Charge Injection	2pC	2pC	2pC	2pC
Voltage - Supply, Dual (V±)	±2.7V ~ 8V	±2.7V ~ 8V	±2.7V ~ 8V	±2.7V ~ 8V

MAX4053ACSE Datasheet PDF

Download MAX4053ACSE pdf datasheets and Analog Devices Inc./Maxim Integrated documentation for MAX4053ACSE - Analog Devices Inc./Maxim Integrated.

Datasheets

[MAX4051\(A\)-53\(A\).pdf](#)

Environmental Information

[Maxim Integrated REACH.pdf](#)

[Maxim Integrated RoHS Cert.pdf](#)

Part Numbering Guide

 Part Numbering System.pdf

Application Notes

 Fan Speed Control Is Cool!.pdf

Customers Also Interested in

Recommended Products



MAX4053CSE

Analog Devices Inc./Maxim Integrated
IC SWITCH SPDT X 3 100OHM 16SOIC



MAX4052ESE

Analog Devices Inc./Maxim Integrated
IC SWITCH SP4T X 2 100OHM 16SOIC



MAX4053CEE+T

Analog Devices Inc./Maxim Integrated
IC SWITCH SPDT X 3 100OHM 16QSOP



MAX4052CPE

Analog Devices Inc./Maxim Integrated
IC SWITCH SP4T X 2 100OHM 16DIP



MAX4053ACEE+T

Analog Devices Inc./Maxim Integrated
IC SWITCH SPDT X 3 100OHM 16QSOP



MAX4053ACEE

Analog Devices Inc./Maxim Integrated
IC SWITCH SPDT X 3 100OHM 16QSOP



MAX4053ACEE+

Analog Devices Inc./Maxim Integrated
IC SWITCH SPDT X 3 100OHM 16QSOP



MAX4053CPE+

Analog Devices Inc./Maxim Integrated
IC SWITCH SPDT X 3 100OHM 16DIP



MAX4053CEE

Analog Devices Inc./Maxim Integrated
IC SWITCH SPDT X 3 100OHM 16QSOP



MAX4053ACE+T

Analog Devices Inc./Maxim Integrated
IC SWITCH SPDT X 3 100OHM 16SOIC



MAX4052ESE+T

Analog Devices Inc./Maxim Integrated
IC SWITCH SP4T X 2 100OHM 16SOIC



MAX4052CSE+

Analog Devices Inc./Maxim Integrated
IC SWITCH SPDT X 3 100OHM 16SOIC



MAX4053EEEE+T

Analog Devices Inc./Maxim Integrated
IC SWITCH SPDT X 3 100OHM 16QSOP



MAX4053AEEE

Analog Devices Inc./Maxim Integrated
IC SWITCH SPDT X 3 100OHM 16QSOP



MAX4053EEEE+

Analog Devices Inc./Maxim Integrated
IC SWITCH SPDT X 3 100OHM 16QSOP



MAX4053AEEE+T

Analog Devices Inc./Maxim Integrated
IC SWITCH SPDT X 3 100OHM 16QSOP



MAX4052EEE

Analog Devices Inc./Maxim Integrated
IC SWITCH SP4T X 2 100OHM 16QSOP



MAX4053CSE+T

Analog Devices Inc./Maxim Integrated
IC SWITCH SPDT X 3 100OHM 16SOIC

Shipment

Delivery Time

In-stock items can be shipped within 24 hours. Some parts will be arranged for delivery within 1-2 days from the date all items arrive at our warehouse. And Allelco ships order once a day at about 17:00, except Sunday. Once the goods are shipped, the estimated delivery time depends on the shipping methods and Delivery destination. The table below shows are the logistic time for some common countries.

Delivery Cost

- > Use your express account for shipment if you have one.
 - > Use our account for the shipment. Refer to the table below for the approximate charges.
- (Different time frame / countries / package size has different price.)

Delivery Method

- > Global Common Shipment by DHL / UPS / FedEx / TNT / EMS / SF we support.
- > Others more shipping ways, please get in touch with your customer manager.

Common Countries Logistic Time Reference

Region	Country	Logistic Time(Day)
America	United States	5
	Brazil	7
Europe	Germany	5
	United Kingdom	4
	Italy	5
Oceania	Australia	6
	New Zealand	7
Asia	India	6
	Japan	7
Middle East	Israel	6

DHL & FedEx Shipment Charges Reference

Shipment charges(KG)	Reference DHL(USD\$)
0.00kg-1.00kg	USD\$60.00
1.00kg-2.00kg	USD\$70.00
2.00kg-3.00kg	USD\$80.00

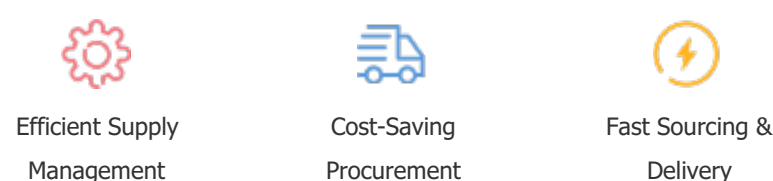
Note: The above table is for reference only. There may have some data bias for the uncontrollable factors. Contact us if you have any questions.

Payment Support

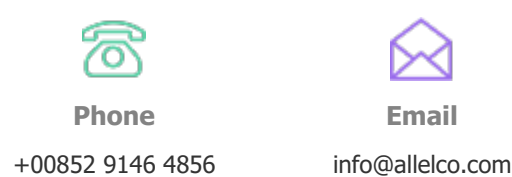
The payment method can be chosen from the methods shown below:
Wire Transfer (T/T, Bank Transfer), Western Union, Credit card, PayPal.



Your Faithful Supply Chain Partner -



Contact us if you have any questions.



Certifications & Memberships



View More

