



Image may be representation.  
See specifications for product details.



## SS1FL3HM3/H

Manufacturer Part Number	<b>SS1FL3HM3/H</b>
Manufacturer	<b>Vishay General Semiconductor – Diodes Division</b>
Allelco Part Number	32D-SS1FL3HM3/H
ECAD Model	PCB Symbol, Footprint & 3D Model
Parts Description	DIODE SCHOTTKY 30V 1A DO219AB
Package	DO-219AB
Data sheet	<b>SS1FL3.pdf</b>
RoHs Status	<b>ROHS3 Compliant</b>

**Get a Quote**

SS1FL3HM3/H - Vishay General Semiconductor - Diodes Division. New Original in Stock. Download Linear Technology SS1FL3HM3/H datasheet/specifications on AllelcoElec.com.  
Request a quote for SS1FL3HM3/H, please send us email: [info@allelco.com](mailto:info@allelco.com)

### Specifications

SS1FL3HM3/H Tech Specifications

SS1FL3HM3/H - Vishay General Semiconductor - Diodes Division technical specifications, attributes, parameters

Product Attribute	Attribute Value	Product Attribute	Attribute Value
Manufacturer	Vishay General Semiconductor – Diodes Division	Package	Tape & Reel (TR)
Voltage - Forward (Vf) (Max) @ If	480 mV @ 1 A	Operating Temperature - Junction	-55°C ~ 150°C
Voltage - DC Reverse (Vr) (Max)	30 V	Mounting Type	Surface Mount
Technology	Schottky	Current - Reverse Leakage @ Vr	200 µA @ 30 V
Supplier Device Package	DO-219AB (SMF)	Current - Average Rectified (Io)	1A
Speed	Fast Recovery =< 500ns, > 200mA (Io)	Capacitance @ Vr, F	130pF @ 4V, 1MHz
Series	Automotive, AEC-Q101, eSMP®	Base Product Number	SS1FL3
Package / Case	DO-219AB		

### Parts with Similar Specifications

The three parts on the right have similar specifications to Vishay General Semiconductor - Diodes Division SS1FL3HM3/H

Product Attribute				
Part Number	SS1FL3HM3/H	<b>SS1FH6-M3/H</b>	<b>SS1H9-E3/61T</b>	<b>SS1FH6HM3/H</b>
Manufacturer	Vishay General Semiconductor - Diodes Division	Vishay General Semiconductor - Diodes Division	Vishay General Semiconductor - Diodes Division	Vishay General Semiconductor - Diodes Division
Capacitance @ Vr, F	130pF @ 4V, 1MHz	90pF @ 4V, 1MHz	-	90pF @ 4V, 1MHz
Voltage - DC Reverse (Vr) (Max)	30 V	60 V	90 V	60 V
Supplier Device Package	DO-219AB (SMF)	DO-219AB (SMF)	DO-214AC (SMA)	DO-219AB (SMF)
Mounting Type	Surface Mount	Surface Mount	Surface Mount	Surface Mount
Base Product Number	SS1FL3	SS1FH6	SS1H9	SS1FH6
Current - Average Rectified (Io)	1A	1A	1A	1A
Package	Tape & Reel (TR)	Tape & Reel (TR)	Tape & Reel (TR)	Tape & Reel (TR)
Technology	Schottky	Schottky	Schottky	Schottky
Package / Case	DO-219AB	DO-219AB	DO-214AC, SMA	DO-219AB
Series	Automotive, AEC-Q101, eSMP®	eSMP®	-	Automotive, AEC-Q101
Operating Temperature - Junction	-55°C ~ 150°C	-55°C ~ 175°C	175°C (Max)	-55°C ~ 175°C
Voltage - Forward (Vf) (Max) @ If	480 mV @ 1 A	700 mV @ 1 A	770 mV @ 1 A	700 mV @ 1 A
Current - Reverse Leakage @ Vr	200 µA @ 30 V	3 µA @ 60 V	1 µA @ 90 V	3 µA @ 60 V
Speed	Fast Recovery =< 500ns, > 200mA (Io)	Fast Recovery =< 500ns, > 200mA (Io)	Fast Recovery =< 500ns, > 200mA (Io)	Fast Recovery =< 500ns, > 200mA (Io)

### SS1FL3HM3/H Datasheet PDF

Download SS1FL3HM3/H pdf datasheets and Vishay General Semiconductor - Diodes Division documentation for SS1FL3HM3/H - Vishay General Semiconductor - Diodes Division.

#### Datasheets

[SS1FL3.pdf](#)

#### PCN Assembly/Origin

[Mult Dev Plating House Add 15/Jan/2021.pdf](#)

### Customers Also Interested in

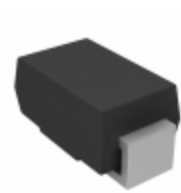
#### Recommended Products

<b>SS1FH6-M3/H</b>	<b>SS18-0B0P-00</b>	<b>SS18-E3/61T</b>	<b>SS1H10-E3/61</b>	<b>SS1H9-E3/61T</b>	<b>SS1H10</b>
Vishay General Semiconductor - Diodes Division DIODE SCHOTTKY 60V 1A DO219AB	Avago Technologies (Broadcom)	Electro-Films (EFI) / Vishay	Electro-Films (EFI) / Vishay	Vishay General Semiconductor - Diodes Division DIODE SCHOTTKY 90V 1A DO214AC	Electro-Films (EFI) / Vishay



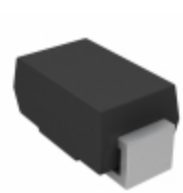
### SS1FH6HM3/H

Vishay General Semiconductor - Diodes Division  
DIODE SCHOTTKY 60V 1A DO219AB



### SS1H10HE3\_B/H

Vishay General Semiconductor - Diodes Division  
DIODE SCHOTTKY 100V 1A DO214AC



### SS1H10HE3\_A/H

Vishay General Semiconductor - Diodes Division  
DIODE SCHOTTKY 100V 1A DO214AC



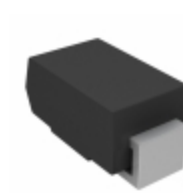
### SS1H10-E3

Electro-Films (EFI) / Vishay



### SS19FA

onsemi  
DIODE SCHOTTKY 90V 1A SOD123FA



### SS1H10HE3\_B/I

Vishay General Semiconductor - Diodes Division  
DIODE SCHOTTKY 100V 1A DO214AC



### SS1FH10HM3/H

Vishay General Semiconductor - Diodes Division  
DIODE SCHOTTKY 100V 1A DO219AB



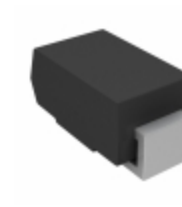
### SS1A05

SHN



### SS18-LTP

Micro Commercial Co  
DIODE SCHOTTKY 80V 1A DO214AC



### SS1H10-E3/61T

Vishay General Semiconductor - Diodes Division  
DIODE SCHOTTKY 100V 1A DO214AC



### SS1881KUA

SEC



### SS1F4HM3/H

Vishay General Semiconductor - Diodes Division  
DIODE SCHOTTKY 40V 1A DO219AB

## Shipment

### Delivery Time

In-stock items can be shipped within 24 hours. Some parts will be arranged for delivery within 1-2 days from the date all items arrive at our warehouse. And Allelco ships order once a day at about 17:00, except Sunday. Once the goods are shipped, the estimated delivery time depends on the shipping methods and Delivery destination. The table below shows are the logistic time for some common countries.

### Delivery Cost

> Use your express account for shipment if you have one.

> Use our account for the shipment. Refer to the table below for the approximate charges.

(Different time frame / countries / package size has different price.)

### Delivery Method

> Global Common Shipment by DHL / UPS / FedEx / TNT / EMS / SF we support.

> Others more shipping ways, please get in touch with your customer manager.

#### Common Countries Logistic Time Reference

Region	Country	Logistic Time(Day)
America	United States	5
	Brazil	7
Europe	Germany	5
	United Kingdom	4
	Italy	5
Oceania	Australia	6
	New Zealand	7
Asia	India	6
	Japan	7
Middle East	Israel	6

#### DHL & FedEx Shipment Charges Reference

Shipment charges(KG)	Reference DHL(USD\$)
0.00kg-1.00kg	USD\$60.00
1.00kg-2.00kg	USD\$70.00
2.00kg-3.00kg	USD\$80.00

Note: The above table is for reference only. There may have some data bias for the uncontrollable factors.

Contact us if you have any questions.

## Payment Support

The payment method can be chosen from the methods shown below:

Wire Transfer (T/T, Bank Transfer), Western Union, Credit card, PayPal.



## Your Faithful Supply Chain Partner -



Efficient Supply Management



Cost-Saving Procurement



Fast Sourcing & Delivery

Contact us if you have any questions.



Phone

+00852 9146 4856



Email

info@allelco.com

## Certifications & Memberships



View More



## Contact us

Address: Flat/Rm C 13/F Harvard Commercial Building 105-111 Thomson Road, Wan Chai, Hong Kong

Phone: +00852 9146 4856

Fax: +00852 3010 8510

Email: info@Allelco.com

Copyright © 2012-2023 AllelcoElec.com. All rights reserved.