



Image may be representation.
See specifications for product details.



MAX483CSA+

Manufacturer Part Number	MAX483CSA+
Manufacturer	Maxim Integrated
Allelco Part Number	32D-MAX483CSA+
ECAD Model	Request Free CAD Models
Parts Description	IC TRANSCEIVER HALF 1/1 8SOIC
Package	8-SOIC (0.154", 3.90mm Width)
Data sheet	MAX481/3/5, MAX487-91, MAX1487.pdf
RoHs Status	ROHS3 Compliant

Get a Quote

MAX483CSA+ - Analog Devices Inc./Maxim Integrated.New Original in Stock. Download Linear Technology MAX483CSA+ datasheet/specifications on AllelcoElec.com. Request a quote for MAX483CSA+, please send us email: info@allelco.com

Specifications

MAX483CSA+ Tech Specifications
MAX483CSA+ - Analog Devices Inc./Maxim Integrated technical specifications, attributes, parameters

Product Attribute	Attribute Value	Product Attribute	Attribute Value
Manufacturer	Maxim Integrated	Package	Tube
Voltage - Supply	4.75V ~ 5.25V	Operating Temperature	0°C ~ 70°C
Type	Transceiver	Number of Drivers/Receivers	1/1
Supplier Device Package	8-SOIC	Mounting Type	Surface Mount
Series	-	Duplex	Half
Receiver Hysteresis	70 mV	Data Rate	250kbps
Protocol	RS422, RS485	Base Product Number	MAX483
Package / Case	8-SOIC (0.154", 3.90mm Width)		

Parts with Similar Specifications

The three parts on the right have similar specifications to Analog Devices Inc./Maxim Integrated MAX483CSA+

Product Attribute				
Part Number	MAX483CSA+	MAX483ECPA+	MAX483CPA+	MAX483ECSA+
Manufacturer	Analog Devices Inc./Maxim Integrated	Analog Devices Inc./Maxim Integrated	Analog Devices Inc./Maxim Integrated	Analog Devices Inc./Maxim Integrated
Type	Transceiver	Transceiver	Transceiver	Transceiver
Package / Case	8-SOIC (0.154", 3.90mm Width)	8-DIP (0.300", 7.62mm)	8-DIP (0.300", 7.62mm)	8-SOIC (0.154", 3.90mm Width)
Data Rate	250kbps	250kbps	250kbps	250kbps
Mounting Type	Surface Mount	Through Hole	Through Hole	Surface Mount
Duplex	Half	Half	Half	Half
Number of Drivers/Receivers	1/1	1/1	1/1	1/1
Series	-	-	-	-
Protocol	RS422, RS485	RS422, RS485	RS422, RS485	RS422, RS485
Base Product Number	MAX483	MAX483	MAX483	MAX483
Supplier Device Package	8-SOIC	8-PDIP	8-PDIP	8-SOIC
Operating Temperature	0°C ~ 70°C	0°C ~ 70°C	0°C ~ 70°C	0°C ~ 70°C
Receiver Hysteresis	70 mV	70 mV	70 mV	70 mV
Voltage - Supply	4.75V ~ 5.25V	4.75V ~ 5.25V	4.75V ~ 5.25V	4.75V ~ 5.25V
Package	Tube	Tube	Tube	Tube

MAX483CSA+ Datasheet PDF

Download MAX483CSA+ pdf datasheets and Analog Devices Inc./Maxim Integrated documentation for MAX483CSA+ - Analog Devices Inc./Maxim Integrated.

Datasheets

[MAX481/3/5, MAX487-91, MAX1487.pdf](#)

Environmental Information

[Maxim Integrated REACH.pdf](#)

[Maxim Integrated RoHS Cert.pdf](#)

Part Numbering Guide

[Part Numbering System.pdf](#)

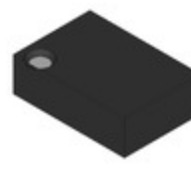
Application Notes

[FAQs about Interface, RS-232, and RS-485 Circuits.pdf](#)

[RS-485 Data Interface Gives Isolated, Full-Duplex .pdf](#)

Customers Also Interested in

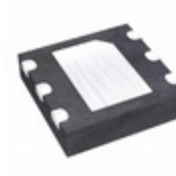
Recommended Products

**MAX483ECPA+**Analog Devices Inc./Maxim Integrated
IC TRANSCEIVER HALF 1/1 8DIP**MAX483CPA+**Analog Devices Inc./Maxim Integrated
IC TRANSCEIVER HALF 1/1 8DIP**MAX483ECSA+**Analog Devices Inc./Maxim Integrated
IC TRANSCEIVER HALF 1/1 8SOIC**MAX4838EXT+T**Analog Devices Inc./Maxim Integrated
IC OVERVOLTAGE PROTECTION SC70-6**MAX483CUA**Analog Devices Inc./Maxim Integrated
IC TRANSCEIVER HALF 1/1 8UMAX**MAX483ECSA+T**Analog Devices Inc./Maxim Integrated
IC TRANSCEIVER HALF 1/1 8SOIC**MAX483CUA+T**Analog Devices Inc./Maxim Integrated
IC TRANSCEIVER HALF 1/1 8UMAX**MAX483ECSA**Analog Devices Inc./Maxim Integrated
IC TRANSCEIVER HALF 1/1 8SOIC**MAX483CPA**Analog Devices Inc./Maxim Integrated
IC TRANSCEIVER HALF 1/1 8DIP**MAX4838EXT**Analog Devices Inc./Maxim Integrated
OVERVOLTAGE-PROTECTION IC**MAX483C**

Analog Devices / Maxim Integrated

**MAX483ECPA**Analog Devices Inc./Maxim Integrated
IC TRANSCEIVER HALF 1/1 8DIP**MAX483CSA**

Analog Devices / Maxim Integrated

**MAX483CUA+**Analog Devices Inc./Maxim Integrated
IC TRANSCEIVER HALF 1/1 8UMAX**MAX4838EXT-T**Analog Devices Inc./Maxim Integrated
OVERVOLTAGE-PROTECTION IC**MAX483CSA+T**Analog Devices Inc./Maxim Integrated
IC TRANSCEIVER HALF 1/1 8SOIC**MAX4837ETT33BD3+T**Analog Devices Inc./Maxim Integrated
IC REG LINEAR 3.3V 500MA 6TDFN**MAX4838EXT+TG104**Analog Devices Inc./Maxim Integrated
IC OVERVOLTAGE PROTECTION SC70-6

Shipment

Delivery Time

In-stock items can be shipped within 24 hours. Some parts will be arranged for delivery within 1-2 days from the date all items arrive at our warehouse. And Alleco ships order once a day at about 17:00, except Sunday. Once the goods are shipped, the estimated delivery time depends on the shipping methods and Delivery destination. The table below shows are the logistic time for some common countries.

Delivery Cost

> Use your express account for shipment if you have one.

> Use our account for the shipment. Refer to the table below for the approximate charges.

(Different time frame / countries / package size has different price.)

Delivery Method

> Global Common Shipment by DHL / UPS / FedEx / TNT / EMS / SF we support.

> Others more shipping ways, please get in touch with your customer manager.

Common Countries Logistic Time Reference		
Region	Country	Logistic Time(Day)
America	United States	5
	Brazil	7
Europe	Germany	5
	United Kingdom	4
	Italy	5
Oceania	Australia	6
	New Zealand	7
Asia	India	6
	Japan	7
Middle East	Israel	6

DHL & FedEx Shipment Charges Reference	
Shipment charges(KG)	Reference DHL(USD\$)
0.00kg-1.00kg	USD\$60.00
1.00kg-2.00kg	USD\$70.00
2.00kg-3.00kg	USD\$80.00

Note: The above table is for reference only. There may have some data bias for the uncontrollable factors.

Contact us if you have any questions.

Payment Support

The payment method can be chosen from the methods shown below:
Wire Transfer (T/T, Bank Transfer), Western Union, Credit card, PayPal.

Your Faithful Supply Chain Partner -



Contact us if you have any questions.



+00852 9146 4856

info@alleco.com

Certifications & Memberships



View More