

Image may be representation.
See specifications for product details.



MAX706TCSA

Manufacturer Part Number	MAX706TCSA
Manufacturer	Maxim Integrated
Allelco Part Number	32D-MAX706TCSA
ECAD Model	Request Free CAD Models
Parts Description	IC SUPERVISOR MPU
Package	8-SOIC (0.154", 3.90mm Width)
Data sheet	MAX706TCSA.pdf

Get a Quote

MAX706TCSA - Analog Devices Inc./Maxim Integrated. New Original in Stock. Download Linear Technology MAX706TCSA datasheet/specifications on AllelcoElec.com. Request a quote for MAX706TCSA, please send us email: info@allelco.com

Specifications

MAX706TCSA Tech Specifications
MAX706TCSA - Analog Devices Inc./Maxim Integrated technical specifications, attributes, parameters

Product Attribute	Attribute Value	Product Attribute	Attribute Value
Manufacturer	Maxim Integrated	Package / Case	8-SOIC (0.154", 3.90mm Width)
Voltage - Threshold	3.08V	Package	Bulk
Type	Power Supply Monitor	Output	Push-Pull, Totem Pole
Supplier Device Package	8-SOIC	Operating Temperature	0°C ~ 70°C (TA)
Series	-	Number of Voltages Monitored	1
Reset Timeout	140ms Minimum	Mounting Type	Surface Mount
Reset	Active Low	Base Product Number	MAX706

Parts with Similar Specifications

The three parts on the right have similar specifications to Analog Devices Inc./Maxim Integrated MAX706TCSA

Product Attribute				
Part Number	MAX706TCSA	MAX706TCUA+T	MAX706SEUA+T	MAX706SESA-T
Manufacturer	Analog Devices Inc./Maxim Integrated	Analog Devices Inc./Maxim Integrated	Analog Devices Inc./Maxim Integrated	Analog Devices Inc./Maxim Integrated
Reset	Active Low	Active Low	Active Low	Active Low
Package	Bulk	Tape & Reel (TR)	Tape & Reel (TR)	Bulk
Output	Push-Pull, Totem Pole	Push-Pull, Totem Pole	Push-Pull, Totem Pole	Push-Pull, Totem Pole
Number of Voltages Monitored	1	1	1	1
Reset Timeout	140ms Minimum	140ms Minimum	140ms Minimum	140ms Minimum
Series	-	-	-	-
Base Product Number	MAX706	MAX706	MAX706	MAX706
Operating Temperature	0°C ~ 70°C (TA)	0°C ~ 70°C (TA)	-40°C ~ 85°C (TA)	-40°C ~ 85°C (TA)
Type	Power Supply Monitor	Simple Reset/Power-On Reset	Simple Reset/Power-On Reset	Power Supply Monitor
Supplier Device Package	8-SOIC	8-uMAX/uSOP	8-uMAX/uSOP	8-SOIC
Package / Case	8-SOIC (0.154", 3.90mm Width)	8-TSSOP, 8-MSOP (0.118", 3.00mm Width)	8-TSSOP, 8-MSOP (0.118", 3.00mm Width)	8-SOIC (0.154", 3.90mm Width)
Mounting Type	Surface Mount	Surface Mount	Surface Mount	Surface Mount
Voltage - Threshold	3.08V	3.08V	2.93V	2.93V

Customers Also Interested in

Recommended Products

MAX706TCUA+T	MAX706SEUA+T	MAX706SESA-T	MAX706SESA+T	MAX706TCUA+	MAX706SCUA-T
Analog Devices Inc./Maxim Integrated	Analog Devices Inc./Maxim Integrated	Analog Devices Inc./Maxim Integrated	Analog Devices Inc./Maxim Integrated	Analog Devices Inc./Maxim Integrated	Analog Devices / Maxim Integrated
IC SUPERVISOR 1 CHANNEL 8UMAX	IC SUPERVISOR 1 CHANNEL 8UMAX	IC SUPERVISOR MPU	IC SUPERVISOR 1 CHANNEL 8SOIC	IC SUPERVISOR 1 CHANNEL 8UMAX	
MAX706TCSA+T	MAX706TCSA-T	MAX706TESA+	MAX706SMJA	MAX706TEPA+	MAX706SESA
Analog Devices Inc./Maxim Integrated	Analog Devices / Maxim Integrated	Analog Devices Inc./Maxim Integrated	Analog Devices Inc./Maxim Integrated	Analog Devices Inc./Maxim Integrated	Analog Devices / Maxim Integrated
IC SUPERVISOR 1 CHANNEL 8SOIC		IC SUPERVISOR 1 CHANNEL 8SOIC	IC SUPERVISOR 1 CHANNEL 8CERDIP	IC SUPERVISOR 1 CHANNEL 8DIP	
MAX706TESA	MAX706SCUA	MAX706SEUA	MAX706SESA+	MAX706TCSA+	MAX706SEPA
Analog Devices Inc./Maxim Integrated	Analog Devices Inc./Maxim Integrated	Analog Devices / Maxim Integrated	Analog Devices Inc./Maxim Integrated	Analog Devices Inc./Maxim Integrated	Analog Devices / Maxim Integrated
IC SUPERVISOR MPU	IC SUPERVISOR MPU		IC SUPERVISOR 1 CHANNEL 8SOIC	IC SUPERVISOR 1 CHANNEL 8SOIC	

Shipment

Delivery Time

In-stock items can be shipped within 24 hours. Some parts will be arranged for delivery within 1-2 days from the date all items arrive at our warehouse. And Allelco ships order once a day at about 17:00, except Sunday. Once the goods are shipped, the estimated delivery time depends on the shipping methods and Delivery destination. The table below shows are the logistic time for some common countries.

Delivery Cost

> Use your express account for shipment if you have one.

> Use our account for the shipment. Refer to the table below for the approximate charges.

(Different time frame / countries / package size has different price.)

Delivery Method

> Global Common Shipment by DHL / UPS / FedEx / TNT / EMS / SF we support.

> Others more shipping ways, please get in touch with your customer manager.

Common Countries Logistic Time Reference		
Region	Country	Logistic Time(Day)
America	United States	5
	Brazil	7
Europe	Germany	5
	United Kingdom	4
	Italy	5
Oceania	Australia	6
	New Zealand	7
Asia	India	6
	Japan	7
Middle East	Israel	6

DHL & FedEx Shipment Charges Reference	
Shipment charges(KG)	Reference DHL(USD\$)
0.00kg-1.00kg	USD\$60.00
1.00kg-2.00kg	USD\$70.00
2.00kg-3.00kg	USD\$80.00

Note: The above table is for reference only. There may have some data bias for the uncontrollable factors.

Contact us if you have any questions.

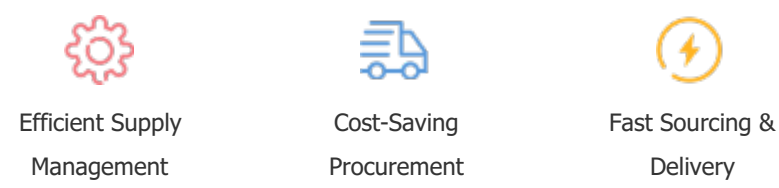
Payment Support

The payment method can be chosen from the methods shown below:

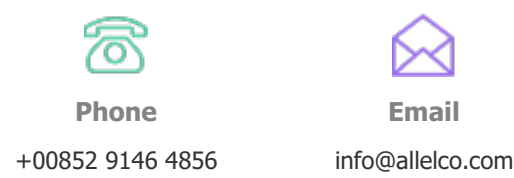
Wire Transfer (T/T, Bank Transfer), Western Union, Credit card, PayPal.



Your Faithful Supply Chain Partner -



Contact us if you have any questions.



Certifications & Memberships



[View More](#)



Contact us

Address: Flat/Rm C 13/F Harvard Commercial Building 105-111 Thomson Road, Wan Chai, Hong Kong

Phone: +00852 9146 4856

Fax: +00852 3010 8510

Email: info@Allelco.com

Copyright © 2012-2023 AllelcoElec.com. All rights reserved.