

Image may be representation.
See specifications for product details.



NSVBAS21AHT1G

Manufacturer Part Number	NSVBAS21AHT1G
Manufacturer	onsemi
Allelco Part Number	32D-NSVBAS21AHT1G
ECAD Model	PCB Symbol, Footprint & 3D Model
Parts Description	DIODE GEN PURP 250V 200MA SOD323
Package	SC-76, SOD-323
Data sheet	BAS21AHT1G.pdf
RoHs Status	ROHS3 Compliant

Get a Quote

NSVBAS21AHT1G - onsemi.New Original in Stock. Download Linear Technology NSVBAS21AHT1G datasheet/specifications on AllelcoElec.com.
Request a quote for NSVBAS21AHT1G, please send us email: info@allelco.com

Specifications

NSVBAS21AHT1G Tech Specifications

NSVBAS21AHT1G - onsemi technical specifications, attributes, parameters

Product Attribute	Attribute Value	Product Attribute	Attribute Value
Manufacturer	onsemi	Package / Case	SC-76, SOD-323
Voltage - Forward (Vf) (Max) @ If	1.25 V @ 200 mA	Package	Tape & Reel (TR)
Voltage - DC Reverse (Vr) (Max)	200 V	Operating Temperature - Junction	-55°C ~ 150°C
Technology	Standard	Mounting Type	Surface Mount
Supplier Device Package	SOD-323	Current - Reverse Leakage @ Vr	40 nA @ 200 V
Speed	Small Signal =< 200mA (Io), Any Speed	Current - Average Rectified (Io)	200mA
Series	Automotive, AEC-Q101	Capacitance @ Vr, F	5pF @ 0V, 1MHz
Reverse Recovery Time (trr)	50 ns	Base Product Number	NSVBAS21

Parts with Similar Specifications

The three parts on the right have similar specifications to onsemi NSVBAS21AHT1G

Product Attribute				
Part Number	NSVBAS21AHT1G	NSVBAT54M3T5G	NSVBAS21HT3G	NSVBAS21HT1G
Manufacturer	onsemi	onsemi	onsemi	onsemi
Current - Reverse Leakage @ Vr	40 nA @ 200 V	2 µA @ 25 V	100 nA @ 200 V	100 nA @ 200 V
Reverse Recovery Time (trr)	50 ns	5 ns	50 ns	50 ns
Capacitance @ Vr, F	5pF @ 0V, 1MHz	10pF @ 1V, 1MHz	5pF @ 0V, 1MHz	5pF @ 0V, 1MHz
Current - Average Rectified (Io)	200mA	200mA	200mA	200mA
Package / Case	SC-76, SOD-323	SOT-723	SC-76, SOD-323	SC-76, SOD-323
Voltage - Forward (Vf) (Max) @ If	1.25 V @ 200 mA	800 mV @ 100 mA	1.25 V @ 200 mA	1.25 V @ 200 mA
Speed	Small Signal =< 200mA (Io), Any Speed	Small Signal =< 200mA (Io), Any Speed	Small Signal =< 200mA (Io), Any Speed	Small Signal =< 200mA (Io), Any Speed
Technology	Standard	Schottky	Standard	Standard
Package	Tape & Reel (TR)	Tape & Reel (TR)	Tape & Reel (TR)	Tape & Reel (TR)
Mounting Type	Surface Mount	Surface Mount	Surface Mount	Surface Mount
Base Product Number	NSVBAS21	NSVBAT54	NSVBAS21	NSVBAS21
Voltage - DC Reverse (Vr) (Max)	200 V	30 V	250 V	250 V
Operating Temperature - Junction	-55°C ~ 150°C	-55°C ~ 125°C	-55°C ~ 150°C	-55°C ~ 150°C
Series	Automotive, AEC-Q101	-	-	-
Supplier Device Package	SOD-323	SOT-723	SOD-323	SOD-323

NSVBAS21AHT1G Datasheet PDF

Download NSVBAS21AHT1G pdf datasheets and onsemi documentation for NSVBAS21AHT1G - onsemi.

Datasheets

[BAS21AHT1G.pdf](#)

Environmental Information

[onsemi REACH.pdf](#)

[onsemi RoHS.pdf](#)

PCN Assembly/Origin

[Mult Dev 25/Mar/2020.pdf](#)

Customers Also Interested in

Recommended Products



NSVBAT54HT1G

Rochester Electronics, LLC
NSVBAT54H - SCHOTTKY BARRIER
DIO



NSVBA114YDXV6T1G

onsemi
TRANS PREBIAS 2PNP 50V SOT563



NSVBAT54M3T5G

onsemi
DIODE SCHOTTKY 30V 200MA
SOT723



NSVBAS21TMR6T2G

onsemi
DIODE SWITCHING 250V SC-74



NSV60601MZ4T1G

onsemi
TRANS NPN 60V 6A SOT223



NSVBAS21HT3G

onsemi
DIODE GEN PURP 250V 200MA
SOD323



NSVBAS21HT1G

onsemi
DIODE GEN PURP 250V 200MA
SOD323



NSVA279

JRC



NSVBAS21SLT1G

onsemi
DIODE GP 250V 225MA SOT23-3



NSVBAT54HT1G

onsemi
DIODE SCHOTTKY 30V 200MA
SOD323



NSVBAS21TMR6T1G

onsemi
DIODE ARRAY GP 250V 200MA SC74



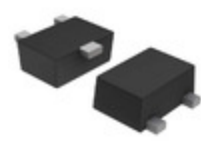
NSVB143ZPDXV6T1G

onsemi
TRANS PREBIAS NPN/PNP 50V
SOT563



NSVBA143ZDXV6T1G

onsemi
TRANS 2PNP BIPO 60V SOT564



NSVBAS21M3T5G

onsemi
DIODE GEN PURP 250V 200MA
SOT723



NSVBAS70LT1G

onsemi
DIODE SCHOTTKY 70V 70MA SOT23-3



NSV9435T1G

onsemi
PNP BIPOlar DIGITAL TRANSISTOR
(



NSV60601MZ4T3G

onsemi
TRANS NPN 60V 6A SOT223



NSVA278

JRC

Shipment

Delivery Time

In-stock items can be shipped within 24 hours. Some parts will be arranged for delivery within 1-2 days from the date all items arrive at our warehouse. And Allelco ships order once a day at about 17:00, except Sunday. Once the goods are shipped, the estimated delivery time depends on the shipping methods and Delivery destination. The table below shows are the logistic time for some common countries.

Delivery Cost

> Use your express account for shipment if you have one.

> Use our account for the shipment. Refer to the table below for the approximate charges.

(Different time frame / countries / package size has different price.)

Delivery Method

> Global Common Shipment by DHL / UPS / FedEx / TNT / EMS / SF we support.

> Others more shipping ways, please get in touch with your customer manager.

Common Countries Logistic Time Reference		
Region	Country	Logistic Time(Day)
America	United States	5
	Brazil	7
Europe	Germany	5
	United Kingdom	4
	Italy	5
Oceania	Australia	6
	New Zealand	7
Asia	India	6
	Japan	7
Middle East	Israel	6

DHL & FedEx Shipment Charges Reference	
Shipment charges(KG)	Reference DHL(USD\$)
0.00kg-1.00kg	USD\$60.00
1.00kg-2.00kg	USD\$70.00
2.00kg-3.00kg	USD\$80.00

Note: The above table is for reference only. There may have some data bias for the uncontrollable factors.

Contact us if you have any questions.

Payment Support

The payment method can be chosen from the methods shown below:
Wire Transfer (T/T, Bank Transfer), Western Union, Credit card,
PayPal.



Your Faithful Supply Chain Partner -



Efficient Supply
Management



Cost-Saving
Procurement



Fast Sourcing &
Delivery

Contact us if you have any questions.



Phone
+00852 9146 4856



Email
info@allelco.com

Certifications & Memberships



View More