



Image may be representation.
See specifications for product details.



SS26HE3_A/I

Manufacturer Part Number	SS26HE3_A/I
Manufacturer	Vishay General Semiconductor – Diodes Division
Allelco Part Number	32D-SS26HE3_A/I
ECAD Model	Request Free CAD Models
Parts Description	DIODE SCHOTTKY 60V 2A DO214AA
Package	DO-214AA, SMB
Data sheet	SS22 thru SS26.pdf
RoHs Status	ROHS3 Compliant

[Get a Quote](#)

SS26HE3_A/I - Vishay General Semiconductor - Diodes Division. New Original in Stock. Download Linear Technology SS26HE3_A/I datasheet/specifications on AllelcoElec.com.
Request a quote for SS26HE3_A/I, please send us email: info@allelco.com

Specifications

SS26HE3_A/I Tech Specifications
SS26HE3_A/I - Vishay General Semiconductor - Diodes Division technical specifications, attributes, parameters

Product Attribute	Attribute Value	Product Attribute	Attribute Value
Manufacturer	Vishay General Semiconductor – Diodes Division	Package	Tape & Reel (TR)
Voltage - Forward (Vf) (Max) @ If	700 mV @ 2 A	Operating Temperature - Junction	-65°C ~ 150°C
Voltage - DC Reverse (Vr) (Max)	60 V	Mounting Type	Surface Mount
Technology	Schottky	Current - Reverse Leakage @ Vr	400 µA @ 60 V
Supplier Device Package	DO-214AA (SMB)	Current - Average Rectified (Io)	2A
Speed	Fast Recovery =< 500ns, > 200mA (Io)	Capacitance @ Vr, F	-
Series	Automotive, AEC-Q101	Base Product Number	SS26
Package / Case	DO-214AA, SMB		

Parts with Similar Specifications

The three parts on the right have similar specifications to Vishay General Semiconductor - Diodes Division SS26HE3_A/I

Product Attribute				
Part Number	SS26HE3_A/I	SS26SHE3_B/H	SS26S-E3/61T	SS26SHE3_A/H
Manufacturer	Vishay General Semiconductor - Diodes Division	Vishay General Semiconductor - Diodes Division	Vishay General Semiconductor - Diodes Division	Vishay General Semiconductor - Diodes Division
Current - Average Rectified (Io)	2A	2A	2A	2A
Mounting Type	Surface Mount	Surface Mount	Surface Mount	Surface Mount
Voltage - Forward (Vf) (Max) @ If	700 mV @ 2 A	750 mV @ 2 A	750 mV @ 2 A	750 mV @ 2 A
Capacitance @ Vr, F	-	-	-	-
Package / Case	DO-214AA, SMB	DO-214AC, SMA	DO-214AC, SMA	DO-214AC, SMA
Supplier Device Package	DO-214AA (SMB)	DO-214AC (SMA)	DO-214AC (SMA)	DO-214AC (SMA)
Voltage - DC Reverse (Vr) (Max)	60 V	60 V	60 V	60 V
Base Product Number	SS26	SS26	SS26	SS26
Operating Temperature - Junction	-65°C ~ 150°C	-55°C ~ 150°C	-55°C ~ 150°C	-55°C ~ 150°C
Package	Tape & Reel (TR)	Tape & Reel (TR)	Tape & Reel (TR)	Tape & Reel (TR)
Speed	Fast Recovery =< 500ns, > 200mA (Io)	Fast Recovery =< 500ns, > 200mA (Io)	Fast Recovery =< 500ns, > 200mA (Io)	Fast Recovery =< 500ns, > 200mA (Io)
Technology	Schottky	Schottky	Schottky	Schottky
Current - Reverse Leakage @ Vr	400 µA @ 60 V	200 µA @ 60 V	200 µA @ 60 V	200 µA @ 60 V
Series	Automotive, AEC-Q101	Automotive, AEC-Q101	-	Automotive, AEC-Q101

SS26HE3_A/I Datasheet PDF

Download SS26HE3_A/I pdf datasheets and Vishay General Semiconductor - Diodes Division documentation for SS26HE3_A/I - Vishay General Semiconductor - Diodes Division.

Datasheets

[SS22 thru SS26.pdf](#)

PCN Assembly/Origin

[Assembly site 28/Jun/2022.pdf](#)

Customers Also Interested in

Recommended Products

SS26SHE3_B/H	SS26E-HF	SS26S-E3/61T	SS26HE3-A/H	SS26L R3	SS26SHE3_A/H
Vishay General Semiconductor - Diodes Division DIODE SCHOTTKY 60V 2A DO214AC	Electro-Films (EFI) / Vishay	Vishay General Semiconductor - Diodes Division DIODE SCHOTTKY 60V 2A DO214AC	Electro-Films (EFI) / Vishay	Taiwan Semiconductor	Vishay General Semiconductor - Diodes Division DIODE SCHOTTKY 60V 2A DO214AC



SS26S-E3

Electro-Films (EFI) / Vishay



SS26HE3_A/H

Vishay General Semiconductor - Diodes Division
DIODE SCHOTTKY 60V 2A DO214AA



SS26SHE3-B/I

Electro-Films (EFI) / Vishay



SS26BG

SHIKUES



SS26HE3/52T

Vishay General Semiconductor - Diodes Division
DIODE SCHOTTKY 60V 2A DO214AA



SS26T3

onsemi
DIODE SCHOTTKY POWER 2A 60V
SMB



SS26HE3

Electro-Films (EFI) / Vishay



SS26FL

onsemi
DIODE SCHOTTKY 60V 2A SOD123F



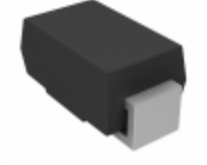
SS26HE3-A/I

Electro-Films (EFI) / Vishay



SS26HE3-A

Electro-Films (EFI) / Vishay



SS26SHE3/61T

Vishay General Semiconductor - Diodes Division
DIODE SCHOTTKY 60V 2A DO214AC

Shipment

Delivery Time

In-stock items can be shipped within 24 hours. Some parts will be arranged for delivery within 1-2 days from the date all items arrive at our warehouse. And Allelco ships order once a day at about 17:00, except Sunday. Once the goods are shipped, the estimated delivery time depends on the shipping methods and Delivery destination. The table below shows are the logistic time for some common countries.

Delivery Cost

> Use your express account for shipment if you have one.

> Use our account for the shipment. Refer to the table below for the approximate charges.

(Different time frame / countries / package size has different price.)

Delivery Method

> Global Common Shipment by DHL / UPS / FedEx / TNT / EMS / SF we support.

> Others more shipping ways, please get in touch with your customer manager.

Common Countries Logistic Time Reference

Region	Country	Logistic Time(Day)
America	United States	5
	Brazil	7
Europe	Germany	5
	United Kingdom	4
	Italy	5
Oceania	Australia	6
	New Zealand	7
Asia	India	6
	Japan	7
Middle East	Israel	6

DHL & FedEx Shipment Charges Reference

Shipment charges(KG)	Reference DHL(USD\$)
0.00kg-1.00kg	USD\$60.00
1.00kg-2.00kg	USD\$70.00
2.00kg-3.00kg	USD\$80.00

Note: The above table is for reference only. There may have some data bias for the uncontrollable factors.

Contact us if you have any questions.

Payment Support

The payment method can be chosen from the methods shown below:

Wire Transfer (T/T, Bank Transfer), Western Union, Credit card, PayPal.



Your Faithful Supply Chain Partner -



Efficient Supply Management



Cost-Saving Procurement



Fast Sourcing & Delivery

Contact us if you have any questions.



Phone

+00852 9146 4856



Email

info@allelco.com

Certifications & Memberships



View More



Contact us

Address: Flat/Rm C 13/F Harvard Commercial Building 105-111 Thomson Road, Wan Chai, Hong Kong

Phone: +00852 9146 4856

Fax: +00852 3010 8510

Email: info@Allelco.com

Copyright © 2012-2023 AllelcoElec.com. All rights reserved.