

Image may be representation.
See specifications for product details.



ADGM1304JCPZ-RL7

Manufacturer Part Number	ADGM1304JCPZ-RL7
Manufacturer	Analog Devices, Inc.
Allelco Part Number	32D-ADGM1304JCPZ-RL7
ECAD Model	Request Free CAD Models
Parts Description	IC RF SWITCH SP4T 14GHZ 24LFCSP
Package	24-VFQFN Exposed Pad
Data sheet	ADGM1004,1304 Overview.pdf ADGM1304 Datasheet.pdf ADGM1304 Datasheet.pdf
RoHs Status	ROHS3 Compliant

[Get a Quote](#)

ADGM1304JCPZ-RL7 - Analog Devices Inc..New Original in Stock. Download Linear Technology ADGM1304JCPZ-RL7 datasheet/specifications on AllelcoElec.com.
Request a quote for ADGM1304JCPZ-RL7, please send us email: info@allelco.com

Specifications

ADGM1304JCPZ-RL7 Tech Specifications
ADGM1304JCPZ-RL7 - Analog Devices Inc. technical specifications, attributes, parameters

Product Attribute	Attribute Value	Product Attribute	Attribute Value
Manufacturer	Analog Devices, Inc.	Operating Temperature	0°C ~ 85°C
Voltage - Supply	3.1V ~ 3.3V	Mounting Type	Surface Mount
Topology	-	Isolation	19dB
Test Frequency	6GHz	Insertion Loss	0.4dB
Supplier Device Package	24-LFCSP (5x4)	Impedance	50Ohm
Series	-	IIP3	69dBm
RF Type	General Purpose	Frequency Range	0Hz ~ 14GHz
Package / Case	24-VFQFN Exposed Pad	Features	-
Package	Tape & Reel (TR)	Circuit	SP4T
P1dB	-	Base Product Number	ADGM1304

Parts with Similar Specifications

The three parts on the right have similar specifications to Analog Devices Inc. ADGM1304JCPZ-RL7

Product Attribute				
Part Number	ADGM1304JCPZ-RL7	ADG918BRMZ-REEL7	ADG936BCPZ	ADG918BRM
Manufacturer	Analog Devices Inc.	Analog Devices Inc.	Analog Devices Inc.	Analog Devices Inc.
RF Type	General Purpose	General Purpose	General Purpose	General Purpose
Series	-	-	-	-
Frequency Range	0Hz ~ 14GHz	0Hz ~ 2GHz	0Hz ~ 2GHz	0Hz ~ 2GHz
IIP3	69dBm	36dBm	32dBm	36dBm
Circuit	SP4T	SPDT	2 x SPDT	SPDT
Operating Temperature	0°C ~ 85°C	-40°C ~ 85°C	-40°C ~ 85°C	-40°C ~ 85°C
Test Frequency	6GHz	1GHz	1GHz	1GHz
Isolation	19dB	37dB	36dB	37dB
Impedance	50Ohm	-	50Ohm	-
Insertion Loss	0.4dB	0.8dB	0.9dB	0.8dB
Topology	-	Absorptive	Absorptive	Absorptive
P1dB	-	17dBm	16dBm	17dBm
Supplier Device Package	24-LFCSP (5x4)	8-MSOP	20-LFCSP (4x4)	8-MSOP
Features	-	-	-	-
Package	Tape & Reel (TR)	Tape & Reel (TR)	Tray	Tube
Voltage - Supply	3.1V ~ 3.3V	1.65V ~ 2.75V	1.65V ~ 2.75V	1.65V ~ 2.75V
Mounting Type	Surface Mount	Surface Mount	Surface Mount	Surface Mount
Package / Case	24-VFQFN Exposed Pad	8-TSSOP, 8-MSOP (0.118', 3.00mm Width)	20-WFQFN Exposed Pad, CSP	8-TSSOP, 8-MSOP (0.118', 3.00mm Width)
Base Product Number	ADGM1304	ADG918	ADG936	ADG918

ADGM1304JCPZ-RL7 Datasheet PDF

Download ADGM1304JCPZ-RL7 pdf datasheets and Analog Devices Inc. documentation for ADGM1304JCPZ-RL7 - Analog Devices Inc..

Datasheets

[ADGM1004,1304 Overview.pdf](#)

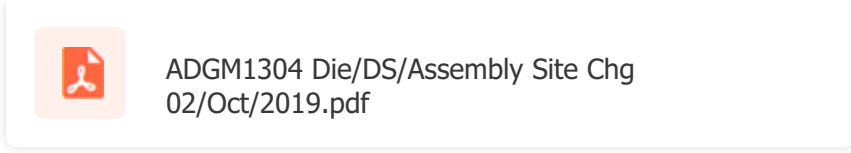
[ADGM1304 Datasheet.pdf](#)

Other Related Documents

[Tape and Reel Packaging.pdf](#)



PCN Design/Specification



Customers Also Interested in

Recommended Products

ADG918BRMZ-REEL7 Analog Devices Inc. IC RF SWITCH SPDT 2GHZ 8MSOP	ADG936BCPZ Analog Devices Inc. IC RF SWITCH SPDT 2GHZ 20LFCSP	ADG918BRM Analog Devices Inc. IC RF SWITCH SPDT 2GHZ 8MSOP	ADG936BRUZ-REEL7 Analog Devices Inc. IC RF SWITCH SPDT 2GHZ 20TSSOP	ADG919BRMZ-REEL7 Analog Devices Inc. IC RF SWITCH SPDT 2GHZ 8MSOP	ADG936BRUZ-R Analog Devices Inc. IC RF SWITCH SPDT 2GHZ 20TSSOP
ADGS5414BCPZ-RL7 Analog Devices Inc. IC SWITCH SPST-NO X 8 24LFCSP	ADG919BRMZ Analog Devices Inc. IC RF SWITCH SPDT 2GHZ 8MSOP	ADG936BCPZ-RL7 Analog Devices Inc. IC RF SWITCH SPDT 2GHZ 20LFCSP	ADG919BRMZ-REEL Analog Devices Inc. 2:1 MUX/SPDT SWITCH	ADG918BCPZ ADI (Analog Devices, Inc.)	ADG918BRMZ Analog Devices Inc. IC RF SWITCH SPDT 2GHZ 8MSOP
ADG918BCP-REEL7 Analog Devices Inc. IC SWITCH SPDT 2:1 MUX 8LFCSP	ADG918BCPZ-REEL7 Analog Devices Inc. IC RF SWITCH SPDT 2GHZ 8LFCSP	ADG904BRUZ-REEL7 Analog Devices Inc. IC SWITCH SP4T X 1 20TSSOP	ADG918BCP ADI (Analog Devices, Inc.)	ADG904BRUZ-R Analog Devices Inc. IC SWITCH SP4T X 1 20TSSOP	ADG918BRMZ-REEL Analog Devices Inc. IC RF SWITCH SPDT 2GHZ 8MSOP

Shipment

Delivery Time

In-stock items can be shipped within 24 hours. Some parts will be arranged for delivery within 1-2 days from the date all items arrive at our warehouse. And Allelco ships order once a day at about 17:00, except Sunday. Once the goods are shipped, the estimated delivery time depends on the shipping methods and Delivery destination. The table below shows are the logistic time for some common countries.

Delivery Cost

- > Use your express account for shipment if you have one.
 - > Use our account for the shipment. Refer to the table below for the approximate charges.
- (Different time frame / countries / package size has different price.)

Delivery Method

- > Global Common Shipment by DHL / UPS / FedEx / TNT / EMS / SF we support.
- > Others more shipping ways, please get in touch with your customer manager.

Common Countries Logistic Time Reference		
Region	Country	Logistic Time(Day)
America	United States	5
	Brazil	7
Europe	Germany	5
	United Kingdom	4
	Italy	5
Oceania	Australia	6
	New Zealand	7
Asia	India	6
	Japan	7
Middle East	Israel	6

DHL & FedEx Shipment Charges Reference	
Shipment charges(KG)	Reference DHL(USD\$)
0.00kg-1.00kg	USD\$60.00
1.00kg-2.00kg	USD\$70.00
2.00kg-3.00kg	USD\$80.00

Note: The above table is for reference only. There may have some data bias for the uncontrollable factors. Contact us if you have any questions.

Payment Support

The payment method can be chosen from the methods shown below:
Wire Transfer (T/T, Bank Transfer), Western Union, Credit card, PayPal.



Your Faithful Supply Chain Partner -

Efficient Supply Management	Cost-Saving Procurement	Fast Sourcing & Delivery
-----------------------------	-------------------------	--------------------------

Contact us if you have any questions.

Phone +00852 9146 4856	Email info@allelco.com
---------------------------	---------------------------

Certifications & Memberships



View More

Contact us

Address: Flat/Rm C 13/F Harvard Commercial Building 105-111 Thomson Road, Wan Chai, Hong Kong
Phone: +00852 9146 4856
Fax: +00852 3010 8510
Email: info@Allelco.com

