



Image may be representation.
See specifications for product details.



VNI2140J

Manufacturer Part Number	VNI2140J
Manufacturer	STMicroelectronics
Allelco Part Number	32D-VNI2140J
ECAD Model	PCB Symbol, Footprint & 3D Mode
Parts Description	IC PWR DRVR N-CHAN 1:1 PWRSSO12
Package	12-PowerLSOP (0.154", 3.90mm Width)
Data sheet	VNI2140J.pdf
RoHs Status	ROHS3 Compliant

Get a Quote

VNI2140J - STMicroelectronics.New Original in Stock. Download Linear Technology VNI2140J datasheet/specifications on AllelcoElec.com.
Request a quote for VNI2140J, please send us email: info@allelco.com

Specifications

VNI2140J Tech Specifications
VNI2140J - STMicroelectronics technical specifications, attributes, parameters

Product Attribute	Attribute Value	Product Attribute	Attribute Value
Manufacturer	STMicroelectronics	Output Configuration	High Side
Voltage - Supply (Vcc/Vdd)	Not Required	Operating Temperature	-40°C ~ 125°C (TJ)
Voltage - Load	9V ~ 45V	Number of Outputs	2
Switch Type	General Purpose	Mounting Type	Surface Mount
Supplier Device Package	PowerSSO-12™	Interface	On/Off
Series	-	Input Type	Non-Inverting
Rds On (Typ)	80mOhm	Features	-
Ratio - Input:Output	1:1	Fault Protection	Current Limiting (Fixed), Open Load Detect, Over Temperature, Over Voltage
Package / Case	12-PowerLSOP (0.154", 3.90mm Width)	Current - Output (Max)	500mA
Package	Tube	Base Product Number	VNI2140
Output Type	N-Channel		

Parts with Similar Specifications

The three parts on the right have similar specifications to STMicroelectronics VNI2140J

Product Attribute				
Part Number	VNI2140J	VNI4140KTR	VNI4140K-32	MIC2075-1BM
Manufacturer	STMicroelectronics	STMicroelectronics	STMicroelectronics	Microchip Technology
Mounting Type	Surface Mount	Surface Mount	Surface Mount	Surface Mount
Operating Temperature	-40°C ~ 125°C (TJ)	-40°C ~ 125°C (TJ)	-40°C ~ 125°C (TJ)	-40°C ~ 85°C (TA)
Output Type	N-Channel	N-Channel	N-Channel	N-Channel
Input Type	Non-Inverting	Non-Inverting	Non-Inverting	Non-Inverting
Number of Outputs	2	4	4	1
Current - Output (Max)	500mA	700mA	1A	500mA
Series	-	VIpower™	VIpower™	MM8™
Switch Type	General Purpose	General Purpose	General Purpose	General Purpose
Features	-	Status Flag	Status Flag	Slew Rate Controlled, Status Flag
Package	Tube	Tape & Reel (TR)	Tube	Bulk
Base Product Number	VNI2140	VNI4140	VNI4140	MIC2075
Ratio - Input:Output	1:1	1:1	1:1	1:1
Package / Case	12-PowerLSOP (0.154", 3.90mm Width)	24-PowerBSOP (0.295", 7.50mm Width)	24-PowerBSOP (0.295", 7.50mm Width)	8-SOIC (0.154", 3.90mm Width)
Output Configuration	High Side	High Side	High Side	High Side
Interface	On/Off	On/Off	On/Off	On/Off
Fault Protection	Current Limiting (Fixed), Open Load Detect, Over Temperature, Over Voltage	Current Limiting (Fixed), Over Temperature	Current Limiting (Fixed), Over Temperature	Current Limiting (Fixed), Over Temperature, UVLO
Voltage - Load	9V ~ 45V	10.5V ~ 36V	10.5V ~ 36V	2.7V ~ 5.5V
Rds On (Typ)	80mOhm	80mOhm (Max)	80mOhm (Max)	90mOhm
Voltage - Supply (Vcc/Vdd)	Not Required	Not Required	Not Required	Not Required
Supplier Device Package	PowerSSO-12™	PowerSSO-24	PowerSSO-24	8-SOIC

VNI2140J Datasheet PDF

Download VNI2140J pdf datasheets and STMicroelectronics documentation for VNI2140J - STMicroelectronics.

PCN Packaging

Material Barrier Bag 17/Dec/2020.pdf

PCN Assembly/Origin

CT6 Line Conversion 21/Oct/2019.pdf

HTML Datasheet

 VNI2140J.pdf

PCN Design/Specification

 VNI2140Jx Die Rev 13/May/2022.pdf

Customers Also Interested in

Recommended Products



VNI4140KTR

STMicroelectronics
IC PWR DRVR N-CHAN 1:1
PWRSSO24



VNI4140K-32

STMicroelectronics
IC PWR DRVR N-CHAN 1:1
PWRSSO24



MIC2075-1BM

Microchip Technology
IC PWR SWITCH N-CHAN 1:1 8SOIC



MIC2549A-2BM-TR

Microchip Technology
IC PWR SWITCH N-CHAN 1:1 8SOIC



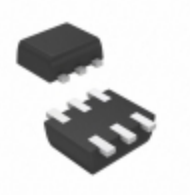
VNI8200XPTR

STMicroelectronics
IC PWR DRVR N-CHAN 1:1
PWRSSO36



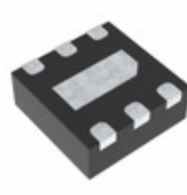
BM2LB150FJ-CE2

Rohm Semiconductor
IC PWR SWITCH P-CHAN 1:1 SOP-J8



MP5075LGT-F-Z

Monolithic Power Systems Inc.
IC PWR SWITCH P-CHAN 1:1
SOT563



AP22652FDZ-7

Diodes Incorporated
LOAD SWITCH,W-DFN2020-6,T&R,3K



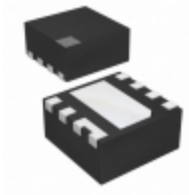
AP2280-1WG-7

Diodes Incorporated
IC PWR SWITCH P-CHAN 1:1 SOT25



AP2146SG-13

Diodes Incorporated
IC PWR SWITCH P-CHANNEL 1:2
8SOP



NCP45521IMNTWG-H

onsemi
IC PWR SWITCH N-CHAN 1:1 8DFN



VNI4140K

STMicroelectronics
IC PWR DRVR N-CHAN 1:1
PWRSSO24



IR3311

Infineon Technologies
IC PWR SWITCH N-CHAN 1:1
TO220AB



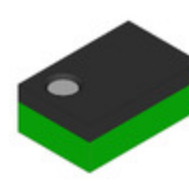
NCP45760IMN24RTWG

onsemi
760 MCM



VNI4140KTR-32

STMicroelectronics
IC PWR DRVR N-CHAN 1:1
PWRSSO24



FPF2195UCX-SN00331

onsemi
POWER SUPPLY SUPPORT CIRCUIT,
AD



ULQ2004ADR

Texas Instruments
IC PWR DRIVER NPN 1:1 16SOIC



VND5012AKTR-E

STMicroelectronics
IC PWR DRVR N-CHAN 1:1
PWRSSO24

Shipment

Delivery Time

In-stock items can be shipped within 24 hours. Some parts will be arranged for delivery within 1-2 days from the date all items arrive at our warehouse. And Allelco ships order once a day at about 17:00, except Sunday. Once the goods are shipped, the estimated delivery time depends on the shipping methods and Delivery destination. The table below shows are the logistic time for some common countries.

Delivery Cost

> Use your express account for shipment if you have one.

> Use our account for the shipment. Refer to the table below for the approximate charges.

(Different time frame / countries / package size has different price.)

Delivery Method

> Global Common Shipment by DHL / UPS / FedEx / TNT / EMS / SF we support.

> Others more shipping ways, please get in touch with your customer manager.

Common Countries Logistic Time Reference

Region	Country	Logistic Time(Day)
America	United States	5
	Brazil	7
Europe	Germany	5
	United Kingdom	4
	Italy	5
Oceania	Australia	6
	New Zealand	7
Asia	India	6
	Japan	7
Middle East	Israel	6

DHL & FedEx Shipment Charges Reference

Shipment charges(KG)	Reference DHL(USD\$)
0.00kg-1.00kg	USD\$60.00
1.00kg-2.00kg	USD\$70.00
2.00kg-3.00kg	USD\$80.00

Note: The above table is for reference only. There may have some data bias for the uncontrollable factors.

Contact us if you have any questions.

Payment Support

The payment method can be chosen from the methods shown below:

Wire Transfer (T/T, Bank Transfer), Western Union, Credit card,
PayPal.



Your Faithful Supply Chain Partner -



Efficient Supply
Management



Cost-Saving
Procurement



Fast Sourcing &
Delivery

Contact us if you have any questions.



Phone

+00852 9146 4856



Email

info@allelco.com

Certifications & Memberships



View More

