

Image may be representation.
See specifications for product details.



AD7893ANZ-10

Manufacturer Part Number	AD7893ANZ-10
Manufacturer	Analog Devices, Inc.
Allelco Part Number	32D-AD7893ANZ-10
ECAD Model	PCB Symbol, Footprint & 3D Model
Parts Description	IC ADC 12BIT SAR 8DIP
Package	8-DIP (0.300", 7.62mm)
Data sheet	AD7893.pdf
RoHs Status	ROHS3 Compliant

Get a Quote

AD7893ANZ-10 - Analog Devices Inc..New Original in Stock. Download Linear Technology AD7893ANZ-10 datasheet/specifications on AllelcoElec.com.
Request a quote for AD7893ANZ-10, please send us email: info@allelco.com

Specifications

AD7893ANZ-10 Tech Specifications

AD7893ANZ-10 - Analog Devices Inc. technical specifications, attributes, parameters

Product Attribute	Attribute Value	Product Attribute	Attribute Value
Manufacturer	Analog Devices, Inc.	Number of Inputs	1
Voltage - Supply, Digital	5V	Number of Bits	12
Voltage - Supply, Analog	5V	Number of A/D Converters	1
Supplier Device Package	8-PDIP	Mounting Type	Through Hole
Series	-	Input Type	Single Ended
Sampling Rate (Per Second)	117k	Features	-
Reference Type	External	Data Interface	SPI
Ratio - S/H:ADC	1:1	Configuration	S/H-ADC
Package / Case	8-DIP (0.300", 7.62mm)	Base Product Number	AD7893
Package	Tube	Architecture	SAR
Operating Temperature	-40°C ~ 85°C		

Parts with Similar Specifications

The three parts on the right have similar specifications to Analog Devices Inc. AD7893ANZ-10

Product Attribute				
Part Number	AD7893ANZ-10	AD7893ARZ-10	AD7893ARZ-10REEL7	AD7892BR-3
Manufacturer	Analog Devices Inc.	Analog Devices Inc.	Analog Devices Inc.	Analog Devices Inc.
Voltage - Supply, Digital	5V	5V	5V	5V
Input Type	Single Ended	Single Ended	Single Ended	Single Ended
Operating Temperature	-40°C ~ 85°C	-40°C ~ 85°C	-40°C ~ 85°C	-40°C ~ 85°C
Data Interface	SPI	SPI	SPI	SPI, Parallel
Mounting Type	Through Hole	Surface Mount	Surface Mount	Surface Mount
Package / Case	8-DIP (0.300", 7.62mm)	8-SOIC (0.154", 3.90mm Width)	8-SOIC (0.154", 3.90mm Width)	24-SOIC (0.295", 7.50mm Width)
Features	-	-	-	-
Voltage - Supply, Analog	5V	5V	5V	5V
Configuration	S/H-ADC	S/H-ADC	S/H-ADC	S/H-ADC
Series	-	-	-	-
Supplier Device Package	8-PDIP	8-SOIC	8-SOIC	24-SOIC
Reference Type	External	External	External	External, Internal
Package	Tube	Tube	Tape & Reel (TR)	Tube
Ratio - S/H:ADC	1:1	1:1	1:1	1:1
Sampling Rate (Per Second)	117k	117k	117k	600k
Architecture	SAR	SAR	SAR	SAR
Number of Bits	12	12	12	12
Number of A/D Converters	1	1	1	1
Base Product Number	AD7893	AD7893	AD7893	AD7892
Number of Inputs	1	1	1	2

AD7893ANZ-10 Datasheet PDF

Download AD7893ANZ-10 pdf datasheets and Analog Devices Inc. documentation for AD7893ANZ-10 - Analog Devices Inc..

Datasheets

AD7893.pdf

Customers Also Interested in

Recommended Products



Shipment

Delivery Time

In-stock items can be shipped within 24 hours. Some parts will be arranged for delivery within 1-2 days from the date all items arrive at our warehouse. And Allelco ships order once a day at about 17:00, except Sunday. Once the goods are shipped, the estimated delivery time depends on the shipping methods and Delivery destination. The table below shows are the logistic time for some common countries.

Delivery Cost

- > Use your express account for shipment if you have one.
 - > Use our account for the shipment. Refer to the table below for the approximate charges.
- (Different time frame / countries / package size has different price.)

Delivery Method

- > Global Common Shipment by DHL / UPS / FedEx / TNT / EMS / SF we support.
- > Others more shipping ways, please get in touch with your customer manager.

Common Countries Logistic Time Reference		
Region	Country	Logistic Time(Day)
America	United States	5
	Brazil	7
Europe	Germany	5
	United Kingdom	4
	Italy	5
Oceania	Australia	6
	New Zealand	7
Asia	India	6
	Japan	7
Middle East	Israel	6

DHL & FedEx Shipment Charges Reference	
Shipment charges(KG)	Reference DHL(USD\$)
0.00kg-1.00kg	USD\$60.00
1.00kg-2.00kg	USD\$70.00
2.00kg-3.00kg	USD\$80.00

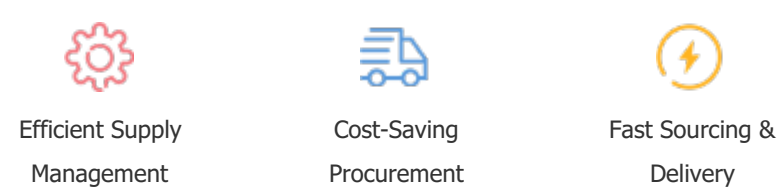
Note: The above table is for reference only. There may have some data bias for the uncontrollable factors.
Contact us if you have any questions.

Payment Support

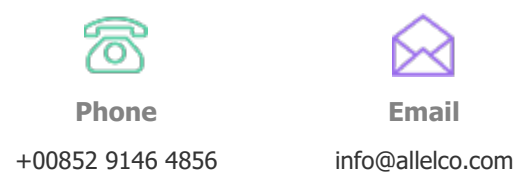
The payment method can be chosen from the methods shown below:
Wire Transfer (T/T, Bank Transfer), Western Union, Credit card, PayPal.



Your Faithful Supply Chain Partner -



Contact us if you have any questions.



Certifications & Memberships



[View More](#)