



Image may be representation.
See specifications for product details.



TC4423COE713

Manufacturer Part Number	TC4423COE713
Manufacturer	Microchip Technology
Allelco Part Number	32D-TC4423COE713
ECAD Model	Request Free CAD Models
Parts Description	IC GATE DRVR LOW-SIDE 16SOIC
Package	16-SOIC (0.295", 7.50mm Width)
Data sheet	TC442(3, 4, 5).pdf
RoHs Status	ROHS3 Compliant

Get a Quote

TC4423COE713 - Microchip Technology. New Original in Stock. Download Linear Technology TC4423COE713 datasheet/specifications on AllelcoElec.com. Request a quote for TC4423COE713, please send us email: info@allelco.com

Specifications

TC4423COE713 Tech Specifications
TC4423COE713 - Microchip Technology technical specifications, attributes, parameters

Product Attribute	Attribute Value	Product Attribute	Attribute Value
Manufacturer	Microchip Technology	Mounting Type	Surface Mount
Voltage - Supply	4.5V ~ 18V	Logic Voltage - VIL, VIH	0.8V, 2.4V
Supplier Device Package	16-SOIC	Input Type	Inverting
Series	-	Gate Type	N-Channel, P-Channel MOSFET
Rise / Fall Time (Typ)	23ns, 25ns	Driven Configuration	Low-Side
Package / Case	16-SOIC (0.295", 7.50mm Width)	Current - Peak Output (Source, Sink)	3A, 3A
Package	Tape & Reel (TR)	Channel Type	Independent
Operating Temperature	0°C ~ 150°C (TJ)	Base Product Number	TC4423
Number of Drivers	2		

Parts with Similar Specifications

The three parts on the right have similar specifications to Microchip Technology TC4423COE713

Product Attribute				
Part Number	TC4423COE713	TC4424COE	TC4423AVMF713	TC4422VAT
Manufacturer	Microchip Technology	Microchip Technology	Microchip Technology	Microchip Technology
Logic Voltage - VIL, VIH	0.8V, 2.4V	0.8V, 2.4V	0.8V, 2.4V	0.8V, 2.4V
Mounting Type	Surface Mount	Surface Mount	Surface Mount	Through Hole
Driven Configuration	Low-Side	Low-Side	Low-Side	Low-Side
Operating Temperature	0°C ~ 150°C (TJ)	0°C ~ 150°C (TJ)	-40°C ~ 150°C (TJ)	-40°C ~ 150°C (TJ)
Series	-	-	-	-
Package	Tape & Reel (TR)	Tube	Tape & Reel (TR)	Tube
Number of Drivers	2	2	2	1
Supplier Device Package	16-SOIC	16-SOIC	8-DFN-S (6x5)	TO-220-5
Package / Case	16-SOIC (0.295", 7.50mm Width)	16-SOIC (0.295", 7.50mm Width)	8-VDFN Exposed Pad	TO-220-5
Channel Type	Independent	Independent	Independent	Single
Input Type	Inverting	Non-Inverting	Inverting	Non-Inverting
Gate Type	N-Channel, P-Channel MOSFET	N-Channel, P-Channel MOSFET	N-Channel, P-Channel MOSFET	IGBT, N-Channel, P-Channel MOSFET
Rise / Fall Time (Typ)	23ns, 25ns	23ns, 25ns	12ns, 12ns	60ns, 60ns
Base Product Number	TC4423	TC4424	TC4423	TC4422
Voltage - Supply	4.5V ~ 18V	4.5V ~ 18V	4.5V ~ 18V	4.5V ~ 18V
Current - Peak Output (Source, Sink)	3A, 3A	3A, 3A	4.5A, 4.5A	9A, 9A

TC4423COE713 Datasheet PDF

Download TC4423COE713 pdf datasheets and Microchip Technology documentation for TC4423COE713 - Microchip Technology.

Datasheets

[TC442\(3, 4, 5\).pdf](#)

PCN Packaging

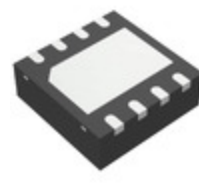
[Label and Packing Changes 23/Sep/2015.pdf](#)

[Packing Changes 10/Oct/2016.pdf](#)

Customers Also Interested in

Recommended Products



TC4424COEMicrochip Technology
IC GATE DRVR LOW-SIDE 16SOIC**TC4424AVPA**Microchip Technology
IC GATE DRVR LOW-SIDE 8DIP**TC4423AVMF713**Microchip Technology
IC GATE DRVR LOW-SIDE 8DFN**TC4422EPA**Microchip Technology
IC GATE DRVR LOW-SIDE 8DIP**TC4422VAT**Microchip Technology
IC GATE DRVR LOW-SIDE TO220-5**TC4424AVMF**Microchip Technology
IC GATE DRVR LOW-SIDE 8DFN**TC4423AVOA713**Microchip Technology
IC GATE DRVR LOW-SIDE 8SOIC**TC4423EPA**Microchip Technology
IC GATE DRVR LOW-SIDE 8DIP**TC4423CPA**Microchip Technology
IC GATE DRVR LOW-SIDE 8DIP**TC4423AVPA**Microchip Technology
IC GATE DRVR LOW-SIDE 8DIP**TC4422VPA**Microchip Technology
IC GATE DRVR LOW-SIDE 8DIP**TC4423AVOE713**Microchip Technology
IC GATE DRVR LOW-SIDE 16SOIC**TC4423AVOA**Microchip Technology
IC GATE DRVR LOW-SIDE 8SOIC**TC4422ESM**Microchip Technology
IC GATE DRVR LOW-SIDE 8SOIC**TC4424AVOA713**Microchip Technology
IC GATE DRVR LOW-SIDE 8SOIC**TC4424AVOA**Microchip Technology
IC GATE DRVR LOW-SIDE 8SOIC**TC4424COE713**Microchip Technology
IC GATE DRVR LOW-SIDE 16SOIC**TC4423VPA**Microchip Technology
IC GATE DRVR LOW-SIDE 8DIP

Shipment

Delivery Time

In-stock items can be shipped within 24 hours. Some parts will be arranged for delivery within 1-2 days from the date all items arrive at our warehouse. And Allelco ships order once a day at about 17:00, except Sunday. Once the goods are shipped, the estimated delivery time depends on the shipping methods and Delivery destination. The table below shows are the logistic time for some common countries.

Delivery Cost

> Use your express account for shipment if you have one.

> Use our account for the shipment. Refer to the table below for the approximate charges.

(Different time frame / countries / package size has different price.)

Delivery Method

> Global Common Shipment by DHL / UPS / FedEx / TNT / EMS / SF we support.

> Others more shipping ways, please get in touch with your customer manager.

Common Countries Logistic Time Reference

Region	Country	Logistic Time(Day)
America	United States	5
	Brazil	7
Europe	Germany	5
	United Kingdom	4
	Italy	5
Oceania	Australia	6
	New Zealand	7
Asia	India	6
	Japan	7
Middle East	Israel	6

DHL & FedEx Shipment Charges Reference

Shipment charges(KG)	Reference DHL(USD\$)
0.00kg-1.00kg	USD\$60.00
1.00kg-2.00kg	USD\$70.00
2.00kg-3.00kg	USD\$80.00

Note: The above table is for reference only. There may have some data bias for the uncontrollable factors.

Contact us if you have any questions.

Payment Support

The payment method can be chosen from the methods shown below:

Wire Transfer (T/T, Bank Transfer), Western Union, Credit card, PayPal.



Your Faithful Supply Chain Partner -



Efficient Supply Management



Cost-Saving Procurement



Fast Sourcing & Delivery

Contact us if you have any questions.



Phone
+00852 9146 4856



Email
info@allelco.com

Certifications & Memberships



[View More](#)

Contact us

Address: Flat/Rm C 13/F Harvard Commercial Building 105-111 Thomson Road, Wan Chai, Hong Kong

Phone: +00852 9146 4856

Fax: +00852 3010 8510

Email: info@Allelco.com